

Sahlin Co. Appoints New Sales Manager

Richard H. Melvin has been appointed sales manager for Sahlin Engineering Co., Inc., Birmingham. It was announced today by Richard T. Sahlin, president. He will be located at the company's main offices here and will be responsible for all sales in the United States and Europe.

Melvin brings to his new position a wide background in engineering, production and sales work. He is a five-year graduate of the General Motors Institute with a BBA in Industrial Relations.

Sahlin Engineering Company, Inc., manufactures the Iron Hand widely used in the automotive and appliance industries.

BUSINESS BRIEFS

Pastel Colors Presented in Permanent Brick

Almost all the colors in the rainbow are now available in a new permanent color fixed brick for the home owner and builder.

This architect's face brick is made by the Malvern Brick and Tile Co. of Malvern, Ark. An exhibition of their Color Card brick in a variety of building displays and garden constructions can be seen at 312 East Brown, Birmingham.

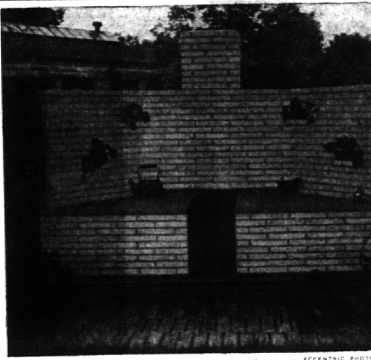
A complete range of sizes, textures and colors are listed to choose from for freedom of action when designing.

SELECTIONS of pastel colors can be had in such colors as sun blue, blue gray, pink, turquoise, French grey and blue white.

At the Birmingham display there is an attractive snow white barbecue pit which would be impossible to maintain in a normal painted brick. Smoke or dirt on the Color Card face brick can be just wiped away.

Among the sizes and shapes are the romans (11 5/8-in. by 1 5/8-in. thick), the normans (11 5/8-in. long by 2 1/2-in. thick) and the standard (8-in. long and 2 1/4-in. thick).

One resident in Franklin Village has bricked his complete home with a white brick of this type.



A LONG snow white barbecue pit in a typical garden setting. The brick demonstrates one of the many manners that the Color Card brick can be used in home and garden construction. The brick is a rock faced type with chip texture.

Thompson Named Branch Manager

O. T. Thompson, 1177 Chesterfield Ave., Birmingham, Mich., has been promoted to branch manager of the Carpenter Steel Company's mill branch warehouse in Detroit.

This is a newly created position for Thompson who has been assistant branch manager in this area for the past two years. He had served prior to that as field representative for Carpenter since January 1948. In his new position, Thompson will continue working out of the local warehouse at 6181 W. Warren Ave.

New Texas Office For Ad Agency

MacManus, John & Adams, Inc. has established a new branch office in Houston, Texas, with Robert J. McCarthy as manager. It was announced today by Ernest Jones, president.

McCarthy, a resident of Houston, has served as a staff writer with the Houston Post; Public Relations director of the University of Houston; an account executive with Wilhelm-Lauchlin-Wilson Advertising Agency of Houston; and an account executive and Radio-TV director, P. Arty Advertising Agency of Houston.

For a full measure of summer pleasure!



A graduate of the University of Chicago, McCarthy is a member of the Houston Press club, Houston Advertising club, Houston Troubadour club, Fox and Hounds club, and a former commissioner of the Rotary club Little League Baseball of Houston.

The new Houston offices are located at 402A, Texas National Bank Building.

PECK'S Cleaning and Pressing Cash and Carry

Plain Dresses—Suits—\$170 Top-ups

108 So. Woodward Ave. for delivery service... PHONE MI 4-7274

YOU'RE ALWAYS WELCOME AT YOUR OLDSMOBILE DEALERS!

SUBURBAN MOTORS CO., INC. 565 S. WOODWARD MI 4-4440 or JO 4-2364

Birmingham Savings Announces Advances

In a recent announcement from W. L. Moreland, president, Birmingham Federal Savings and Loan association, he declared that there had been an excellent growth in both savings and mortgage accounts during the first six months of 1956.

Records show a \$1,427,356 net increase in savings and \$1,214,471 increase in mortgage loans.

Because of the increased business, the association is planning to expand its Birmingham office. Remodeled quarters will be at West Maple and Freese.

Marvin Hahn Agency Locates in B'ham

Marvin Hahn, Inc., Advertising formerly of 2880 W. Grand Boulevard, Detroit, has shifted operations to its new building at 920 East Lincoln road, Birmingham, it was announced recently.

The move was dictated by the agency's need for larger quarters to better handle its accounts, according to Marvin Hahn, president.

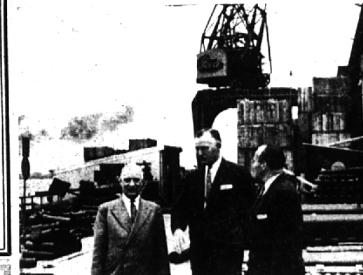
The new building, a single-story L-shaped structure, is completely modern and air conditioned throughout. It has large divisional offices for all agency personnel.

To buy or sell a used automobile, read and use Eccentric Classified Ads.

H. Gardner Named To Bank Council

BUSINESS BRIEFS

Herbert H. Gardner, president of the Birmingham National Bank has been appointed by the Michigan Bankers Association to a three year membership on the Executive Council of the American Bankers Association.



IRVING A. DUFFY, vice president and general manager, Tractor and Implement Division, Ford Motor Company, will return to Birmingham Friday from an extended visit to Ford installations in Europe. He is shown here with B. H. C. Huntelaar (left) and J. W. van der Spek (right), Ford of Amsterdam officials, inspecting a plant addition in the Netherlands. Duffy joined his wife and son, Frank, in Sweden a month ago, after Frank had competed in the Olympic Games at Stockholm as a member of the U. S. Equestrian Team.

STORE HOURS
9:30 - 5 Mon. thru Sat.
11 - 4 Sunday

"Buy at The Mill—and Save"

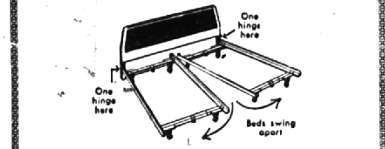
She Never Knew That She Looked So Nice . . . !

This is frequently said of people with new clothes of Clinton quality woolsens. It is a fact—Clinton woolen fabrics look nicer—and make the wearer look her best.

See the fine new Clinton fabrics, as well as the many ready-made products on display here—and look your best!

CLINTON WOOLEN MILL
On U.S. 112 Clinton, Michigan

Create a "magazine picture" bedroom with a—**CONTINENTAL BED**



Custom Made Headboards, Frames

Choose from Wood, Plastic, Cone, Wrought Iron, Brass or covered in your own fabric to match bedspread or draperies.

Complete Line of Bedding
• Stearns & Foster
• Spring Air • Koylon by U.S. Rubber
Special Sizes by Special Order

We Give Holden Red Stamps

R. C. CARPENTER
CUSTOM HOLLYWOOD BEDS

28879 GREENFIELD (Near 12-Mile) LI 4-9133
Open Daily 9:00 to 6:00—Thursday, Friday 9 A.M. to 9 P.M.

NOW IS THE TIME TO PAINT YOUR HOME

- For One Coat Painting
- Streamlined Brushing
- High Gloss Finish
- Wonderful Durability
- Dress Parade Appearance

Just ask for MOORE'S ONE-COAT HOUSE PAINT \$6.85 per gal.

Benjamin Moore paints
BIRMINGHAM PAINT
Glass & Wallpaper Co.

335 E. Maple MI 4-3737

A. L. DAMMAN
Hardware Co.
4066 M. Maple MI 6-0111

SHEER PERFECTION

IN A PORTRAIT BY . . .

bill williams LI 3-4480
1107 Crooks Rd. at Main Royal Oak Photographes

Ranke Tops For Real Estate Men In Michigan

Among Michigan's eight top real estate salesmen selected by the Michigan Real Estate association for an all-salesmen panel discussion at the association's annual convention to be held in Lansing Sept. 11, is Rudolph Ranke, of the Max Brook, Inc., firm in Birmingham. The eight salesmen have been chosen on the basis of their length of service, sales records, leadership and community service.

Insurance Agents Go to Niagara Falls

W. A. Guerber, 325 Argyle, Birmingham, manager of the Northland Agency in Detroit, and special agent M. H. Martin, 6172 Lantern, Bloomfield township, representatives of the Prudential Insurance Co. in Birmingham, arrived at Niagara Falls to attend a three-day regional business conference.

They are among some 190 delegates from seven central states attending the conference. Attendance is based on outstanding sales accomplishment in 1955.

GAfield 2-0005 LUzon 2-6161

POSA ASPHALT PAVING
Residential Driveway Specialists

Broken Concrete Expertly Recapped
PARKING LOTS
Asphalt—Slag—Crushed Stone—Gravel
Job References Gladly Shown
FREE ESTIMATES

30 DAY FREE HOME TRIAL

Even dried egg yolks vanish in this **JAMES** dishwasher

- No Installation!
- No Hand Pre-Rinsing!
- Holds More Dishes!

You saw it in LIFE—now, see the James Dishwasher work in YOUR OWN KITCHEN. Call MI 6-1300 for 30 DAY FREE TRIAL!

Deluxe James, reg. \$289.95 at Milks **\$199.95**

MILKS APPLIANCES
Birmingham's Largest Appliance Store
Serving You For Over 26 Years
1493 S. WOODWARD (near 14 Mile)
Open Even Till 8 • MI 6-1300

THE MOST POTENT CRAB GRASS KILLER ON THE MARKET TODAY

KILLS CRAB GRASS

ORTHO Liquid Crab Grass Killer
(Contains DISODIUM METHYL ARSONATE)

WORKS FAST. As few as two sprays, 7 to 10 days apart, give quick control of crab grass seedlings and immature plants. Contains 20% DISODIUM METHYL ARSONATE, proved in published tests to be far superior to previously known crab grass controls.

WON'T KILL TURF. Won't kill ordinarily used lawn grasses when adequate soil moisture is maintained and other cautions are followed. Proved by professional greenskeepers. Recommended by many garden editors.

EASY TO USE. For general infestation apply with an ORTHO Spray-Etc. attached to your hose. For isolated clumps mix in sprinkling can according to directions. Either way, your job is done in mere minutes.

THEISEN'S GARDEN MART
Open Daily 9-6, Closed Sundays Until Sept.
3826 N. WOODWARD LI 9-4422
(between 13 & 14 Mile)

From where I sit... by Joe Marsh

Confused "Sit"-uation

Been meaning all week to tell you about Curley Lawson's "baby-sitting" experience.

Mrs. M. left him in charge, about seven p.m., with instructions not to let the children come downstairs. So Curley read his paper and whenever he heard footsteps on the staircase he ordered the culprit back to bed. Happened three or four times.

Little while later, Mrs. Miller from next door came over to inquire if Curley had seen her Sonny. "Here I am, Mom" came a voice from upstairs, "But Mr. Lawson won't let me go home."

From where I sit, jumping to conclusions like Curley did, doesn't always make for an amusing story. I'm reminded of the people who—without due consideration—have concluded that I'm wrong to like an occasional glass of beer. Well, to my way of thinking, that's not only intolerant... but, what's more, "minding" the other fellow's business is not the American way.

Joe Marsh

Copyright, 1956, United-States Brewers Foundation

2 COMPLETE CLEANING PLANTS TO SERVE YOU BETTER

Birmingham
DRIVE-IN CLEANERS

Quality Dry Cleaning | Shirts Laundered

4 HOUR SERVICE

WOODWARD AT ADAMS RD. | **WEST MAPLE** AT CRANBROOK

★ WE GIVE S & H GREEN STAMPS ★