

# Chronology For 1955

(Continued from Preceding Page)

True mark of distinction:  
**ENGRAVED**  
Wedding Invitations  
and Announcements.

At-Home Cards and Thank-  
You Notes — and to complete  
the Paper Trousseau: Visiting  
Cards and Social Stationery

For a quarter of a century  
this Shop has been known for  
correct, beautiful, genuine En-  
graving on the finest of papers.

BIRMINGHAM'S SHOP OF STATIONERY, BOOKS AND  
GIFTS ALSO INVITES YOUR INSPECTION  
OF BEAUTIFULLY NEW

## WEDDING GIFTS

in  
Gleaming Silver  
Treasured China  
Graceful Crystal  
Exquisite Linen

*La Belles*

137 WEST MAPLE  
BIRMINGHAM

FOR BEST RESULTS  
USE ECCENTRIC CLASSIFIED ADS



A FAREWELL party by her eighth grade pupils at Barnum junior high was given Miss Gladys Rogers in commemoration of her years of service to the Birmingham public school system.

of Waterford township's assessed valuation as equalized last week during a hearing before the State Tax Commission in Pontiac, changed tax figures for every community in the county.

Birmingham Rotary will host 100 Rotarians representing 42 clubs throughout this area at an all-day institute in the Birmingham Community House.

Hot weather continuing into autumn brought water-needy citizens to the Lathrup council meeting with demands that water sprinkling bans be enforced. Closing of Lathrup school at 11 o'clock last Monday because of the water shortage united the council and citizens seeking relief in solving the water problem.

A capital building fund campaign for \$100,000 was announced this week to parishioners of St. Columban church, 2209 Dunstable, by the Rev. Thomas M. Kenny, pastor. Fr. Kenney indicated the funds will be used to help reduce the debt on present parish properties and once the debt is substantially reduced, construction on a new eight classroom school will be undertaken.

Issue of Sept. 29

City commissioners must accept full responsibility for permitting Eton park skating rink costs to exceed original estimate by almost 50 per cent, Mayor Charles Renfrew declared. Last April voters approved a \$125,000 bond issue for

the skating rink. As estimated by city manager D. C. Egbert costs may run as high as \$175,000.

Birmingham's recreational program will continue on a city basis, although considerably expanded and with the Birmingham school board making a strengthened contribution. Principal improvement will come from employment of a

full-time city recreational director, working directly under the city recreation board but coordinating both city and school summer and winter programs.

About one-fourth of the registered voters in Southfield township turned out to defeat the proposed one-half mill tax increase which was to put the township's roads in shape for the coming winter. Taxpayers said "no" to the plan 696 to 403.

Plans for starting a public li-

brary in Bloomfield Hills are underway and a temporary site for the proposed library has been obtained in Vaughan school.

Birmingham's school district tax levy for 1955-56 will raise more money for school operation although the mill rate will be lower. This results from the district's use of state equalized property evaluations, which averages higher than the county's.

Issue of October 6

When Recreation board member W. Coit Allee asked for a conference about misunderstanding on a matter who would operate new Eton skating rink, Oct. 12 was set by Mayor Charles Renfrew. The recreation board was seeking



TAKING OVER new office quarters at the Chesterfield fire station is Park Smith (left) who officially became Birmingham fire chief upon the Aug. 20 retirement of Vern W. Griffith (right).



PICTURED above is an architect's drawing of the future Birmingham branch of the B. Siegel Co., to be constructed on the southeast corner of W. Maple and Bates streets.

**TORRENCE**  
OIL COMPANY  
Phone  
MI 4-9000  
"We Serve the  
Suburbs"



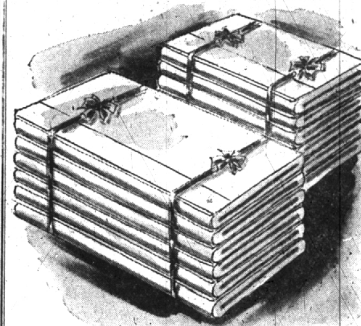
## The New Colonial Barber Shop

OPENING JANUARY 3rd.

964 E. Maple—One Block East of Kroger's

Ample Free Parking for Customers

MAX EGE and ART HOSKING  
BARBERS



## SALE OF Bates SHEETS and PILLOW CASES

Plain White SHEETS

72 by 108 ..... \$2.99

81 by 108 ..... \$3.49

90 by 108 ..... \$3.99

Plain white  
PILLOW CASES 38½ by 40 ..... 90¢ EACH

WHITE AND COLORED SCALLOPS

Bates SHEETS

72 by 108 ..... \$3.49

81 by 108 ..... \$3.99

Matching 38½ by 42  
PILLOW CASES ..... \$1.10 EACH

PLAIN COLORED

Bates SHEETS

72 by 108 ..... \$3.49

81 by 108 ..... \$3.99

Matching 38½ by 42  
PILLOW CASES ..... \$1.00 EACH

## Bates FITTED SHEETS

Twin Bed Size  
TOP or BOTTOM ..... Each Sheet \$2.99

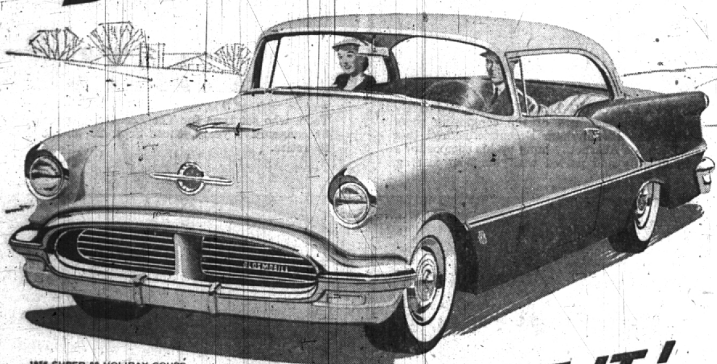
Full Bed Size  
TOP or BOTTOM ..... Each Sheet \$3.45

The

**F. J. Mulholland**  
Company

233 NORTH WOODWARD

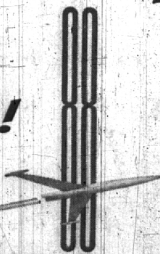
**DRIVE IT!**



1956 SUPER 88 HOLIDAY COUPE

**PRICE IT!**

**OWN IT!**



Once again, Olds sets  
the trend for tomorrow  
with a brand-new, double-duty  
"Intargrille Bumper" design!

Give Oldsmobile a thorough going-over for every detail you demand in your new car. You'll find Olds out ahead in every way! Stunning Starfire styling with the functional beauty of new "Intargrille Bumper" design! Plus the new Rocket T-350 Engine for pace-setting power and performance! New smoothness, too, in the eight-second response of Jetaway Hydramatic. Then, get set for the biggest and best surprise of all! Get our price! See us today... make this your year to rocket away!

\*Standard on Ninety-Eight models.  
Optional on other models on Super 88 models.

**OLDSMOBILE**

VISIT THE "ROCKET ROOM" ... AT YOUR OLDSMOBILE DEALER'S!

**SUBURBAN MOTORS CO., Inc.**—565 S. Woodward  
Phones Midwest 4-4440 and JOrdan 6-2364

OLDSMOBILE PRESENTS "THE CAT AND THE FIDDLE" • ANOTHER GAY 90-MINUTE MUSICAL • SAT., JAN. 21 • NBC-TV

## RENT! A New Portable Typewriter

(all makes available)

**\$5** per month

Birmingham Printing's  
Rental-Ownership Plan!



Up to 3 mos. Rental Applied on Purchase!  
Should you decide to buy—Pay Balance \$5.00 Mo.

Used Standard Machines Also Available

Free Delivery — Free Typing Instruction Book —  
Carrying Case Included

**Birmingham Printing and OFFICE EQUIPMENT Co.**  
369 EAST MAPLE AVENUE Midwest 4-1740

David J. Underdown's

## DOUGLAS CLEANING COMPANY

534 S. Woodward

MI 4-1507

## CASH & CARRY

In By 10:00

Out By 5:00

OPEN 7 A.M. to 6:30 P.M.