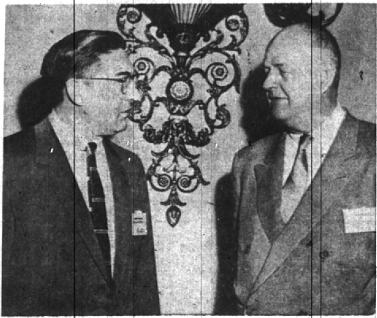


Executives
and Wives
See
'Dream
Cars'
at
Motorama



GENERAL MOTORS Motorama of 1956, a spectacular display of industrial achievement of today combined with imagination-stirring hints of the possible shape of the future, opened last week at the Waldorf Astoria hotel, New York. Looking over the displays are (from left) Roger M. Kyes of Cranbrook road, Bloomfield Hills, with Dorothea McFarland, Actress, H. D. Dawson, general manager of Delco, Miss English of the Motorama show, and L. C. Goad of Lofe Pine road, Bloomfield Hills, executive vice-president of GM.

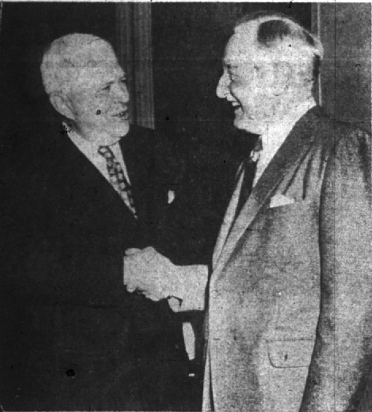
AMONG THE EXECUTIVES and wives at the General Motors extravaganza were Mr. and Mrs. R. W. Moore of Puritan road, Birmingham. Mr. Moore is director of field public relations. Attending the premier, which is of course attended by the top GM brass and their wives, gay parties and shopping sprees and generous amounts of theater goings were worked in their schedule. This year's Motorama attractions included the Firebird II, GM's new family-type gas turbine car.



CAPTAINS OF INDUSTRY and finance mingled with celebrities of the entertainment world at Wednesday's preview, a traditional New York Society event. With his wife was Henry Brian, 3700 West Lincoln, Bloomfield township, industrial relations director of Buick-Oldsmobile-Pontiac.

SEMON KNUDSEN, 31500 Bingham road, Southfield township, general manager of Diesel division, and C. R. Osborne of Martel drive, Bloomfield Hills, vice-president of General Motors, amidst striking settings in the Waldorf's grand ballroom.

FRANK V. BRIDGE of Bloomfield Hills, newly appointed general sales manager of the Pontiac Motor division (left) is shown with Mrs. Bridge and R. M. Critchfield, vice-president of General Motors and general manager of the Pontiac Motor division and Mrs. Critchfield at a special preview.



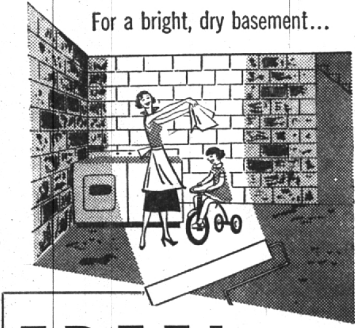
HARLOW H. CURTICE, president of General Motors, greets secretary of defense Charles E. Wilson at a luncheon of 500 business leaders. Mr. Curtice in a speech announced that GM would back its confidence in continued national prosperity.

NOW OPEN . . .

**OUR NEW
CONVENIENT
CLEANING
PLANT**

All cleaning done on the premises
to insure fast service!

Birmingham
DRIVE-IN CLEANERS
CRANBROOK at MAPLE
WE GIVE S & H GREEN STAMPS



For a bright, dry basement...

FREE!

**ONE QUART OF
CINDRSEAL**

Nothing to buy! One free quart given to the first 300 homeowners claiming it Friday, Jan. 27th or Saturday, Jan. 28th at . . .

GREEN'S
240 S. Woodward

**CINDRSEAL
OIL BASE MASONRY PAINT**

It's Ready To Use . . . No Messy Mixing

- No Extra Surface Preparation
Does away with "wetting" of surfaces before, during or after application.
- Primes, Seals, Covers
all in one coat.
- Apply
over previously painted damp or dry surface, or whitewash.

Seals and covers cement and cinderblock, concrete, brick and stone with a moisture-resistant, washable finish, in beautiful colors inside or out. Roll it on. Brush it on. Easy to apply. 1 gallon covers 175 to 275 sq. ft.

- 13 COLORS —
- White
 - Pale Green
 - Buff
 - Jonquil
 - Coral
 - Brick Red
 - Stone Gray
 - Slate Gray
 - Horizon Blue
 - Willow
 - Mocha
 - Bamboo
 - Moss Green

\$5.50
Gallon
Quart Size \$1.50

GREEN'S
240 S. Woodward
Phone MI 4-9034

DUTCH BOY PAINTS	GOLD BOND PAINT PRODUCTS Distributor	HANNA PAINTS In Birmingham 35 Years	COLOR CAROUSEL By Standard Toth	PRATT & LAMBERT FINISHES	BERRY BROS. PRODUCTS
DRAFTING SUPPLIES	WEBER ARTIST SUPPLIES	SHIVA ARTIST SUPPLIES	GRUMBACHER ARTIST SUPPLIES	WINSOR NEWTON ARTIST SUPPLIES	SUPER KLEEN PAINT BRUSHES