

LATHRUP — St. Bede Guild meetings scheduled for March are St. Catherine Guild, March 13, at the home of Mrs. Robert Newsum on Willshire and St. Cyril Guild at 11 a.m. March 14 at the home of Mrs. Tom O'Neil on Santa Barbara.

St. Joseph Guild will meet March 15 at the home of Mrs. John Walworth on Everett; St. Mary Guild will meet at 11:30 a.m. March 14 at the home of Mrs. M. W. Huber on San Jose and St. Francis Guild will meet March 14 at the home of Mrs. Earl Hoener.

Dear Homeowner:

What sells a HOUSE? Knowledge of "Comparative Sales" . . . Intelligent, well-planned advertising . . . construction costs . . . Financing methods . . . Real Estate trends . . . Experience in handling prospective purchasers.

And last but not least, CONFIDENCE in the REALTOR.

Let me close by thanking you again for giving our company the listing on your home. Your trust and confidence is heart-felt. We won't let you down.

Sincerely,
Cal Chamberlain



Cal Chamberlain

Chamberlain Co.

Member Birmingham Real Estate Board
420 S. Woodward, B'ham MI 6-4500



THE BEAT was really "gone" when this picture was snapped. Five of the fourteen members of Bloomfield Hills high school's dance band here form a combo, with music instructor Bruce Warnock at the piano. From left are Art Plaxton, George Beaver, Doug Jocelyn, Larry Erdmann, Warnock, and John Grafe.

**Student Congress
Reps Elected**

Student Congress representatives for the second semester were recently elected by homerooms at Birmingham high school.

From freshman homerooms are Marilyn Braxton, Tom Brown, Bill Burrows, Lynn Clooman, Denny Conlan, Diane Dawson, Tom Hogan, John Hyde, Bob Lewis, Jim Lewis, Julie Schmidt, Herb Snellings, Sandra Walker and Judy Winchell.

Sophomores chose as their representatives Judy Austin, Gerry Barinoff, Linda Biles, John Bonni, George Bouse, Chris Carlson, Bob Flebic, Tom Fontaine, Barb Hobart, Ron Jackson, Bill Lawson, Brad Mack and Carl Reynolds.

JUNIOR REPRESENTATIVES are Harry Altick, Pat Berry, Bryant Hilliard, Jim Husted, Dave Lindley, Ted Murray, Steve Pew, Mary Lou Fomeroy, Ron Sandberg, Ted Schaefer and Judy von Rosen.

Seniors elected Mary J.A. Allgire, Sharon Gray, Alice Hopew, Noel Kurth, Patti Nyberg, Mike Oldham, Bob Pass, Bill Pofter, Jim Roeder, Dick Street and Gina Walker as their representatives.

Barbara Shinnick, Alex Atwood, Claire DeNador, Denise Guilmet and Stu Laidlaw were recently elected by the house of representatives as honorary members.

Maple & Lusher Rd. in Bloomfield
3 & 4 BEDROOM BRICK RANCH HOMES
Luxurious Appointments

For further information:
CERTIFIED REALTY CO.
KE 3-3100

FOR BEST RESULTS
USE ECCENTRIC CLASSIFIED ADS

3 Bedrooms



NEAR ADAMS SCHOOL

Friendly Older Home has a Fireplace and Gas heat. Ample dining room. Expandable attic has space for a fourth bedroom with storage room to spare. Detached garage. Walking distance to everything.

SHOWN BY APPOINTMENT
\$16,700

WALSH, JAMES & WASEY Co.

431 S. Woodward Ave. Birmingham Midwest 4-6500
Birmingham Detroit phone JO 4-6033

**Music Hits Fast Pace
In New Hills Program**

The Bloomfield Hills high school dance band made with some rhythmic musical entertainment at a recent school dance, thereby proving the success of the school system's new music program.

"The 14-piece dance band is an incentive for the 40 band members," says Bruce B. Warnock, director of the instrumental music curriculum. "Only top instrumentalists make it."

Further evidence of the Bloomfield Hills music program's accomplishments may turn up in the form of unfamiliar sounds from a neighbor's basement, if you live near one of these students.

THAT UNFAMILIAR sound is probably one of the 188 beginners in the growing program, practicing his trombone or clarinet. Free instruction, starting in the fifth grade, is offered on all band instruments.

The children meet two and three times a week by grades. Meeting with a large group with mixed instruments, they thereby gain "band" experience from their first notes.

"The heterogeneous grouping method," explains Warnock, "is the most direct approach to developing a good band member. From the very first lesson, the child learns to subjugate his own desires to those of the group."

THE CHILDREN LEARN from one another's mistakes and have the thrill of making music together," Warnock added.

After the first year, he recommended private lessons in addition to group work.

Warnock comes to Bloomfield Hills from Highland Park, Ill., where he was supervisor of instrumental music in five schools, whose bands were rated outstanding in that area.

Last summer the Bloomfield Hills board of education purchased larger band instruments valued at over \$3000 for students. Smaller instruments are owned by the students themselves. Purchase of band uniforms is planned as soon as the present beginners swell the ranks of the high school band.

BESIDES THOSE pictured, students playing with the high school dance band are Bud Badger, Bob Treadway, Harlan Davis, Doug Ross, Willis Anderson, Gordon Clark, Frank Rocamora, Bruce Geyman and George Conle.

**Music Students
Win Top Rank
In Festival**

Results of the recent Southeastern Michigan Solo and Ensemble festival, in which Birmingham music students participated, were announced this week.

Twelve soloists and seven ensembles from local junior and senior high schools rated first division or "best conceivable performance."

Soloists from Birmingham high school whose performances ranked first division standing were Dick Hubbard, Gary Johnson and Lee Kiefer. The three thereby become eligible to enter the state solo and ensemble festival to be held in Ann Arbor Saturday, March 24.

Also rating first division was Bill Meyer, a freshman who will not be able to enter the state festival, open only to grades 10 and above.

BIRMINGHAM HIGH school ensembles who were ranked in the first division also will enter the state festival.

They include a clarinet trio with Mike Weston, Lee Kiefer, and Jon Rippin; a clarinet quartet with Kay Calhoun, Barbara Dodd, Tamara Badenoch and Ann McElahan; a cornet trio with Gary Johnson, Don Zimmerman and Dick Hubbard; and a saxophone quartet with Carol Hess, Preston Britner, John Kerley and Mike Sommers.

A brass sextet made up of Gary Johnson, Don Zimmerman, Martin Winick, Jim Trussell, Bill Krause and Carlo Orlando also won first division rating.

FROM ADAMS JUNIOR high school, soloists winning first division status were Dave VanCleave, Charles Pierz and Michael Guttenberg.

A cornet trio which included Phil Satterthwaite, Al Bauman and Charles Heavenrich also rated in the first division.

Soloists from Barnum junior high school rating in the first division were Margaret Chamberlain, Edson Stevens, Candy Mack, Marge Stettbacher and Melodie Brown.

Winning first division status also were Barnum's clarinet quartet consisting of Mike Emery, Candy Mack, Dave Samanen, and Sue Parkins.

**Washington Group
Gets 2nd Bulletin**

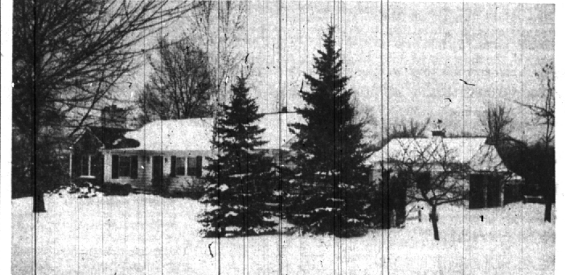
The second number of "Capital Bound" is out for all members of BHS Washington group.

Bulletin tells of the Virginia Peninsula and Williamsburg as it stands now and as it was when it was capital of the United States.

"Capital Bound" was delivered in honorariums at the high school Tuesday morning. In it are articles about the best trip and variety shows which will be put on during the trip.

The bulletin is under the supervision of trip director E. A. Hubbard, and Capital Bound is edited by Don Weir and Sally Mack with writing done by members of the group.

WHISPERING PINES



This peaceful, picturesque beauty spot among the rolling hills can make life really worth living!

Three light and airy twin bedrooms, two full baths and pine paneled library. Massive fireplace in family-size 15 x 24 living room, large separate dining room.

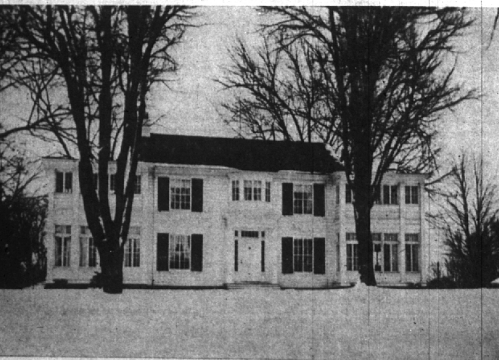
Convenient kitchen with eating space. Large rec. space, 10 x 16 glazed porch. Outside grill for summer fun, att. 2-car garage, acre site.

Spacious, friendly & custom-priced to sell! \$34,750.

HALL & YOUNG

West Maple at Telegraph B'ham: MI 6-2700
Det: JO 6-7900

**DISTINCTIVE AND TRANQUIL
CLOSE TO PUBLIC AND PRIVATE SCHOOLS**



APPROXIMATELY FOUR ACRES OF STREAM AND TREES

- Lovely center hallway
- Two living rooms
- Two cherry sunrooms
- 14.5 x 25 dining room
- Beautifully remodelled kitchen
- Five bedrooms
- Two summer bedrooms
- Four car garage
- Finest condition
- Convenient terms

IT WILL BE OUR PLEASURE TO
SHOW YOU OTHER FINE FEATURES OF
THIS CHARMING HOME

Geo. E.

MARKLEY, INC.

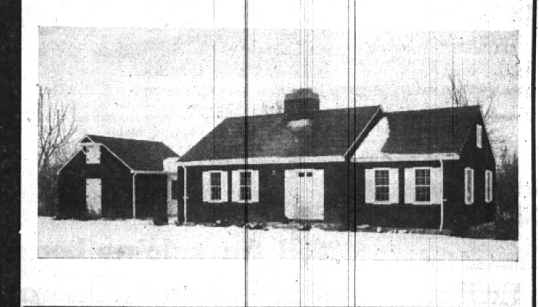
460 West Maple Birmingham MI 4-1222
Birmingham JO 4-5800

**THINGS WE WILL
NOT DO!**

We won't wink at zoning ordinances, restrictions, neighborhood changes, if they are pertinent to your problem. We won't withhold facts—good or bad—that you are entitled to know. We don't take advantage of anyone's misfortune seeking our advice and counsel.

We give owners a true opinion of current market values—generally based upon experience and comparisons. We don't use high pressure. Some brokers put on a big flash, but in the end, sound business always falls to those in whom people have confidence. We have ever-continuing recommendations from banks, attorneys, clients and businessmen.

PERSONALITY PLUS . . .



Refreshingly bright . . . A completely captivating Cape Cod combining Modern comfortable suburban living with the charm and warmth of "New England" atmosphere.

- Cheerful vestibule—unusual indeed!
- Spacious living room—dining "L" combination. Fireplace.
- Delightfully Modern kitchen. Formica counters.
- 3 Lovely large bedrooms. Loads of closets.
- Grade level Games room. Fireplace. Picture window.
- Screened breezeway. 2-Car attached garage.

In a neighborhood of lovely homes . . . an irresistibly gorgeous setting . . . this home will be your "ideal".

Our Integrity
Merits Your Confidence
In Us.

**SNYDER KINNEY
& BENNETT**
Realtors

239 S. Woodward Midwest 4-7000