

New Soviet Tactics To Be Countered By Big Freedom Crusade

As a measure to counteract new Soviet exploitation of captive peoples, particularly in the satellite countries of Eastern Europe, the 1956 Crusade for Freedom will mobilize the greatest effort since its inception, it was emphasized this week by William H. Beatty, 1362 Latham, Birmingham, who is chairman of Michigan's participation in the current Crusade.

In the face of the Kremlin's "obvious treachery," the Crusade's job of supporting Radio Free Europe and Free Europe Press is more vital than ever before, Beatty said.

Radio Free Europe operates a network of 29 powerful transmitters broadcasting anti-Communist programs around the clock to 70,000,000 captive people in Poland, Czechoslovakia, Hungary, Romania and Bulgaria.

FREE EUROPE Press sends miniature newspapers over the Iron Curtain via balloons to supplement broadcasts with the printed word. Both are supported by American contributions to the Crusade.

Radio Free Europe and Free Europe Press strike back at the Kremlin in its most vulnerable spot, Beatty said. This is in the countries of Eastern Europe where there are 70,000,000 people who were free until the Soviets seized them by aggression and subversion a few years ago. The vast majority of these people hate Communism as much as we do.

Reds Turn On Heat in War Of Propaganda

While the free world has shown a tendency to relax since the Geneva conference, the Kremlin is waging the cold war with every resource, according to a survey by Crusade for Freedom.

Reports from all parts of the world indicate the Soviets are still applying the same pressure of propaganda, repression and subversion. Soviet jamming stations are still striving to drown out the broadcasts of Radio Free Europe.

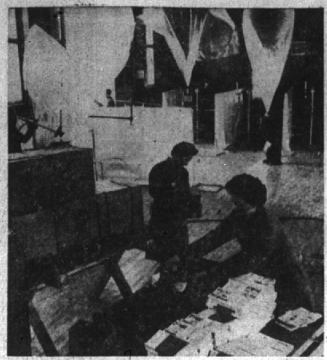
THERE HAS BEEN no lull in Red attempts to suppress the newspapers and news leaflets sent over the Iron Curtain by Free Europe Press. Reports of recent H-bomb blasts in Russia indicate the Soviets are racing to keep ahead of the U. S. in nuclear weapons.

Despite talk of lifting barriers, the Communists are not only maintaining the Iron Curtain but extending it. At the Austro-Hungarian border, the Soviets have streamlined the Iron Curtain by devising a 30-foot-wide entanglement of barbed wire, heavily laced with mines, and virtually impossible to penetrate.

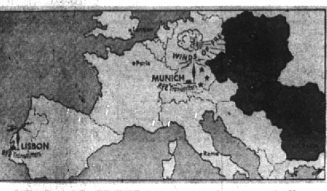
This renewal of the cold war by the communists reflects in part the restlessness of captive populations, political analysts believe. The maneuvers of Soviet diplomacy are designed to cover up the fact that the Reds are having difficulty behind the Iron curtain.

IN HUNGARY, a abortive communist agricultural program caused both a serious grain shortage and widespread discontent in Czechoslovakia, almost 8 years of communist rule has failed to dampen the spirits of people steeped in a democratic tradition. The spirit of opposition also remains strong in Poland.

A large share of the credit for this popular resistance to Communism and must go to Radio Free Europe and Free Europe Press.



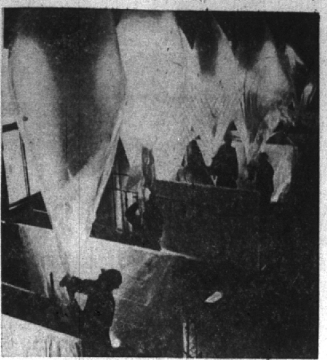
AMERICAN INGENUITY devised this method of getting newspapers over the Iron Curtain—a project of the Free Europe Press which is supported by millions of Americans through contributions to the Crusade for Freedom. This is the "circulation department" of Free Europe Press in free Germany where girls pack miniature newspapers into cartons which will be carried aloft by balloons. New editions are printed every two weeks, complete with news, pictures, features, household hints, editorials and cartoons.



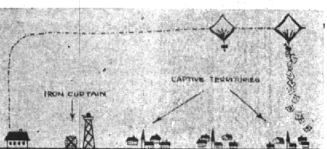
WINDS OF FREEDOM carry the news balloons eastward. In Central Europe, the prevailing winds are easterly, thus making a year-round operation possible. Three launching sites (approximated by stars) afford a selection of targets as wind direction and velocity vary. Through a careful check on atmospheric conditions, technicians are able to estimate approximate "delivery areas" in Poland, Czechoslovakia and Hungary. Their estimates are often verified by escapees, and by suppression decrees of Soviet police.



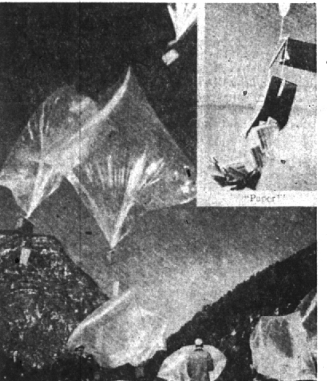
CLEVER GIMMICK holds the filled cartons upright. Delivery cartons (displayed by girl, rear) are suspended off balance on a sort of wire trapeze. The cartons are held upright, however, by an envelope attached to the bottom which is loaded with a quantity of dry ice. When the dry ice evaporates, the cartons upsets and spills its contents. Dry ice is weighed out carefully (by men with gloves) according to the target and weather conditions. Reports say a recent issue showered down on the main public square in Budapest.



EDITION TIME RUSH in the hills near the German border. Balloons are filled with hydrogen at the rate of 100 a minute. They're taken outside and released as soon as they're fitted with their carrier cartons. Papers are printed on "onion skin." They run from eight to 12 pages. Free Europe Press is supervised by American editors, but the content is the work of dedicated exile journalists, nearly all of whom were newspapermen before they fled to the West.



THWARTING THE BARRIERS. Balloons are loaded and inflated so that they go almost straight up to the wind strata most likely to carry them to their targets. They reach an altitude of about 26,000 feet within an hour. Having determined wind velocity and direction, the technicians pin-point their targets with a simple but surprising device. (See next photo, below.)



HOT OFF THE PRESS, a new edition heads over the Bavarian hills and above the Iron Curtain. Since Free Europe Press started operations two years ago, more than 250 million newspapers and other printed matter have been sent into the captive countries. Thus, the Crusade and American contributions help keep alive the traditions, the religion and the spirit of resistance among some 70 million captive peoples. Teamed with the broadcasts of Radio Free Europe, the newspapers have kept the sympathies of millions on our side—our allies in case of emergency.

War Time Activity Boosts House Budget

The Community House had been built, the depression weathered. Mrs. L. N. Baker and Mrs. Clinton Sears followed Mrs. R. W. Chissus and Forbes Hascall as presidents. C. G. Eden, Lorie Pine road, Bloomfield Hills, eighth president, was interviewed this week.

"My time saw a turn of events," said Eden. "There was a wider realization that the House was there—which I had nothing to do with," he added.

In that year the directress, Mrs. Judith Lally, a wonderful person, says Mr. Eden, started the New comers' club. A youth room was improvised in the basement with pingpong tables and phonograph.

Thousands of bandages were made through the 1 and Red Cross, for this was during World War II, and hundreds of people gave blood through the blood bank there.

"WE GOT a really good cook who had been with a country club," Mr. Eden recalled, "and pretty near every social club in town started going over to the House." Charles Eden, son of Indianaapolis, known as 'Pat', has been in the old post office building on Long Lake road.

"I showed Alfred Wilson of Rochester, then chairman of the Detroit Community Fund drive, over the House and was proud to do so. He was electrified at the breadth of our activities and understood our pride in our independence... and our every social club in town started going over to the House."

"I don't think I ever enjoyed anything more," said Mr. Eden, nodding his head in farewell. "It was doing something you couldn't do just by contributing money."

INSURED SAVINGS ACCOUNTS
2 1/2% CURRENT RATE

SAVINGS RECEIVED BY THE 10th OF THE MONTH EARN FROM THE FIRST OF THE MONTH

BIRMINGHAM FEDERAL SAVINGS AND LOAN ASSOCIATION
Woodward at Maple • W. 12-Mile, Berkley

NOTICE OF SPECIAL ELECTION
Township of Southfield
Oakland County, Michigan
February 20, 1956

To the Qualified Electors of the Township of Southfield, Oakland County, Michigan:

NOTICE IS HEREBY GIVEN, that a special election will be held in the Township of Southfield, Oakland County, Michigan on Monday the 20th day of February, 1956 from 7:00 o'clock, A.M. to 8:00 o'clock, P.M., Eastern Standard Time, to vote upon the following proposition:

Shall the purpose of the tax limitation increase of 2/10ths of 1% (\$2 per \$1,000) of the assessed valuation as equalized, which was voted by the electors of the Township of Southfield, Oakland County, Michigan, on the 4th day of April, 1955, a period of twenty (20) years from 1955 to 1974, both inclusive which purpose now reads as follows:

"For the sole purpose of paying the principal and interest on bonded indebtedness of the township incurred after April 1, 1955, for the purpose of constructing or aiding in the construction of a system of trunk sewers within the Township of Southfield, which shall include the township's share of the cost of an interceptor sewer in the Evergreen Interceptor District."

be amended to read as follows:
"For the purpose of providing additional sewer disposal facilities for the township, 12/20ths of which shall be used for the purpose of paying the township's share of the cost of an interceptor sewer in the Evergreen Interceptor District and 8/20ths of such increase within the Township of Southfield, which shall include the township's share of the cost of an interceptor sewer in the Evergreen Interceptor District."

and that otherwise the said tax limitation proposition as voted shall remain in full force and effect?

- NOTICE IS FURTHER GIVEN, that the polling places for said election will be as follows:
- Prec. 1—Brooks School, Eleven Mile and Lahser
 - Prec. 2—John Grace School, 21000 Indian
 - Prec. 3—CHURCH OF THE ASCENSION, LUTHERAN
 - Prec. 4—McKinley School, Ten Mile west of Southfield
 - Prec. 5—Franklin Community Hall
 - Prec. 6—Beare School, Evergreen and Midway
 - Prec. 7—Fire Station, 13 Mile west of Southfield
 - Prec. 8—Southfield High School, Ten Mile and Lahser
 - Prec. 9—Fire Station, Nine Mile and Prosper
 - Prec. 10—Southfield No. 10 School, Berg Road and Ten Mile
 - Prec. 11—East Southfield School, 28501 Pierce
 - Prec. 12—Magnolia School, 17000 Dorset
 - Prec. 13—Our Lady Queen of Martyrs School Hall, Pierce at Dunblain

NOTICE IS FURTHER GIVEN, that the following statement has been received from the County Treasurer as to previously voted increases in the tax rate limitation affecting taxable property in the township:

County Treasurer's Statement as Required by Act 293 of the Public Acts of 1947.

I, Charles A. Sparks, County Treasurer of the County of Oakland, State of Michigan, do hereby certify that according to the records in my office, as of January 16, 1956, the total of all voted increases in the tax rate limitation affecting taxable property in the township is as follows:

Local Unit	Voted Increases	Years Increase Effective
Township of Southfield	2.00	1955 to 1974 incl.
County School District of Oakland County	.50	1954 to 1969 incl.
Township School District of Southfield Township	4.00	1953 to 1971 incl.
School District No. 3	4.50	1953 to 1972 incl.
Fractional Royal Oak and Southfield Townships and City of Oak Park	10.00	1951 to 1970 incl.
School District of the City of Birmingham	6.00	1954 to 1973 incl.
	3.50	1952 to 1956 incl.
	4.50	1953 to 1972 incl.
	4.00	1954 to 1973 incl.

Polling places for said election will be open from 7:00 o'clock A.M. to 8:00 o'clock P.M.

CHARLES A. SPARKS,
Treasurer of Oakland County
FANNIE ADAMS,
Township Clerk

It's Exercise for Mike

A DEMONSTRATION of how to do three things that no one is given when 9-year-old polio convalescent, Michael Wilkinson, 2093 Windemere. Every noon Michael eats lunch, watches television and exercises his weakened leg muscles at the same time. A group of Boy Scouts built the wooden stand which supports Michael on four sides, helping him to

Oakland County was established by Proclamation of Governor Lewis Cass January 12, 1819, the Oakland County Planning Commission reports from local history. It was originally divided into only two townships with a population of 300.

Brightest Promise for America's Future

Boy Scout Week Feb. 6-12

Boy Scout Week Feb. 6-12