

## Gerhard Cites Consumers Power Projects in '56

Consumers Power Company will invest more than \$14,000,000 in its Southeast Division, headquartered at Pontiac, during 1956 to expand and improve its natural gas services throughout Oakland, Macomb and western Wayne counties, according to Division Manager David H. Gerhard.

Gerhard announced that the company will install, in various division areas, some 140 miles of new gas mains to meet the needs of an estimated 23,000 new customers which it expects to add to its service lists during the year.

In addition, an important new

16-inch gas main will be installed from the mains of the Panhandle Eastern Pipe Line Company in the Northville gas fields to the company's Coolidge Highway gas regulator station in Royal Oak, a distance of some 28 miles. This will provide for a new source of supply of gas from Panhandle, and from the Northville fields, to the company, Gerhard said.

Important improvements to many gas regulator stations on the service lines will result in better service and more efficient operation of the system, according to Gerhard. Principal regulator projects

will take place at stations in Macomb, south Oakland and west Wayne counties, he said.

IN SOUTH OAKLAND, the regulator station at the company's Coolidge Highway property will be enlarged to receive additional gas supplies, and in Hazel Park a new station will be built to help meet the growing demands for gas from customers in the Hazel Park-Ferndale area.

Important gas main projects listed by Mr. Gerhard include the installation of new mains to reach new customers, in Waterford town-

## Wilson Appointed Parts Manager

John E. Wilson, 231 Oakland, Birmingham, has been appointed parts manager of the export division, Chrysler corporation.

Wilson, a native of Birmingham, joined the Dodge division of Chrysler in 1939 after he graduated from Michigan State University.

ship, Southfield township, Avon township, Herrington Hills (Pontiac), Orion township, Royal Oak township and West Bloomfield township, all in Oakland County.

## Keller-Koch Move Agency

Keller-Koch Chrysler-Plymouth agency will move its operation, now in three buildings in Birmingham and Royal Oak, to the site of the former Wigley's market at Hunter and Woodward.

Keller-Koch, operated by Richard Keller and Victor Koch, will move into their new location about Feb. 20.

Consolidation of their bump shop, now at 1204 South Woodward, their sales office at 479 South Woodward and their used car operation in Royal Oak is planned.

KELLER and Koch, both 51, have had their firm in Birmingham since 1945 and last November opened a Dodge agency in Chicago. Koch runs the Chicago operation.

Robert Carlson will manage the Birmingham firm in the remodelled building.

## Psychiatric Clinic Opens in Birmingham

The Birmingham Psychiatric Clinic, under the directorship of James Clark Moloney, M.D., has been opened with facilities for diagnosis and treatment of emotional and personality problems of children and adults.

The clinic is located at 212 Daines, Birmingham, Michigan and appointments may be made by calling Midwest 7-9455, Monday thru Friday from 9:00 a.m. to 5:00 p.m. building.

## LEGAL NOTICES

CLARENCE W. BIGNMAN, Atty., 207 Wabek Bldg., Birmingham

STATE OF MICHIGAN. The Probate Court for the County of Oakland.

IN RE: The Estate of AL. J. DEBARK, Deceased.

At a session of said court, held at the said County, on the 18th day of January, A. D. 1956.

Present: Honorable Arthur E. Moore, Judge of Probate.

Order appointing time for hearing Notice is hereby given that it is hereby ordered that the time and place for hearing on claims against the estate of AL. J. DEBARK, deceased, be the 14th day of February, A. D. 1956, at nine o'clock in the forenoon at the City of Pontiac, Michigan, in the Court of Probate, Room 105, at the Hotel Statler, 14th Floor of the Statler.

Signal, a representative of Shiro Watch Co., has headed two previous shows.

## Wilson Drug Wins National Award

Wilson Drug Co. of Birmingham has been awarded second prize of \$100 and a plaque for its window display during Pharmacy Week of Oct. 22, by the American Pharmaceutical Association.

The display based on "An important member of your health team, the Pharmacist" was designed by Richard J. Wilson. It won top honors in state competition and was submitted to the American Pharmaceutical Association for national judging with other state prize-winners.

## Reorganize Snyder Architectural Firm

Robert Snyder, who heads the department of architecture at Cranbrook Academy of Art, has recently reorganized his architectural firm with offices at 129 W. Maple, Birmingham, into Robert Snyder Associates, Architects.

In the new firm set-up, Snyder will be in charge of all planning and designing activities, and his new associate, Lawrence F. Schneider, will be in charge of production.

Schneider has previously worked with Robert Swanson Associates, Wallace Frost, architect, and Paul Moffet. He is a University of Detroit graduate in architecture.

## Irving Segal Heads Jewelry Exhibit

Irving Segal, 4725 Dover road, Bloomfield township, has been named to head the show committee of the Spring Jewelry show, sponsored by the Detroit Jewelry Sales Association, at the Hotel Statler, Feb. 5 through 8.

Segal said he expects about 1500 retailers from Michigan and Ohio to visit the four-day show. Fifty exhibitors representing top nationally advertised jewelry and allied lines will occupy the entire 14th floor of the Statler.

Signal, a representative of Shiro Watch Co., has headed two previous shows.

# HOOVER DAYS!

## \$34.95 OFF

During this Special Sale! Thursday, Friday and Saturday Only!



Light-weight, full size Hoover Lark II Beats, as it Sweeps, as it Cleans. These are brand new 1955 cleaners in their original factory shipping cartons. Former selling price \$104.00—now just \$69.95

Complete with hook while they last

A Factory Demonstrator Will Be In Our Store Friday and Saturday, Feb. 3 & 4!

MI 6-1300

## MILKS APPLIANCE

1493 S. Woodward, Birmingham  
Open Even Till 8:00

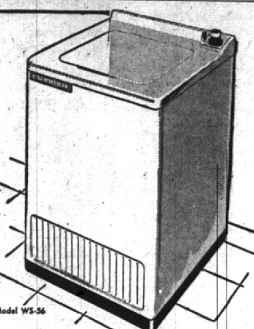
You will find many bargains in The Eccentric Classified Columns.

## BUY THIS AUTOMATIC 1956 FRIGIDAIRE WASHER... Now at lowest price \$2.00 Per Week

Brand New—from packing crate to you! POCKET A WHOPPING \$50 SAVINGS

Features FRIGIDAIRE'S Exclusive Live-Water Action! Here's the great new washing action developed by Frigidaire and General Motors THAT MAKES ALL OTHER ACTIONS OLD-FASHIONED!

Instead of thrashing vines to add wear and tear to clothes, LIVE-WATER Action washes with thousands of swirling, churning water currents, cleaning clothes gently, thoroughly. Whites emerge whiter, colors wash brighter!

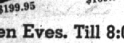


STARTS • WASHES • RINSES SPIN-DRIES • STOPS • All with Single Dial Setting!

## PUT AN END TO "WASHDAY CARES" SMALL DOWN PAYMENT Compare with Dryers Costing Much More!

Count on years of working pleasure from this famous economy-priced FRIGIDAIRE dryer. Automatic full cycle operation dries clothes as you want them, lets them out when door is opened. Can be adjusted for operation on 200V or 115V line.

PORCELAIN PROTECTED—while it's needed most. Drum is rustproofed. GIANT SCREEN DRAWER traps annoying lint.



Open Even, Till 8:00

Select-O-Dial Control—Regulates wash cycle time for different fabrics, different size loads. Helps you save water, too!

Lifetime Porcelain where it counts most—inside and out of tub and water container. Keeps both rust-free.

FOR YOUR BIGGEST SAVINGS... BIGGEST TRADE-IN ALLOWANCES VISIT

# MILKS APPLIANCE

MI 6-1300

1493 S. Woodward, Birmingham Near 14-Mile

# FEBRUARY PRICES

SAVE YOU DOLLARS! Before you buy any furniture ANYWHERE

## SEE OUR PRICE TAGS!

WE GIVE BARGAIN BASEMENT PRICES ON QUALITY PIECES FOR YOUR

- LIVING ROOM
- BED ROOM
- DINING ROOM

CHAIRS - TABLES - LAMPS ON FLOOR SAMPLES YOU CAN SAVE UP TO 1/2

# Har-Tron HI-WAY FURNITURE MART

1532 WOODWARD AVE., BIRMINGHAM, MICH.

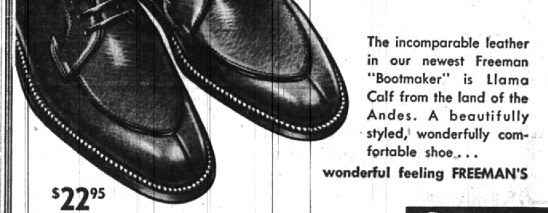
4 BLOCKS N. OF 14 MI. RD. Midwest 4-1410

Open Thursday, Friday and Saturday till 9

Easy To Park — Just Drive Up Convenient Budget Terms

## Luxury from a distant land

# FREEMAN BOOTMAKER



The incomparable leather in our newest Freeman "Bootmaker" is Llama Calf from the land of the Andes. A beautifully styled, wonderfully comfortable shoe... wonderful feeling FREEMAN'S

\$22.95  
Brown Llama Calf "Bootmaker"

Other Freeman's \$20.95 to \$24.95

WABEEK BUILDING BIRMINGHAM MI 6-1168

Higgins and Trunk

## THE MORE MATURE MAN'S VERSION OF THE NATURAL SHOULDER MODEL



the natural **Flaire**

Many men, as they mature, tend to put on a little extra weight. And in consequence, they often have difficulty in finding the proper expression of current fashion. That is why we are so impressed with our new Flaire model.

Tailored by H. Freeman of Philadelphia — who make our Naturalaire® model — this new version of the natural-shoulder suit is particularly flattering to the more mature man. It tends to make him look slimmer, taller, and straighter... yet gives him all the natural comfort of a suit with minimum shoulder padding. Many men will find it the model they have long been seeking!

\$85.00

DESIGNED BY H. FREEMAN & SON PHILADELPHIA

expressly for Wabek Building, Birmingham

Detroit • Chicago • Grosse Pointe

Higgins and Trunk