

### Alpha Chi's Give Parties For Charity

Raising money for the Cerebral Palsy fund is the current national athletic project of Alpha Omega Alpha alumnae chapter of Alpha Chi Omega.

For the purpose, members will give individual benefit telephone bridge and canasta parties in their homes next Tuesday.

According to Mrs. William Haas, chairman, who lives on Highland Blvd., Birmingham, there will be 14 special prizes, in addition to the grand prize and individual party prizes. Parties will be held either at 2 in the afternoon or 8:30 in the evening.

Committee members are Mrs. Reed Dewey, Berkeley; Mrs. Joseph Kinney, Huntingdon Woods; and Mrs. Charles White, Rivetown.

Afternoon parties will be given by Mrs. Doris Ansteth, Kirkshire; Mrs. W. W. Birchard, Stanley Blvd.; Mrs. Haas; Mrs. Florence Miller, Royal Oak; Mrs. James W. Rowland, Fawcett; and Mrs. Robert Walls, Hupp Cross road.

### 91 Places Set For Dance Club

Places set for 91 will mark an E-shaped table in the ballroom of the Birmingham Community House Feb. 3 when the Friday evening dance club under the direction of Mrs. Baal E. Brown hold its annual dinner dance for members of the group.

Valentines and balloons will create a colorful decorative theme for the dance. Entertainment will be provided by four acts recently arranged for a talent show.

Larry Stolberg will act as dance chairman, assisted by Tom Burzum and Skip Schick. Judy Towne is chairman of decorations and Patsy Lucia with Don Schmidt, will announce the program. Arthur Stuart will have charge of the clean up committee.

Next dance will take place Friday, Feb. 10, at 7:30 p.m. at the Community House.

### Club Calendar

**FEBRUARY 2**  
Birmingham Business Women, business meeting and dinner, 6:30 p.m., Community House.

**FEBRUARY 3**  
Junior Group of Goodwill Industries building, 6522 Bruah, Detroit.

**FEBRUARY 6**  
Holy Name Altar Society, monthly meeting, 7 p.m., in St. Anne's hall, Miss Lillian Hogue, chairman. Life underwriter, will speak on "What Women Should Know About Wills", and tea will follow.

**FEBRUARY 7**  
Pythian sisters, No. 94, meeting, 8 p.m. at Community House.

**FEBRUARY 8**  
Christ Child Society, Birmingham Unit, general meeting, home of Mrs. Edmund T. Nolan, 412 Hamilton drive, Bloomfield Hills.

**FEBRUARY 9**  
Franklin Cemetery Auxiliary, will hold a reunion, followed by Valentine party, home of Mrs. Kenneth Green, 984 Pierce, Birmingham.

### Camp Arbutus Girls To Have A Reunion

Camp Arbutus campers will be reuniting in Birmingham next Saturday. Arbutus, one of the oldest private girls' camps in the area, will hold a reunion and party at downtown Central YWCA, Detroit, from 2 to 4:30 p.m., Saturday.

There will be songs, camp chatter, movies of last summer's activities, and, everything but a camper.

Arbutus directors, Mr. and Mrs. Paul Henscher, Glenview road, Southfield village, will be on hand to greet the guests.

Francis Quillian, Bunny Martin, Kathie Heyn and Trina Beneker, all from Birmingham, will be there. Also among the guests from Bloomfield Hills, will be Julie George and Mary Benson.

### Member of Teen Fashion Panel

A group of her friends from the Birmingham Country club attended a showing with Barbara Swenson Saturday at the J. L. Hudson company. Barbara, the daughter of Mr. and Mrs. Arthur G. Swenson of Manassas, Detroit, is one of Hudson's Teen Panels this year.

The "fashionettes" as they are called, present a show every Saturday at the downtown store at 1000.

Following the showing of suits, joining Barbara for luncheon were Susan Reuther, daughter of Mr. and Mrs. William Reuther, 2450 Northlawn drive, Birmingham, Virginia; Patricia, daughter of the Murray Pattens, Diane Fitter, whose parents are the Norman Fitters, and Mrs. and Mrs. Harvey Nelson, and Mrs. Harvey Nelson.

Next week's showing will center around "Teen Wardrobe" on a Shoestring.

### Hosts Open House For Anniversary

Dr. and Mrs. Carl J. Fox attended the 58th wedding anniversary celebration of the latter's parents are Walter E. Abbeys of Lansing on Sunday.

Following dinner at the famous open house at the home of another son-in-law and daughter, Mr. and Mrs. Don Jennings of East Lansing, was attended by 70 guests.

### NEED SOMETHING FOR YOUR HOUSE? Then locate it by reading or using the Classified Ads in The Eccentric each week.

### From where I sit... by Joe Marsh

**New Future For Your Present**

How many lies did you get for Christmas? For once I didn't come up with any—could have used a couple this year, too. Instead I got three wool mufflers. Never wear a muffler.

Some people are determined to do something about the Useless Gift Problem—they're holding a "White Elephant Party" Saturday at the Community Hall.

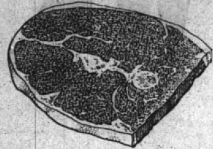
Handy Peterson's the chairman. "Bring any present you'd rather give than receive," he says. "Chances are you'll swap them off for something even worse—but it ought to be fun."

Joe Marsh

# SMART HOMEMAKERS SHOP A-P FOR MENU VARIETY... & HEALTHY LOW PRICES!



YOU CAN PUT YOUR TRUST IN "Super-Right" Quality MEATS!



## "SUPER-RIGHT" Choice Center Cuts Round Steaks LB. 69¢

- |   |  |
|---|--|
| "SUPER-RIGHT" 7-INCH CUT (1st 5 Ribs) <b>Beef Rib Roast</b> LB. <b>59¢</b>  | BELTSVILLE TENDER, YOUNG, OVEN-READY <b>Turkeys</b> 4 TO 8 LBS. AVERAGE LB. <b>49¢</b> |
| "SUPER-RIGHT" CLOSE TRIMMED <b>Sirloin Steaks</b> LB. <b>79¢</b>            | COMPLETELY CLEANED WHOLE OR CUT-UP <b>Frying Chickens</b> LB. <b>43¢</b>               |
| "SUPER-RIGHT" QUALITY <b>Porterhouse Steaks</b> LB. <b>99¢</b>              | "SUPER-RIGHT" SHANK PORTION <b>Smoked Hams</b> LB. <b>39¢</b>                          |
| "SUPER-RIGHT" GUARANTEED FRESH <b>Ground Beef</b> LB. <b>35¢</b>            | "SUPER-RIGHT" <b>Boneless Beef</b> LB. <b>59¢</b>                                      |
| "SUPER-RIGHT" SLADE CUT <b>Beef Chuck Roast</b> LB. <b>39¢</b>              | "SUPER-RIGHT" BONELESS <b>Stewing Beef</b> LB. <b>59¢</b>                              |
| "SUPER-RIGHT" <b>Boneless Rump Roast</b> LB. <b>69¢</b>                     | "SUPER-RIGHT"—CUT FROM BOSTON BUTTS <b>Pork Steaks</b> LB. <b>35¢</b>                  |
| "SUPER-RIGHT" LEAN, PLATE MEAT <b>Boiling Beef</b> LB. <b>10¢</b>           | "SUPER-RIGHT" QUALITY <b>Leg O' Lamb Roast</b> LB. <b>59¢</b>                          |
| "SUPER-RIGHT" SLICED 4-VARIETY PACKAGE <b>Luncheon Meat</b> LB. <b>49¢</b>  | "SUPER-RIGHT" ALL MEAT <b>Skinless Franks</b> 1-LB. PKG. <b>29¢</b>                    |
| "SUPER-RIGHT" <b>Canadian Style Bacon</b> 2-3 LB. END PIECES LB. <b>69¢</b> | "SUPER-RIGHT" <b>Allgood Sliced Bacon</b> 1-LB. PKG. <b>29¢</b>                        |
| <b>Canned Picnics</b> KINGAN BRAND 4-LB. CAN <b>1.99</b>                    | "SUPER-RIGHT" <b>Fancy Sliced Bacon</b> 1-LB. PKG. <b>37¢</b>                          |



\*Because meat represents about 25% of your food budget, it's important to know... A&P's "Super-Right" Quality is a reliable standard of top meat value. "Super-Right" assures you that whatever you choose at A&P is Quality Right... Controlled Right... Prepared Right... Sold Right and Priced Right!

## SWEET AND JUICY CALIFORNIA Oranges 100-110 SIZE DOZ. 39¢

- |   |  |
|---|--|
| FRESH, CRISP—24-SIZE <b>Head Lettuce</b> 3 FOR <b>29¢</b>     | VINE RIPENED, CUBAN GROWN <b>Tomatoes</b> LB. <b>29¢</b>   |
| DUNCAN 45-54 SIZE <b>Florida Grapefruit</b> 3 FOR <b>29¢</b>  | 24-SIZE <b>Pascal Celery</b> STALK <b>29¢</b>              |
| TABLE READY <b>Fresh Cole Slaw</b> 8-OZ. BAG <b>10¢</b>       | GARDEN FRESH <b>Red Radishes</b> LB. BAG <b>10¢</b>        |
| TENDER AND YOUNG <b>Broccoli</b> BUNCH <b>29¢</b>             | WASHINGTON GROWN <b>Winesap Apples</b> 4 <b>49¢</b>        |
| <b>Michigan Yellow Onions</b> 3 LB. BAG <b>29¢</b>            | <b>Florida Fresh Corn</b> 5 EARS <b>39¢</b>                |
| U. S. No. 1 GRADE <b>Idaho Potatoes</b> 10 LB. BAG <b>65¢</b> | OUTDOOR GROWN <b>Fresh Tomatoes</b> 14-OZ. TUBE <b>29¢</b> |

### Time Savers... Value Priced FROZEN FOODS

- |  |  |
|--|--|
| LIBBY'S <b>Strawberries</b> 4 10-OZ. CANS <b>99¢</b> | LIBBY'S BEEF, CHICKEN OR TURKEY <b>Pies</b> 5 FOR <b>99¢</b> |
| LIBBY'S <b>Orange Juice</b> 6 6-OZ. CANS <b>95¢</b>  | LIBBY'S <b>French Fries</b> 3 9-OZ. PKGS. <b>49¢</b>         |
| LIBBY'S <b>Lima Beans</b> 2 10-OZ. PKGS. <b>49¢</b>  | LIBBY'S <b>Green Peas</b> 2 10-OZ. PKGS. <b>39¢</b>          |

265 famous brand groceries reduced in past 5 weeks!

### A GRAND SLAM SAVINGS SCORE OF 701 REDUCTIONS SINCE SEPT. 1

## A&P Apple Sauce 4 16-OZ. CANS 47¢

## Fruit Cocktail 3 29-OZ. CANS 95¢

- |   |  |
|---|--|
| ANN PAGE SALAD DRESSING 4 QT. JAR <b>39¢</b>          | BREAST O' CHICKEN TUNA 6-OZ. CANS <b>33¢</b>   |
| SULTANA TUNA FISH 2 1/2-OZ. CANS <b>47¢</b>           | PRESERVES 4 16-OZ. JARS <b>99¢</b>             |
| KRAFT'S FRENCH DRESSING 4 8-OZ. BOTTLES <b>39¢</b>    | ANN PAGE GRAPE JAM 4 16-OZ. JARS <b>99¢</b>    |
| OUR OWN TEA BAGS 48 BAGS FOR <b>49¢</b>               | SULTANA RICE 2 LB. PKG. <b>27¢</b>             |
| JIFFY PIE CRUST MIX 3 9-OZ. PKGS. <b>28¢</b>          | LIBBY'S CHILI WITH BEANS 24-OZ. CAN <b>35¢</b> |
| DROMEDARY GINGER BREAD MIX 14 1/2-OZ. PKG. <b>25¢</b> | ARMOUR'S TREE 12-OZ. CAN <b>37¢</b>            |
| STRAWBERRY PRESERVES 12-OZ. JAR <b>25¢</b>            | ORANGE JUICE 3 6 1/2-OZ. CANS <b>59¢</b>       |
| PEANUT BUTTER 12-OZ. JAR <b>35¢</b>                   | FRENCH DRESSING 8-OZ. BOTTLE <b>17¢</b>        |
| MAYONNAISE 12-OZ. JAR <b>29¢</b>                      | SPARKLE GELATIN DESSERTS 8 4-PKGS. <b>25¢</b>  |

LOOK! FOR THE VALUE-LEADER SHELF SIGNS... THEY'RE GROWING IN NUMBER EVERY WEEK!

- |   |  |
|---|--|
| SWIFT'S PREM 12-OZ. CAN <b>37¢</b>        | LUX SOAP 3 REG. SIZE 2 BATH CAKES <b>25¢</b>       |
| SWIFT'S CORNED BEEF 12-OZ. CAN <b>49¢</b> | SURF 19-OZ. PKG. <b>25¢</b>                        |
| BARBECUE SAUCE 18-OZ. BOT. <b>39¢</b>     | PALMOLIVE SOAP 3 REG. SIZE 2 BATH CAKES <b>25¢</b> |

- FRESH, COMPLETELY CLEANED
- Michigan Smelt** LB. **25¢**
  - Fresh Cod Fillets** LB. **39¢**
  - Oyster Stew** CAPN JOHN'S FROZEN 10-OZ. CANS **29¢**
  - Fresh Herring** COMPLETELY DRESSED LB. **49¢**
  - Fresh Whitefish** COMPLETELY DRESSED LB. **49¢**

JANE PARKER CINNAMON **Dutch Apple Pie** REG. 49¢ **39¢**

- JANE PARKER—SAVE UP TO 6¢ A LOAF!
- White Bread** 1 1/2-LB. LOAF **17¢**
  - Layer Cake** VANILLA OR CHOC-ICED 6 1/2-INCH SIZE **49¢**
  - Danish Nut Ring** JANE PARKER REG. 39¢ NOW ONLY **29¢**
  - Protein Bread** JANE PARKER—LESS CALORIES PER SLICE 14-OZ. LOAF **23¢**
  - Heat 'n' Serve Rolls** PKG. OF 12 **19¢**
  - Raisin Cookies** REGULARLY 29¢ A PKG. NOW **2 PKGS. 45¢**
  - Potato Chips** JANE PARKER 1-LB. BOX **59¢**

- SUNNYBROOK GRADE "A"
- Large Eggs** DOZ. **53¢**
  - Silverbrook Butter** FINE QUALITY 1-LB. PRINT **61¢**
  - Ched-O-Bit Cheese Food** 1 1/2-LB. LOAF **69¢**
  - Mel-O-Bit Slices** PROCESSED CHEESE 2 8-OZ. PKGS. **49¢**
  - Coffee Ica Cream** PLASTIC CONTAINER PT. **29¢**
  - Ice Cream** CRESTMONT, VANILLA OR NEAPOLITAN 1/2-GAL. SLICE PACK **79¢**

- SULTANA—NEW LOW PRICE
- Salad Dressing** QT. JAR **29¢**
  - IONA CREAM STYLE **Corn** 16-OZ. CAN **10¢**
  - A&P Tomato Juice** 2 46-OZ. CANS **45¢**
  - A&P Fancy Peas** 16-OZ. CAN **21¢**
  - Sliced Pie Apples** COMSTOCK 2 15-OZ. CANS **39¢**
  - A&P Grape Juice** 24-OZ. BOT. **25¢**
  - Whole Kernel Corn** A&P 2 16-OZ. CANS **27¢**

- More Grocery Values!
- IONA BARTLETT **Pears** 3 29-OZ. CANS **89¢**
  - A&P SECTIONS **Grapefruit** 2 16-OZ. CANS **27¢**
  - LIBBY'S BEEF STEW 24-OZ. CANS **35¢**
  - WHOLE GREEN BEANS SULTANA 2 15 1/2-OZ. CANS **35¢**
  - WHOLE KERNEL CORN STOKELY'S 2 16-OZ. CANS **31¢**

SAVE "5¢ OFF" CARTON **Keyko Margarine** 1-LB. CTN. **24¢**

All prices in this ad effective thru Sat., Feb. 4. AMERICA'S FOREMOST FOOD RETAILER SINCE 1859

