

# Sport Shots

By DICK KELLEY  
Sports Editor

## The Birmingham Economic

# SPORTS

PAGE 6 FEBRUARY 16, 1956

## Waterford Snaps Southfield First Loss in 8 Starts

UPSETS highlighted the prep basketball action last weekend with Southfield and Fitzgerald the victims.

Both teams were on winning streaks when the inevitable happened. It was the initial loss of the season for Fitzgerald and first defeat in eight games for the Jays.

The Spartans lost in overtime, 44-42, to Troy in an Oakland B contest but are still securely embedded in first place in that loop and only a complete tailspin could pry them from that spot.

**SOUTHFIELD** is in a more dangerous position in the Inter-Lakes conference. Friday's loss to Waterford puts the Jays in a tie for first place with Berkeley and the meeting of the two schools Friday will probably decide the league titlist.

After the Friday night contest both schools will have one league game remaining on their schedules. Southfield will travel to Walled Lake and Berkeley will host Waterford. The winner of tomorrow night's game will have to win the finale or the race could end in a tie.

**BIRMINGHAM'S** chances in the Eastern Michigan league will be decided at Port Huron when the Maples clash with the league-leaders. A victory will put the Maples a game behind the Big Red, for the top spot and a defeat will all but eliminate them for another year.

It has been a tough season for coach John Petrakis who has been hurting from injuries for the past month.

**CENTER** Bob Isbell hurt his ankle in a scrimmage before the Fernalde game and may be lost for the season. Guard Tom Kelly has a broken bone in his hand and is a doubtful starter for a couple more weeks. Forward Jim Traa left the squad four weeks ago to have a shoulder operation correcting old football injury.

As a result Petrakis plays about nine men every game with substitutes running in and out, reminiscent of Paul Brown's Cleveland Browns.

There should be plenty of activity on the Maple bench Friday night in Port Huron.

Overheard from a fallen skater at the new Eton Park municipal ice rink: "The ice may be artificial but the falls are real."

There was plenty of activity at Cranbrook Saturday afternoon when the Cranes hosted University School of Cleveland in wrestling and basketball. University, an Inter-State league foe, took the wrestling match but were outclassed in the basketball game.

An interesting scene took place in the Crane dining hall before the games began. With the Crane players already seated, the University boys came filling in and took their places and both sides sized up their opponents all through lunch.

**MARCH 1** should be quite a night at the Birmingham Community House when Duffy Daugherty and his Michigan State football coaching staff come to town for the Oakland county MSU club's banquet honoring the prep football players of the area.

Duffy will be the main speaker and films of State's thrilling Rose Bowl victory over UCLA will be shown.

**Oakland Hills Elects Officers**

William H. Beech has been elected president of Oakland Hills Country Club, succeeding North Brannan.

Other 1956 officers are T. F. O'Connell, vice-president; H. Homer Aldredge, secretary and John S. French, treasurer.

Waterford snapped Southfield's seven-game winning streak, 57-47, Friday night, forcing the Jays into a tie with Berkeley for the Inter-Lakes basketball league lead.

Berkeley and Southfield face each other Friday night on the Jay court with league crown probably going to the winner. Berkeley won Van Dyke, 59-53, Friday night to match Southfield's 5-2 league mark.

Southfield, which has always had trouble on the Waterford court, led at the first quarter, 14-11, but the margin shrank to 25-24 at the intermission.

Waterford took the lead in the third period and Southfield could never catch up. In the final stanza Waterford cashed in on Southfield's fouls, clicking on 10 free throws to put the game under wraps.

Bob Evans of Southfield and Bud Gillis of Waterford were tied for scoring honors with 18 apiece. Ken Moser, who had 62 points in last two games, managed only 10 against against Waterford.

Southfield's foul shooting, 72-83, with Bob Shaw contributing 22 points.

**BERKLEY** had trouble with hapless Van Dyke for three periods but a fourth quarter spurge outdistanced the cellar dwellers of the Inter-Lakes loop.

Center Bruce Gentile of Berkeley took game scoring honors with 21 points. It was the seventh win in 11 starts for Berkeley this season.

**SOUTHFIELD'S** loss to Waterford was the first setback handed the Jays since Birmingham turned the trick Dec. 20 in a non-league clash.

Since that game the Jays had won six straight league games and a non-leaguer from Livonia, Bentley.

**SOUTHFIELD** FG FT TP  
Leighton 3 0 6  
Filar 3 3 9  
Lamb 2 0 4  
Moser 3 4 10  
Evans 7 4 18  
18 11 47

**WATERFORD** FG FT TP  
Gillis 7 4 10  
Kruske 3 4 10  
Moser 11 3 11  
Bersche 3 6 12  
Dunbrumbe 3 3 5  
Boh 1 1 1  
18 21 57

Score by quarters:  
Southfield 14 11 13 9-47  
Waterford 11 13 15 18-57

**Michigan State University Club of Oakland County** will hold its annual football banquet honoring high school football players of the county March 1 at 7 p.m. in the Birmingham Community House.

Duffy Daugherty, MSU football coach, will be the main speaker at the affair which is being resumed after several years' absence.

Carl Lemle, Birmingham coach, and Maple stars Jim Traa and John Appleford; Monte Charles, Southfield coach and Jay players Bernie Masovich and Sam Manders; Bloomfield Hills coach Don Hoff and players Harvey Pranon and Ed Haninger.

Others attending are Troy coach Bob Nyquist and end Sim Atch and Cranbrook coach Fred Campbell and George Gary, captain of the 1955 Crane football squad.

**FILMS** in color of MSU's exciting Rose Bowl victory over UCLA will be shown and footballs autographed by the MSU squad will be given away.

Senior members of MSU's Rose Bowl squad also will present for the banquet.

Co-chairmen for the affair are Don Bergeson and Bud Carrigan and club president is Dick Ernst.

**University Whips Crane Wrestlers**

Scoring only two wins and one pin, Cranbrook wrestlers were defeated, 23-11, Saturday afternoon on the Crane mats by University School of Cleveland.

All Sanborn of Cranbrook scored the pin in the 168 pound class over Paul Taylor of University. Lou O'Connor won the 115 pound division and captain Ron Hummel took the 141 pound class.

Despite the score the matches were even in almost every event but University managed to win the close ones for the victory.

**Rite-Way Defeated in YMCA League**

Rite-Way of Birmingham lost to the St. Antoine YMCA, 76-58, last week on the opponent's court in a Detroit YMCA league game.

Roger Reynolds paced the Rite-Way attack with 43 points while Bob Vincent contributed 11 against the league-leaders.

The loss gives Rite-Way a 6-4 season record.

**Maple Reserves Score Easy Win**

Using a skillful offensive attack, the Birmingham reserves coasted to an easy 57-35 league victory over the Hazel Park seconds last Friday night here.

The combination of strong rebounding and shooting on the part of Chuck Gibson and Fred Nickolas completely demoralized the Vikings in the first half. Time and time again the Maples used a fast break successfully to rack up easy lay-ups.

After building up a 28-6 advantage late in the second quarter, coach Lew Ferry substituted freely the rest of the game.

The visitors never could find the range and no Viking hit double figures.

Nicholas took top scoring honors for the night with 19 points. Gibson also hit 11 for 19 points.

Oscar Lewis led the visiting team's points getters with eight.

**RESTING COMFORTABLY** at the Birmingham Junior House bowling league is the Adams Shell team. In front with the ball is captain Ray York. In the rear are (from left) Jim Herbst, Jim Milford, Jr., Carl Miller and Ted Herbst. Adams Shell has been setting the pace all season.

## Maples, Jays Play Key Cage Games

Two of the most important basketball games of the season are on tap Friday night for Southfield and Birmingham.

The Jays host Berkeley in a crucial Inter-Lakes league game and the Maples travel to Port Huron seeking a crucial victory in the Eastern Michigan league.

Southfield and Berkeley have identical 5-2 league records and the winner will take over the top spot in the loop with each team having one league game left.

**KEY** to Southfield's success will be its ability to control the scoring of Berkeley center Bruce Gentile who has been the hottest scorer in South Oakland county in recent weeks.

The Jays take a slight edge in this game because they are playing at home and already own one victory over Berkeley. Southfield whipped Berkeley, 59-49, Jan. 15 in the first meeting of the two schools.

The game was not as one-sided as the score might indicate. Southfield trailed at the half, 26-8, and only a tremendous second half rally saved the game for Southfield. Gentile was held to ten points in that one but has been on a scoring rampage ever since and could prove a thorn to the Jays Friday night.

**COACH** Bob Water will counter with his top scoring duo of guards Bob Evans and Ken Moser. If they are able to outscore the hard to beat.

Coach John Petrakis' Birmingham club must be to stay on behind Port Huron in the E.M.L. A Port Huron win will clinch the league crown for the Big Red.

The Maples will play without the services of two regulars. Center Bob Isbell will be benched with a fractured ankle and guard Tom Kelly will be out with a broken bone in his hand.

**ISBELL** who has missed the Maples' last two games, was the club's leading scorer and rebounder before being sidelined. Isbell may be lost for the rest of the season.

In other area prep games Friday night Troy will host Lake Orion, Flint Tech will be at Cranbrook and Oak Park at Bloomfield Hills. Fresh from upsetting Fitzgerald last Friday, Troy will be the favorite over the cellar-dwellers of the Oakland B league.

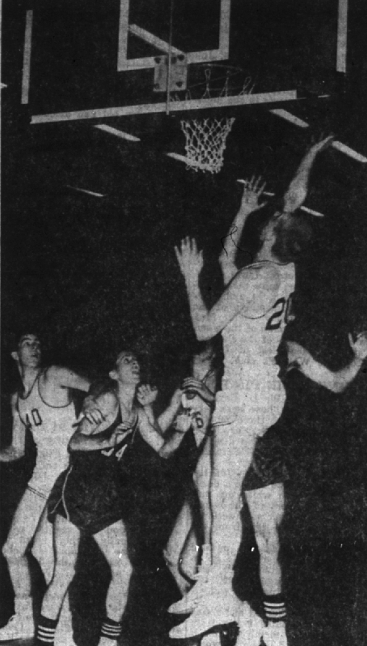
**BOTH** Cranbrook and Bloomfield will be out to avenge defeats suffered earlier this season. Tech defeated the Cranes, 63-56, and Oak Park edged the Barons, 50-47, in the first meetings of the schools. Playing at home will be in their favor in the return matches.

**BASKETBALL**  
Feb. 17—Birmingham at Port Huron, 8 p.m.  
Berkeley at Southfield, 8 p.m.  
Flint Tech at Cranbrook, 8:15 p.m.  
Oak Park at Bloomfield Hills, 8:15 p.m.  
Feb. 21—Walled Lake at Cranbrook, 4:20 p.m.  
A. E. Smith Jaycee at Bloomfield Hills, 3:30 p.m.

**WRESTLING**  
Feb. 18—East Lansing at Cranbrook, 2:00 p.m.  
**SWIMMING**  
Feb. 18—Mt. Clemens at Birmingham, 7:30 p.m.  
**CYO Basketball**  
Feb. 18—Holly Name vs. St. James, Fernalde, 1:30 p.m.

**ADULT RECREATION**  
Feb. 21 (and every Tuesday evening)—Birmingham High School, 7:30 p.m.

Want a good used car? Look in the Classified column under "For Sale—Automobiles."



PLAYERS watch while John Fleser of Birmingham (No. 20) goes up for shot in the Hazel Park Game Friday night. The Maples' Don Picmann (No. 40) and Bob Croeagan (No. 64) of Hazel Park wait under the basket. Birmingham won, 68-48, Fleser contributing 18 points.

## Prep Cage Standings

(As of Tuesday, Feb. 14)

Team	W	L	W L
Port Huron	7	1	9 2
Birmingham	5	2	7 3
East Detroit	5	3	7 4
Fernalde	4	3	5 6
Mt. Clemens	2	5	3 6
Hazel Park	1	7	1 8

**INTER-LAKES LEAGUE**

Team	W	L	W L
Southfield	6	2	9 5
Berkeley	6	2	7 4
Walled Lake	5	3	6 4
Waterford	4	4	6 4
Farmington	3	5	5 6
Van Dyke	0	8	0 11

**OAKLAND B LEAGUE**

Team	W	L	W L
Fitzgerald	7	1	10 1
Madison	7	3	9 3
Avondale	6	3	6 4
Clawson	4	5	4 4
Troy	4	5	5 7
Roseville	2	7	7 9
Lake Orion	1	8	1 9

**Friday night's results:**  
Troy 44-Fitzgerald 42  
Avondale 65-Roseville 63  
Madison 62-Clawson 54

**Well, Well!**

Dallas, Tex.—When the light on the speaker's stand at the Dallas Electric Club went out, members composed of electrical engineers and contractors—traced wiring, inspected connections and tore into the lamp base. It was then that a hotel employee discovered the bulb had burned out.

**LEARN TO DRIVE**

Easily Correctly Safety Individually

DUAL CONTROL METHOD  
Country Wide Pick-Up and Return of Students  
Seven Days a Week  
Michigan Driver Training  
MI. 4-3325  
610 N. Woodward, Birmingham

## Maples Score Easy Win Over Hazel Park

Using 14 players and scoring 29 field goals proved the combination needed to spell a 68-48 league victory for Birmingham high school over Hazel Park last Friday night.

Viking Dan Retzer scored the first two points of the game. But led by John Fleser's deadly one hand jump shot, the Maples surged to a 16-12 first quarter advantage.

Both teams hit extremely well in the second stanza, but George Huffman went on a scoring spree of ten points in less than eight minutes to gain victory for the Maples to a 41-27 halftime advantage.

**DURING** the rest of the game, Maple Coach John Petrakis substituted freely to give players a chance to gain valuable experience.

The only bright spot for the visitors was the sparkling play of Nick Kasmoff. The scrappy Hazel Park guard sank difficult long shots from all over the court while setting up many other baskets.

Both Maple regulars Bob Isbell and Tom Kelly were out of action in the contest because of minor injuries.

**REDEEMER** Wins In YMCA Loop

Lutheran Church of the Redeemer maintained its winning ways in the YMCA cage loop by taking a 2-0 lead over the rival First Baptist Church in a game Monday night.

Lutheran Church led 8 to 2 at the end of the quarter but went to the floor late in the first half at 10 points each after half time. First Baptist went ahead 18 to 14 in the third quarter but could not stem the tide of the Lutheran rush in the fourth quarter and succumbed to the Redeemer, 24 to 18.

The scoring for the Maple Avenue lads was evenly divided but for First Baptist Jack Kidwell was high with 7 points.

**FIRST** Presbyterian Church bounced back from its defeat of a week ago with a leisurely 37 to 19 win over the rival Lutheran church in the process of rebuilding and has an inexperienced group. Jim Dowd with 10 points paced the Presbyterians who led all the way.

In the final game of the evening, First Methodist Church trailed Embury Methodist with 18 points at the half but came back with a 10 point third quarter to go ahead 34 to 18 and stay in front. The final quarter was a romp for the First Methodist who scored 18 points to their opponents 9. Final score was First Methodist 42, Embury 27.

**Jim** Redner scored 14 points for First Methodist. High scorer of the evening was John Rutter of Embury Methodist with 18 points.

**GAMES** Thursday, February 16 feature Congregational Church vs. Embury Methodist Church at 7 p.m. and First Methodist vs. First Baptist at 8 p.m. Games will be played at First Baptist Church.

The game between First Presbyterian and St. James Episcopal has been postponed to a later date due to the Father and Son banquet at First Presbyterian church.

**MT. CLEMENS** looks like the favorite to host Fernalde out of the cellar. The Bathery's biggest hopes rest in Tom Coulon, diver and freestyler.

Coach J. Jay Myers expects the most trouble this year from Hazel Park. Led by freestyler Nick Carone, the Vikings also have a strong contender in diver Gary Boat.

Events. Giegie also took a second in the 150 yard individual medley. The closest competitor was Jerry's brother, John Hyley. The game between First Presbyterian and St. James Episcopal has been postponed to a later date due to the Father and Son banquet at First Presbyterian church.

**GIVE YOUR HOME A NEW LOOK**

AND NEW LIVABILITY with our complete HOME SERVICE

- ADDITIONS: Activities Rm., Bedroom, Bath
- MODERNIZATION: Kitchen, Bath
- REPAIRS OF AGING KITCHENS
- PAINTING, DECORATING, RE-ROOFING
- MAINTENANCE

Call R. W. HOLMES MI 4-4984

**Jiminy Filter says:**

**GET CLEAN HEAT AND MORE OF IT!**

Better replace old, dirt-clogged furnace filters with Fiberglas "Dust-Stop" Filters NOW for a cleaner, warmer house this winter.

Get them at **FIBERGLAS DUST-STOP AIR FILTERS**

All 1-Inch Sizes **79¢**  
All 2-Inch Sizes **\$1.19**  
WE DELIVER

**BIRMINGHAM BLUE PRINT AND SUPPLY COMPANY**

- Blue Prints • White Prints
- Photostats • Transparencies

**QUICK SERVICE While You Wait**  
PH. MI 4-3738

**WE AMIT TO PLEASE**

Located in Birmingham Opposite Water's—414 & Woodward  
Open Weekdays & Saturday A. M.