



**Season's Greetings**

... and may you enjoy success and happiness through all the days and months of the New Year ahead.

**HUGH C. WHITE**  
AGENCY Midwest 4-3610

217 Pierce Street



AMONG THE 80 LADIES OF THE SENIOR WORKSHOP present for their annual holiday party were (seated from left) Mrs. Grace Perry, 543 West Frank; Mrs. Emma Taup, 935 Garden Lane, who also celebrated her 80th birthday, and Miss Althea Masters, 1763 South Bates, representing their sponsoring organizations are (standing from left) Mrs. Felix Harrison, president of the Postcomers; Mrs. J. R. Ewing of the Community House, and Mrs. Wright Tisdale of the Junior League.

**Yule Party Marked a Farewell**

The sixth annual Christmas party for the ladies of the Senior Workshop was given on Friday by the Junior League and the staff of the Community House. The ladies met for luncheon at the Community House, followed by a Christmas program by members of the Birmingham Musical.

The party marked a farewell between the Junior League and the Senior Ladies. As is customary in Junior League policy, after demonstrating a community need over a period of years, the League turns over the project to other interested community groups.

The Junior League, with the cooperation of the Community House, initiated the Senior Workshop, and having demonstrated the need for this group in the community, will now turn it over to the Postcomers club, who will carry on the League's work with the Senior Ladies.

**Marygrove Coeds Active on Campus**

Helping with arrangements for the freshman students' traditional Christmas party at Marygrove college Monday was Denise Guilmet, daughter of the Chester Guilmetts of Riverside drive.

Jeanne Seitz, daughter of Mr. and Mrs. Eugene R. Seitz of Norchester road, Southfield township, is assisting with the annual Christmas drive for needy families, an all-school activity being conducted for the twenty-fifth consecutive year.

Another student at Marygrove, from this area, Suzanne Daley, has been accepted into the Frim club, open to science majors at the college. She's a junior and the daughter of Thomas E. Daley of 1641 Birmingham Blvd.



**Accurate WATCH REPAIR**

Take the time to keep your watch ON time! Let our Service Department give your watch a thorough checkup now. The little time it takes is more than paid for in future savings and service. Drop in today!

MI 4-8215  
**George Ross**  
Jewelers  
244 E. Maple  
Free Parking In Rear  
Official Watch Inspectors For New York Central and Pere Marquette R.R.

**DEMONSTRATION ALL DAY SATURDAY, DEC. 22nd**



SHOPSMITH® is the revolutionary home power workshop in one unit. It requires no more room than a bicycle, yet it gives you all the five major power tools you need to complete any project: Saw, Disc Sander, Lathe, Vertical and Horizontal Drill! SHOPSMITH's exclusive Speed-Dial gives you instant selection of correct tool speeds; you can Power Shift from 700 rpm to 5200 rpm! The built-in 1/2 hp motor, all belts and pulleys, are enclosed for safety. You've got to see SHOPSMITH demonstrated to believe it!

ONLY SHOPSMITH LETS YOU COMPLETE THE JOB!

GIVE HIM SHOPSMITH FOR CHRISTMAS FOR AS LITTLE AS \$3 A WEEK!

**GLENN WING POWER TOOLS**  
1437 SOUTH WOODWARD AVE.  
Five Blocks North of 14-Mile Road  
BIRMINGHAM MI 4-0444  
DAILY 8 to 6:00 — SATURDAY 8 to 5:00

Have you ordered your **FIGURE** for **Christmas**?

You too can have a lovelier, more slender figure if you'll devote a few minutes each day to the STAUFFER HOME PLAN of effortless exercise and caloric reduction. If you're tired of heavy hips, thighs, legs and wastline "rolls"... that add accusing years to your appearance... the STAUFFER HOME PLAN is the lazy way to have a beautiful figure.

**FREE DEMONSTRATION.** A Stauffer representative will demonstrate the Stauffer Home Plan for you, in your own home, at your convenience. No obligation. Call or write today.

**IDEAL CHRISTMAS GIFT**  
For the Entire Family

**BUY IT FOR 50c A DAY**  
**CALL—University 4-7733**

**APTITUDE TESTS**  
enable YOU to learn the kind of work YOU can best succeed in, or the kind of studies YOU should follow. (For men and women, boys and girls.)  
Vocational Counseling Institute  
Daniel L. Burke, Director  
954 Maccahee Bldg., Temple 1-1851  
Woodward near Warren  
11 Years Serving Detroit

OPEN EVERY EVENING TILL CHRISTMAS

the **GIFTS** he'll like best ... are **HERE!**

**Man-Favored Styles for Christmas Giving**

**TIES**  
\$1.50  
\$2.50  
\$3.50  
\$5.00  
\$7.50

**MALLORY HAT GIFT CERTIFICATES**  
\$8.95 to \$20.00

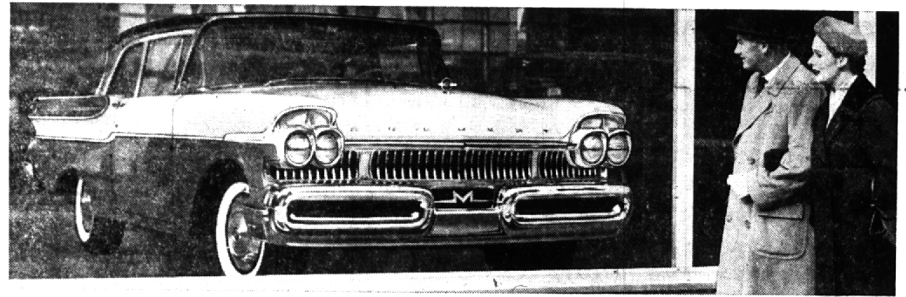
**ANSON JEWELRY**  
Cuff Links \$1.50 UP  
Sets  
Tie Bars

**CARDIGAN SWEATERS**  
3-ply Australian Wool  
• beige \$9.95  
• light grey  
• oxford grey

**BOTANY AND ESQUIRE SOCKS**  
\$1.00 to \$3.50

**HANLEY BELTS ... \$3.50 to \$12.50**

**PECK'S MEN'S WEAR**  
108 South Woodward Birmingham



Don't guess Mercury's price by the new size and luxury (never before has so much bigness and luxury cost so little)



IN MERCURY'S LOWEST PRICE SERIES...Montrey Phaeton Coupe. Also in the big-value Montrey series: Phaeton Sedan, 2-door Sedan, 4-door Sedan.

THE '57 MERCURY brings you the biggest size increase in the industry. It's over 17 1/2 feet long, more than 6 1/2 feet wide. Bigger in every important dimension — with inches more leg room, hip room, shoulder room, headroom.

Mercury brings you Dream-Car Design — shared by no other car on the road. Notice the unique straight-line sweep of the roof, the V-angle Tail-lights, the rear projectiles, the Jet-Flo Bumpers, and the Quadri-Beam headlights.

Exclusive Floating Ride combines 4 of the greatest bump-smothering features ever put between you and the road. Exclusive Keyboard Control outdates all push-button transmissions. An exclusive power seat that "remembers" finds your favorite seat adjustment at a touch of a dial. In all, there are 21 dream-car features waiting for you to see and try.

**3-WAY POWER CHOICE** — A 290-hp Turnpike Cruiser V-8 engine is optional. A 255-hp Safety-Surge V-8 with Power-Booster Fan is standard in Montclair Series. A 255-hp Safety-Surge V-8 is standard in Montrey Series.

All engines feature a unique Thermo-matic Carburetor. Controls temperature of air engine breathes. Greater efficiency and economy result.

Power-Booster Fan in Montclair series coasts when not needed for cooling, saves power and fuel other cars waste.

**YOU PAY LITTLE MORE DOWN...OR PER MONTH...THAN FOR THE LOWEST PRICED CARS** Check price tags at our showroom. You'll find that anyone who can afford a new car can afford BIG M bigness and luxury.

ALL-WEATHER AIR CONDITIONING IS NO LONGER A LUXURY...IT IS A LOW-COST FEATURE WITH MERCURY'S NEW CLIMATE-MASTER SYSTEM.

STRAIGHT OUT OF TOMORROW **MERCURY for '57** with DREAM-CAR DESIGN

Don't miss the big television hit, "THE ED SULLIVAN SHOW," Sunday evening, 8:00 to 9:00, Station WFBK-TV, Channel 2

**BOB FROST Inc.**  
479 S. Woodward Ave. Birmingham  
Phones MI 6-2200 and JO 6-3933