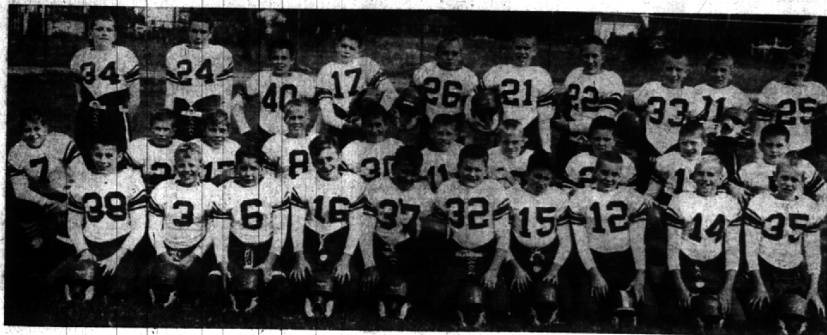


Local Boys on 1956 Little League Football Teams



Left to right, Front Row: Jim Sifferman, Gage Cooper, Bob Bailey, Pete Hutton, Mike Harris, Bob Lucas, Tom Fredericks, George John, Dan Mathews, Bruce Brown, Mike Schuck. Second Row: Kim Bailey, Bob Buck, Dan Fouracre, Marty Reddy, Bob Simanock, Jim Hartkopf, John Perry, Tom Hallane, Felix Mock, Dick

Gibson. Third Row: Dick Mills, Terry Overton, Larry DuCharme, Fred Jaynes, Craig Kirby, Dick Egger, John McCracken, Geoffrey Gilbert, Pete King, Don Spencer. Fourth Row: Jim Lansing, Assistant Coach; Dick Kieppe, Head Coach; Don Borgeson, Assistant Coach.

B'ham's Success Not In Win-Loss Record

By JACK KEHOE

The last whistle note sounding the end to the little football activity in the community echoed several weeks ago. Most of the youthful enthusiasm of the junior size gridders is presently directed to other sports and the family TV sets.

The junior hockey program and the little basketball leagues will take up the slack left by the completion of Birmingham's highly successful 1956 football year. But in spite of the fact that the boys will long remember and profit from other sports certainly have their skills and special attractions but some compare with the body contact and group spirit of the pigskin pastime.

"I will play fair and strive to win. But win or lose I will always do my best."

LEAGUE OFFICIALS, parents, fans and the community at large can well be proud if all or a portion of these pledges can be permanently absorbed in the boy's personality and character.

THE TEAMWORK and fellowship established during the months will leave a lasting impression on the young minds and hearts. Many of those memories will be rekindled, again and again, throughout the years as the boys—soon to become men—will glance at these photographs.

The Birmingham Football League, a member of the All-American Conference, presented team pictures and certificates of participation to each player at their annual banquet recently. The photographs were prized mementos for the young fellows.

To its credit, the league at every opportunity, attempted to instill in the boys the more basic and important values of competition, more than the actual play. These values are very well summed up in the league's preamble.

PREAMBLE

I trust in God.
I love my country and will respect its laws.
I will develop a strong, clean, healthy body, mind and soul.
I will develop a strong desire for sportsmanlike conduct.
I will develop courage in defeat, tolerance and modesty in victory.

By Birmingham fielding three variety teams and three freshmen teams—Wolverines, Tigers, Brown—gave opportunity for the maximum number of boys to play. Outstanding talent was distributed over all the squads, equalizing their experiences and ability. If the local organization had restricted itself to one or two teams, they could have concentrated their manpower on one group, thereby having a stronger representation and record in league competition.

NEXT YEAR the league will be expanded again with more boys, more teams, and greater participation for all concerned. But to the adults who control the operation they will have to maintain a definite perspective. It is a boy's world where they play with the natural capacity which only the little fellows are capable of. As long as the boys and their level is not infringed upon by the accelerated grown-up values, then the league will remain one of the valuable assets of Birmingham.



Noted!
SUPER SIZE
SUPER CLEAR
SUPER BRIGHT
Supernap
PRINTS only 5¢
Take Films to Camera
Counters Serviced by
WHITE PHOTO, INC.

Hollywood Adjustable
WALKER
RENTAL & SALES
• HOSPITAL BEDS
• BED SIDES
• WHEEL CHAIRS
• WALKERS
• CRUTCHES
MICHIGAN
FIRST AID
Invalid needs—sick room supplies
LI 2-3927 JO 4-6847
1621 S. Woodward, R. O.
3 doors north of 10 Mile

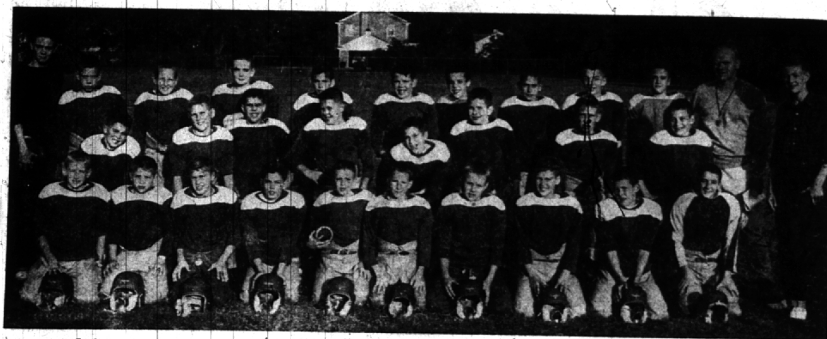


That's because
Sanitone
DRY CLEANING
is extra thorough!

May we suggest you try us for your next dry cleaning job. We promise you'll be able to see and feel and smell the difference.



MI 4-1507
DOUGLAS
CLEANING CO.
534 S. Woodward
Birmingham



Left to right, First Row: Mike Flynn, Jerry Purdy, Art Tregenza, John Tower, Jim Boyle, John Wiggins, Jim Steiner, Gary Witbeck, Randy Matthews, Jim Farrell. Second Row: Dick Marr, Jim Brodie, Harvey Wallace, Dave Hyde, Jim Gill, Kris Van Thiesen, Webb Hecker, Bob LaMarre. Third Row: Scoop Lyons, Man-

ager, John Clark, Jim Cheney, Mike Lyons, John VanderRoest, Dave White, Brent Miller, John Slater, Gene Johnson, John Emmett, Head Coach Hardin Krutz, J. Lyons—Manager. Absent from picture: Chas. Wessels, Wayne Flor, John Ridley.



Left to right, Front Row: Bob Webster, Larry Smith, Charles West, Vincent Rogers, Ron Smith, Jerry Lawrence, Rick Menoch, Jack Reynolds, Dan Draper, Jim Butler. Second Row: Bob Kramb, Jim Copeland, Fred Ewald, Bill Stephenson, Rick Fairchild, Ken Poole, Pete Jackson, Jon Marshall, Bill Irvine, Guy Thorn-

burgh. Third Row: Jim Hedrick, Tom Thompson, Neil Amalfitano, Leonard Kilby, John Schwenke, Rick Reid, Bill Weeks, John Theobald, Roger Wotila, Paul Engel, Joe Anderson, Head Coach; Wally Perkins, assistant coach; Bud Jones, assistant coach.



Left to right, Front Row: Tim Goodwin, Bob Fife, Don Tregenza, Mike Lindquist, Tom Fritz, Dick Mosher, Steve Ord, Craig Johnson, Tom Gray, Kirk Quillian. Second Row: John Haguire, Don Volker, Doug Windler, Dick Sauerbrun, Ed Gray, Jeff Coffin, Hugh Loud, John

Strickland, Mike Krutz, George Barrie. Third Row: John Fauver, Ross Pierce, Charles Sturz, Don Sawyer, Bill Wineman, Tom Abbott, Bill McNaughton, Bob Brown, Stan Cutter, Tom Richards, Steve Grether. Rear: Dick Jarnagin, Coach.

In the face of price increases by all other cars
NASH PRICES ARE DOWN!



JOIN THE SWING TO THE TRAVEL KING
Yes, while power is way up—255 H.P.—Nash prices are down—\$251 to \$353 less for the big new Ambassador V-8. Nash now brings you the biggest big car buy of '57 with bold new Lightning Streak Styling, new 4-beam headlights, and the only V-8 with famous Nash economy! Come in! Travel test it now!

BIRMINGHAM NASH, Inc.
666 S. WOODWARD AVE. MIDWEST 6-3900