



DIANE L. KOPPIN

Koppins Announce Daughter's Troth

Mr. and Mrs. Russell H. Koppin of Coral Gables, Lathrup Village, invited 100 guests to an open house to announce the engagement of their daughter, Diane Lenore, to Richard D. Kendall.

The bride-elect is a graduate of Birmingham high school, and recently received her degree from the University of Michigan, where she was affiliated with Alpha Delta Pi.

Her fiancé, son of the Howard A. Kendalls of Detroit, is also a U. of M graduate.

They plan a fall wedding. The ordinary "lead" pencil is misnamed. Graphite, mixed with clays and lubricants, composes what is termed the pencil's "lead."



GREETINGS & GIFTS are brought to you from Friendly Neighbors & Civic & Social Welfare Leaders through

WELCOME WAGON On the occasion of Change of residence Arrivals of Newcomers to Birmingham

MRS. H. WALES PRICE Midwest 4-0516

(No cost or obligation)

"a clean car rides better"

**J
A
X
K
A
R
W
A
S
H**

CORNER HUNTER AND FOREST BIRMINGHAM

Localites Win Prizes for Art

Wallace Mitchell, director of Cranbrook museum of art, was on a jury of three which selected eight teen pieces of art for exhibit prize awards for the artists exhibit sponsored by Temple Israel Sisterhood in Detroit.

First prize of \$150 went to Willard E. Parker of Cranbrook for his painting. Richard Abell of Beverly road, Southfield township took a prize for a textile and another went to Harry Saviak of Cranbrook for an oil painting. The Brotherhood prize was awarded to Dorothy Siddall of Beverly Hills.

Basements waterproofed TW 1-2000

MSU To Offer Extension Course On Curricula

In response to requests from the Birmingham area, Michigan State university will offer an extension course, "Principles of Curriculum Development, during the winter term in Birmingham. Interested area residents may

register at the first class, Jan. 7, 1957. The course, which will meet each Wednesday night at Birmingham high school, will carry three hours of graduate or undergraduate credit. The course will develop principles of instructional improvement through the critical analysis of practices found in public schools.

In an attempt to meet the growing demand for graduate courses and other advanced classes, Michigan State is increasing its off-

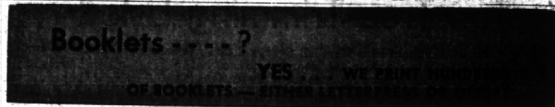
campus education. Extension courses are coordinated through the Continuing Education service. Interested residents may obtain school officials or writing to the Continuing Education service. Rel- the Continuing Education service. Rel- the Continuing Education service. Rel-

the magnificent **Magnavox** high-fidelity television • radio-phonographs

McCallum and Dean

409-411 E. Maple

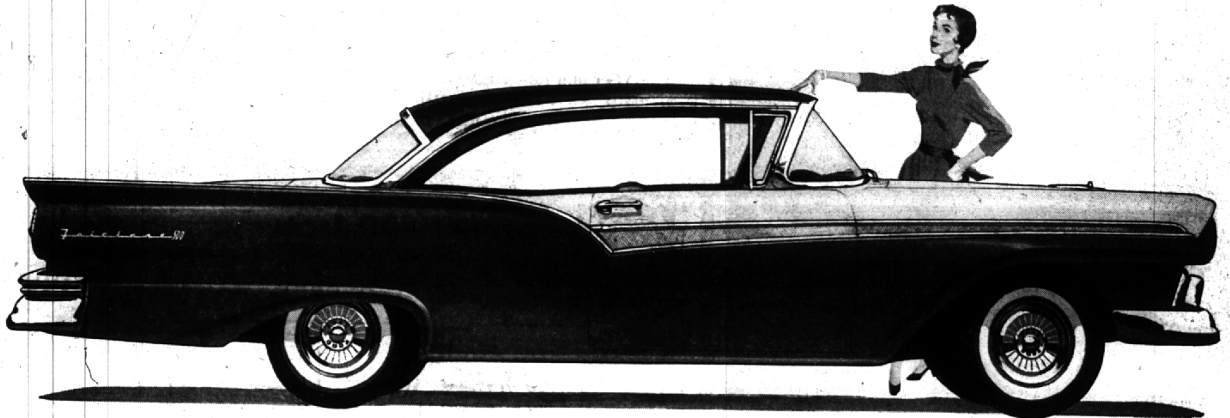
Midwest 4-5230



Three Detroit Salesmen . . . TR 5-2629 . . . Plant MI 6-2000

The **AVERILL PRESS INC.** of Birmingham
A COMPLETE PRINTING SERVICE—FROM TYPESETTING TO MAILING

FORMERLY THE BIRMINGHAM ECCENTRIC PRINTING DEPARTMENT



The exciting Ford Fairlane 500 Club Victoria (above)—over 17 feet long—is one of two new, bigger Ford sizes this year.

If you think it looks new...
wait till you drive it!



... For there's where Ford's newness really pays off
... in melting mountains . . . in smoothing the bumps
... in straightening the curves

You can see that Ford's longer, lower Sculptured Look makes other cars look downright old-fashioned. But the part you can't see—the new "Inner Ford"—is what shows its stuff when you drive a Ford. It's completely revolutionary from the wheels up! And it feels it.

Ford's remarkable new, wider frame lets you sit sweet and low. It lets Ford hug the roads because of its lower center of gravity. And Ford's new front suspension, rear springs and new easy handling are part of the scheme to make you think every road is cloud-smooth.

The magic touch of the new Ford power plants makes mountains disappear. What looks like uphill feels like downhill. You get this surging power in a wide choice of new Silver Anniversary V-8 engines. Or you can choose Ford's new, more economical Mileage Maker Six, the most powerful Six ever offered in the low-price field.

There's magic in Ford's price tag, too! You won't believe this big new Ford is still priced Ford-low. But it is. Come in and test the magic of the new kind of Ford. It's a real "Wizard of Ah-h-h-h's!"

Action Test the New Kind of **FORD**

HAROLD TURNER Inc.

Turn to Turner—Your Friendly Ford Dealer

Phones Midwest 4-7500 or JOrdan 4-8286

464 So. Woodward Ave.