

# BUSINESS BRIEFS

Two exquisite patterns

by **STANGL**



**Magnolia**

**Carnival**

Magnolia's graceful coupe shape and striking design make an unusually decorative table setting. Permanent colors under the glaze. 16-piece starter set and open stock.

A star-sprinkled design full of the joy of living—in the graceful coupe shape. Its Mardi Gras colors are permanently protected against fading or washing off. 16-piece starter set and open stock.

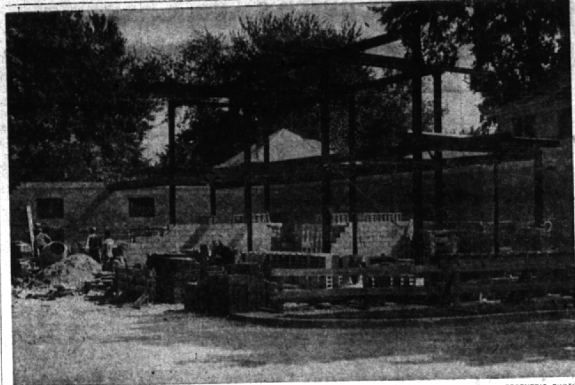
16 PIECE STARTER SET

4 Plates, 4 Bread and Butters, 4 Cups and Saucers

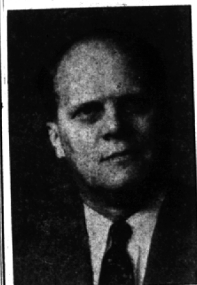
\$14.95

**PONTIAC POTTERY**

2099 S. Telegraph Phone FE 2-8642  
2 Miles North of Devon Gables on Telegraph 1/2 Mile North of Sq. Lake Rd.  
Open Daily and Sunday 10-3



**STEEL FRAMEWORK** goes up on the new office building which is under construction at 292 Brown, Birmingham. The main floor of the building will contain the new, enlarged beauty salon of Leons, well known Birmingham beauty specialists. The second story will have seven offices designed for clients. Architectural style of the structure will be Williamsburg colonial.



JOHN A. LOHLA

### Detroit Edison Promotes Two Locals

Promotions for two Detroit Edison men—employees of the Oakland overhead lines division in Pontiac were announced today by W. W. Williams, manager of operations for the company. The men are Donald G. Emerson of 1576 Shipman, Birmingham, and John A. Lohla, 1092 Brooklawn court, Troy township. Emerson, superintendent of the division since 1949, has been promoted to assistant general superintendent of the overhead lines department with headquarters in Detroit. A native of Lima, Ohio, Emerson is a graduate of Coyle electrical school in Chicago. Before joining Edison as a lineman in 1929, he was city electrician for Celina, Ohio.



DONALD G. EMERSON

### P. M. Corp Elected Company President

The board of directors of AllianceWare Inc., Corp., Lone Pine, Bloomfield Hills, will devote his entire efforts to that operation, while still retaining his position as vice president and director of the parent American Metal Products Company of Detroit. Corp is 45 years of age, and has served AMP in many capacities.

### First Issue Of Ford Tractor Newspaper Out

The first issue of an employee's newspaper came out this week for the Tractor and Implement Division of the Ford Motor Company last week. The monthly slick page paper is circulated to the firm's personnel at the various plants throughout the country. The Ford and Tractor News will feature information about the accomplishments of the division and company, as well as stories about the outside activities of the employees.

STORIES and features are illustrated with photographs and illustrations. Area reporters have been appointed to cover the different sections and locations of the organization and accept news items. Some of the subjects included in the first issue are plant news, some kinds of worker recreation, features for the women and a sports page. The preface to the first edition states the policy of the paper with the following paragraphs: This newspaper will carry the story of the company's advancement in many fields. This news item will relate and interpret company policies, plans and events for division employees. Editor of the new organization paper is Robert B. Pollock.

### C & O Promotes T. Burris to Chief

The Chesapeake and Ohio Railway today announced the appointment of T. C. Burris, 1461 Pilgrim, Birmingham, as chief engineer with headquarters at Huntington, West Virginia. Burris is a 29-year veteran of C&O, having started as an instrumentman at Saginaw, Michigan, on the Pere Marquette Railway. In 1929 he was transferred as assistant engineer to Grand Rapids, and served there as division engineer from 1942 to 1951, at which time he was named chief engineer of C & O's Northern region, at Richmond, Virginia, where he served until his recent promotion to chief engineer of the entire C&O system. Last year Michigan State University presented him with its Centennial Award "In recognition of distinguished services which have contributed to the benefit of mankind." This award was bestowed on only eight of Michigan State's graduate engineers.

### Dr. Wyatt Attends

Dr. Joseph H. Wyatt, 1447 Dorchester, Birmingham, Michigan attended the 41st annual assembly of the Osteopathic College of Ophthalmology and Otorhinolaryngology.

# the magnificent Magnavox

high-fidelity television • radio-phonographs

**McCallum and Dean**

409-411 E. Maple

Midwest 4-5230

## BIRMINGHAM A High Priced Town? NOT AT ALL!

It's True that Birmingham boasts many high quality stores. But then, why not? There are times when all of us, regardless of our wage bracket, want to purchase something a little deluxe. Isn't it convenient to have many stores handling top quality merchandise? Shopping is simpler.

But wait a minute. We said Birmingham WASN'T a high priced town and we mean it. In Birmingham you'll find not only the very high quality stores we spoke of but also dozens of shops handling Standard Brands and at Standard Prices.

You'll Enjoy shopping in Birmingham where such a wide range of products await your selection. Wherever you choose to shop, whether it be the most exclusive store in town or a store handling the least expensive merchandise, you'll find the same courteous, personal service that makes Birmingham a wonderful place to shop.

**B**UILD A BETTER BIRMINGHAM . . . BUY IN BIRMINGHAM

**BIRMINGHAM CHAMBER OF COMMERCE**

FOR THE FINEST IMPORTED AUTOMOBILES Visit FALVEY SALES AND SERVICE 22500 Woodward Ave. Ferlie Phone Lincoln 3-5000

IT'S NEW! AT MILL'S PHARMACY

We Are Now Carrying the Entire Chanel Line CHANEL N°5

FOR THE PURSE



PERFUME AT YOUR FINGERTIPS WITH THE MOST TREASURED NAME IN PERFUME

**CHANEL MILLS PHARMACY**

1740 W. Maple at Chestorfield MI 4-5060

3 FREE DELIVERIES DAILY 11:30 AM 2:00 PM 4:00 PM Emergency Deliveries Taken Care of Immediately

Too good to pass up!

Ridley's Get-Acquainted

# SPECIAL

Limited time!



BUSINESS

# SHIRTS

Beautifully laundered— "Whiter than White"

PLASTIC WRAPPED

# 19c

with any cleaning order!

"Cash & Carry"—or "Called For & Delivered"



Dial "O" for operator and ask for Enterprise 6655 . . . no toll charge. Or see phone book for Ridley "Cash and Carry" store nearest you.

**Name L. T. Hagopian Plymouth Ad Head**  
The appointment of Louis T. Hagopian, 822 Henrietta, Birmingham, as director of advertising and sales promotion was announced today by Jack W. Minor, vice president in charge of sales, Plymouth division, Chrysler Corporation. Hagopian joins Plymouth after having served as Eastern new car sales manager for the Dodge divi-

Create a "magazine picture" bedroom with a **CONTINENTAL BED**

Custom Made Headboards, Frames  
Choose from Wood, Plastic, Canvas, Wrought Iron, Brass or covered in your own fabric to match bedspread or draperies.

Complete Line of Bedding  
• Stearns & Foster  
• Spring Air • Kroyton by U.S. Rubber  
Special Sizes by Special Order

We Give Holden Red Stamps

**R. C. CARPENTER**  
CUSTOM HOLLYWOOD BEDS

28879 GREENFIELD (Near 12-Mile) LI 4-9133  
Open Daily 9:00 to 6:00—Thursday, Friday 9 A.M. to 9 P.M.

# 1/2 OFF!

**FAILLE BED SPREADS**  
Five different styles in colors: Raspberry, green, cocoa, yellow, and gray.  
NOW \$7.25 to \$8.75

**CHROMSPUN SPREADS**  
Coverlets and one-piece spreads in solid colors: Yellow, pink, green, blue, eggshell.  
NOW \$6.00 to \$8.75

**ODDS and ENDS IN SPREADS**  
In chintzes, taffetas and summer spreads.  
NOW \$4.00 to \$12.00

**READY MADE DRAPES**  
Woven texture with lures in solid colors—green, cocoa, gold, pink — One pair for single windows—more pairs for wide windows.  
NOW \$6.25 PAIR

**ORGANDY TIER CURTAINS**  
Four different styles for bedroom or kitchen in sizes 30" and 36".  
NOW \$1.75 to \$3.25 PAIR

**CAFE CURTAINS**  
In voile, bemberg, and cotton plaid. Sizes 30 and 36 inch.  
NOW \$2.00 to \$3.50 PAIR

**NYLON RUFFLED CURTAINS**  
In pastel colors — pink, green, gold. Lengths 81 and 90 inch.  
NOW \$4.50 to \$5.00 PAIR

Shop in Air-Conditioned Comfort!

FE-4-0516 **Molls**  
FLOOR COVERINGS DRAPERIES BEDSPREADS

1666 SOUTH TELEGRAPH South of Orchard