

# At Press Time

## SOUTHFIELD

APPLICATIONS are being accepted for replacement of township Trustee Henry M. DeMeier who resigned two weeks ago. Old applications on file will be reviewed and brought up to date.

MRS. FANNIE ADAMS, township clerk, and Constable Wesley Skowron have been instructed by the board to work together on providing proper markings—1 x 5 signs—for voting precincts as one means of cutting down traffic congestion. Using police on traffic was also advised.

TRUSTEE Don L. Swanson moved to lift the ban on house building in the Cambridge-Canterbury Gardens area of eastern Southfield, at least until a committee can investigate sewage problems in the township and come up with a recommendation by Oct. 15, and the board upheld his motion as well as one by Luther Warner, requiring Supervisor Eugene Swoon and Building Inspector Frank Guley to look into use of bench markers to set grade on the building sites before building begins.

LEONARD LAMB, water superintendent, told the board Tuesday night the Water Authority wants to charge Southfield \$114 for 144 lines connecting directly to Detroit. Before the authority comes into existence, the same amount of water would have cost the township \$1,078, with little or

no benefits provided by the new authority. Lamb was instructed to talk prices with Donald Egbert, authority manager, to bring about a price adjustment.

FINAL APPROVAL of Sherwood Village plat in Section 24, was tabled by the board to give Southfield Land Planner James H. Hickey a chance to review the plat which was submitted on Monday the Friday-before-the-meeting ruling made at a recent meeting. The subdivision is a 253-lot development by Practical Homes of Detroit.

## Southfield BPW Holds Membership Meeting Next Week

SOUTHFIELD Business and Professional Women's club will hold a membership meeting at Community Church Congregational in Lathrup Sect. 5. Each member has been asked to bring a guest. Helen McNamara, past chairman of district one will be guest speaker, and will launch the club's membership drive. Dinner reservations must be made with Audrey Cameron at EL 6-4074 for tomorrow night.

Newest members of the Southfield Business and Professional Women's club are Victoria Stora of West 10 Mile road; Eula Funk of Tamarack Circle and Isabel McLean of Bouquet drive.

PRESIDENT Mrs. Don Cameron has named committee chairmen for the coming year. Edna Milford is membership chairman; Gertrude Luce, program; Estha Palmer, education and vocation; Bernice Reid, health and safety; Margaret Cantorcel, international relations; Vera Rehbine, public affairs; Edna Kaupp, legislation; Lee Blacklaw, news services; Florence Grimes and Audrey Cameron, finance; Florence Paulson, national security. Julia Walton, parliamentarian; Edna Fair, bulletin; Edna Palmer, club roster; Florence Johnson, reservations; and flower fund, Florence Paulson.



MRS. LINN W. HOBBS, 27665 East California, Lathrup, holds two monarch butterflies she is about to tag and release for the Royal Ontario Museum. Mrs. Hobbs is working on a special project to trace migrations of the monarch's. Shown in the picture are three phases of the monarch's development. Caterpillars hatch and grow on the milkweed in the foreground, prepare silk in the screened cage, and form beautiful green and gold chrysalids on the easel in the background. Any person finding a tagged orange and black monarch is requested to notify the Museum. Only three of the 200 Mrs. Hobbs has tagged this summer, have been reported.

## Gilbert Lake Estates Administer Lake Property

GILBERT LAKE — Formed mainly as a social group and to administer the affairs of the subdivision's lake property, the Gilbert Lake Estates association came into existence in May of 1952. Forty families now live in Gilbert Lake estates, with a 13 acre area on the lake set aside for residents' use. Families who buy one of the beautiful custom homes in the lake area automatically become a member of the association, with lake privileges. Typical example of the type of service the association performs is their maintenance of this lake area. Their latest project of the year is the putting of calcium on subdivision roads, according to Harry Aten, secretary-treasurer of the group.

THE ASSOCIATION is governed by a board elected at their annual meeting. Present officers of the board are: President, Edward J. Hollenbeck, 6911 Snowchase Circle; vice president, Dale O. Miller, 6915 Snowchase Circle, and secretary-treasurer, Harry Aten, 3605's Quarton road.

Residents of the subdivision pay dues of five dollars a year, Aten said, plus any special assessment the group may approve at its annual business meeting. The annual business meeting usually ends as one of the subdivision's social events of the year. Another event sponsored by the association is the annual Halloween party for the children in the area.

## James H. Barrett, Bingham Farms Treasurer Resigns

BINGHAM FARMS — James H. Barrett, treasurer of Bingham Farms, resigned his post this week and in a letter to Bingham Farms council asked his resignation become effective Sept. 30. At the Bingham Farms council meeting Monday night, council tabled action on the resignation until Sept. 30 by which time a successor may be named. Barrett's reason for resigning was pressure of business.

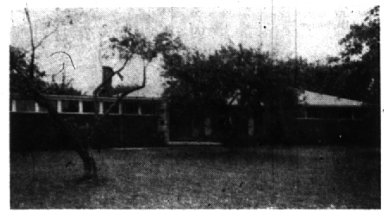
Barrett was appointed Bingham Farms representative to the Inter-County road commission. The group, composed of representatives of nearby municipalities and counties, was formed to discuss proposed plans of future highways. In a discussion of the vacating of Timber Trail road, King expressed confidence that a compromise can be worked out between the Village of Bingham Farms, abutting property owners and sub-dividers.

The village, King stated, is only interested in eliminating unneeded roads and keeping down road maintenance cost.

## We Heard It Said By:

WILLIAM KING, president of Bingham Farms: "Our roads are in worse shape than any in the county. Have you driven over 14 Mile road recently? It's a disgrace."

## IN THE WOODS



Set on a beautifully landscaped wooded lot 160 by 229, this large ranch home has EVERYTHING. 3 large bedrooms, 1 1/2 tile baths, mahogany paneled recreation room with bar, flagstone entrance hall, built-in oven and range, large breakfast nook overlooking woods, formal dining room. Carpeting and drapes are included. Quality construction. \$32,900

There is no substitute for

- COURTESY
- PROMPT ATTENTION
- PERSONAL SERVICE
- FAST ACTION

from beginning to end!

When you want ACTION . . . LIST your property with

# CHAMBERLAIN

REALTY COMPANY

420 S. WOODWARD BIRMINGHAM, MICH.

MI 6-4500 JO 6-1527

**THE BUILDING DOCTOR**  
 No JOB TOO SMALL  
 Carpenter — Electrician — Painter  
 and Cement  
 WE GUARANTEE TO PLEASE  
 LL 7-9155

---

**A. L. Doenges Co.**  
 Residential Builders  
 COMPLETE SERVICE  
 DESIGN TO OCCUPANCY  
 Midwest 6-1600 — 4080 W. Maple  
 Birmingham

# Travel!

It Will Give You A Wonderful Lift

AND WHEN YOU TRAVEL THINK OF US

You'll find us your most dependable guide and counselor in your quest for information on near and far away places. You'll appreciate the courteous efficient service of our experienced staff, and of course there is no charge for our services.

Your Dealer in Dreams

**BIRMINGHAM TRAVEL SERVICE**  
 379 Hamilton Grace P. Reilly MI 4-5711



SECOND LT. Ralston W. Schultz, son of Mr. and Mrs. Stewart Schultz, Walnut Lake road, reported for extended active duty with the U.S. Air Force. He has been assigned to the research and targets systems division of headquarters air research and development command, Baltimore, Md. Lt. Schultz was commissioned in the Air Force Reserve through the University of Michigan's AFROTC program last March.

# THIS DOOR OPENS TO EXCITING INTERIORS

Wondrously Contemporary

Nearly an acre . . . near Oakland Hills  
 Smart design . . . rich paneling . . . exciting interiors  
 Library . . . plus Activities Room  
 3 twin Bedrooms . . . 2 complete Baths  
 Lower garden level area . . . sliding glass doors to garden  
 \*Timbered ceilings . . . clever built-ins

You'll agree it's enchanting!

# COUNTRY CHARM

JUST OUTSIDE BIRMINGHAM

**SMART AND SPARKLING**

Low taxes . . . with paved streets and sewers  
 Occupied one year . . . all the extras done  
 3 fine Bedrooms . . . Bath . . . extra Lavatory  
 Laundry off Kitchen . . . full basement for play  
 Top neighborhood . . . near the new School  
 Smart interiors . . . built-ins . . . beamed ceiling

really good value at \$34,500

Nearly everyone comes back again to

BIRMINGHAM'S SENIOR REALTORS

# MAX BROOCK INC.

Realtor Specialists for 61 Years

300 S. Woodward Ave. MI 4-6700

Birmingham, Mich. JO 4-6700

Residential Farms Leases & Management Commercial Acreage

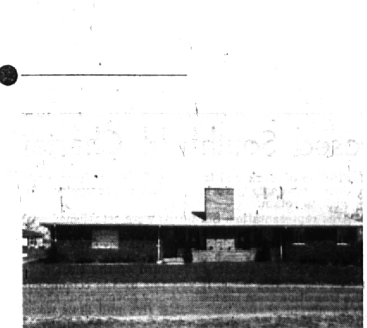


**SEE THIS**

Constructed by a Builder for his daughter. 3 bedroom Brick Ranch on 110 x 200 ft. lot in Bloomfield Twp. 1 1/2 baths, 2 car attached garage and full basement with recreation room. Carpeting and drapes included. A real value.

## LATHRUP VILLAGE

Center Hall Colonial. Two spacious bedrooms, recreation room with natural fireplace; extra large screened porch. Excellent landscaping. Very desirable location. \$23,500.00.



**JOHNSTONE & JOHNSTONE, INC.**  
 351 N. WOODWARD  
 MI 7-0100 JO 6-0795