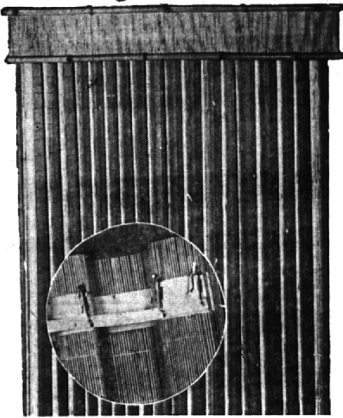


**RATTAN FURNITURE**  
**BAMBOO**  
**DRAPERY**  
**CORNICES - SHADES**  
 \$5.00 Up Per Panel



- ★ Extra Heavy Webbing
- ★ Hemmed Edges
- ★ Spacing Tape
- ★ Extra Heavy Hooks

**Rattan & Wrought Iron Furniture**  
 by Molla, Ficks Reed, Adornal, Miller, Meadowcraft, Vogue

Our Counselors Will Call With Materials, Advice and Samples, Day or Night.

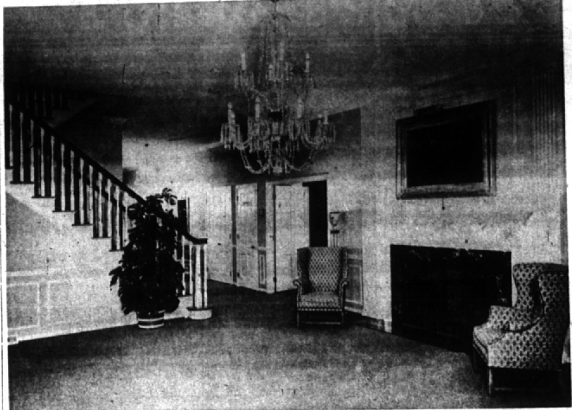
**Columbia**  
 PORCH SHADES LATTISHADES Woven Wood

Tropic Shop

LINCOLN 6-3311 LINCOLN 3-4656

**Quimm's inc.**  
 Open Thursday, Friday Evenings  
 2875 N. WOODWARD — 3 Blocks South of 12-Mile

**BUSINESS BRIEFS**



**THE STATELY** Georgian colonial Wm. Vasu Funeral Home recently opened at 4375 North Woodward. The building is handsomely furnished in reproductions of Williamsburg furniture. Setting off the large foyer is an Italian marble fireplace with a mantel of English Adam design. Over this room hangs a late Georgian crystal chandelier.



**Wm. V. Vasu Funeral Home Opens in Area**

A large three story, gray and white Williamsburg colonial building on North Woodward is the new location of the William V. Vasu Funeral Home. All three floors of the 30 ft. by 80 ft. structure are dedicated to the funeral business. Interior furnishings and decorations are in a Williamsburg style with a quiet and sedate atmosphere maintained throughout. The functional design of the building allows for 12 services to be accommodated at the same time. But for larger funerals, the Vasu home offers three main chapels: Georgian, Monticello and the Williamsburg.

ALL ROOMS have air conditioning and acoustical walls that offer maximum sound proofing. Another feature is the Hammond organ which can play music to the various rooms. Of particular note is the availability of elevator service to all three floors. The funeral home also maintains a large display room with a wide selection of caskets. Two large parking lots to the side of the building can accommodate approximately 100 cars. Vasu also offers their own limousine service.

WILLIAM V. VASU, president, stated "in the time of need, the home is able to offer all facilities to take care of the family and friends. Our staff is acquainted with the procedures of all denominations. He added, "we have affiliations with the leading funeral establishments in the world, to assist where distances become a problem." The William V. Vasu Funeral Home has been established since 1922, occupying locations in Highland Park and Detroit. Their new building at 4375 North Woodward between 13 and 14 Mile roads will accommodate families in the Detroit metropolitan area.



WILLIAM V. VASU



EDWARD J. LYNCH, JR.

**Mobil Oil Station Building in B'ham**

Construction is now under way at the corner of Woodward and Hunter by the Socony Mobil Oil company which is adding another service station to their chain. The large triangular tract faces on three streets: 300 ft. on Hunter, 400 ft. on Woodward and 168 ft. on Oak. Oak street is being cut through from Woodward to Hunter to relieve congestion at the Woodward and Hunter intersection.

THE STATION will be of modern design with porcelain exterior with two bay service. Two hoists and two restrooms will be included in the building. A 30 ft. by 40 ft. classroom will be an additional part of the station which will serve as the company's Pontiac district training school. Three pump islands with remote pumping system will also be a part of the service.

Selling your home? Advertise it in the "For Sale-Houses" columns of The Eccentric.

**Ryckman Elected Sahlin Co. Secretary**

The election of John H. Ryckman, 16096 Dunblaine, Southfield township, as secretary and treasurer of Sahlin Engineering Co. Inc., Birmingham, Mich., was announced by Richard T. Sahlin, president. Previously, Ryckman was associated with Harry Ferguson Inc., Detroit, as chief accountant from 1949 to 1954, and with Touche Niven & Co., as a certified public accountant.

He received his BA in business administration from Michigan State university in 1938, and his MBA in business administration from the University of Michigan in 1941. He is also a certified public accountant in the State of Michigan. Ryckman joined Sahlin Engineering company in 1954 as chief accountant.

**Krieg Appointed Ford Styling Head**

Appointment of Lowell E. Krieg, 29079 Wildbrook, as styling operations manager of Ford Motor Company's styling office was announced today by George W. Walker, vice president and director of styling. Krieg was formerly assistant general manager of Continental division.

A native of Marion, Ind., Krieg was graduated from Northwestern high school, Detroit, in 1934 and from the University of Michigan with a bachelor of arts degree in 1937 and a master of business administration degree in 1938.

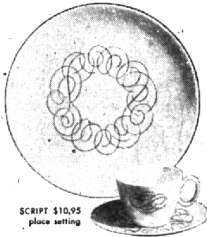
HE JOINED Ford as an administrative analyst for finance staff in November, 1946, and subsequently held positions with Ford division as manager of the organization department, administrative manager for manufacturing operations, executive assistant, Highland Park, and manager of organization and systems.

Krieg became assistant general manager of Continental division in March, 1956, after serving as assistant to the general manager,



LOWELL E. KRIEG

Lincoln division, and operations manager and acting manufacturing manager, Continental division.



SCRIPT \$10.95 place setting



SILHOUETTE \$9.95 place setting

**CONTINENTAL CHINA . . . by Rosenthal**

CONTINENTAL . . . the spirit of contemporary living carried out in fine china . . . traditional beauty with versatility to meet the needs of gracious living in the home today . . . no matter what the period . . . no matter what the occasion. Created by world renowned RAYMOND LOEWY.

**PONTIAC POTTERY**

2099 S. Telegraph

Phone FE 2-8642

2 Miles North of Devon Gables on Telegraph 1/2 Mile North of Sq. Lake Rd. Open Daily and Sunday 10-5

**METALLURGIST**

Young man with degree and practical experience wanted by nationally-known source of automotive parts. State qualifications and salary requirements as well as personal information in letter.

Eccentric Box 164

**Attention—Packard Engineers!**

Medium-sized automotive parts manufacturer has opening for a

**RESEARCH ENGINEER**

Practical experience required in addition to theoretical background. University degree essential. Salary open. Write us full personal and professional details for interview.

Eccentric Box 164

**We Want An Experienced**

**ENGINE DESIGN AUTOMOTIVE ENGINEER**

Should have proved record of ability with sound practical background. Excellent opportunity with automotive parts manufacturer. Degree necessary. Open salary. State qualifications and personal data in letter requesting interview.

Eccentric Box 164

**ONE MORE WEEK of this big August SPECIAL**



Any upholstered

**CHAIR**

cleaned in your home

**\$4.95**

**CARPETS**

Cleaned in your home

Ridley's bonded experts do beautiful cleaning right in your home, without fuss or muss. Prompt estimate gladly furnished.

Dial "O" for operator and Ask for Enterprise 6655

No Toll Charge

**August Sale Priced**  
 SCIENTIFICALLY DESIGNED FOR LUXURIOUS SLEEPING COMFORT



Custom Built for our 20TH ANNIVERSARY SALE to be sold for \$39.50 NOW ONLY \$29.50 Innerspring mattress has true temper firm coil unit with matching box spring.

LAY-A-WAY IF NECESSARY TILL YOU NEED THEM

**IT'S A FACT!** We have received the first notice of a price increase in innerspring mattresses and box springs due to steel prices. This nationally known product has been INCREASED \$10.00 PER UNIT.

**BUY A BARGAIN WHILE IT LASTS!**



4 BLOCKS N. OF 14 MI. RD. . . . . Midwest 4-1410  
 • OPEN THURSDAY, FRIDAY, SATURDAY TILL 9 •