

Community Church Organizations To Hold Meetings

Two Community Congregational church groups have meetings scheduled next week, with the women's association's important annual meet slated.

The Women's association will meet in Fellowship hall on Wednesday, April 11.

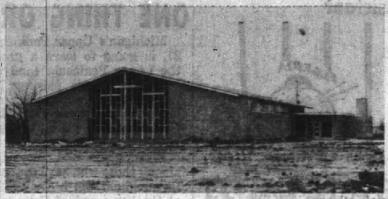
Men's association will be done in the forenoon, starting at 10:30. Lunch will be served by circle I at 11:30, and the meeting will follow.

New circles will be established

Retreat to be Held

Saturday, April 7, Rev. Fr. Norbert Odegeering, O.F.M. will conduct a Day of Recollection for men, sponsored by the St. Elizabeth Chapter of the Third Order of St. Francis, at Duns Scotus college, W. Nine Mile and Evergreen. The one-day retreat will start at 8 p.m.

For the coming year, the Bible study group will meet at 8 p.m., Monday in the church parlor. Rev. John D. Rose will lead a study of the Gospel of Mark, Chapter 14 through 16.



ADDED INCENTIVE for joy among St. Bede's parishioners Easter morning comes from celebration of first masses in this new church, located on 12 Mile road at Southfield. Parish was established by Edward Cardinal Mooney, Archbishop of Detroit, in June, 1954, with Rev. Cyril J. Keating appointed pastor.

New St. Bede Church Celebrates First Mass

Weather, drain tile, and 25,000 yards of slag were important factors last week in the opening of new St. Bede church.

Rev. C. J. Keating, pastor of the new church, watched closely as workmen hurried during the three days preceding Easter to convert a sea of mud into a parking lot. The task was completed, and Easter saw first masses celebrated.

With the exception of the parking lot, work has been completed on the church building for several weeks. Seating capacity, at present 300, may be increased to 700 in the future.

SOPELY TINTED windows will filter light on to the altar, carpeted in green and gold. Two large crosses are built into the windows on each side of the altar.

Standing in front of the church an outside cross shines through, backing the center of the altar. Great laminated beams of natural wood span the width of the nave, creating a feeling of space and airiness.

Originally planned to cost \$100,000, the size of the building was later increased to accommodate an expected increase in population, at a cost of \$300,000.

THE CONGREGATION has been meeting at Lathrup school auditorium.

Sunday masses in the new church will be held at 8, 9:30, 11 and 12 a.m. Weekday masses, with the exception of April 2, 3, and 4 will be held at 7 a.m.

Formal dedication of the building and property is scheduled in the near future. His Eminence, Edward Cardinal Mooney Archbishop of Detroit, will officiate.

Embury Methodist WSCS To Sponsor Smorgasbord Dinner

Smorgasbord will be on the menu for the dinner planned Thursday, April 12 by the Women's Society of Christian Service at Embury Methodist church, from 5:30 to 7:30 p.m.

Mrs. John Hutton, 720 S. Eton, is in charge of tickets.

WSCS will meet at the church hall Tuesday, April 10, at 8 p.m., with Mrs. Lee Weldon in charge of the program. Mrs. Robert White will give devotions.

Meeting hostesses are Mrs. Fred McCullough, Mrs. Foster Raymond, and Mrs. James Black.

Rummage Sale Set Next Week

The Woman's Auxiliary of St. James Episcopal church will hold their annual spring rummage sale Thursday, April 12, and Friday, April 13, at the church.

Thursday hours will be from 9 a.m. to 5 p.m., with Friday hours set from 9 a.m. to Noon.

Mrs. Kenneth Sproule, ways and means chairman, and her committee have planned to use live models throughout the day.

A separate room will have children's clothing and toys on display.

Large mirrors and chairs will be at the disposal of hat buyers in another room.

Lathrup Church Youth To Host Out-of-Town Group

Community Congregational church will be host to 25 senior high school youth of the United Congregational church of Addison, Mich., Saturday and Sunday.

Mrs. Lester Amstinger, director of youth for Community church, has announced the theme of programs will be "Brotherhood."

Detroit Round Table of Jews, Protestants and Catholics are sending speakers to speak before the youth groups of both churches.

The Rev. Robert H. Secomb, pastor of the Addison church, will preach at both services on Sunday, April 18.

Local young people will entertain the Addison youth in their homes Saturday evening.

Fr. Felix to Speak At Monday Meet Of Altar Society

Election of officers will be held at Monday's meeting of Holy Name church Altar society, at 1 p.m. in St. Anne's hall.

Father Felix, of the Maryknoll Missionary, will speak on "You As A Missionary" and present a film on missionary work.

Mrs. Coyle Fisher, program loving chairman, will introduce him. Members of St. Davidica's guild will be hostesses at the tea following.

McINERNEY'S FARM AND CIDER MILL

29501 Northwestern Hwy., between 12 & 13 Mile



STILL MAKING FRESH CIDER AND HOT DONUTS, DAILY!

NEW! ... at McInerney's "BROASTED" CHICKEN

Phone: ELGIN 6-3700

Golden brown chicken cooked through to the bone... in 6 minutes! A flavor out of this world! Strictly fresh, raw chicken - no batter, no pre-cooking!

Carry-Out Special \$1.35

3 big pieces of chicken, roll and butter, fresh fruit salad, French fries.

Jumbo Shrimp Dinner. \$1.35

One whole chicken, cut up & broasted, \$2.10

HERE'S GOOD NEWS! We can rent an R-S Water Softener at a cost that's so low we'll be money ahead when our savings on soap and other things are considered

THAT'S RIGHT! And when we're ready to buy a new R-S Ball-O-Matic we'll get credit for a generous portion of the rent we've paid. IT'S THE BEST DEAL WE CAN GET!



R-S Ball-O-Matic WATER SOFTENER

THE REYNOLDS RENTAL PLAN is Sensational

You rent an R-S Ball-O-Matic for only \$3.25 per month. It's yours to use - as often as you want. It's equipped with Dupont Manganese Dioxide. Then, when you're ready to buy a water softener, you receive credit for the rent we've paid on a new Ball-O-Matic. Or you can keep the rental unit, if you wish.

YOU CAN'T AFFORD TO BE WITHOUT SOFT WATER

BALL-O-MATIC water softeners have been manufactured in Detroit since 1931. There are probably more of them installed in this area than of all other makes combined. You are sure with a REYNOLDS quality softener. Factory installation and factory service.

"You Can't Beat the Best"

Call collect, WE 3-3800, for free water analysis and full information.

Reynolds Water Conditioning Co.

(Formerly Reynolds-Shaffer Co.)

12100 Cloverdale Avenue

Detroit 4, Michigan

ENGINEERED TO FIT YOUR NEEDS

"BRING UP THE RESERVES!"

There are times in life's battle when reserve strength decides the issue. And, any time, the fact that you've got such backing gives you winning confidence.

How are your savings reserves? Build them up while "all's quiet at the front." Open a savings account with us soon and deposit something each payday!

THERE'S NOTHING QUITE LIKE MONEY IN THE BANK

PROTECT YOUR VALUED POSSESSIONS

... from destruction, loss or theft by placing them in a SAFE DEPOSIT BOX

Now Available at our SOUTH WOODWARD OFFICE

THE BIRMINGHAM NATIONAL BANK

BIRMINGHAM, MICHIGAN

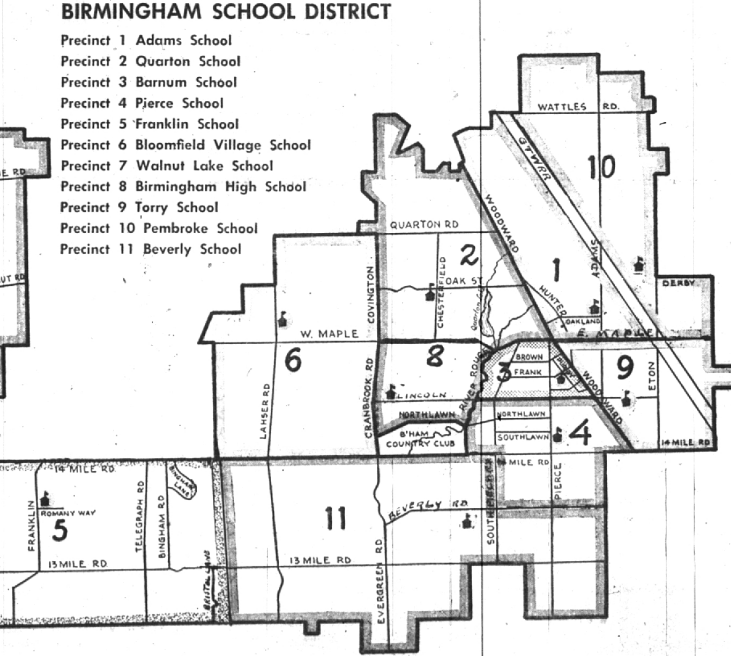
Member Federal Reserve System

Member Federal Deposit Insurance Corporation

188 N. Woodward at Hamilton 1954 S. Woodward near 14 Mile Rd.

TO THE QUALIFIED ELECTORS OF THE SCHOOL DISTRICT OF THE CITY OF BIRMINGHAM OAKLAND COUNTY, MICHIGAN

The following voting precincts have been established for all school elections to be held in the School District of the City of Birmingham.



- Precinct No. 1** - The area bounded on the north by the district limits, on the east by the G.T.W.R.R., on the south by East Maple Avenue and on the west by Woodward Avenue. Registered voters residing within these boundaries will vote at the Adams School for all school elections.
- Precinct No. 2** - The area bounded on the north by the district limits, on the east by Woodward Avenue, on the south by Covington Road and on the west by Woodward Avenue. Registered voters residing within these boundaries will vote at the Quarton School for all school elections.
- Precinct No. 3** - The area bounded on the north by West Maple Avenue, on the east by Woodward Avenue, on the south by River Rouge and on the west by the River Rouge. Registered voters residing within these boundaries will vote at the Barnum School for all school elections.
- Precinct No. 4** - The area bounded on the north by Lincoln Avenue, on the east by Woodward Avenue, on the south by 14 Mile Road and on the west by the River Rouge, together with the area bounded on the north by 14 Mile Road, on the east by Greenfield Road, on the south by Beverly Road and on the west by Southfield Road. Registered voters residing within these boundaries will vote at the Pierce School for all school elections.
- Precinct No. 5** - The area included in the former Franklin School District, being that part of the Birmingham School District bounded on the north by 14 Mile Road, on the east by the district limits, on the west by Insler Road. Registered voters residing within these boundaries will vote at the Franklin Village School for all school elections.
- Precinct No. 6** - The area bounded on the north by Quarton Road, on the east by Covington Road and Cranbrook Road, on the south by 14 Mile Road and on the west by the district limits. Registered voters residing within these boundaries will vote at the Bloomfield Village School for all school elections.
- Precinct No. 7** - The area included in the former Walnut Lake School District, being that part of the Birmingham School District bounded on the north by the district limits, on the east by the district limits, on the south by 14 Mile Road and on the west by Middlebelt Road. Registered voters residing within these boundaries will vote at the Walnut Lake School for all school elections.
- Precinct No. 8** - The area bounded on the north by West Maple Avenue, on the east by the River Rouge, on the south by the Birmingham Golf Club and on the west by Cranbrook Road. Registered voters residing within these boundaries will vote at the Birmingham High School for all school elections.
- Precinct No. 9** - The area bounded on the north by East Maple Avenue, on the east by the district limits, on the south by 14 Mile Road and on the west by Woodward Avenue. Registered voters residing within these boundaries will vote at the Torrey School for all school elections.
- Precinct No. 10** - The area bounded on the north by the district limits, on the east by the district limits, on the south by East Maple Avenue and on the west by the G.T.W.R.R. Registered voters residing within these boundaries will vote at the Pembroke School for all school elections.
- Precinct No. 11** - The area bounded on the north by 14 Mile Road, on the east by Southfield Road, on the south by the district limits and on the west by the Franklin district limits, together with the area bounded on the north by Beverly Road, on the east by Greenfield Road, on the south by the district limits and on the west by Southfield Road. Registered voters residing within these boundaries will vote at the Beverly School for all school elections.

Precincts No. 10 and No. 11 have been newly established to provide greater convenience for registered voters living within those areas.