



CARL CHRISTIAN, 25, will become the principal of the Our Shepherd Lutheran church parochial school when the school opens in September. A graduate of Concordia Teachers College, River Forest, Ill., Christian has been principal-teacher at Grace Lutheran church school, New Albany, Ind., for the past two years. Christian will visit Our Shepherd early in April to survey the needs of Birmingham's first Lutheran parochial school.

Week-Night Square Dances Scheduled By Kiwanis Club

To give square dancing enthusiasts an opportunity to do-so-do on a week night, Birmingham Kiwanis are inaugurating a series of monthly square dances, the first set for Tuesday night at the Community House.

From 7:30 to 8 p.m. caller Joe Fresh will drill beginners on steps. Dancing begins at 8, until 10:30 p.m.

Musical background for Joe Fresh's calling will be provided by Otto Brown's three-piece combination.

BABY SITTERS will care for small children in the Girl Scout room upstairs.

Chairman for the dances is Richard Gibson, 927 Ann, who is Kiwanis vice president.

Club President Gilbert V. Schrock, 1748 Webster, said dance proceeds will go to club-sponsored activities.

Expert to Discuss Water Problems Of S.E. Michigan

CRANBROOK—One of Oakland county's most basic problems will be discussed tomorrow at 8:15 p.m. when Cranbrook Institute of Science presents Dr. Andrew Mozola in a talk on "Water resources and water problems of southeastern Michigan."

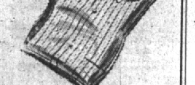
The talk will be held in Cranbrook school auditorium.

Dr. Mozola, assistant professor of geology at Wayne university, wrote his doctor's thesis on the water problems of Oakland County.

HIS PUBLISHED studies in water and waste disposal problems are the most recent and complete for the Oakland county area. In this connection, he has cooperated with the Detroit metropolitan area regional plan commission.

Since problems of water and waste disposal are of vital concern, the meeting has been thrown open to the public without charge. Dr. Mozola presents his subject on a non-technical level.

THE STRIPES HAVE "IT" FOR SPRING!



"JAY-GAIL" STRIPED BROADCLOTH SHIRTS

- button-down collar
- barrel cuff
- blue 'n' white
- brown 'n' white
- grey 'n' white

\$3.95

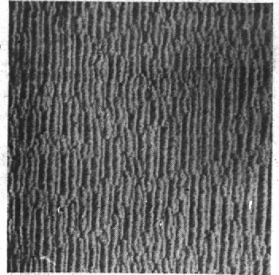
MI 4-7724

PECK'S MEN'S WEAR

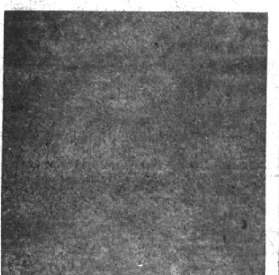
108 S. Woodward



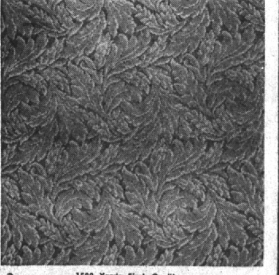
908 Yards First Quality Super Thick
ALL WOOL TWIST WEAVE
A clearance of a \$17.00 yard wool twist. An extra heavy plush textured twist, 12" and 15" wide in all the favorite decorator colors. Below our own cost.
\$8.88 sq. yd.
Also 425 yds. 3 Ply all wool twist.....\$5.98 sq. yd.



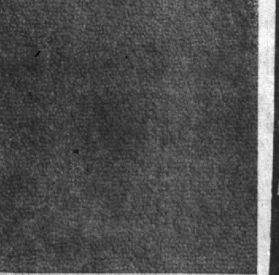
300 Yards First Quality
BARK TEXTURED CARPET
One of our very fine textured carpets. A sturdy broadloom built to last wear. Choice from grey, green, beige and nutrie. 12" or 15" widths. Below dealer's cost.
\$5.98 sq. yd.



850 Yards First Quality
LUXURY TWEED HANDMADE
A thick broadloom handmade broadloom fagged at Beckwith Evans at \$13.98. 4 color combinations 12" or 15" widths to be cleared at an unbelievable price.
\$7.98 sq. yd.



1500 Yards First Quality
EMBOSSED BROADLOOM
A wonderful buy of a sturdy embossed carpet in a graceful leaf pattern. 12" wide made to sell for \$10.98. Below dealer's cost today.
\$4.98 sq. yd.



1750 Yards Super Thick All Wool
LUXURY PLAIN CUT PILE
Extra-Thick 4 ply all wool yarns. At five as many carpets selling for \$20. 12" and 15" wide in grey, yellow green, forest green, aqua, blue, beige, cocoa, wood rose. Dollars below dealer's cost.
\$8.98 sq. yd.

Our Annual Inventory Clearance! A Once a Year Opportunity to Buy First Quality Broadloom at less than what Most Dealers Pay!

Beckwith-Evans

4 DAY SALE

First Quality broadloom priced so low that if you check closely you'll find that most of it is priced below what most dealers pay... and some actually below our own cost. Our Once A Year after inventory Sale is loaded with values like these. You'll find hundreds more in our two great stores. Don't miss this opportunity... Check every item... in this ad and in our store. You'll never save as much again.

Save One-Third to One-Half on these...

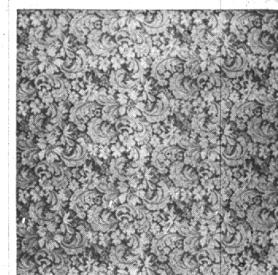
Single rolls and roll balances that give you unheard of savings. Beckwith Evans huge volume of wall to wall installations make it possible to sell pieces like these at fantastically low clearance prices. Single roll and roll balance items are limited, come early for best selection.

Single Rolls

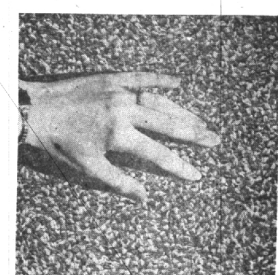
Size Description	Sq. Yd.	Sq. Yd.	Was	Now
15' Gold 2 Frame Loop Wool Wilton	12.98	6.49		
15' Blue 2 Frame Loop Wool Wilton	12.98	6.49		
15' Green 2 Frame Loop Wool Wilton	12.98	6.49		
9' Greenless 2 Level Tweed	9.98	4.99		
12' Green Heavy Plain Rayon-Nylon	6.98	3.49		
12' Burgundy 2 Frame Wool Wilton	9.98	4.98		
12' Green Bark Texture	9.98	4.98		
12' Green Heavy Wool Twist	10.98	5.49		
15' Beige Embossed Wool Wilton	9.98	4.98		
15' Gold Tones Wool Tweed	12.98	6.49		
12' Heavy Green Plain Wool Velvet	10.98	5.49		
12' Hunter Green Hi File Flax	12.98	6.49		
12' Green Cut Cotton	3.98	1.98		
12' Brown Cut Cotton	3.98	1.98		
12' Beige Thick Carved Loop	9.98	4.98		
12' Beige Rayon-Nylon	5.98	2.98		
12' Brown Cut File Rayon	5.98	2.98		
12' Burgundy Wool Twist	10.98	5.49		
12' Turquoise Cut File Rayon-Nylon	6.98	3.49		
12' Green Shag File Cotton	5.98	2.98		
12' Lime Shag File Cotton	5.98	2.98		
12' Hunter Green Plain Cotton	5.98	2.98		
12' Grey Heaviest Rayon Cut File	9.98	4.98		
12' Peach Heavy Rayon Nylon Cut	7.98	3.98		
12' Blue 3 Ply Wool Twist	11.98	5.98		
12' Grey and Red Leaf Floral	1.98	.98		
15' Nutria Wool Handmade Cut File	13.98	6.98		
9' Grey Carved Two Frame Wool Wilton	10.98	5.49		
9' Grey Rayon Twist Loop	8.98	2.98		
9' Grey Floral and Leaf Wool	9.98	4.98		
9' Green Heavy two level Tweed	9.98	4.98		
9' Two level Wool Homespun	7.98	3.98		
9' Beige Heavy Embossed on Twist	9.98	4.98		
9' Rose Heavy Embossed on Twist	9.98	4.98		
9' Beige Heavy Floral	9.98	4.98		
9' Green Heavy Floral	9.98	4.98		
15' Taupe Heavy Wool Tweed	12.98	6.49		
15' Brown Heavy Wool Tweed	12.98	6.49		
15' Purple Fine Cut File Cotton	7.98	3.98		
12' Green Carved Wilton Cotton	9.98	4.98		

Roll Balances

Size Description	Was	Now
9'x12'3" Aqua Hard Loop Cotton	110.00	39.95
12'x15'4" Green Hard Loop Cotton	120.00	44.95
11'x14'9" Extra Thick Grey Rayon Nylon	100.00	49.95
11'x12'8" Heavy Tweed Broadloom	132.00	64.95
12'x11'8" Grey Finest Rayon Nylon	154.00	59.95
9'x12'7" Grey Hard Loop Cotton	60.00	19.95
12'x8" Heavy Grey Ground Floral	100.00	39.95
9'x12'8" Grey Thick Carved Loop	120.00	49.95
12'x8" Beige Heavy 3 Ply Wool Twist	130.00	49.95
12'x8" Grey 7 Row Wool Floral	120.00	49.95
12'x11" Beige Hard Loop Cotton	154.00	59.95
12'x13" Turquoise 3D Wool Wilton	180.00	89.95
12'x10" Luggage 3 Ply Wool Texture	155.00	74.95
12'x12" Nutria Heavy Wool Wilton	192.00	74.95
12'x11" Wool and Nylon Bark Texture	165.00	82.50
12'x13" Beige 3 Ply Fine Wool Twist	210.00	104.95
12'x11" Grey Embossed Wool Wilton	190.00	74.95
12'x12" Nutria Textured Wool Wilton	187.00	92.95
12'x12" Grey Heavy Embossed Floral	176.00	82.95
12'x12" Green 2 Frame Wool Wilton	210.00	79.50
12'x11" Beige Tweed Wool Texture	176.00	79.50
12'x10" Brown and Green Wool Tweed	182.00	89.95
12'x10" Beige Rayon Nylon Hand Twist	187.00	89.95
12'x11" Beige Finest Rayon Nylon Cut File	150.00	69.50
12'x11" Rose 100% Nylon Cut File	180.00	79.50
12'x11" Gold Heavy Rayon Nylon Cut File	150.00	69.50
10'x14" Dark Grey Heavy Rayon Cut File	120.00	49.95
12'x15" Cocoa 3 Ply Wool Bark Texture	210.00	99.95
15'x11" Burgundy 3 Ply Heavy Wool Text.	210.00	99.50
12'x11" Green Bark Wool Wilton	160.00	79.50
12'x11" Grey Embossed Wool Wilton	150.00	69.95
12'x10" Wool Tweed Green Tones	145.00	69.95
15'x17" Beige Thick Wool Embossed Wilton	350.00	174.50
15'x22" Heavy 3 Ply Charcoal Wool Twist	450.00	199.50
Green Heavy 3 Ply Wool Twist	320.00	159.50
15'x18" Hunt, Green Finest 3 Ply Wl. Text.	355.00	177.50
12'x18" Grey Bark Wool Wilton	280.00	139.95
12'x17" Beige Heavy Embossed on Twist	235.00	114.95
12'x17" Beige Grey and Red Embossed Wl.	235.00	114.95



240 Yards First Quality
7 ROW WOOL FLORAL
Regular \$10.98 broadloom in a multi-color floral spray 12" wide. A fine wool construction that will give you years of wear. Below dealer's cost.
\$6.98 sq. yd.



850 Yards First Quality
LUXURY RAYON NYLON
A fine cut pile rayon nylon in a multi-color floral spray 12" wide. A fine wool construction that will give you years of wear. Below our own low cost.
\$3.98 sq. yd.

After-Inventory Savings on Tile and Linoleum

Genuine Imported
CERAMIC WALL TILE
Six Colors Easy to Install Reg. 1.19 **69¢** sq. ft.
'Harlequin' Pattern
VINYL PLASTIC TILE
Newest Tiling in Tile **12¢** sq. ft.

Easy to Install
27" PLASTIC COUNTER TOP
Won't stain or crack
Grease proof Alcohol proof
29¢ lin. ft.

Vinyl Sealed Linoleum Tile 9"x9" 10¢. If perfect 22¢ sq. ft.
Heaviest Felt Base Choice of Patterns Cut from Roll **39¢** sq. ft.
Asphalt Tile Dark Marbles 4 1/2¢ sq. In. Corth. of 80 Tiles Light Marbles 6 1/2¢ In Corth. of 80 Tiles

World's Largest Floor Covering Specialists
Beckwith-Evans
Named Nation's TOP Carpet Retailer

3200 Yards All Wool
EMBOSSED BROADLOOM
12" and 15" wide in grey, green, beige and nutrie. 12" priced below dealer's cost.
\$5.98 sq. yd.

400 Yards First Quality
100% NYLON BROADLOOM
Wonderful, deep luxurious cut pile all nylon broadloom. Grey, green, beige and nutrie. 12" priced below our own low cost.
\$5.98 sq. yd.

5211 Schaefer Mr. Michigan Tiffany 6-6300 24242 Woodward S. of Ten Mile Rd. Jordan 6-4790 Lincoln 7-7100

ONLY 10% DOWN and up to 2 Years to Pay