

Keller-Koch

To Sell Dealerships

Richard W. Keller, general manager of the Keller-Koch, Inc., Chrysler, Plymouth, Imperial agency in Birmingham, disclosed Wednesday that he and Victor C. Koch plan to sell the local dealership as well as a newly-acquired Dodge agency in Chicago.

Keller and Koch are principal owners of the two dealerships. No reason was given for the move.

Keller said he could not disclose his future plans at present.

KELLER-KOCH acquired the Birmingham agency in 1953 and added the Chicago dealership just last February. Keller has been running the local organization while Koch headed the Chicago operation.

Keller said he did not know just when the businesses would be sold. Both of the young executives are sons of pioneers in the automotive industry. Keller is the youngest son of K. T. Keller, who recently resigned as chairman of the board of the Chrysler Corp.

Koch is the son of Victor C. Koch, Sr., retired Fisher body executive.

SPRAYING
ELM TREES
Shade Trees, Shrubs, Fruit Trees and Orchards
Lawn spraying for weed control. Also spraying for mosquito control.

Michael J. Jasso
40 Biltmore Birmingham
Phone MUlberry 9-2700

MORTGAGE LOANS
on new or used Homes
Quick Service - Low Rates
Johnstone & Johnstone
209 Hammond Bldg. WO 3-6222



BOOKS... BOOKS... BOOKS

Science! Fiction! Humor! Diction!
Murder! Travel! Dramat! Fable!
And That Gives You the Idea...
La Belle's Has Books for EVERYONE!

La Belles

137 WEST MAPLE

Birmingham's Shop of Books, Stationery & Gifts

Precinct-by-Precinct Tabulation of Birmingham's Monday Vote

Precincts	1	2	3	4	5	6	7	8	9	10	11	TOTAL
FOR CITY COMMISSION												
Renfrew	199	87	175	52	94	82	82	100	110	43	46	1,070
Ingraham	199	93	173	36	78	76	83	102	115	41	35	1,031
Fill	24	12	23	8	8	30	25	14	23	14	55	236
Hansen	20	15	13	11	22	30	6	8	18	23	13	170
FOR LIBRARY BOARD												
Miller	192	93	160	45	83	96	74	101	111	56	60	1,071
Ireland	194	88	147	44	79	95	77	98	120	56	62	1,060
PROPOSALS												
One-Charter Amendment												
Yes	196	101	180	49	92	101	96	105	122	56	75	1,173
No	12	3	10	3	11	10	6	6	12	7	3	83
Two-Property Sale												
Yes	198	86	172	51	89	94	91	102	124	63	63	1,123
No	11	13	18	3	13	18	9	9	11	8	11	124
Three-Property Sale												
Yes	191	84	175	50	83	96	93	101	119	47	61	1,100
No	18	14	11	2	19	13	8	9	14	12	11	131
REGISTRATION												
1339	989	1207	656	977	1185	1111	1183	1286	1067	963	11,963	
226	111	197	55	107	122	103	121	141	67	84	1,334	
% of Registration												
16.9	11.1	16.3	8.4	10.3	9.3	10.2	11.1	6.3	8.7	11.1		

Predicts Early Start On Evergreen Project

A start on the upper portion of the Evergreen Interceptor (EI) within three or four months "is entirely possible", with completion of the entire project down to the 8 Mile road by the end of 1958 or early 1959, Birmingham City Manager D. C. Egbert predicts.

While this would be a year or so beyond the court's specified date of Dec. 31, 1957, Egbert believes the court, with the state water resources commission's consent, would extend the date once the project actually gets under construction.

Birmingham commission have approved Egbert's suggestion that Birmingham disposal plant facilities be extended temporarily to Bloomfield Hills and Troy.

Officials of those cities, Egbert outlined, have expressed the desire to get Birmingham facilities now, rather than have separate small sewage plants built along the River Rouge by private land developers.

Birmingham now has such an arrangement with Bloomfield township, and would expand contract terms to include the other two municipalities, the Birmingham manager outlined.

The contract would be cancelled if the EI below 14 Mile is constructed. Should this south portion not go through, the agreement would become permanent with service provided through an authority which would buy the Birmingham plant.

ON GOV. Williams' desk now is a bill which would permit Southfield to enter the EL Lathrup Village.

BIRMINGHAM BLUE PRINT AND SUPPLY COMPANY
W. S. McAlpine, Prop.
• Blue Prints • White Prints • Photostats • Transparents

QUICK SERVICE While You Wait
Ph. MI 4-3738

WE AIM TO PLEASE
Located in Birmingham Opposite "Wigley"—416 E. Woodward
Open Weekdays & Saturday A. M.

Planners Discuss Recreation Needs

Area recreation facilities were discussed last night at the regular meeting of the South Oakland planning council at the Birmingham municipal building.

Present and future recreation needs were discussed informally by representatives of the planning commissions of the municipalities in the council.

Want a good used car? Look in the Classified columns under "For Sale—Automobiles."

LOOK AT THESE PRICE TAGS

TREADLE \$18.33
PORTABLE \$14.93
PORTABLE \$23.37
CABINET \$39.44

SINGER HAS PUT ON Used Sewing Machines

Yes, they're low, there's a limited supply and they won't last long. Take advantage of this sale on various makes of used machines, reconditioned by the SINGER SEWING MACHINE CO.

SINGER SEWING CENTER
177 W. Maple MI 4-0050

Crash Victim May Face Drunk Charge

TROY—A warrant will be sought charging Thomas F. Boyle, 60, of 2763 E. 16 Mile road, with drunk driving which resulted in a head-on collision which injured two persons Monday, according to Police Chief David E. Grapp.

Clifford Chimer, 55, of 3837 John R. told police he was west-bound on 16 Mile east of John R. when Boyle's auto swerved in front of him.

Chimer suffered forehead cuts and Boyle received cuts and bruises. They were taken to St. Joseph Mercy hospital for treatment.

April 5, 1956 THE BIRMINGHAM ECCENTRIC Page 3

"CHARM FOR CHILDREN"
Classes for all ages
Ballot — Ballroom — Tap Dancing
Modeling — Speech — Poise

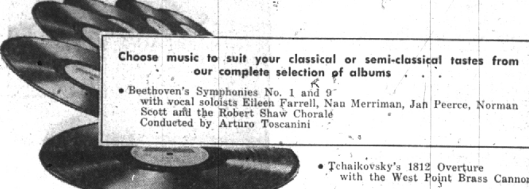
Barbara ReNee' Studio
912 S. Woodward MI 6-4456
Birmingham 2nd Floor, No. 3
Open Daily
ADULT EXERCISE CLASSES

Open Thurs. and Fri. till 8
Sunday 1 to 5:30 p.m.

Our Thanks To You . . .

It has been possible only through your patronage that MARTY'S RECORDS is now solidly established in the Birmingham, Bloomfield, Southfield and Franklin areas. For this we say simply . . . thank you very much.

Marty's have personalized GIFT CERTIFICATES for every occasion in any amount you desire



Choose music to suit your classical or semi-classical tastes from our complete selection of albums

- Beethoven's Symphonies No. 1 and 9 with vocal soloists Eileen Farrell, Nau Merriman, Jan Peerce, Norman Scott and the Robert Shaw Chorus Conducted by Arturo Toscanini
- Tchaikovsky's 1812 Overture with the West Point Brass Cannon
- The complete score of Tchaikovsky's "Swan Lake Ballet" Antal Dorati conducting the Minneapolis Symphony Orchestra
- The complete score of Tchaikovsky's "Sleeping Beauty Ballet" Antal Dorati and the Minneapolis Symphony Orchestra
- Complete recording of Mozart's opera "Don Giovanni" with soloists Cesare Siepi, Ferrando Corena, Anton Dermota, Suzanne Danco, Lisa Della Casa, Hilde Gudden, Walter Berry, Kurt Boehme and the Vienna State Opera Chorus
- Vienna Philharmonic Orchestra conducted by Joseph Krips. This album includes the complete libretto . . . musical score and English translations.
- Kurt Weill's "The Three Penny Opera" Complete score . . . Lotte Lenya, soloist

From Broadway Stage Hits . . .

- Original cast and complete score of "My Fair Lady" with Rex Harrison and Julie Andrews
- Original cast recording of "The Boy Friend" a new musical comedy of the zany 20's
- Rodgers and Hammerstein's "Pipe Dream" Helen Traubel, William Johnson, Judy Tyler

MARTY'S RECORDS

featuring a complete line of popular and classical recordings
2503 W. MAPLE Corner Cranbrook MI 6-0927

AFTER-EASTER CLEARANCE
of 9 styles Patent Leather
NOW \$10.90

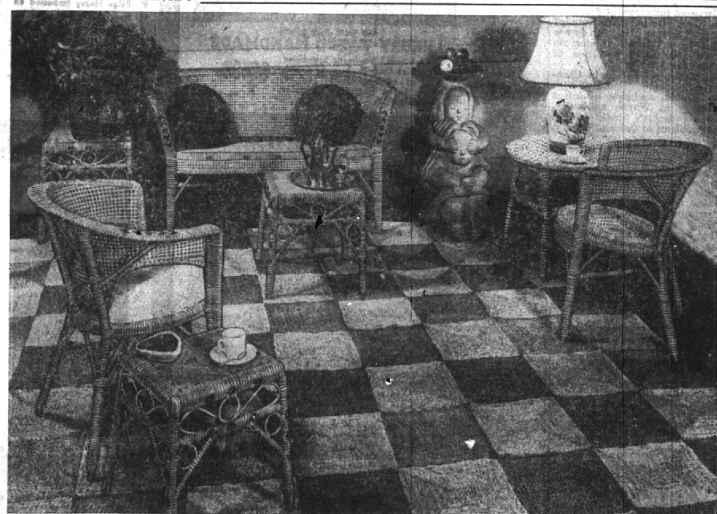


Black lightning! . . . fabulous streaks of jet patent . . . spine-tling excitement for your spring wardrobe.

Daring lines . . . in bold dips . . . in airy sandals and sleek pumps. Here . . . all the gleam of patent . . . all the beauty of fine styling and expert craftsmanship . . . in Salon . . .

MI 4-7720
Open Friday Evenings for Your Convenience
Herbert Burr
Shoe Salon
255 N. Woodward Birmingham

LEWIS—fine furniture



GET AN ENTIRE ROOM FULL OF PEEL CANE FURNITURE

For All 6 Pieces \$34.95 \$5 Down

IDEAL FOR BASEMENT RUMPUS ROOM DEN PATIO

Versatility and casual comfort at a startling low price. For indoors and out it can be used in living room, den, or recreation room. Imported from Hong Kong, it is lightweight and handsome. An ideal room outfit at a generous saving.

YOU GET ALL THIS:
1 TUB SETTEE
2 TUB CHAIRS
3 NESTED TABLES

235 PIERCE ST. BIRMINGHAM
PHONE MIDWEST 4-4920



MUNICIPAL PARKING LOT ONE BLOCK SOUTH OF OUR STORE