

### Elect Campbell Lathrup's Mayor

LATHRUP — John G. Campbell was reappointed mayor by unanimous vote at the organizational meeting held Monday night. Richard N. Cogger was named mayor pro tem by a four-to-one ballot. Board of review members were quizzed on a cut of \$12,430 assessment on 252 vacant lots owned by the Charles D. Kelley. Board Chairman Loren Becker told council the reduction had been made because wording of the zoning law was confusing and final use of neighboring lots was still a question to be settled by court. The lots are now assessed at what they had been set last year. The \$12,430 is a raise in assessments which was general in the city this year.

PETE'S grocery will be liable for two-thirds the cost of putting in guard rails by the county in front of his store as a safety factor, council decided Monday. County will pay one-third of the \$275. Council may hold a special meeting next week to take action on what the city intends to do to end Rouge River pollution. By court decree they have until May 1 to decide.

Lathrup is running short of cash in several accounts. Council had to vote \$282.45 from contingency fund for special funds, and will have to decide on whether to vote another \$1,800 to cover future bills at the next meeting.

A public hearing will be held April 25 to hear complaints, if any, on 16 special paving projects. Thomas N. Reed told council he objected to having to pay for what he called the city's share of the paving and said one petition at least, should be declared invalid because it did not have the required 70 per cent of property owners, if the city did not sign.

### Committee Meets To Plan Events For School Fair

EAST SOUTHWFIELD — Committee members working on the East Southfield PTA spring fair to be given May 4 at the school, met Friday at the home of fair chairman, M. Johannes Eggertson, 1770 West 12 Mile road.

The committee will be working with East Southfield teachers to organize the various booths, games and refreshments. Assisting Mrs. Eggertson is co-chairman Mrs. Aric Klapp.

Attending the meeting were Mrs. Robert Fuller, Mrs. George Wirth, Mrs. Gerald Eastlich, Mrs. Edward Brown, Mrs. William Brynn, Mrs. Kenneth Hoffman, Mrs. Joseph Zarr, Mrs. Richard Exler, Mrs. Paul Dawson, Mrs. Joseph Gross, Mrs. Albert Pfister and PTA president, Mrs. Theodore Boschma.

### Walnut Lake PTA To See Two Films At April 16 Meeting

WALNUT LAKE — "Dangerous Stranger" and "Name Unknown" are two films to be shown at the April 16 meeting of the Walnut Lake PTA.

These movies present information on sex deviates, and are shown as a security measure. "An ounce of prevention is worth a pound of cure," says Lieut. Henry Timm, Birmingham police juvenile officer, who will be present to give additional information and answer questions after the showings.

Lieut. Timm stressed that this is an opportunity to get the latest information on a problem that should be of interest to every parent.

### Rain Changes Plans Of Scout Cook-Out

EAST SOUTHWFIELD — Girl scouts of troop 252, East Southfield school, traveled to Proud lake recreation area Saturday for a scheduled all-day cookout. After cooking breakfast, however, rain got the better of the girls and they returned home by noon.

Girls braving the weather were Barbara Moorehead, Patty Delong, Nora Goss, Sue Airy, Judy Delapierre, Mary Potters, Marilyn Gross, Becky Daniels, Cheryl Barty and Donna Brook.

Accompanying the girls were Mrs. James Stansfield, leader, and Mrs. Charles Airy, co-leader.

### Announce Birth

EAST SOUTHWFIELD — A son, Michael James was born April 2 to Mr. and Mrs. Gerald Woltz, 28728 Everett. He weighed 7 lbs 11 oz. and is his first child.

### Spring Grass Fires

SOUTHWFIELD — Nine spring grass fires kept Southfield township firemen busy during the past week with no damage reported. Five of the nine grass fires were extinguished last Thursday.

**The BIRMINGHAM Insurance Agency**  
Insurance For Every Need  
Charles B. Randall  
Oscar P. Peterson  
Bruce F. Randall  
Frank W. Whitson  
114 SOUTH WOODWARD  
Phone MI 4 2422  
AFTER WE SELL WE SERVE

### Kiwanians to Hold 'Ladies' Night' At April 18 Meeting

SOUTHWFIELD — Kiwanis club will hold Ladies' Night next Wednesday at a meeting in the cafeteria of Southfield high school. Dinner will be served by a cater-

ing service, following which members and wives will attend the annual high school band concert directed by Southfield high school band director, and Kiwanian, James

Tuesday, April 17, Kiwanis members will attend an inter-club meeting with the Pontiac Kiwanis at Elk Temple, Pontiac. Speaker

for the evening will be the warden of Jackson prison. Members are requested to contact James Burrows for reservations.  
You will find many bargains in The Eclectic Classified Columns.

### Larry Hard Wins Trip to Capitol

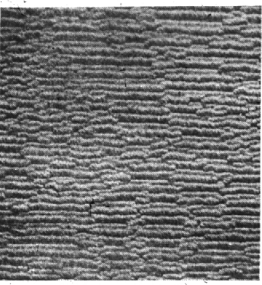
FRANKLIN — Larry Hard, sixth grade student at Franklin school and captain of the safety patrol, will receive a four-day all expenses trip to Washington, D. C. as a

guest of the Automobile Club of Michigan.  
Larry, son of Mr. and Mrs. Chester A. Hard, 31900 Inlet, was chosen a representative of

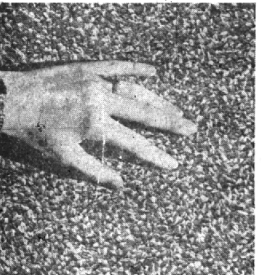
Franklin school in recognition of the vigorous school-crossing safety campaign during this school year.  
Larry will leave for the nation's capitol May 3 and will meet government officials and see famous and historical sights.



425 Yards First Quality  
**ALL WOOL TWIST WEAVE**  
A clearance of a \$10.00 yard wool to 4 1/2. A heavy nubby textured twist, 12" and 15" wide in grey, green, beige, and rose. Below our dealers cost.  
**\$5.98** sq. yd.



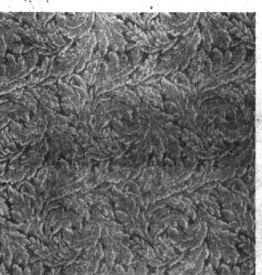
3500 Yards First Quality  
**BARK TEXTURED CARPET**  
One of our very fine textured carpets. A sturdy broadloom built to take wear. Choice from grey, green, beige and nutria. 12" or 15" widths. Below dealer's cost.  
**\$5.98** sq. yd.



850 Yards First Quality  
**LUXURY TWEED HANDMADE**  
A thick need handmade broadloom fagged at Beckwith-Evans at \$13.98. 4 color combinations 12" or 15" widths to be cleared at an unbelievable price.  
**\$7.98** sq. yd.



1750 Yards Super Thick All Wool  
**LUXURY PLAIN CUT PILE**  
Extra Thick 4 ply all wool yarns. As fine as many carpets selling for \$25. 12" and 15" wide in grey, willow green, forest green, aqua, blue, beige, cocoa, wood rose. Dollars below dealer's cost.  
**\$8.98** sq. yd.



3500 Yards First Quality  
**EMBOSSED BROADLOOM**  
A wonderful buy of a sturdy embossed carpet in a graceful leaf pattern. 12" wide made to sell for \$10.98. Below dealer's cost today.  
**\$4.98** sq. yd.

# Beckwith-Evans

First Quality broadloom priced so low that if you check closely you'll find that most of it is priced below what most dealers pay... and some actually below our own cost. Our Once A Year, after inventory Sale is loaded with values like these. You'll find hundreds more in our two great stores. Don't miss this opportunity... Check every item... in this ad and in our store. You'll never save as much again.

## Save One-Third to One-Half on these...

Single rolls and roll balances that give you unheard of savings. Beckwith-Evans huge volume of wall to wall installations make it possible to sell pieces like these at fantastically low clearance prices. Single roll and roll balance items are limited, come early for best selection.

### Single Rolls

Size	Description	5q. Was	5q. Now
15'	Gold 2 Frame Loop Wool Wilton	12.98	6.19
15'	Blue 2 Frame Loop Wool Wilton	12.98	6.49
12'	Green 2 Frame Loop Wool Wilton	12.98	6.49
9'	Green 2 Level Tweed	9.98	4.98
12'	Green Heavy Plain Rayon-Nylon	6.50	3.49
12'	Burgundy 2 Frame Wool Wilton	9.98	4.98
12'	Green Bark Textured	9.98	4.98
12'	Green Heavy Wool Tread	10.98	5.49
15'	Gold Tones Wool Tread	12.98	6.49
12'	Heavy Green Plain Wool Velvet	10.98	5.49
12'	Hunter Green HI Pile Plain	12.98	6.49
12'	Green Cut Cotton	3.98	1.98
12'	Brown Cut Cotton	3.98	1.98
12'	Beige Thick Carved Loop	9.98	4.98
12'	Beige Rayon-Nylon	5.98	2.98
12'	Brown Cut Pile Rayon	5.98	2.98
12'	Burgundy Wool Tread	10.98	5.49
12'	Turquoise Cut Pile Rayon-Nylon	6.98	3.49
12'	Green Shag Pile Cotton	5.98	2.98
12'	Line Shag Pile Cotton	5.98	2.98
12'	Hunter Green Plain Cotton	5.98	2.98
12'	Grey Heated Rayon Cut Pile	9.98	4.98
12'	Peach Heavy Rayon Nylon Cut	9.98	4.98
12'	Blue 3 Ply Wool Twist	11.98	5.98
12'	Grey and Red Leaf Floral	9.98	4.98
15'	Nutria Wool Handmade Cut Pile	13.98	6.98
9'	Grey Carved Two Frame Wool Wilton	10.98	5.49
9'	Grey Rayon Twist Loop	5.98	2.98
9'	Grey Floral and Leaf	9.98	4.98
9'	Green Heavy two level Tread	9.98	4.98
9'	Two level Wool Homespun	7.98	3.98
9'	Beige Heavy Embossed on Twist	9.98	4.98
9'	Rose Heavy Embossed on Twist	9.98	4.98
9'	Beige Heavy Floral	9.98	4.98
9'	Green Heavy Floral	9.98	4.98
15'	Nutria Wool Handmade Cut Pile	13.98	6.98
15'	Blue Heavy Wool Tread	12.98	6.49
12'	Purple Fine Cut Pile Cotton	7.98	3.98
12'	Green Carved Wilton Cotton	9.98	4.98

### Roll Balances

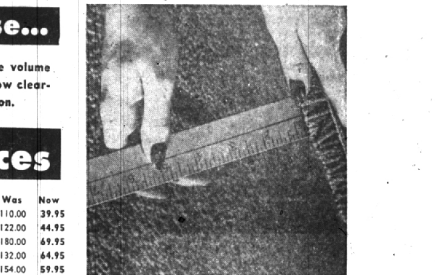
Site	Description	Was	Now
9'x12 1/2"	Aqua Hard Loop Cotton	110.00	39.95
12'x15 1/4"	Green Hard Loop Cotton	120.00	44.95
11'x14 1/4"	Extra Thick Grey Rayon Nylon	180.00	69.95
11'2"x15"	Heavy Tread Broadloom	130.00	49.95
12'x11 1/8"	Grey Finest Rayon Nylon	154.00	59.95
12'x7 3/8"	Grey Hard Loop Cotton	60.00	19.95
12'x8"	Heavy Grey Ground Floral	100.00	39.95
12'x8 1/2"	Grey Thick Carved Loop	120.00	49.95
12'x8 1/2"	Beige Heavy 3 Ply Wool Twist	130.00	49.95
12'x8"	Tweed Wool Texture	120.00	49.95
12'x8 1/2"	Grey 7 Row Wool Floral	120.00	49.95
12'x11 1/2"	Turquoise 3D Wool Wilton	180.00	89.95
12'x10 1/4"	Lugage 3 Ply Wool Texture	155.00	76.95
12'x12"	Nutria Heavy Wool Wilton	192.00	94.95
12'x11 1/2"	Wool and Nylon Bark Texture	165.00	82.50
12'x13 1/2"	Beige 3 Ply Fine Wool Twist	210.00	104.95
12'x11 1/8"	Grey Embossed Wool Wilton	190.00	94.95
12'x12 1/2"	Nutria Textured Wool Wilton	187.00	92.95
12'x12"	Grey Heavy Embossed Floral	176.00	82.95
12'x13 1/2"	Green 2 Frame Wool Wilton	210.00	99.50
12'x11 1/2"	Beige Tread Wool Texture	174.00	77.95
12'x10 1/2"	Brown and Green Wool Tread	182.00	89.95
12'x10 1/2"	Beige Rayon Nylon Hard Twist	98.00	89.95
12'x11 1/2"	Beige Finest Rayon Nylon Cut Pile	150.00	69.50
12'x11 1/2"	Rose 100% Nylon Cut Pile	180.00	79.50
12'x11 1/2"	Gold Heavy Rayon Nylon Cut Pile	150.00	69.50
10'4"x14"	Dark Grey Heavy Rayon Cut Pile	120.00	49.95
12'x15 1/2"	Cocoa 3 Ply Wool Bark Texture	210.00	99.95
15'x11"	Burgundy 3 Ply Heavy Wool Text.	210.00	99.50
12'x11 1/2"	Green Bark Wool Wilton	160.00	79.95
12'x11"	Grey Embossed Wool Wilton	180.00	89.95
12'x10"	Wool Tread Green Tones	145.00	49.95
15'x17"	Grey Thick Wool Embossed Wilton	350.00	174.50
15'x12 1/2"	Heavy 3 Ply Charcoal Wool Twist	450.00	199.50
15'x15 1/2"	Green Heavy 3 Ply Wool Twist	320.00	159.50
15'x18 1/2"	Hunt Green Finest 3 Ply WL Text.	355.00	177.50
12'x18 1/2"	Grey Bark Wool Wilton	280.00	139.95
12'x17 1/2"	Beige Heavy Embossed on Twist	235.00	114.95
12'x17 1/2"	Beige Grey and Red Embossed WL.	235.00	114.95

### After-Inventory Savings on Tile and Linoleum

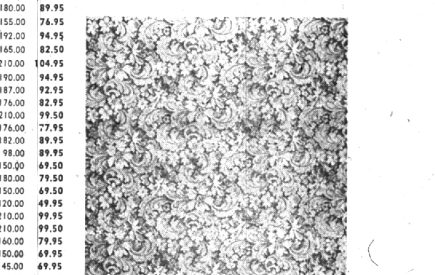
GENUINE IMPORTED  
**CERAMIC WALL TILE**  
Six Colors Easy to Install **69¢** sq. ft.  
'Harlequin' Pattern  
**VINYL PLASTIC TILE**  
Newest Thing in Tile **12¢** sq. ft.  
Easy to Install  
**27" PLASTIC COUNTER TOP**  
Won't stain or crack  
Grease proof  
Alcohol proof  
**29¢** sq. ft.  
Standard Gauge Linoleum Tile 12"x12" **10¢** sq. ft.  
Heaviest Felt Base  
Choice of Patterns Cut from Roll **39¢** sq. yd.  
Asphalt Tile Dark Marbles **4 1/2¢** sq. ft. Light Marbles **6 1/2¢** in Cartons of 80 Tiles

World's Largest Floor Covering Specialists  
**Beckwith-Evans**  
Named Nation's TOP Carpet Retailer  
5211 Schaefer  
Nr. Michigan  
Tiffany 6-6300  
24242 Woodward  
S. of Ten Mile Rd.  
Jordan 6-4700 Lincoln 7-7100  
HOME SERVICE, TOO  
Choose your carpeting in the comfort of your own home. See it right where you will use it. Measure, pattern, and fabricate.  
CALL MISS DOLLINS  
Tashmore 6-5200  
750 Yards First Quality  
**GEOMETRIC WILTON**  
A very special buy of an extra thick carved all wool Wilton. Choice of decorator colors. 12 ft. wide. The quality of geometric is equal to that of many carpets selling for \$13. a sq. yd.  
**\$6.98** sq. yd.  
**ONLY 10% DOWN and up to 2 Years to Pay**

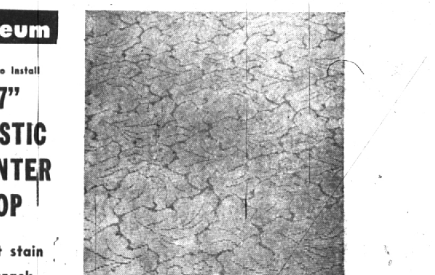
**2nd BIG WEEK Inventory Sale**



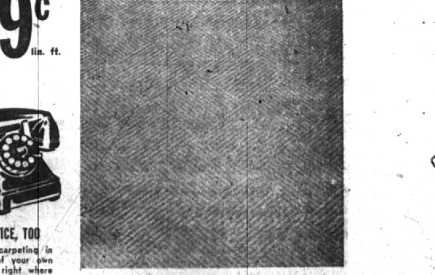
850 Yards First Quality  
**LUXURY RAYON NYLON**  
A fine cut pile rayon nylon that we are discontinuing. Over 1/2" thick. Made to sell for \$9.00. 12" wide. 6 colors. Below our own low cost.  
**\$3.98** sq. yd.



250 Yards First Quality  
**7 ROW WOOL FLORAL**  
Regular \$10.98 broadloom in a multi-color floral spray 12" wide. A fine wool construction that will give you years of wear. Below dealer's cost.  
**\$6.98** sq. yd.



2200 Yards All Wool  
**EMBOSSED BROADLOOM**  
12" and 15" wide in grey, green, beige, nutria, rose and gold. Classic scroll leaf pattern below today's dealer's cost.  
**\$5.98** sq. yd.



750 Yards First Quality  
**GEOMETRIC WILTON**  
A very special buy of an extra thick carved all wool Wilton. Choice of decorator colors. 12 ft. wide. The quality of geometric is equal to that of many carpets selling for \$13. a sq. yd.  
**\$6.98** sq. yd.