

NEAR NEW HIGH SCHOOL



Three spacious bedrooms.
Living room 22 1/2 x 13 feet.
Full size dining room.
Good eating space in bright kitchen.
Lavatory on first floor.
Well landscaped.
Carpets and drapes included.
\$29,500.
Call for an appointment now.

WALSH, JAMES & WASEY CO.
Realtors
431 S. WOODWARD, BIRMINGHAM
MIDWEST 4-6500

LOWER LONG LAKE AREA BLOOMFIELD



CHARMING QUALITY in the peace and quiet of Bloomfield and orchards.
Country living while being near the city.

3 Bedrooms	Large living room with thermopane windows and fireplace	Dining room with French doors to covered porch
2 1/2 Baths	Panoramic library with fireplace	Breakfast area in kitchen
Spacious Laundry room	Built-in range and oven	Dishwasher
Disposal	Many other built-in conveniences	

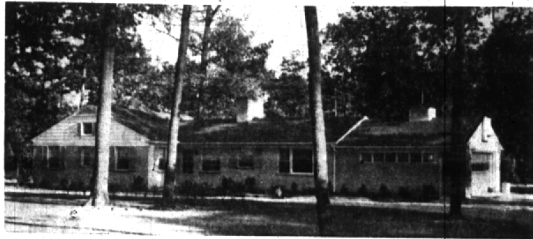
VAUGHAN SCHOOL DISTRICT
Attractively priced

TOM ELSTON INC
REALTY

1081 W. Maple
at Telegraph

MI 6-2900

HERE'S WHY!



This two year old modern ranch has:

LOCATION: Oakland Hills Country Club area.
EXCELLENT LIVING SPACE: Carpeted living room and dining room; good eating space in well appointed kitchen; three bedrooms and two and a half baths.
FAMILY RECREATION SPACE: Family room on main floor plus a recreation room in the basement.

AT ONLY \$41,500

Benjamin & Stephens, Inc.

REALTORS

MIDWEST 4-3232

239 So. Woodward, Birmingham, Michigan
Open 9 a.m. to 9 p.m.

JORDAN 4-5728

Troy Makes Switch from Single Wing to Split T

A change in the offensive system will be seen on the Troy gridiron this year, with coach Nystquist shelving the wing in favor of the split T.

As a result of the switch and also because of the loss of several players, numerous changes in positions have been made by Nystquist.

THE COLTS, who expected better depth on the line this year, have lost a pair of tackles who were touted as starters, along with several other players.

Due to the constipation of a sector of Troy into the Clawson school district, regular tackle Dave Mesker and quarterback Tom Collins have been lost.

Another tackle, Steve Rightmeyer, is not available due to scholastic difficulties, and a third lineman, Ray Ernst has given up football to pursue a college music scholarship.

40 Maple Harriers Workout

Coach Kermit Ambrose greeted 40 prospects for the defending champion Maple Cross Country team which started workouts this week at the high school.

Six leading lettermen are missing from the 1954 squad which took E.M.L. dual and league meet honors.

THREE lettermen back on the team are Bob Brown, Howard Dier, E.M.L. 800 champ, and Doug Wiggazzer, league mile champion, along with a number of candidates from the unhealed reserve team of last year.

The Maple harriers took runner up honors in the regional meet and placed sixth in the state last season.

32 Cranes Open Drills

With only three lettermen among the 32 candidates which reported for the opening of drills at Cranbrook, coach Fred Campbell has concentrated on fundamentals in the first sessions this week.

THE CRANES won't don the pad until this afternoon's workout and Saturday (Campbell is hoping to hold his first intra-squad scrimmage).

"We are green all way around," and Campbell, "and we've got to work on everything."

First drills were to initiate the newcomers to offensive system and pass defense.

"WITH ALL the inexperience we won't be sure of who fills any position for another two weeks," Campbell added.

The Cranes have lost 15 lettermen from the 1954 squad which posted a 4-4 season mark.

Top veterans back are center George Garry, team captain and full-league selection, and Pete Bedford, a junior end, who played only in the season opener against Birmingham last year before getting hurt.

DAILY sessions will be held at 9:00 a.m. and 3:00 p.m. until the opening of classes, September 21.

First game for the Cranes is against Birmingham Friday night September 21 on the Maple gridiron.

Season Closes

The Birmingham Tennis Club closes the season today with a dinner meeting and elections tonight at the Fox and Hounds Inn.

Sportsweek

POLO
Sept. 11 Polo Benefit Match, Ivory field 3:00 p.m.
CROSS COUNTRY
Sept. 15 BHS vs Thurston, high school 3:00 p.m.
FOOTBALL
Sept. 16 Birmingham vs. Southfield, BHS field 8:00 p.m.
Sept. 16 Troy at Detroit Lutheran, Warren at Grand River 8:00 p.m.
GOLF
Sept. 11 Men's League Match, Final, Springdale 10:00 a.m.

Two Mile La(y)ne

Veteran Lion quarterback Bobby Lyon goes into the national League season with a total of 12,659 yards gained on passes.

He is topped only by Sammy Baugh who rolled up 22,085 yards in 16 seasons with the Redskins, and Sid Luckman who fired for 14,983 yards in his 12 years with the Bears.

★ Smile A Minute

If you are wondering what to do with party leftovers, we suggest that you don't invite them again.

Anytime a man opens the door and helps his wife into the car, you can bet that he has just acquired one of the other.

Job Wofford Wins Equestrian Trials

Happiest honors for a member came at the Metamora Horse Show, when she presented her son, Job Wofford, with the Colts John Wofford Memorial Trophy, which has been named after her husband.

JEB captured first place in the United States Equestrian Trials for the 1954 Olympic team, and he took top honors in the Metamora trial for the trophy.

To the surprise of everyone, however, Job was not one of those named as the judges announced the names of four contestants who will be invited to train at Tryon, North Carolina, for the 1956 Olympics to be held in Sweden next July.

CHOSEN were Walter Staley, a

1952 Olympic team member with Tryon, who hails from Bloomfield took fifth place with 271.7 points.

Warren, won sixth place in the younger horse.

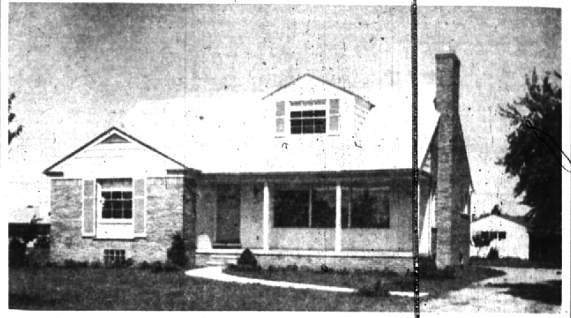
Another entry from Bloomfield Hills was Chuck Grant up on "Home Fords 'Brar Lad'".

4-Bedroom Colonial with large oak paneled Laundry room. Colored plumbing, gas heat. Beautiful maple kitchen cabinets, factory finished with E. dishwasher.

Completed with the fineness of many mementos to make a home a home of easy living.

2611 Amberly, Bloomfield Village \$13,900.00
PERCY M. NELSON COMPANY
MI 1-9333

FARM CAPE COD



Exclusive Golfview Hgts. Sub just across from New Birmingham High School and Birmingham County Club.

80 x 185 foot lot	Living room 19' x 14'
Brick	Dining room 11'6" x 11'
Quarion School District	Activities room
Storms and screens	Breakfast room 11' x 6'6"
Beautifully landscaped	2 Full tile baths
\$37,900	4 Bedrooms:
	11'6" x 14'6"
	11'6" x 11'4"
	12'8" x 11'
	16'7" x 11'

One of two distinctive homes being completed by Kassaban Builders including a beautiful ranch home.

JOHN CHIERA CO.
REALTOR

750 S. Woodward Ave. Birmingham
For 24-Hour Service Call MI. 4-8200

Select YOUR homesite NOW in

BLOOMFIELD HEIGHTS



CHOICE LOTS FOR SALE
HOUSEMAN-SPITZLEY CORPORATION

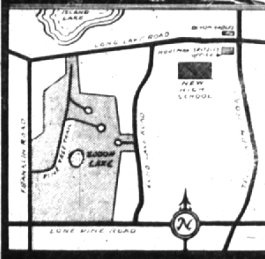
BIG LOTS . . . 175' or more FRONTAGE!

On Southern Oakland County's Highest Elevation

Only in exclusive Bloomfield Heights will you find homesites so individual in character that no two look alike. High side lots, on winding roads carved out of scenic, rolling countryside. Fine neighboring homes in a beautiful woodland setting.

Excellent building restrictions—1,800' and up. Close to Kirk-in-the-Hills Church, golf courses, lakes. Within the Bloomfield Hills school district. Only 20 minutes from Northland! Low Township taxes.

Lots still priced comparatively low. Telephone or write for location map and restrictions.



HOUSEMAN-SPITZLEY CORPORATION
406 WASHINGTON BLVD. BLDG. DETROIT 26. PHONE WO. 3-4816 - BLOOMFIELD OFFICE PHONE MIDWEST 4-7422