

**Coronation Ball
Opens High School
Social Calendar**

Girls' social clubs in the high school select delegates to vie for the title. The formal ceremony of crowning the queen automatically sees her escort named king of the ball.

Working on the committee this year are Claire DeNador and Brenda Gross, decorations; Marcia Reynolds and Claire Jacobs, publicity; Julie Colwell and Denise Guillet, programs.

General chairman, Sandy Gross, said tickets were being sold at the school office this week as well as door sales at the dance.



MRS. NORMAN RICHARD MAGEL

**Lathrup Girl Marries
Another MSU Student**

Both Mr. and Mrs. Norman Richard Magel will be attending Michigan State University, this fall, after a wedding trip through Northern Michigan.

The couple spoke nuptial vows in Lathrup Community church on Saturday at 8 p.m.

The bride is the former Alberta Lou Branson, daughter of Mr. and Mrs. Rosa Nell Branson, 1840 S. San Quentin drive, Lathrup Village, and the groom is son of Mr. and Mrs. Norman Branson, Maple of Detroit.

The Rev. John D. Rose officiated at the rites that preceded a reception at Bot-fool Inn.

MAID OF HONOR was Mrs. Ann Burdette of Harborville. **Bridesmaids** were Martha Lyle Magel of Detroit, and Mrs. David H. Moore of Cleveland, both sisters of the groom. **Junior** was Parath of Northville. **Best** was Grace Bates, of Lathrup Village. **Judy Helen** of Detroit.

Flower girl was the bridegroom's niece, Alicia Edith Moore.

Best men were Ronald B. Hart of Lillstade N. Y., and others were David H. Moore of Cleveland, Robert Owen Moore of Detroit and George John Zeitz, both of Detroit and cousins of the groom and Norris E. Covert of Birmingham, VT, cousin of the bride.

CHARITABLE lace, hand cut and imported, fell over neckline.

Mary Grey's
HOSIERY CLUB

means



a lucky
13th pair for You!

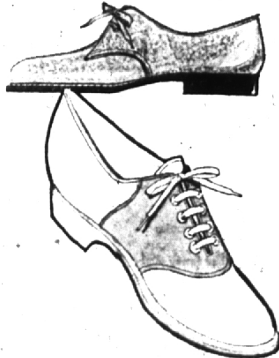
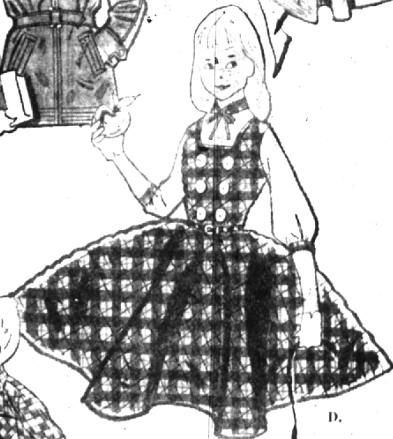
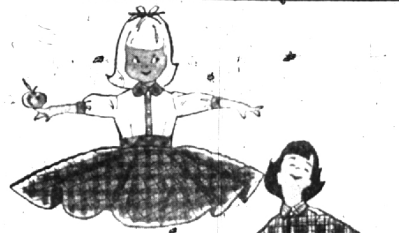
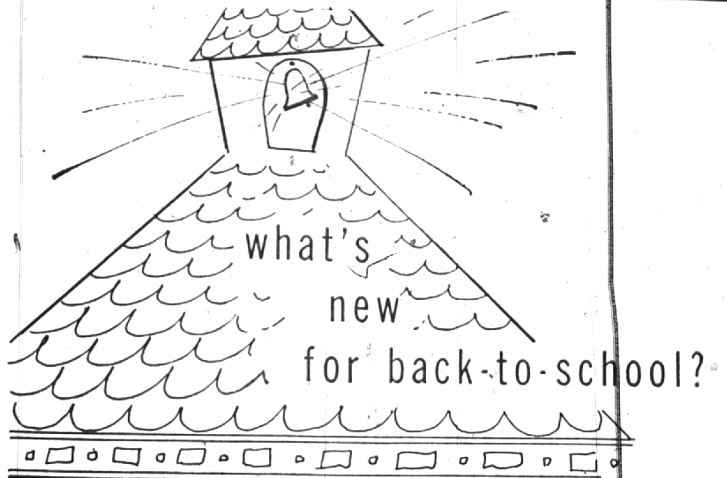
Come in today and ask about our **MARY GREY** Hosiery Club. Every 13th pair of **MARY GREY** Nylons will be given **FREE** to you when you join our Hosiery Club... you'll love these wonderful Nylons... so beautiful, so comfortable, so long-wearing.

The Glassford Shop

Personalized Service by Graduate Cosmeticians
WE GIVE S & H GREEN STAMPS

135 Pierce MI 45211

USE ECCENTRIC CLASSIFIED ADS



The A-B-C's for back-to-school scholars - all correct fashion - wise answers, each a class leader and a favorite of Mom. Bot Shop conveniently, assuredly at Jacobson's and be assured of proper fit and the very best selections.

a. AYE! IT'S BLACK WATCH PLAID - Mother's completely washable. White broadcloth shirt, plaid collar and cuffs with links. Flare zippered quilted chromspan skirt with plaid elastic inserts and plaid-edged nylon net petticoat, sizes 3 to 6x. Shirt, \$3; skirt, 3.95

b. BASIC SKIRT 'N' MATCH PLAID SHIRT - Full circle corduroy skirt, nylon net petticoat with plaid belt-matching long sleeve blouse. Camellia black or French blue, Sizes 8 to 14. Shirt, 3.95; skirt, 2.95

c. DAD APPROVED - Husky quilt lined all-wool motion surcoat, knit inner wristlets and zipper front, belted all-around or just in back. Grey, charcoal, oatmeal or blue. Sizes 6 to 16. 16.95

d. WIDE SKIRTED JUMPER AND BLOUSE - Daytime, partytime washable Black Watch duo, quilted chromspan jumper and white broadcloth blouse with plaid accents. Sizes 7 to 14. Jumper, 7.95; blouse, \$3

e. GO TOGETHER SHIRT 'N' BOXER PANTS - flannel-lined poplin, sturdy, washable, water-repellent. Boxer pants with detachable suspenders, fully-lined to match the plaid cotton flannel shirt. Charcoal, brown or navy. Sizes 4 to 7, set 5.95

f. MATCHING JACKET FOR COOLER DAYS - sturdily zippered front, same as above. 4.95

25th S. A.
ANTIQUÉ SHOW
REDFORD
Carpenter's Auditorium
2521 Grand River Ave.
SEPT. 9 - 10 - 11
12 to 10 P.M.
26 EXHIBITORS!
\$150,000 EXHIBIT
Admission 50c

2-Hour Free Parking
HAVE YOUR TICKET VALIDATED
WHEN YOU MAKE A PURCHASE
AT JACOBSON'S

STORE HOURS:
Monday thru Saturday
9:30 A.M. to 5:30 P.M.

edwards shoes for children

Edwards builds shoes with special attention to the needs of growing feet. Only soft, pliable leathers are used - leathers that feel comfortable to tender feet and flex easily with every movement. Long moulded outsoles run to the front of the arch for good support during formative years when the right kind of footing is so important to the strengthening of ankles and knees. Their combination last and famous Thomas heel allow for shoe perfection. Two from our collection.

6.50 to 8.50

Proved according to size

YOUTH CENTER - PARKING LEVEL

Selling Your Home?

- We have both Suburban and Downtown sales offices
- We can also refinance the mortgage for your buyer
- Over seventy years' real estate experience

HOMER WARREN & COMPANY
Suburban Office
4268 N. Woodway Ave.
Royal Oak
JJordan 6-3188
Liberty 9-3188

Jacobson's

BIRMINGHAM