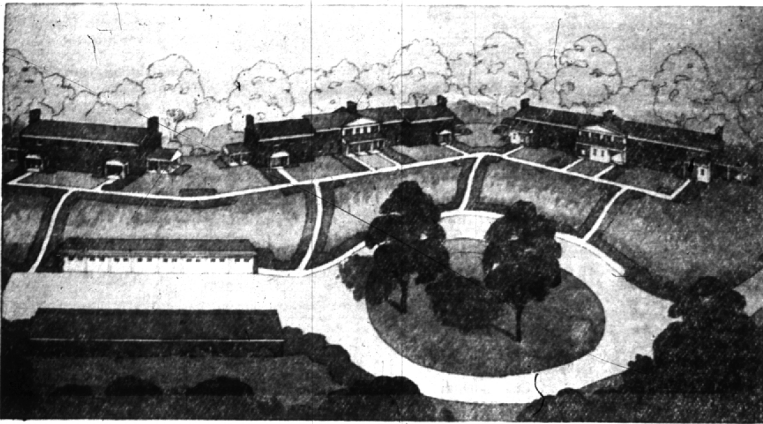


However kindly are one's intentions, the fact remains that most of us don't want advice thrust upon us, no matter how unobtrusive, advice may be less it comes to us by our own asking, for often we resist its possible helpfulness.



NEW TERRACES BEING CONSTRUCTED on Barbour Lane in Bloomfield Hills, by the Suburban Investors, Inc. of Birmingham are nearing completion and will soon be ready for occupancy. The 10-unit multiple dwelling was designed by Harry Denyes, architect, and the Buelow Construction Company is in charge of the

building. According to the developers, each unit will have three bedrooms and two baths. Screened porches, is an added feature and each will have a garage. Complete water and sewage treatment plant has been developed to serve the housing development and paved driveways and entrances to serve the group has also been installed.

held the position of tool engineer assigned to tank production.

In 1945 HE was promoted to the position of assistant master mechanic. Following a one-year special assignment with the General Motors Overseas Division at the Vauxhall Plant in England, Warner joined the staff of the Cadillac Tank Plant in Cleveland, Ohio, as assistant general superintendent.

In 1952 he was appointed general manufacturing superintendent of the Cadillac Tank Plant and in 1953 was transferred to Detroit to assist in the expansion of the manufacturing facilities at the Cadillac plant. He assumed the position of assistant works manager in March, 1955.

Warner, 46, is married and lives with his family at 5059 Shoshone Circle.

Getting ready to sell your car? Advertise it in the Classified Ads.

Special Excursion Set for Sept. 18

Another special mixed train excursion has been arranged by the Michigan Railroad club for Sunday, Sept. 18, and will operate through Birmingham.

The excursion is to Battle Creek via Durand with steam power, open gondolas for sightseers and coaches for the less baby.

The special will leave Birmingham at 8:30 a.m. and return at 2 p.m. Roundtrip fare for adults is \$3.50, children 12 and under \$2.75.

TICKETS may be purchased at the Grand Trunk Western ticket office in the Beach street depot, Detroit, or from Wes Rudolph, box 2271, Dearborn, before Sept. 7. Tickets purchased after that date will cost \$7.75 more.

There will be a refreshment car on the train. Many stops will be made for camera enthusiasts and at Battle Creek there will be a tour of the T.V. locomotive shops.

Thousands of people read The Eccentric Classified Ads. So remember, if you want to sell that hard-to-get-rid-of article, advertise it in the Want Ad section of The Birmingham Eccentric.

IT'S HOME FIX-UP TIME

NOW IS THE TIME TO START THAT—
FALL LAWN SEEDING!

GRASS SEED
5 lbs. \$1.98 Free Garden Tool With Every 5 lbs.

READY MIX CEMENT 100 lb. bag \$1.05

HARDWOOD MITRE BOX & SAW \$2.79 complete

Easy to Handle
INSULATION

- Fire proof
- roll type

4 1/2 c Sq. Ft.

SPECIAL!
2x4 FIR 8:10-12 Ft.
6c lineal foot

KNOTTY PINE PANELING
13 1/2 c Sq. Ft.

Restrict

ESTD. OF THE FAMILY SINCE 1884

LUMBER COMPANY

Open Mon. thru Fri. 8 to 5, Sat. 8 to 1

425 S. ETON MI 4-5300

E. MAPLE BUDGET TERMS

WOODWARD ADAMS RD. ETON RD. RAILROAD STATION RESTRICT LUMBER CO.

BUSINESS BRIEFS



LLOYD T. SMITH

Lloyd T. Smith To Head Analysis At Ford Tractor

Appointment of Lloyd T. Smith as manager, competitive analysis department, Tractor and Implement Division, Ford Motor Company is announced by E. S. Runley, manager of the Product Planning and Programming Office.

Smith, a native of Great Bend, Kansas, joined the division in May, 1954, as product planning analyst. He succeeds E. R. D. Neill, Jr., who has been named manager, Implement Product Planning department.

FOLLOWING service as a bomb-er pilot in the U.S. Army Air Corps during World War II, and his graduation from Kansas State college with a degree in mechanical engineering, Smith joined the Krause Flow corporation of Hutchinson, Kansas, where he served as project engineer and district sales manager.

From 1950 to 1954, he was general manager of the Krause Flow corporation of Mexico.

Smith, who is married and the father of two children, resides with his family at 142 Westchester Way.

Match Book Entry

Match books from Chas. J. Van Horn, real estate broker of 361 S. Woodward have been selected as an entry in the annual awards competition of the American Match Industry. The Match Industry Information Bureau has announced



ANOTHER BIRMINGHAM STORE is showing a new "face" to the passing public. This time it is the Birmingham Hardware, at 152 N. Woodward, owned by Orin McQuaid, and managed by Tom Cummings. Still in the remodeling stage is the store's interior, according to Cummings. New counters and floor increased selling area and assortment of merchandise, coupled with enlarged tool and electrical fixtures departments, are a part of the renovation program.

Attending Three-Day Insurance Meeting

George R. McHugh of 1281 Fourteen Mile road, a representative of the New York Life Insurance company's Michigan branch office, has been selected to attend a three-day career conference at Cincinnati's Terrace Plaza Hotel, September 8, 9, and 10.

McHugh is one of 58 first-year agents who will gather from branch offices in New York Life's east central division.

Participation in the conference is limited to first-year agents who have completed an intensive training program and have maintained a high quality of insurance sales.



HAROLD G. WARNER

Named Cadillac Works Manager

Harold G. Warner has been appointed works manager of the Cadillac Motor Car Division, it was announced today by Don E. Ahrens, general manager of Cadillac and vice president of General Motors. Warner succeeds Harold A. Barber, who retired September 1st after 33 years with Cadillac.

Warner joined the Cadillac organization in 1922 and graduated from General Motors Institute in 1922.

After holding various positions in the tool room, engineering laboratory, tool design and tool designing departments, he was appointed foreman in final assembly in 1937. During World War II he

What does TOE ROOM Mean?

WRONG— Reading too much and only type of shoe.

RIGHT— Pied Piper high toe—ample room for growth.

Toe room means more than just length. Pied Piper Shoes bring your children 3 way toe-room—room ahead for growth—ceiling room to avoid friction—and room cross-ways to avoid pinching or twisting.

This is an exclusive feature of Pied Piper distinctive design. And, remember, Pied Piper long-lasting fit and quality may reduce your annual shoe bill.

Pied Piper Shoes

are our choice as the very best for your child's foot—and for your pocket book in the long run.

WILLIAMS BOOT SHOP

115 WEST MAPLE

YOU'LL PROBABLY PAY THE PRICE OF AN OLDS . . .

... so why not MAKE IT AN OLDS !

Chances are you've always considered Oldsmobile a high-priced car. And it's true, like a high-priced car, it performs like a high-speed car. . . has all the prestige of cars costing many, many dollars more. . . but actually, you can own a big beautiful "Rocket" Engine Oldsmobile for less than some models in the lowest priced field. What's more, you'll find a "Rocket" is worth far more when you're ready to trade. And there never was a better time than now to trade your money now when Oldsmobile value is higher than ever, now when trade-in allowances are at their peak. . . now when Oldsmobile is marketing the greatest year-in-it history! So come in and try a "Rocket"! We've got one that will fit your pocket!

OLDSMOBILE

VISIT THE "ROCKET ROOM" . . . AT YOUR OLDSMOBILE DEALER'S!

SUBURBAN MOTORS CO., Inc.—565 S. Woodward

Phones Midwest 4-4440 and JORDAN 6-2364

BE CAREFUL—DRIVE SAFELY!

SCIENTIFIC LAWN FEEDING AND SEEDING

For new or established lawns the revolutionary new AGI-SPRAYER distributes fertility-coated lawn seed accurately and evenly, for quicker germination, more vigorous growth, with up to 40% less seed than the old fashioned method. Has added advantage of fertilizer treatment in same operation we use only "FERTI-ZE", the complete 14-element food so highly recommended by LOUIS BROMFIELD, famous agronomist. You save time, effort and money. SATISFACTION GUARANTEED.

WE SPECIALIZE IN LAWN FEEDING AND SEEDING, ROOT FEEDING OF TREES AND SHRUBS, WEED AND CRAB-GRASS CONTROL. Amazing low cost. Call us today for quotation.

FertiZE-Bloomfield Lawn Culture
DI 1-3860

SHEER PERFECTION

IN A PORTRAIT BY . . .

bill williams LI 3-4180
1107 Crooks Rd. at Main Royal Oak
Photographer