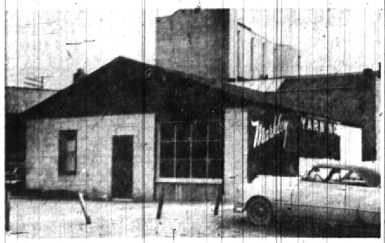


The eternal song that asks you to count your blessings contains much wisdom in it. Because it is more painful to sit on a sack than a mountain top, it is well, why not people, evaluate the sack for what it is, and call the mountain top "blessings"?



ARCHITECTURAL SKETCH (above) reflects the type of commercial development planned to the west of Kroger's on E. Maple, by Barton-Malow Construction Co. of Detroit. Carl O. Barton of that firm said this

## BUSINESS BRIEFS



THE BARN-LIKE STRUCTURE (above) while not too attractive at present should serve wonderfully when remodeled for Markley's Yarn Nook which is relocating.

### Markley's Yarn Nook To Locate on E. Maple

Maple avenue came closer to losing one of its long-time business proprietors when Mrs. Mabel M. Markley was allowed 30 days to vacate after change of ownership of the store which for five years has housed Markley's Yarn Nook at 247 W. Maple.

"I could quit but I don't want to quit," said Mrs. Markley, who explained that she cast about about Maple and in outlying areas for a new location. "Nothing seemed to suit me," she said. "Either the rent was too high for this type of business or I couldn't become enthused over the location."

MRS. MARKLEY finally settled on what had once been an old sawage on E. Maple behind the Kroger store, which has had some remodeling work and will see much more.

Mrs. Markley has operated the Yarn Nook in Birmingham for 14 years, and plans to continue in the 40 x 30-foot building with expansion of present lines, and possible addition of new departments.

One department for sure, a trimming department, will be established. Besides all types of yarn the Yarn Nook also handles weav-

### Heads Competitive Analysis Dept. At Ford Tractor

Appointment of Lloyd H. Smith as manager, competitive analysis department, Ford Motor company, is announced by E. S. Burnley, manager of the product, planning and programming office.

### D. J. Healy's Store Has New Manager

New manager of D. J. Healy's Birmingham branch at 423 W. Maple is Mrs. Delores Green of Detroit, who has managed several of the Healy branches.

### Edison Locates County Service Center in B'ham

A Detroit Edison central communication system and customer service center is being set up in Oakland county.

### Beatty Appointed Polk Company VP

William H. Beatty, president of R. L. Polk & Co., announced last week that by action of the board of directors, William H. Beatty, 559 Half Moon, Bloomfield township, was appointed vice president and general manager of the direct mail division.

### Elected To AIA

Roland E. Smith of 4159 Meadowlands drive, Bloomfield township, has been elected to the executive board of a member of the American Institute of Accountants, national professional society of CPAs.

### Smile A Minute

If people do not know the good you have done it is a waste of time to tell them.

### Employment Service Opened by Credit Bureau in B'ham

Wayne L. Combs, manager of the Birmingham Credit Bureau, announced a new service of the credit bureau to be known as the Birmingham Employment Service.

### Edwards Joins Mutual Benefit

Edward W. Brehm, Jr., 18250 Devenshire, is receiving nationwide recognition this month by being featured in a full page advertisement in the Sept. 16 issue of "National Underwriter," one of the country's leading insurance magazines.

### Brehm Joins Mutual Benefit

BREHM joined Mutual Benefit in Jan. 1954, and in that year qualified for the President's club, a group of the company's leading agents.

### THE V. R. CRAMERS

of 15941 Amherst, W. Beverly, see the sights South of the Border. Cramer, national manager of Chevrolet Motor division's business management department, was host to nearly 100 Chevrolet dealers and their wives in Mexico City.

### Employment Service Opened by Credit Bureau in B'ham

Wayne L. Combs, manager of the Birmingham Credit Bureau, announced a new service of the credit bureau to be known as the Birmingham Employment Service.

### Volunteer Bureau Elects Officers

The Central Volunteer Bureau of Pontiac, which serves the north Oakland County communities of Birmingham, Bloomfield Hills, Pontiac, Waterford and others upon request, celebrated its first birthday Thursday when its advisory board met at the YWCA in Pontiac for election of officers.

Other members of the advisory board include Mrs. Stanley Carter, Bloomfield Hills; Mrs. Robert Groves, Franklin; and Mrs. William Rosso, Birmingham.

AS IN MANY areas across the nation, the organization was founded to keep abreast of current volunteer needs of the health, recreation and social-service agencies, both public and private, and to recruit and channel volunteers to fill these needs.

We Heard It Said By: F. N. TARIK, owner Kingsley Inn, Bloomfield Hills: "Fish like salmon can be served very deliciously and attractively with a marguerite or hollandaise sauce. A marguerite sauce, is simply a hollandaise sauce with scallop, oyster or shrimp, and a slice or so of truffle. Truffle is black and anything like a nutmeg, and just a slice is enough for garnish. The seafood is in the sauce, so you discover it as you eat the salmon."

**Our Fall Prices**  
are lower than  
the bottom of a well!  
GENUINE SAVINGS IN EVERY DEPT.

Genuine Bargains In  
LIVING ROOM  
BEDROOM  
DINING ROOM  
Suites and Open Stock Pieces

REMEMBER—YOU OWE IT TO YOUR  
POCKET BOOK . . .  
Never—Never  
Buy Any Furniture Anywhere  
Until You Check Our Price Tags

WE GIVE GOLD BELL GIFT STAMPS

**Har From HI-WAY FURNITURE MART**  
1532 WOODWARD AVE., BIRMINGHAM, MICH.  
4 BLOCKS N. OF I-4 MRD. . . . . Midwest 4-1410  
Open Thursday, Friday and Saturday Till 9 P.M.  
EASY TO PARK . . . JUST DRIVE UP

# TIME TO GO Pontiac

# for a good deal and a good deal more!

**Pontiac gives you more beauty, size and power—and record-breaking sales mean record-breaking deals!**

When we say a "good deal" we're being plenty conservative. Actually, our deals are terrific—and here's why.

Right now, we're reaching for a new sales record in September to match the record-smashing sales of the months past.

We're going all-out to get it done—trading with a freeness we've never touched before. In fact, until you get our appraisal, you'll have no real idea how much your present car is worth.

And that line about "a good deal more"—that's another understatement. It's a matter of record that Pontiac combines greater beauty, size, power and stability than cars priced hundreds of dollars more. It's a tremendous bargain even without benefit of a special deal.

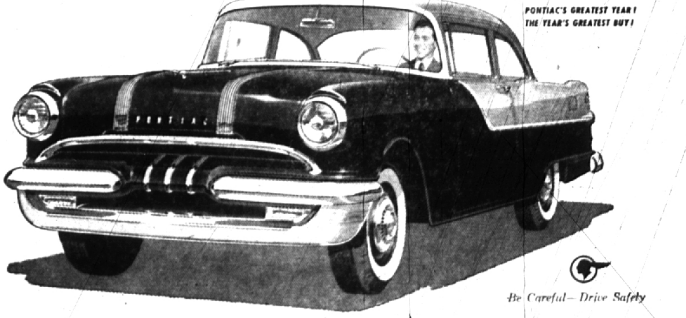
It's the most beautifully distinctive car in America—bar none!

It's a big car! That rugged, shock-proof chassis has a 122- or 124-inch wheelbase—just what it takes for a smooth and steady ride.

And the Strato-Streak V-8 is right out of the future—the newest and most advanced automotive power plant of them all with the most exciting performance you have ever enjoyed.

Come in for the rest of the facts—and the amazing figures that prove how easily you can own a high-powered, high-styled Pontiac.

Make it soon. There's a limit to how long we can keep trading at this rate.



**Pontiac**  
PONTIAC'S GREATEST YEAR!  
THE YEAR'S GREATEST BUY!

Wilson Pontiac-Cadillac, Inc.  
1350 North Woodward Avenue  
Phone Midwest 4-1930 and JORDAN 4-6655