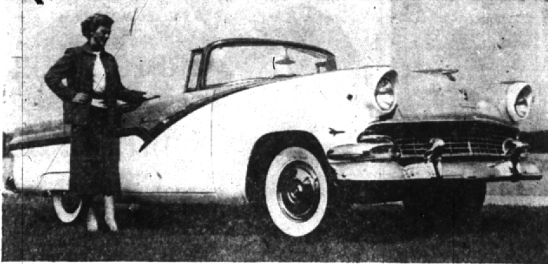


Just as one is required to clean his own body, to wash the clothes he wears, so are we all required to eliminate our thoughts of ideas that are not health-producing. Only the person who "thinks loftily" ever reaches the heights.

Ford and Mercury Dealers Prepare for 1956 Models



TOMORROW, the 1956 Ford will be on display at Harold Turner, Inc., 464 S. Woodward. The Sunliner convertible (above) is one of 17 new "body" styles Ford is bringing out with, among other changes, widened and lengthened grille and parking lights worked into chrome housings which extend around the sides of the fenders.

LOWER SILHOUETTES are featured in the 13 1956 models which Mercury will present to the public Sept. 29, at Bob Frost, Inc., 850 S. Woodward. The Monterey coupe (above) is one of three series which includes the Montclair and Custom-Mercury, which are powered by the new Safety-Surge V-8 engine.

Model Home Open To Public Friday

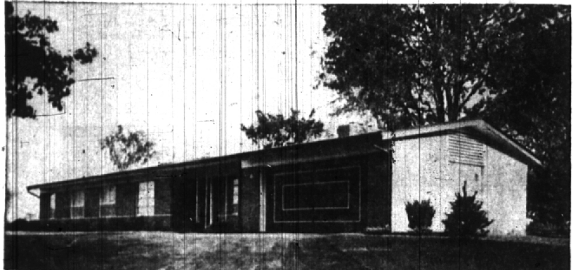
This year's version of the Better Homes and Gardens 1956 Model Exhibit home, erected and built by the Frankel Brothers, will be officially opened for public inspection Friday by Mr. and Mrs. Russell Pickering.

The model is located in the new Franklin Woods subdivision, property which had been in the Pickering family for four generations, since 1876 when Cooper Pickering took over the original farm.

The model is at 4625 Pickering road, midway between Fourteen and Fifteen Mile roads. The exterior of ruffled pink Roman brick with white louvered window details and charcoal facade sets the tempo for the interior colors, repeated in pink, black and white.

THE HOME features three bedrooms, two full baths, a combination living dining room, family room, kitchen, utility room and completely planned outdoor living area.

The kitchen designed and installed by the research division of General Electric is complete with built-in ovens, stove tops, hanging wall refrigerator and freezer, dishwasher, disposal and work center. Bedrooms and baths are in a private wing, with entrance from the family room. The master bedroom opens out through 6 ft. glass sliding doors onto a private porch and patio screened by an unusual metal and plastic exterior garden wall.



BETTER HOMES AND GARDENS' model home, located at 4625 Pickering road, Franklin Woods, Bloomfield township, between 14 and 15 Mile roads, was built by Frankel Brothers of Royal Oak. The home was opened to the public last Friday.



LIVING ROOM in the Better Homes and Gardens' model home in Franklin Woods, as well as the other rooms in the ranch-type house, was furnished by Robinson Furniture Co., a Detroit firm which has an outlet at Northland Shopping Center in Southfield township.

Ranch Homes Inc. Opens New Offices

Ranch Homes Inc., one of the leading home building firms in the Birmingham area, last week moved into their new office building at 625 Hunter Blvd.

Visitors at a private showing of the offices last week toured the modern two-story structure with painted brick exterior on salmon white, with functional use of California redwood and large glass expanses.

The firm is owned by three Mackey brothers, Ted, design and sales; Tom, construction and Harry (financing).

A PIONEER in ranch home building, the company, with realtor Fred Blockman, Co., ventured into subdivision building at Chermwood Hills, just north of Birmingham.

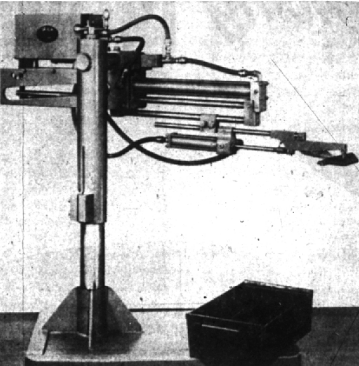
The Mackeys strive for two things in home building: 1. low price with quality construction and 2. fast and a desirable area.

Ranch Homes also developed Alta Loma in the Farmington area, and, according to carry the

Alemite Corp. Will Locate in B'ham

Alemite Corp. of Michigan has purchased a 2 1/2 x 200-foot site at Manor and N. Woodward on which they plan to locate their office headquarters, according to Fred Block, head of Max Brock & Co., licensed distributor of Stowack Warner Corporation's alemite products. Alemite Corp. hopes to construct the office building in 1956.

BUSINESS BRIEFS



SAHLIN ENGINEERING CO., INC., of 750 W. Maple, this week introduced a redesigned portable press unloader (above) which they believe will be ideal for job shop use because of its flexibility.

Introduce New Press Unloader

A completely redesigned portable press unloader with a new swiveling feature for side or back unloading was announced today by Sahlin Engineering Company, Inc., 750 W. Maple.

The unloader is ideally suited for job shop use because it can be moved quickly from press to press and is easily adjusted for different jobs. It is also recommended for unloading stamping presses where the gearing prohibits the mounting of standard overhead iron bands.

The new unloader, known as the Series 3000 Iron Hand, has the same jaw, air cylinder and controls as the standard overhead iron hand used throughout the automotive and appliance industry to unload large stampings.

THE ENTIRE unit is mounted on a heavy steel base, on wheels, and can be rolled to a press. Once there, it can be adjusted up or down on its vertical post to suit the die height, and swiveled into unloading position. Since the jaw travel is in a straight line, the unloader can remove small parts at high speeds.

The operation of the Series 3000 unloader is similar to the overhead Iron Hand, except that the jaw travels in and out on a straight line. After a ram completes its down stroke, the hand moves into the die and grips the stamping. When it has clearance, the jaw lifts the stamping, moves back out of the die and drops the stamping in a tote box. Then it returns to its original position to await the next cycle. A variety of jaws are available.

Appoint Bob Smith Higgins & Frank Shoe Dept. Head

Robert Smith of Detroit, has been named manager of Higgins and Frank's Birmingham branch in the Wabash Bank Building, to replace Gene Lewis who left for Syracuse, N. Y. to serve as the New York Freeman Shoe Co. wholesale representative of

Smith, married, has been in the shoe business for 15 years and was brought from Detroit's Higgins and Frank store, according to Martin Frank, manager of the Birmingham store.

Lewis, formerly of Royal Oak, had been manager of the Higgins and Frank shoe department since the branch office opened here three years ago.

Reveal Architect Contest Winners

The American Institute of Architects, Detroit chapter has just announced the results of its 1955 Honor Awards program in which 12 projects in the Detroit area are recognized as having attained excellence in architectural design.

Three of the four projects receiving Honor Awards were designed by local architects. Girls' dormitory and dining hall at Drake university, Des Moines, Iowa; Euro Saarinen & Associates, Bloomfield Hills.

Central restaurant building, General Motors technical center, Warren; Eero Saarinen & Associates; architects; Smith, Hinchman & Grylls, Inc., architects and engineers.

The J. L. Hulston company's Northland shopping center, Southfield township; Victor Gruen Associates, Inc., architects and engineers.

Among those receiving Awards of Merit was First Baptist Church, Flint; Swanson Associates, Inc., architects.

New Bowling Alley Opens Next Week

Scheduled for opening in about one week is Northwood Lanes bowling alleys at 234 Hunter Blvd., under the ownership of Frank Blockstein Sr. of Dearborn.

Blockstein is organizing league bowling for his 12 alleys, and all bowling will be under the management of his son, Frank Jr.

The Dearborn man is former owner of Mercury Lanes in that city.

BAMBOO DRAPERY

SHADES CORNICES

\$5.00 up
Per
Panel

Columbia LATTISHADES LATTIS DRAPES WOVEN WOODS

... soft appearing, long wearing draw drapes of imported matchstick bamboo ... expressive of the new trend in window treatment ... suitable for any interior ... assortment of attractive colors.

RATTAN WROUGHT IRON FURNITURE
by Molla, Ficks Reed, Admiral, Miller, Meadowcraft

Our Counselors will Call With Materials, Advice and Samples, Day or Night.

RUSH DELIVERY

LINCOLN 6-3311

LINCOLN 3-4656

Quinn's inc.

2875 N. WOODWARD — 3 Blocks South of 12-Mile

Open Thursday, Friday Evenings

Service for 29 Years

Want Ads cannot be accepted after 5 p.m. each Tuesday.

BEST DEAL IN TOWN!

SAVE \$90.00

NO TRADE-IN NECESSARY!

Complete HOME LAUNDRY

BOTH FOR \$299.90

Automatic Hotpoint WASHER and DRYER

BOTH FOR AS LITTLE AS \$2.55 A WEEK!

MILKS APPLIANCES

1493 S. Woodward LONG, EASY TERMS Birmingham