

Depth Problem At Southfield

1955 Outlook Good Despite Backfield Losses

THE 1955 football team of the unbeaten freshman squad that played together when football started at Southfield high school this year.

Coach Monte Charles has 13 lettermen as the nucleus of the 1955 squad, but depth will be a decisive factor against the Jays.

A sophomore is available for the left half position, but the right half position has not been filled as yet. The back on offense and the back on defense are also available, but the line on defense is a problem.

DEPTH is the problem. The lineup has to be filled as the best in three years.

"We have a little more depth, size and speed on the line, but that's no comparison with any two other teams we have had here at Southfield," said Charles.

Outstanding returner is senior Sam Mandarovich, a 4-11, 135 in and at 185 pounds who was an all-conference selection last year.

A **TWO-WAY** player, Mandarovich is rated a top flight defensive player and the best pass receiver on the team.

This year coach Charles plans to use the big end's running power by using him whenever possible at the left half position.

At the other end post is Len Lamb, a 4-11, 210 in junior who did not letter but is expected to take over regular duties offensively this season.

THE BACKFIELD has been hurt with the losses of quarterback Jerry Gatti and halfback Fred Courville and Dave Jurko.

John Myllanen, a 195-pound junior who lettered as an end last year is being considered for the signal calling duties by Charles. He did the punting last year and is rated a fair passer.

A pair of defensive backs may get the call for offensive duties. Dick Morgan and Ron Brewer are the candidates leading the half-back race.

Morgan at 170 is a senior, and Brewer also 170 is a junior who did lettering chores last year. Fullback is another problem. All-time guard, big Bern Muscovich



DIRECTING the athletic policies at Southfield high school is athletic director Robert Hall.

LINE strength shows Mike Salsinger a 6-1, 200-pound tackle returning for his senior year.

Another 190-pound senior who has seen regular duties since his freshman year is Larry Kevelighan, a rugged defenseman.

Sophomore Zardner, a 240-pounder, and center Clayton Smith at 190 are other first line prospects.

Big line loss was the graduation of tackle Bob Quirk, who was also Southfield's shot put artist in the spring.

In its first year of football in 1953, Southfield posted a record of 4-3-1 under Charles, and last year had an enviable 6-2 mark.

ONLY TEAMS to beat the Jays in league play have been Berkley and Van Dyke, and this would be the year for Southfield to cop the title.

Marked Men

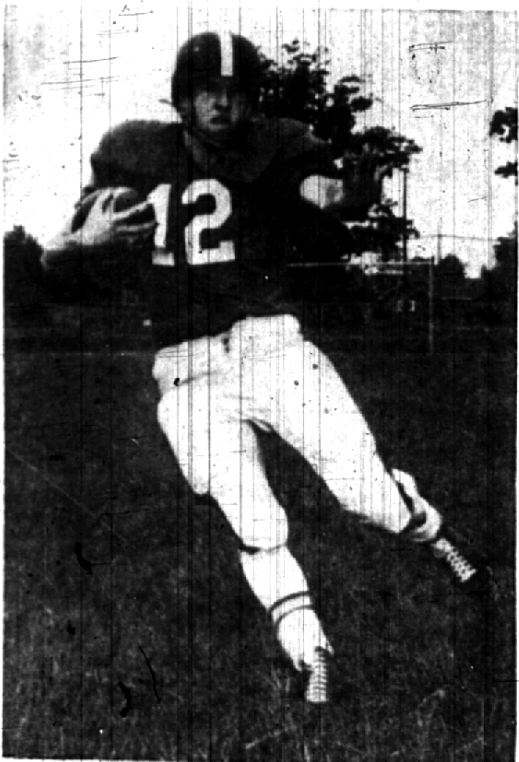
Football players first began wearing numbered jerseys in 1913, with Glenn "Pop" Warner at Pitt given credit for its start.



THE COACHING STAFF at Southfield high school, Will Stejnke (left) and Cecil Foote (right) along with head coach Monte Charles are hopeful of the 1955 grid prospects.

SOUTHFIELD SCHEDULE

DATE	OPPONENT	PLACE	TIME	1954 SCORES	
				SHS	OPP.
Sept. 16	Birmingham	Away	8:00 p.m.	0	6
Sept. 23	Wilbur Wright	Away	3:30 p.m.	41	0
Sept. 30	Berkley	Home	3:30 p.m.	7	21
Oct. 7	Farmington	Home	3:30 p.m.	21	0
Oct. 14	Walled Lake	Home	3:30 p.m.	25	7
Oct. 21	Van Dyke	Away	8:30 p.m.	19	0
Oct. 28	Waterford	Away	3:30 p.m.	13	12
Nov. 4	Redford Union	Home	3:30 p.m.	13	0
				Won 6	Lost 2

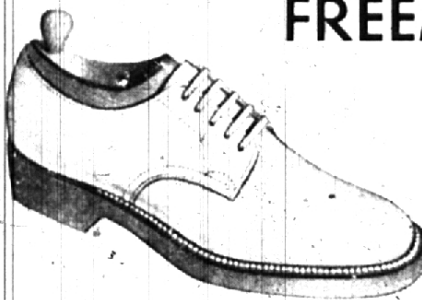


RIGHT HALFBACK Dick Morgan, a 170-pound senior who played mainly on defense last year, will get a crack at the offensive unit at Southfield this season.

FIT for THE CAMPUS



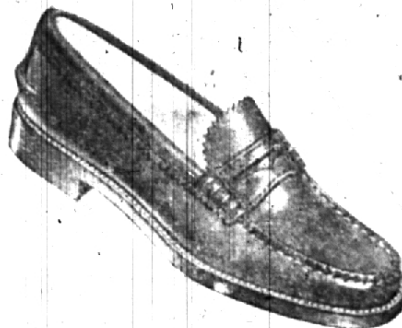
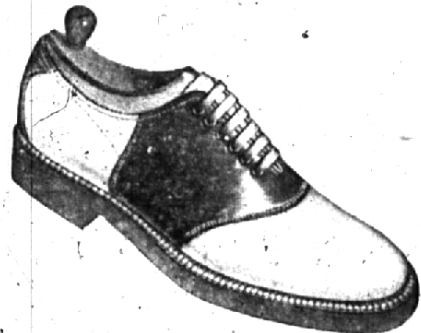
Wonderful Feeling FREEMAN'S



Genuine White Buck, Red Rubber Sole \$12.95

Saddles . . . Black and White or Brown and White \$11.95

Genuine Moccasin, with hand-sewn vamp, Brown or Black \$11.95



Tops in Popularity . . . These styles will take honors on any campus. They're crafted by Freeman in leather that is really durable . . . comfortable, too!



WABEEK BUILDING
BIRMINGHAM