

# Taking a Tour of Birmingham's Two New Fire Stations



**East Side** A two-story building, with spacious second floor living quarters comprises the station on Adams at Bowers.

## Keystone Modern Facilities At Chesterfield and Bowers

Story and Photos by Bruno L. Kearns

The mode for modern living can be found in Birmingham's two new fire stations.

There is a noted difference from the drab old fire halls of yester-year.

Walls are painted in pastel shades, with plenty of window space to bring the sunlight into more roomy living quarters.

The dormitories in both stations can accommodate a total of 40 firemen without crowding the beds. In the old city hall there were 18 beds crowded in a 16-bed dorm.

**LIVING QUARTERS** at the Bowers-Adams station are all on the second floor, while at Chesterfield, similar but smaller facilities are on ground level next to the fire truck section.

Kitchens at Bowers halls are the housewife's dream. Plenty of built-in cabinet space with the best in refrigeration, appliances, cooking ranges and sinks along with spacious dining and lounge rooms.

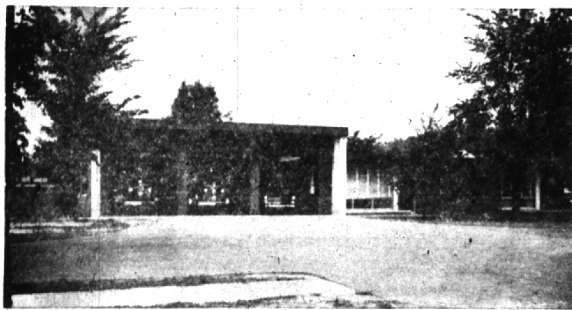
**AT THE Bowers station**, two slides, one out of the lounge and another out of the dormitory, are the latest innovations to scurry the firemen into the truck hall.

Bowers is the dispatch station, taking all incoming fire calls. Offices of assistant chiefs Stanley Pepperell and Stanley Church are at Bowers, with Chief Park Smith in his office at Chesterfield.



**Land Ho!**

Down comes Paul C. Nielsen on the "curry" slide at the Bowers station.



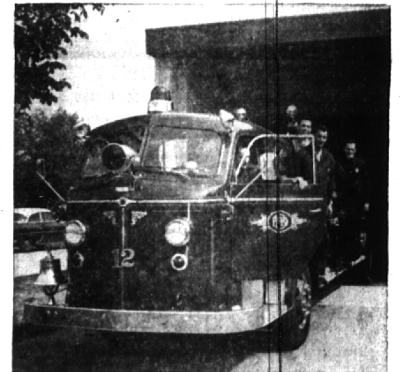
**West Side** First of the two new fire stations at Chesterfield and W. Maple was opened in May. It is a one-story building.

The Birmingham Eclectic  
*Reaching out a helping hand to help another is a merciful activity that does more than appear on the surface. Being helpful to others is, indeed, merely part of the pattern God intended you to weave of your life.*  
**Section 3**  
 Thursday, Sept. 1, 1955



**Lounging**

Relaxing in the Bowers lounge are (left to right) William McTigue, Jerry Tewilliger and Lt. C. G. Nunnally.



**New Home**

Into the new home at Chesterfield goes the ladder truck.



**CHOW TIME**

William McTigue cooked the first meal in the modern Bowers kitchen.

Here the crew feasts on the initial bunch in the dining hall.



**Plenty of Bunk Space**

Plenty of room in the sleeping quarters at both stations. Each has a dormitory for 20 beds.