

Mechanical Nose Useful In List of Electric Aids



FIRE MARSHAL SCOTT GUS MITCHELL
(Checking sewer with Explosimeter (Eccentric Photo))

By BRUNO L. KEARNS
Mechanical devices such as the electric eye and Amanda automatic answering devices of Bell Telephone, have long been used, not as replacements, but as convenient substitutes for human senses.

On each of Birmingham's fire-trucks, a piece of equipment called the "explosimeter" has been the mechanical nose of the fire-department for the past six years.

THIS SENSITIVE instrument can detect the presence of all types of gases or vaporizing fluids, and since its invention "the meter has cut down the hazards for firemen and citizens alike," according to fire chief Vernon Griffith.

"It is not a new instrument, but improvements in using the explosimeter have made the occupation of firemen safer," said the chief.

A RECENT test with the explosimeter was made with sewer gas, which according to Russ Grinnell, superintendent of the Birmingham disposal plant, is highly explosive when ignited.

Grinnell pointed out that very few people realize sewer gas is highly inflammable. In fact the disposal plant itself is heated with sewer gas.

Two thirds of sewer gas is composed of methane, which itself is used for fuel and is explosive.

THE EXPLOSI-METER showed during this recent test that the sewage lines were out of explosive range because of the many street openings and catch basins. "There is no danger of existing sewer gas collecting as long as enough openings exist," said Grinnell.

The fire department uses the "mechanical nose" during all fires which may cause line leaks or sewage difficulties.

New copy submitted early is necessarily given preference, so the "early bird" usually gets the space.

COMMUNITY HOUSE CALENDAR

- | | |
|--|--|
| <p>Thursday, October 6
 4:30-8 p.m.—Buffet Dinner (re-creations)
 6:30 p.m.—Business Women's Dinner
 8 p.m.—Oakland Citizens League
 8 p.m.—Painting Class
 Friday, October 7
 9 a.m.—Silver Class
 10:30 a.m.—Senior Workshop
 p.m.—Enameling Class
 p.m.—Writing Class
 Saturday, October 8
 10 a.m.—Painting Class
 10 a.m.—Browning Girl Scouts</p> | <p>Monday, October 10
 9 a.m.—Sculpture Class
 10 a.m.—Girl Scout Board Meeting
 10 a.m.—AAW Board Meeting
 Noon—Rotary Luncheon
 12:15 p.m.—Sewing Class
 1 p.m.—Sculpture Class
 3:15 p.m.—Troop 211
 3:30 p.m.—Troop 212
 6:30 p.m.—H-12 Dinner
 7 p.m.—Altrusa Dinner
 7 p.m.—Sculpture Class
 7:30 p.m.—Babe Ruth League
 7:30 p.m.—Design Class
 8 p.m.—Cookroom Meeting
 8 p.m.—Community House Board Meeting
 8 p.m.—Bridge Class
 8:30 p.m.—Stamp Club
 8:30 p.m.—Adult Dance Class
 Tuesday, October 11
 9 a.m.—Military Class
 Noon—Exchange Luncheon
 11:30 a.m.—Catholicism Group
 Luncheon
 1 p.m.—Bride Class
 1 p.m.—Creative Pottery Class
 7:30 p.m.—Painting Class
 8 p.m.—Haltman's Party Planning Committee
 8:30 p.m.—Kiwanis Club Dinner
 7 p.m.—Birmingham Credit Women's Association Dinner
 7 p.m.—Sewing Class
 7 p.m.—Creative Pottery Class
 7:30 p.m.—First Aid Class
 8 p.m.—AAW Meeting
 8 p.m.—St. Columba's Meeting
 8 p.m.—Oakland County Engineering Society Meeting
 8 p.m.—Painting Class
 8 p.m.—Michigan Sports Car Club
 Wednesday, October 12
 9 a.m.—Silver Class
 9:30 a.m.—Intermediate Girl Scout Leaders Training
 Noon—Lion Luncheon
 1 p.m.—Bride Class
 1 p.m.—Enameling Class
 1 p.m.—Painting Class
 3:15 p.m.—Troop 257
 3:30 p.m.—Painting Class
 7 p.m.—Silver Class
 7:30 p.m.—Stock Market Class
 7:30 p.m.—Holy Name Boy Scouts
 8 p.m.—Rehearsal Visitation
 8 p.m.—Duplicate Bridge
 8 p.m.—Jr. Chamber of Commerce Meeting
 8 p.m.—Greenfield Beverly Improvement Association
 Thursday, October 13
 9:30 a.m.—Painting Class
 9:30 a.m.—Gardening Class
 9:30 a.m.—Blind Practice
 11 p.m.—Tulane Reservations Class
 2 p.m.—Birmingham Musicale Meeting</p> |
|--|--|

★ Smile A Minute

Profanity is a form of convincing argument, except to the man who practices it.

SCREENS and STORM SASH PLESH DOORS

- Combination Doors and Windows
- Cupboard Doors and Drawers
- Plywood—Kite Ply Lumber

WOODCRAFT CO.
1184 Grant MI 4-0124

for Safety's Sake

DRIVE WITH
Firestone TIRES
BOB ADAMS SHELL SERVICE
MI 4-9750
Hunter at Maple

CUSTOM LAMP SHADES

- PICTURE FRAMING
- OLD PRINTS
- LAMPS WIRED

Ruth Haigh

165 Pierce Open 9 to 5 Daily MI 4-2002

MEN'S BUSINESS SHIRTS

BEAUTIFULLY LAUNDERED
CELOPHANE WRAPPED

4 for 96c

In Birmingham visit our store at 361 E. MAPLE

CASH AND CARRY OR PICK-UP AND DELIVERY
ENTERPRISE 6655

Ridley
CLEANERS

You will find many bargains in The Eccentric Classified Columns.

KRESGE'S



Like to be Surprised?

... Then try a pair of Our LANOLIZED NYLONS

- They're Kitten Soft—and slide on so easily—so smoothly—not like ordinary hose—feel cool on feet.
- Seams Stay Straight—because the soft smooth finish prevents seams from twisting.
- They Last Longer—Snags and runs are rare because the smooth texture slides instead of catching and pulling.

You'll find just the pair proportioned to fit your legs and the shade that flatters them most. These extra-sheer hose are accented with alluring overtone heels. These lanolized nylons with our famous Nylcrest label offer so much more than ordinary hose and are priced no higher. Just...

2 prs. \$1.89
98c PR

WEST MAPLE at HENRIETTA in BIRMINGHAM

KRESGE'S for the MOST of the BEST for the LEAST

GET THE WHITE THAT'S RIGHT LOOK at this FREE OFFER

BUY 2 GALLONS or more A. Q. HOUSE PAINT and

get ABSOLUTELY FREE 18-Pc. Moderntone Dish Set!

It's easy to select the white that's right for you—Here's how—

- 1 Do you want a long-lasting, self-cleaning white that stays white? Use New Era Outside White No. 122.
- 2 Does your home need two coats? Then get extra protection with the white that primes, hides and seals—New Era Balanced Primer No. 157. Use with Outside White No. 122.
- 3 Do you want to repaint—with one coat only? Then you require a white paint with extra-high hiding power—New Era One Coat Outside White No. 172.
- 4 Do you want to do an exterior trim job? Use a white that "stays put" that will not streak either wood or masonry—New Era Trim White No. 20.
- 5 Is your home in an industrial area—where it needs extra protection against smoke and fumes? Then you need New Era Fume Resisting White No. 163.

A. Q. ALL PURPOSE BLACK—JET BLACK SYNTHETIC ENAMEL USE ON WOOD OR METAL INSIDE OR OUT



A. Q. ALL PURPOSE METAL PRIMER RESISTS RUST

\$1.83 Qt.

\$1.63 Qt.



A. Q. MASONRY PAINT alkyd OIL BASE for

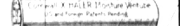
- STUCCO
- BRICK
- CEMENT SHINGLES
- CINDER & CEMENT BLOCK

EASY TO APPLY!

\$5.69 Gal.

IS PAINT PEELING YOUR TROUBLE?

Use



Special 21c

COLOR CONDITION YOUR HOME FOR THE MONTHS AHEAD and Remember: YOU CAN'T BUY BETTER PAINT THAN A. Q. HOUSE PAINT

ACME QUALITY PAINTS Inc.
COLOR IS OUR BUSINESS

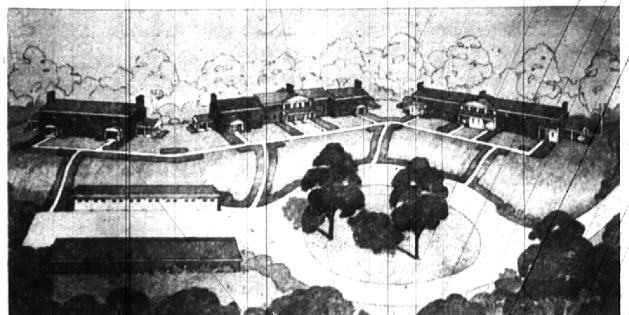
FREE COLOR SERVICE • OPEN UP A CHARGE ACCOUNT • FREE DELIVERY

OPEN FRIDAY EVENINGS

163 N. WOODWARD

MI 4-8500

Gracious Living - Superb Location



LOCATED IN BLOOMFIELD HILLS ON BARBOUR LANE OFF BARDEN ROAD

These luxurious two and three bedroom terrace apartments with one and one-half and two and one-half baths and additional lavatories are now available for lease. Well planned for gracious living, they include:

- Spacious living rooms with natural fireplaces
- Thermopane picture windows
- Large screened porches
- Complete kitchens with formica and GE Disposals
- Twin-size bedrooms each with two large closets
- Completely tiled baths with built-in vanities
- Finished basements with tiled floors
- Gas heat designed for complete air conditioning

• Additional garages for the two-car family

SUBURBAN INVESTORS, INC.

298 S. Woodward Avenue

Midwest 4-1000