

Youth Groups Plan Fourth 'Workday'

Junior and senior high groups of the Birmingham Congregational church have their fourth "Workday for Christ" set for Oct. 22. Dave Lindley, senior high president, said the program is a part of the "Missions Unlimited" project. Money earned by groups during the day are earmarked for mission work. Specific plans are for American Indians this year. The group meets for breakfast at the church when visiting mission workers, the Rev. J. R. E. Grandison, South India, and Miss Helen H. Smith, formerly of China, will be guests.

Following a brief worship, the groups will go to their work. A luncheon will be served at noon in the church. Special services Sunday will be held at the church. Church News deadline is 5 p.m. on Thursday.



TALKING OVER THE pantry shower for sisters at St. Hugo of the Hills Catholic church are Mrs. James Tomlinson, Mrs. Zac Endress and Mrs. Philip Monaghan. The shower and tea are to be held there on Oct. 25, sponsored by the Altar society guilds and open to all members.

More Than a Ton Of Peanut Brittle For Church Bazaar

A small group of women at the First Methodist church are fully aware that Christmas is coming. They are busy with sugar, peanuts and cooking, stockpiling the one-ton-plus supply of peanut brittle for the Nov. 13 bazaar, sponsored by WSCS units.

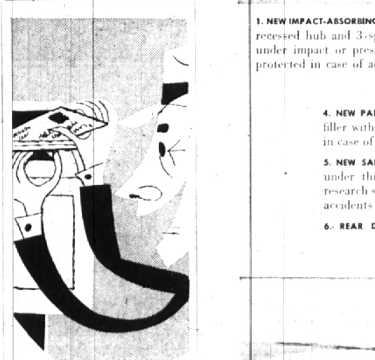
Others are occupying their time with traditional bazaar features and thinking up new items such as the dried flower arrangements and the packaging of china wares for the giant stand. Mrs. E. E. Honshaw, chairman, said her workers are introducing these two features in addition to the customary "dishes" plans.

IN THE PANTRY, Mrs. Harold Chaik's committee is stocking jelly pies, jams, chili sauce and other already popular fresh orange marmalade.

The snack bar will serve between 11:30 a.m. and 1:30 p.m., again for an hour beginning at 5:30 p.m. in the direction of Mrs. S. J. Lang. Home made pies will be the dessert feature.

Decorations for the entire bazaar are in charge of Mrs. W. W. Drescher.

BIRMINGHAM CAMERA SHOP
168 So. Woodward
Phone Midwest 4-0510
If You Don't Know Cameras—Know Your Dealer
SERVING BIRMINGHAM for 17 YEARS



WITH THIS PLAN...
The Nearest Mail Box is a Teller's Window!

Banking by mail is fast, safe, and convenient... and more people are making use of it every day. Why don't you? Detroit Wabeek Bank and Trust Company plan making banking by mail from your home or office as easy as writing a postcard. And the service is as friendly and personalized as it is right in the bank.

Come in and let us show you the ease and convenience of using this time- and trip-saving plan.

DETROIT WABEEK
BANK AND TRUST COMPANY

Member of Federal Deposit Insurance Corp.
WABEEK BUILDING
BIRMINGHAM, MICHIGAN

Methodists Schedule All-Church Meeting

First Methodist church's annual church-wide retreat is scheduled for Oct. 24, beginning at 8 p.m. with Coy Eklund leading a brief devotional service.

The Rev. Arnold F. Runkel, D.D., will outline church goals, followed by a brief quarterly conference. A portrait of Dr. Runkel, will be presented by the church at this time.

After the 8 p.m. buffet supper, the Rev. Jewell Smoot, D.D., Strathmore Methodist church, Detroit, will speak.

Christian Science Is Always Useful, Speaker Says Here

The great appeal of Christian Science is that it is usable at all times and under all circumstances. Jules Cern of New York City told an audience here last Friday, under First Church sponsorship.

Today, as in Christ Jesus' time men and women are finding spiritual understanding of God's address of practical help in coping with pain, fear, and discords of every kind," he said.

"Spiritual healing, as understood in Christian Science, is based upon the inspired Word of the Bible," Cern said.

"JESUS DID not pray that man should become spiritual and per-

KRESGE'S Ready Made RAYON TAFFETA

COSTUMES for HALLOWEEN

10 Styles (6-14)

Private Gypsy Robot Mickey Mouse Cinderella Cat Donald Duck Devil Tinker Bell Rabbit Witch Lion Skeleton Space Man Monkey

The brightest and ghostliest costumes over 20 styles to choose from! Finish rayon taffeta.

Huge Selection of CANDY and-NOISEMAKERS

including mask

198

WEST-MAPLE at HENRIETTA

WHICH ONE'S FOR YOU?

PUT AN END TO YOUR GARBAGE AND TRASH PROBLEMS FOREVER

GET A GAS INCINERATOR

FOR A LIMITED TIME

Gas APPLIANCE DEALERS

WILL INSTALL ANY GAS INCINERATOR PURCHASED (during this sale)

AT A SPECIAL LOW INSTALLATION PRICE OF ONLY \$10

This offer applies only to homes having Consumers Power Company Gas Service

SEE YOUR GAS APPLIANCE DEALER

Published in Cooperation with GAS INCINERATOR DEALERS by Consumers Power Co.

Shop Early

Unusual Package Decorations

- Papers
- Ribbons
- Seals
- Tags

for... **CHRISTMAS CARDS** while selection is complete

BODINE'S
"The Greeting Card Shop"

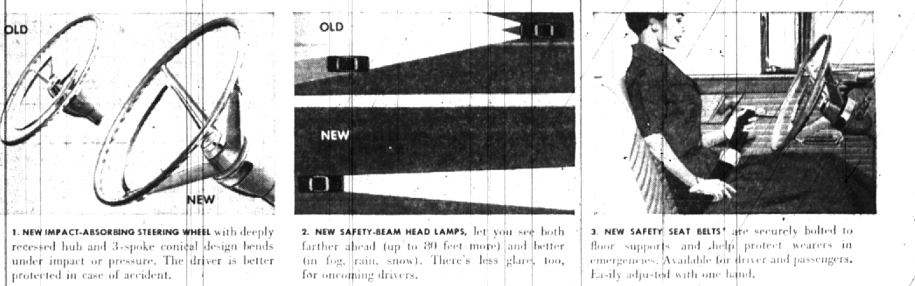
172 N. Woodward

OPEN SUN. 10-7 DAILY 9-9 MI 4-1177

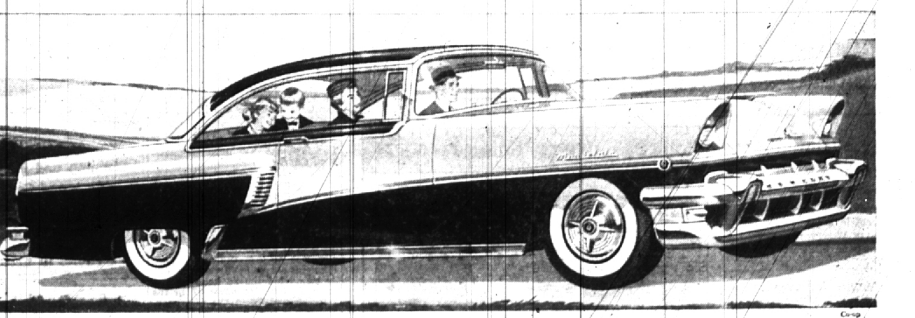
SHIRTS LAUNDERED 4 HOUR SERVICE

Birmingham
DRIVE-IN CLEANERS
WOODWARD AT ADAMS RD.
WE GIVE S & H GREEN STAMPS

Mercury offers 10 new safety features... More proof of THE BIG M's leadership!



- 1. NEW IMPACT-ABSORBING STEERING WHEEL** with deeply recessed hub and 3-spoke conical design lends under impact or pressure. The driver is better protected in case of accident.
- 2. NEW SAFETY-BEAM HEAD LAMPS**, let you see both farther ahead (up to 300 feet more) and better (in fog, rain, snow). There's less glare, too, for oncoming drivers.
- 3. NEW SAFETY SEAT BELTS*** are securely bolted to floor supports and help protect wearers in emergencies. Available for driver and passengers. Easily adjusted with one hand.
- 4. NEW PADDED INSTRUMENT PANEL*** has a thick plastic cushioning filler with excellent protective qualities. Helps prevent injuries in case of impact against the instrument panel.
- 5. NEW SAFETY DOOR LOCKS** are designed to hold doors closed under three times as much impact as former locks. Safety research shows there is much less likelihood of serious injury in accidents if passengers are not thrown from the cars.
- 6. REAR DOOR SAFETY LOCKING DEVICE*** is available in 4-door models. Children cannot unlock and open doors until the driver uses a key to trip the safety catch.
- 7. NEW CUSHIONED SUN VISORS*, NEW FULL-SWIVEL SAFETY REARVIEW MIRROR** are extra safeguards for driver and passengers.
- 9-10. NEW 225 AND 210-HP SAFETY-SURGE V-8 ENGINES AND IMPROVED SAFETY-GRIP BRAKES.** You enjoy more usable power than ever for split-second pickup, safer passing, easier hill climbing. Stopping action is smoother, surer, too.



Everywhere you look in THE BIG M for 1956, there's something new to see or try.

For instance, the BIG M's new 12-volt electrical system lets you start faster than ever. Mercury's exclusive-in-its-field ball-joint front suspension is further improved to give you even more superb handling ease and comfort.

And THE BIG M is styled new in dozens of exciting ways, from bumper to bumper. To accent its extra length, there's spectacular Hi-Tone color styling. In-side, fabrics are even more colorful, durable, luxurious.

For hardtop fans, the best news of all is that Mercury's famous low-silhouette beauty is now available in every series—Montclair, Monterey and Custom. See and drive THE BIG M at your Mercury dealer's. Come in today!

For 1956...The big move is to THE BIG MERCURY

Don't miss the big television hit, Ed Sullivan... TOAST OF THE TOWN... Monday evening, 8:00 to 9:00. Station WJDR, Channel 2

BOB FROST, Inc. 850 S. Woodward, Birmingham, MI 6-2200