

## Localities Throng DAC's Open-Week Festivities

There's been a thronging from Birmingham and Bloomfield to the Detroit Athletic Club this week to open the club's fall social season in gala fashion, to see the great Dunnington and officially to dedicate the DAC's newly-transformed main dining room. The five-night celebration started Monday evening, Oct. 10, and it will conclude tomorrow, the 14th.

Members from this area joined with Detroit and Grosse Pointe DACers for gay dining and dancing and to marvel at Dunnington's mentalist entertainment—real more will go into the details of this Thursday and Friday sessions of the exciting celebration. The singing of baritone Gene Stone is another facet of the floor show presented as part of the fest—It's the first show of DAC's planned fall and winter series.

FOR those members and their guests who had not glimpsed the "new" room before, the kind and coral decor was a revelation and they were particularly enchanted with the beautifully lighted, blue painting, Jules Holstovren's "Masquerade", focal point of the decorations.

Among those on opening night were Mr. and Mrs. Dwight H. Allen, the Frederick W. Sanders and Mr. and Mrs. John S. Rigdon. The Monday evening fete culminated a busy weekend for the Altons, whose housewarming from Friday to Sunday were Herman Hickman, celebrated former football coach, and Mrs. Hickman who had come from their New Haven, Conn. home, then on Saturday, for all of them it was off to Ann Arbor for the Michigan Army game.

## Color Slides, Mental Health Talk Slated

Holy Land photographs in color, discussion of mental health, and recollections are to be the highlights of three programs when the departmental meetings of Birmingham Woman's club meet next week.

A memorable experience in their lives will be told by all members of American Home department in a "scrubbook" program planned by Mrs. Norman Foster, chairman, for the luncheon next Tuesday at 1 p.m. Hostess is Mrs. W. U. Johnston, 952 Hildale.

SLIDES of the Holy Land by Mrs. Carl Binkle are planned for the Tuesday 1 p.m. luncheon meet of the Yino Arts department at Mrs. Lloyd Lake's home, 563 Linden.

Mrs. Glen Waggoner arranged the program. Program on mental health is planned by Mrs. John Duffy with Mrs. Marion L. Fink talking at the Literature department's lunch meet also on Tuesday. Mrs. E. D. Shuler, 16210 Riverdale is hostess for the 1 p.m. meet.

Modern Living department is meeting today at Yvonne Marshall's home, 20 Oxford, Pleasant Ridge, for hotbed dinner in the evening. Mrs. Bennett, 1004 is chairman.

**PRESBYTERIAN**  
**The Kirk in the Hills**  
in West Long Lake and BLOOMFIELD HILLS  
Dr. Harold C. DeWandt, Minister  
Identical Services  
9:30 and 11:00 A.M.  
The Church of Tomorrow  
Church School 9:30 and 11:00

**FOR THE BRIDE**  
**Sunbeam**  
DOUBLE AUTOMATIC  
IRONMASTER

**Heats Quicker, Stays Hotter, Irons Faster**  
Steady, correct heat automatically means shorter hours over the ironing board. Heat control right under your thumb. Available in 10 weights—lightweight, 4 lbs. or lighter weight, 2 1/2 lbs.

**\$14.95**  
**HUSTON Hardware Co.**  
Birmingham's Home Hardware Store  
205 N. Woodward MI 4-7330  
Hours: 8 to 5:30, Friday 8 to 9

## Dorothy Dow Wed in Jamaica

Mr. and Mrs. John Dow of Ardmore drive, Beverly Hills, announce the marriage of their daughter, Dorothy, to William H. Mitchell, M. Club, Phi Epsilon Kappa, profession of Mr. and Mrs. Louis Mikulich of Traunk, Mich., on September 23rd, in Kingston, Jamaica, British West Indies.

Dorothy was graduated from the University of Michigan where she was affiliated with Delta Delta Delta sorority. She is a former teacher at Longfellow and Washington schools in Royal Oak.

Her husband has a bachelor's degree in education from the University of Michigan. He was affiliated with Sigma Phi Epsilon fraternity, was secretary of Sphinx, Junior honor society, secretary of Michigan Junior honor society, a member of the M. Club, Phi Epsilon Kappa, professional educational fraternity, captain of the Varsity Tennis team, and played on the Varsity basketball team. He received the Fielding H. Young Honor Award and Phi Epsilon Kappa Honor Award. He served three years with the U. S. Air Force.

After a honeymoon in the islands of the Caribbean, Mr. and Mrs. Mitchell will live in Bogota, Colombia, South America, where Mr. Mitchell is Regional Sales Representative for the Chrysler Export Corporation.

**THE AMERICAN ASSOCIATION OF UNIVERSITY WOMEN**  
(A. A. U. W.)  
**BOOKS — BOOKS — BOOKS**  
for their 28th annual book sale at Detroit Edison  
\* **OCTOBER 17-22**  
For Book Pickup Call  
MI 4-2100 MI 4-2556 MI 4-2536  
**PROCEEDS FROM SALE USED FOR SCHOLARSHIPS**

**INSURED SAVINGS ACCOUNTS**  
**2 1/2 %**  
**CURRENT RATE**  
**BIRMINGHAM FEDERAL SAVINGS AND LOAN ASSOCIATION**  
Woodward at Maple • W. 12-Mile, Berkley

**INSURED SAVINGS ACCOUNTS**  
2 1/2% CURRENT RATE  
BIRMINGHAM FEDERAL SAVINGS AND LOAN ASSOCIATION  
Woodward at Maple • W. 12-Mile, Berkley  
You will find many bargains in The Eccentric Classified Columns.

**PUBLIC AUCTION**  
known as  
**HARRY BECKER & CO., FARM No. 1**  
2 miles East of Decatur, Mich.  
or  
28 miles South-west of Kalamazoo on Rt. 10 then 2 miles East on  
**OCTOBER 21 & 22, 1955**  
9:30 a.m. EST  
**\$170,000.00 WORTH OF REAL ESTATE & EQUIPMENT**

**REAL ESTATE PARCEL No. 1**  
Approximately 5 acres (more if desired) of excellent Muck Land with modern 8-room house in very good shape; Good Barn, size 60 ft. x 160 ft.; 4-unit Greenhouse 120 ft. x 200 ft. in tip-top shape. There are 2 large boilers that heat greenhouse, with 8000-gal fuel storage. A excellent wells to supply plenty of water, complete sprinkler system throughout greenhouse, as well as heat. This is an excellent opportunity for someone to get into a profitable business. There is a crop of big lettuce growing in hot-house at present.

**PARCEL No. 2**  
10 Acres or more of land with a large Labor Camp as follows: Cement Block building 44 ft. x 98 ft.; like new; Tire Block (about 16 ft. x 24 ft. with stools, shape); 7-room House 22 ft. x 36 ft.; fair; Wash House 16 ft. x 24 ft. with stools, duster, etc.; a large Mess Hall, 42 ft. x 36 ft., with walk-in electric cooler, in good condition.

**PARCEL No. 3**  
5 modern tile block Houses, 26 ft. x 30 ft., with water, toilets, etc., to be sold separately, with good sized lots for each; also, 7-room Frame House, with lot, or can be moved.

**TERMS & CONDITIONS** on Real Estate—20% down on day of sale, bal. to be paid within 30 days when deed is delivered. Balance of Terms and Conditions made known sale day.  
Real Estate will be sold on Saturday, October 22, 1955, at 2:00 p.m.

**MACHINERY** 7 TRUCKS & JEEPS  
1 D1 Cat & blade (2800 hours use) like new; 2 D2 Cats (2000 hours use) very good; 1 D3; 2 Int. Hs.; 3 Allis Chalmers; 3 F-12 and cuts; all tractors are in extra good condition and many with new tires. 1952 Ford platform Dump Truck; 1952 Ford Pick-up; 1947 Chevrolet Truck with platform dump. 1946 Chevrolet Truck with platform dump; 1948 Willys Jeep; 1946 Willys Jeep; 1949 Willys 1-wheel pickup; 4 Bolon tractors and equipment.

**3 COMBINES — 38 WAGONS — ONION & CELERY EQUIPMENT, ETC.**  
Model 100 self-propelled AC Combine used on less than 100 acres new; 2 model 60 AC Combine good condition; 22 Coby Wagons & Racks, 6 with airplane tires; 16 Int. Wagons & Racks; 2 Dills (self-propelled) Onion Toppers; 6 ft. Seaman Tiller with motor; 3 Hardie 470 Sprayers; 2 Brillion Tillagers for AC-G; Ditch Digger with int. motor; A-G-C Cultivators, Planters, etc.; 2 10 ft. Discs; 1 7-ft. Disc; Spring Harrow; Mole Plow for D4; 5.20-in. Single Oliver Plows; 2 Disc Plows; 2 1/2" Hydro Duster; 10 self-propelled Holland Transplanter; 6-row Celery Setter; 6-row Celery Banker; 3 6-row Celery Cutters; 3 Chisels for D4; 2 D1 Hillers; 2 Cultipackers; Ezee-flow Line (Int.); Elevators and Conveyors; DHC Wheels and tires, and Wide Fronts; 28 other good tires; Onion Topper Rollers and Graders; Land Leveler; 17 Mulchers; 31-wheel Hoes; 21 Shuffle Hoes; Celery Cutters; Culls, etc.

**SUPPLIES — FURNITURE — ETC.**  
Irrigation Pipes, 2000 ft. 1-inch Pipe; New Chain Saw; Bench & Table Saw; New overhead 1/4" 11 ft. Door; 3 scales; Hemelite Portable Pump; Large Tanks of all sizes; all kinds of Chemicals and Sprays; 15 Electric Motors, 1/2 to 3 hp; 10 Gas Engines; 8 Meters; 8 Centrifugal Pumps; Laporte and Rubber Belting; Air Compressor; 8 Meysers Baldinger Pumps; 8 Crepers and Spoons; Well Rig with bits and pipes; 4800 Generator with Buick motor; Link Belt Speed Reducer, new; 10 Heating Stoves; 15 (New & Used); 20 tons Wire for papering; Celery; 35 bundles whole-hide Paper; 480,000 Celery Twines; Telephone and Lamp Posts; Cinder and Tile Blocks; 58 Kegs Crate Nails; Boxes; Army Black Cans, etc.; 15 Wagon loads of small misc. items of value, as Electric Cords, switch boxes, pipe fittings, and hundreds of items too numerous to list. Everything sold, so come prepared to buy.

**AUCTIONEER'S NOTE:** We consider this to be the biggest and best line of land, buildings and machinery we have had to sell for years.  
Terms on Personal Property — CASH Lunch on Grounds.  
Conditions made known Sale Day.  
**EVERYTHING SOLD ON THE**

**Harry Becker Farm No. 1**  
DECATUR, MICHIGAN  
by  
**YODER & FREY, INC., AND ASSISTANTS**  
OWNERS ARCHBOLD, OHIO AUCTIONEERS



The Finest Gift Stamps in Town!  
The Lowest Everyday Prices in Town!

**YOU GET THEM BOTH**

At All

**WRIGLEYS**  
**BIG BEAR Markets**

Made with Pure, Red, Ripe Tomatoes

**HEINZ KETCHUP**

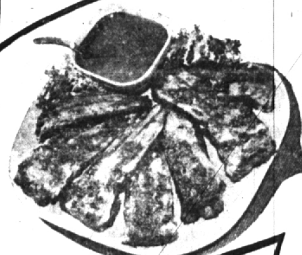
14-oz. Bottles **2 For 39¢**



**SPRY**  
Pure Homogenized Vegetable Shortening  
3 Lb. Can **69¢**



**MICHIGAN**  
Red Sour Pitted  
**CHERRIES**  
2 No. 303 Cans **29¢**



Lean, Meaty

**SPARE RIBS**

Medium Size For Bar-B-Q or Braising **45¢ lb.**

**Fancy Golden RIPE BANANAS**  
2 Lbs. **29¢**

Fresh Lake Erie **PICKEREL FILLETS** Boneless Pan Ready-Lb. **55¢**



**ALL BEEF FROZEN**  
Chopped & Flaked

**GRILL STEAKS**

2 lb. Pkg. of 8 Steaks **98¢**

**WRIGLEY'S Creamed COTTAGE CHEESE**  
16-oz. Carton **19¢**



Price Effective Through Oct. 15 — we reserve the right to limit quantities.

**Wrigleys**  
**BIG BEAR**

★ 635 South Woodward ★ 1855 Woodward at 14 Mile  
Open Thur., Fri., Sat. 'til 9 p.m. Open Daily 'til 9 p.m.