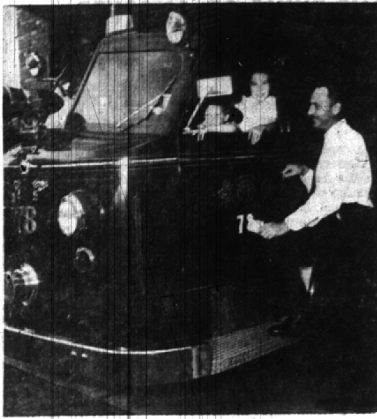


**Boy, 9, Hit by Car
Receives Bruises**

Gary Moore, 9, of 292 Daines, suffered a bruised knee and elbow Thursday when struck by a car at Woodward and Daines, according to police.

Witness said the boy darted from between parked cars into the path of the auto driven by Mrs. Elotta B. Barton, 18185 Dunblaine, Southfield township.

Selling your home? Advertise it in the "For Sale—Homes" column of The Eccentric.



FIRE MARSHAL George Scott talks to Junior Fire Marshals Richard Howling, 6, of 743 Harmon and Francis Baldwin, 11, of 788 Harmon in the truck, during the city's Fire Prevention Week Program.

Thousands of people read The Eccentric Classified Ads. So remember if you want to sell that hard-to-get-rid-of article, advertise it in the Want Ad section of The Birmingham Eccentric.

WRAPON STOPS DROPPING PIPES
LOW COST SO IT YOU SAVE!

Easy-To-Use Fiberglass Insulation

RAY'S HARDWARE
28855 Telegraph Rd. • 12 Mi. Birmingham, Michigan

**Marion Bemis
Replaces Gele
At Cranbrook**

CRANBROOK — Emile Gele, four years assistant director of public relations for Cranbrook Institutions, left Cranbrook recently to become an instructor in graphic arts in the school of art, Syracuse University, N. Y.

Gele, who was born in Alabama and spent his youth in Mississippi, was a 1942 graduate of the University of Michigan, spent three years in the army, studied in Paris at the Atelier Fernand Leger from 1949 to 1951, when he was admitted to Cranbrook Academy of Art, where he received his master of fine arts degree in 1951. At the U of M he was editor for a time of the Michigan Daily, student publication, a member of Sigma Delta Chi and elected to Michiganama, an honorary society.

REPLACING Gele is Marion Holden Bemis (Mrs. Elden J.), 1900 E. Square Lake Road, Bloomfield Hills, who has had an extensive career in reporting, editing, publicity and public relations.

For 18 years Mrs. Bemis was editor and publicity director of the Women's City Club of Detroit, largest women's club in the country. She was a Detroit Free Press staff member for four years, and



ERNEST ROBINSON (right) B'ham's Y's Men's club president, receives a plexiglass-encased Japanese fan from Don Davis of Battle Creek at Kellogg Center, MSU, in recognition of the club's 1954-55 Bishop Trophy award in connection with aiding foreign Y's club members to come to Philadelphia for the organization's convention last year.

was later assistant director of the Mrs. Bemis is a University of citizens' housing and planning Michigan graduate where she was council, in charge of publicity on a member of Alpha Phi and edited smoke abatement, better housing. The triander, literary monthly land for parks and playgrounds. She has written on houses and neighborhood, rehabilitation, and gardens for such national month-plans for the Detroit riverfront lies as the American Home, In- where the new civic center is com- ternational Studio, American Ar- ting to completion. tist, and Art News.

We Were in Error Theater Breakin

Last week The Eccentric erroneously reported that a car driven by William H. Knapp, 36, of Royal Oak, crashed into the rear of another car, injuring the other driver, Arthur H. Hallenbeck, 23, of 25-5 Heide, Troy township. Instead, it was Hallenbeck's car which struck the rear of Knapp's auto at Maple and Auians. The Eccentric regrets the error.

The shortest distance between buyer and seller... employer and employee... landlord and tenant... is a Want Ad.

NORMAN R. BECKER, O.D.

Eye Examinations—Glasses Fitted

129 EAST MAPLE, BIRMINGHAM
PHONE MIDWEST 4-0641

HOURS: 9:00 a.m. to 5:00 p.m. DAILY
EXCEPT FRIDAY, 9:00 a.m. to 8:00 p.m.

OPTOMETRIST — 8 YEARS IN BIRMINGHAM

PAVING CONTRACTORS



INSURED SAVINGS ACCOUNTS
2 1/2% CURRENT RATE

BIRMINGHAM FEDERAL SAVINGS AND LOAN ASSOCIATION
Woodward at Maple • W. 12-Mile, Berkley

END GARBAGE AND TRASH PROBLEMS Forever!

FOR A LIMITED TIME
Gas APPLIANCE DEALERS
WILL INSTALL ANY GAS AUTOMATIC INCINERATOR PURCHASED (during this sale)
AT A SPECIAL LOW INSTALLATION PRICE OF ONLY \$10

This offer applies only to homes having Consumers Power Company Gas Service

Visit Your **GAS APPLIANCE DEALER**

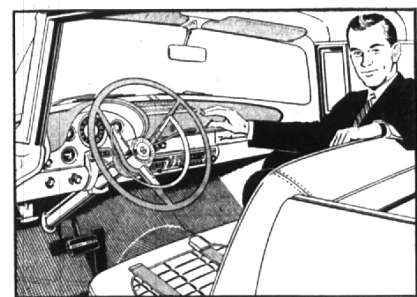
Published in Cooperation with GAS INCINERATOR DEALERS by Consumers Power Co.



The Fairlane Victoria is one of Ford's 18 new Thunderbird-inspired models for '56. You can see Thunderbird beauty in its long, low lines and graceful silhouette.

Drive it today!

'56 FORD...with new 202-h.p. Thunderbird Y-8



4 NEW LIFEGUARD FEATURES—new deep-center steering wheel, new double-grip door locks, optional new padded instrument panel and sun visors, and optional new Ford seat belts.

with new Thunderbird Styling with new Lifeguard Design

A glance tells you that the '56 Ford has the long, low lines of the fabulous Ford Thunderbird, America's favorite dream car.

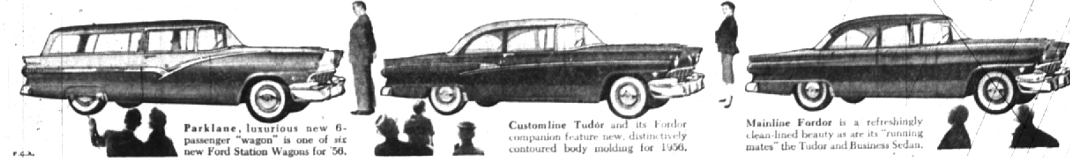
But wait till you touch the gas pedal! Then you'll know that Ford goes like the Thunderbird, too. With the new 202-h.p. Thunderbird Y-8 engine, available in Fordomatic Fairlane and Station Wagon models, you'll pass with new confidence, smile at hills. And yet, split-second "GO" is only part of the story, for this new Thunderbird engine is not merely a V-8... it's a Y-8. That means it has a rigid, extra-deep block which makes for smoother, quieter going.

And there's even bigger news! It is Lifeguard Design—the first major contribution to driver and passenger safety in accidents. With the cooperation of leading universities, medical associations

and safety experts, Ford found that most serious accident injuries were caused by the driver being thrown against the steering post, occupants being thrown forward against hard surfaces, or from the car. So, Ford developed a new Lifeguard steering wheel with a deep-center structure to help protect you from the steering post... Lifeguard double-grip door locks to give added protection from doors springing open under shock... optional Lifeguard cushioning for instrument panel and sun visors, to help lessen injury from impact... optional seat belts that help keep occupants securely in their seats.

Come in soon! See the '56 Ford, test its power, and learn what Lifeguard Design means for the greater safety of you and your family. Then you'll know exactly why the '56 Ford is...

the fine car at half the fine-car price!



Fairlane, insouciant new 6-passenger "wagon" is one of six new Ford Station Wagons for '56.

Customline Tudor and its Fordor companion feature new, distinctively contoured body molding for 1956.

Mainline Fordor is a refreshingly clean-lined beauty as are its "running mates" the Tudor and Business Sedan.

HAROLD TURNER, Inc.

Turn to Turner — Your Friendly Ford Dealer