

WEAVING in her room where two looms have projects underway, is Mrs. L. Ollesheimer. She is among Michigan Weavers Guild members with Yule gift sale on their agendas.

Yule Gift Sales Starring Hand-dones by Local Artists

By DOROTHY JEAN ZACK

Intertwining of silver in a fine linen altar cloth is distinctive yet quiet touch given by Mrs. Louis T. Ollesheimer for a gift she's weaving for the small altar at St. James Episcopal church.

She's among many busy weavers Mrs. William E. Beresford, Mrs. in the area looking forward to James Beresford, Mrs. George the Michigan Weavers Guild ex-Hauptman and Mrs. Carl Zuber, all bid and sale next Wednesday at of Bloomfield Hills, and Mrs. A. the Women's City club, Detroit. G. Sobieschmid and Mrs. L. I. Many members, who include Roach of Birmingham, will be selling Mrs. Norma Griswold and Mrs. Earl S. Hebus of Lathrup Village. The show, ideal for Christmas

gift shopping, is from 10 a. m. to 9 p. m.

BESIDES HER own Christmas giving, Mrs. Ollesheimer's weavings are used to decorate her own three-year-old home on Baldwin in Birmingham.

A wool rag rug falls into the antique tone of her weaving room, where besides two looms, there are a sampler done by her grandmother in 1826 and a painting of her husband's great grandfather.

Draperies include soft browns against the loom room's knotty wood walls, gold tones in the living room, and red and wood shades

at the school would be decorative for modern homes.
The exhibit now in the school's corridors include geometric paintings.

WHILE THE DETROIT Art Institute bustles with activity readying the Michigan Artists exhibit that opens with dinner and special showing Nov. 15, many local artists are wondering how their entries will fare.

With 22 prizes to be awarded, chances of this area having several winners are high—and it's been years since there wasn't at least one Birmingham or Bloomfield winner.

In a new home where the man of the house is working out new furniture ideas are the Hugh Actons.

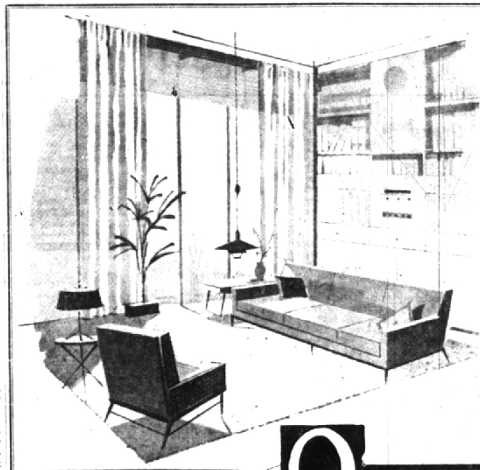
THE YOUNG COUPLE and Rad, 10 months, have moved to 2338 Manchester since Acton's graduation from Cranbrook academy of art, in May. He is now in General Motors' styling department, but uses free-time manufacturing a line of tables with V-shaped legs of cast brass and tops of marble, wood or other out-of-ordinary materials.

A jungle jim he designed at Cranbrook was popular in their neighborhood last summer.

MODERN ARTIST touch at City-Country school is given by Alicia Mackie, Bloomfield Hills designer, in the wall-framing that she arranges with varied sets of paintings, and textures of netting.

She's also done the tiny building for children's outdoor playthings, with yellow, orange and white strips edged with black framing and tiled-up roof, as pictured. It's a switch from the jewelry she's shown at Little Gallery.

Society deadline is 3 p. m. each Tuesday.



SHEER
Loveliness

These are the draperies that love to go out on your toes... that look like sheer wisps of flattery yet wear and wear. Come in and see our selection for yourself every piece of fabric is designed to beautify your home.

Choose from . . .
Chromespun—Sheers—Fortisan
Metallics—Nylon—Bamboo
Fiberglas—3-D Woven Textures
Prints—Traditional,
Scenics, Moderns

from \$1⁹⁸ to \$5⁹⁸ yd.

Quimm's Draperies
AND SLIPCOVERS

LINCOLN 6-3311 | LINCOLN 3-4656
• Prompt service
• Excellent workmanship

INTERIOR DECORATORS AT BUDGET PRICES
SEE OUR NEW LINE IN YOUR HOME

OPEN THURSDAY, FRIDAY EVENINGS
2875 N. WOODWARD — 3 Blocks South of 12-Mile



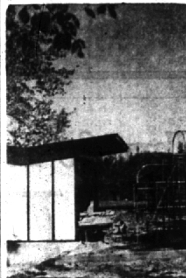
Rogers
Lingerie

- Pink Violet
- Buttercup
- Blue Bell
- Flare Red

Sizes 32-38
\$5.95

A short cut to sleeping pleasure is this dress length gown of nylon tricot so delicately detailed with longtail blossoms. The full skirt is finished with charming swallows. To complete the flatterer, fresh look—a wide array of garden shades.

Kay Baum
BIRMINGHAM



TILT of Alicia Mackie's playhouse design is upwards.

at porch windows. The latter, on curtain rollers, filtered light while letting in breezes last summer, she says.

FOR HER altar cloth, she is using No. 10 thread, and weaving with 45 threads to the inch.

A visit to Churchill Weavers and Berea craftshops in Kentucky are part of the Ollesheimer's trip these next two weeks, while they loan their home to their son and his family. The Donald Ollesheimers and Robert and Beth are in process of moving from Huntington Woods to Jonathan court in Bloomfield Hills.

HAND-DONE crafts are starring in the Christ Child society's annual sale tomorrow from 1 until 6 at the Latin Quarter in Detroit. Children can turn out sophisticated, saleable products according to Mrs. Charlotte Whitney, who teaches at City Country school in Bloomfield Hills.

An artist-herself and doing metalwork for the studio her husband, William operates, she doesn't hesitate to introduce children to new art forms.

ENAMELED TILES in geometric designs done by senior students in the school, which goes up to the eighth grade, are clear-lined, and in harmonious colors. Mobiles done

MERCURY'S OCTOBER SALES SMASH ALL-TIME RECORDS

Biggest October in Mercury history starts the big move to THE BIG M

On September 29th THE BIG M—the new 1956 Mercury—was unveiled for the first time in dealers' showrooms. By November 1st, actual sales figures indicated immediate, overwhelming public acceptance far greater than in any previous first month following the introduction of a new Mercury model. It's still another new all-time record month for one of the fastest growing cars in automotive history. Come in now—see why so many people are making the move to THE BIG M.

- CHECK THE BIG M'S LEADERSHIP FEATURES!
- New 225-hp SAFETY-BURGE V-8 engines
 - New high in usable power for pickup, passing, hill-climbing
 - Ten big, new Safety-Engineered features
 - Exciting, new Flo-Tone color styling
 - 13 glamorous new models, including a whole fleet of low-silhouette hardtops
 - New, wider price range
 - Consistently higher resale value



ALL THE LOVE THAT A GIFT CAN HOLD —

IN A PORTRAIT BY . . .

bill williams
Photographer

IT IS TO YOUR ADVANTAGE TO BE PHOTOGRAPHED EARLY FOR CHRISTMAS

LI 3-4480
1107 CROOKS RD. (at Main)
Royal Oak

The big move is on—

to **THE BIG MERCURY**

Don't miss the big television hit. Ed Sullivan's "TOAST OF THE TOWN," Sunday evening, 8:30 to 9:55, Station WJRH, Channel 1

BOB FROST, Inc. 850 S. Woodward, Birmingham, MI 6-2200