

# Vary Decorations Materials

By ALICE WESSELS BURLINGAME  
Special Writer for The Birmingham Eccentric

At Thanksgiving time homemakers enjoy using ornamental leaves to make decorative arrangements, often incorporating large mums at the apex to give that certain "twist". This apex accent may be changed several times as leaves are a fine investment which will last many weeks.

When these arrangements are made the same rules hold for the placing of the foliage as when fresh flowers form the total arrangement. They should be placed one at a time in the container so that there is a rhythmic relationship between each piece of foliage.

As you face the container the right side should balance with the left, just like months. The pale pink flowers were a tester water.

Large, bold, flowers or hold, large leaves near the top of the vase can have weight and balance large standing bouquets where their property with a real problem the leaves are on the water surface. I not as heavy, am going to track down the data to be sure that such a treatment will not destroy fish. The chemical claim to completely disintegrate algae so that it will not clog drains.

Recent developments in horticulture and its facets make this field a fascinating hobby for those whose life has always been filled with daily challenges.

Mrs. R. C. Banker, 2514 Com-

fort Walnut Lake, has wonderful luck with two orchid plants.

**SHE HAS** a black merrimee which has a deep purple flower blooming in November. As she has owned it for nearly three years, you can tell she has the formula for success.

Mrs. Banker sprays the plant with a fine mist once a week and in the interim has it adorning the bathroom where it benefits from the shower and its resulting steam each day.

In the summer it is kept on the screened porch and once a week receives a fine spray from the garden hose. She does not feed or repot her orchids but they remain in osunda fiber which does not possess food value but holds water like peat does.

At Christmas time Mrs. Banker can plan on a white orchid for decoration.

**Virginia Beresford Joins Agora Unit**

Virginia A. Beresford, daughter of Mr. and Mrs. James A. Beresford, of Lone Pine road, Bloomfield Hills, has become a member of Agora, an extra-curricular organization at Wellesley College which is open to juniors and seniors interested in political and social problems.

Miss Beresford is a senior French major and has won several academic honors.

She was a Freshman Honors student, and a Durant Scholar her junior year. Miss Beresford is a graduate of Chatham Hall, Chatham, Virginia.

## Altrusans Sending Toys to Austria

The living room of Marjalee Brunsie, 1079 Riverdale, was charged with the spirit of Christmas when the many packages were wrapped for Altrusa's Austrian boy which they sponsor.

The warm clothing and interesting toys were selected by Mrs. W. F. Thomas, who is an authority on these things, and the package is well on its way to the little boy.

The Birmingham Altrusa club held its regular monthly business meeting at the Community House Monday following dinner at 7:00 p.m. The club's Executive Board meeting was at 5:45 p.m. Committee members after the regular meeting to discuss plans for the coming months.

Birthdays, anniversaries, guests, births, parties are all new—the society editor about them.

## See Winston-Salem

Among the visitors to Old Salem, the Moravian village now being restored here, on Thursday, November 3, was Mrs. Wm. S. Anderson of Birmingham.

**STORE HOURS**  
9:30 - 5 Mon. thru Sat.  
11 - 4 Sunday

**"Buy at The Mill—and Save"**

**Definitely**  
—A Saving . . .

Much of the material sold in our retail store is made right here in the Clinton Woolen Mill. This you buy at a **Real Saving.**

Profits of wholesalers and jobbers are eliminated. The retail profit is lowered by our large volume. Our customers benefit thereby.

**You too can SAVE!**

**CLINTON WOOLEN MILL**  
On U.S. 112 Clinton, Michigan



You, too, can acquire a valuable collection of your own. It's easy to accumulate cash for emergencies and opportunities — once you get into the regular savings habit. Why not start here—next payday.

**THERE'S NOTHING QUITE LIKE HAVING MONEY IN THE BANK!**

**PROTECT YOUR VALUED POSSESSIONS**

from destruction, loss or theft by placing them in a **SAFE DEPOSIT BOX**

Now Available at our **SOUTH WOODWARD OFFICE**

## THE BIRMINGHAM NATIONAL BANK

BIRMINGHAM, MICHIGAN

Member Federal Reserve System

Member Federal Deposit Insurance Corporation

188 N. Woodward at Hamilton 1954 S. Woodward near 14 Mile Rd.



MRS. JAMES WATERMAN

## Ellen Mae Anderson Married in California

James Berleigh Waterman claimed Ellen Mae Anderson as his bride in an afternoon ceremony Saturday in the Presbyterian church in Carmel, Calif.

The bride is the daughter of Mr. and Mrs. Ernest E. Anderson of Yarnon road, Birmingham. Her groom is the son of Mr. and Mrs. B. Waterman of Pleasant Hill, Ala.

The couple will make their home in Carmel, Calif.

Ernest M. Anderson, brother of the bride, a University of Michigan Law School student, flew out for the ceremony. Others attending the wedding who were former Birmingham and Forest residents now living in California, were Mr. and Mrs. C. S. Goddard and Howard Bagley and son, William.

Society deadline is 3 p.m. each Friday.

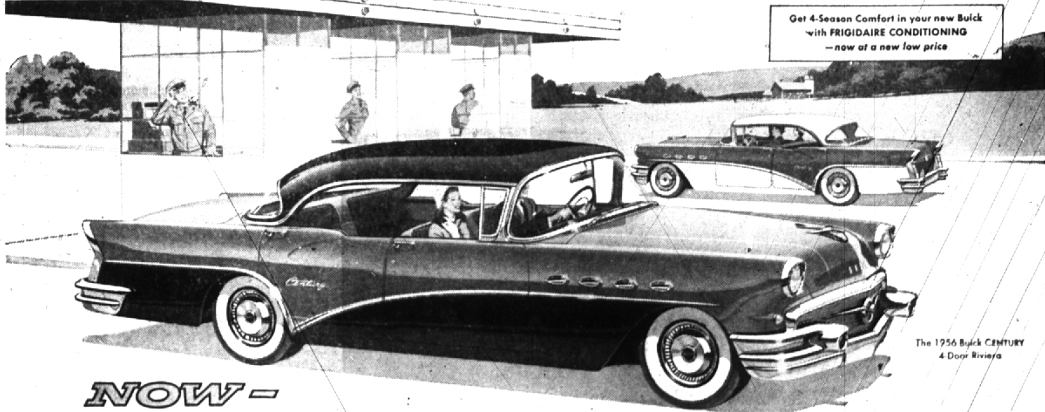
*—it's time again*

**TO HAVE RUGS AND CARPETS CLEANED FOR THE HOLIDAYS.**

Being a pile fabric they absorb and hold quantities of dirt. A rug can hold its own weight in dirt! For a professional cleaning of Domestic, Oriental, Cotton or Wall-to-Wall carpets, call Oakland County's largest and most modern carpet cleaning plant. Call now for an early appointment.

● Free Pickup and Delivery Service ●  
Tacked-Down Carpeting Cleaned on Your Floor

**CRESCENT CARPET CLEANING CO.**  
123 CATALPA DRIVE LINCOLN 3-3552 ROYAL OAK, MICH.



Get 4-Season Comfort in your new Buick with FRIGIDAIRE CONDITIONING — now at a new low price

The 1956 Buick CENTURY 4 Door Buick

**NOW —**  
**Just touch the pedal and away you go!**  
*(That's the New Variable Pitch Dynaflo!)*

**O**F COURSE, you can floor the pedal of this stunning new '56 Buick and get the full-power sweep of its advanced new Variable Pitch Dynaflo.

That's how you switch the pitch of this airplane-principled transmission for instant safety-surge acceleration to get out of a tight spot on the highway.

But now you get a brilliant new response at the start of pedal travel, too.

Now you get a solid take-hold for instant take-off in the first inch of pedal action — where most of your normal driving is handled. And you get this

great new getaway with a big boost in gas mileage, too.

So there you are, just nudging the pedal, and getting action that makes you feel like you've floored it.

There you are, handling all your normal driving situations with a confident toe-touch — with new surety and snap — and with the happy satisfaction that comes with a sizable step-up in the miles you get from a tankful of gas.

And there you are, rolling along with beating pride as boss man of the best Buick yet.

For here you have, beating any past Buick, the greatest power yet — the boldest styling yet — the sweetest ride yet — the smartest interior yet — and, by far, the best buy yet.

Drop in on us this week — tomorrow, if you can — and see for yourself that there's never before been anything like this Buick beauty for 1956.

\*New Advanced Variable Pitch Dynaflo is the only Dynaflo Buick builds today. It is standard on Hydramatic Super and Century — optional at modest extra cost on the Special.

**It's the '56 Buick — Best Buick yet**

WHEN BETTER AUTOMOBILES ARE BUILT BUICK WILL BUILD THEM

808 S. WOODWARD **SUMNER MOTOR SALES, Inc.** PHONE MI 4-9100

**The Pick of Cards for Christmas**

**BOX ASSORTMENTS IN ALL TYPES OF CARDS. PRICED FROM 50¢ TO \$2.00 A BOX.**

A Wide Assortment. Choose Now While Selections Are At Their Peak.

**GREGORY MAYER & THOM**  
167 N. Woodward MI 6-4180