



LOADING LUGGAGE for another trip is Mrs. G. T. Christiansen, with the help of Mrs. William W. Cowan, who's envying her her trip to Toronto.

## Busy Young Traveler Is Pi Phi President

Mrs. G. T. Christiansen, 1415 Birmingham Blvd., is a very busy young woman these days, for she is in the midst of her annual Canadian tour for Pi Phi Phi as its Epsilon Province President in charge of Active Chapters.

It was just last May that Mrs. Christiansen received the honored and past president of the Bloomington of Pi Phi Phi, Alumnae club has five active chapters in her province, has been busy ever since with her fraternity duties. Her work for Pi Phi Phi is particularly noted and Hillsdale in Michigan, as well as two Canadian chapters at the University of Western Ontario and young mothers of those little girls. Each year, acting as a liaison between the National and College levels of Pi Phi Phi, Marnie will

## 250 Parents See Poppleton

About 250 parents attended Poppleton school's open house last Thursday, when parents visited classrooms, saw children's work and talked with teachers.

Mrs. Myrtle Bro, principal, told parents that due to overcrowded conditions in the school, they will not be able to have the annual Christmas program this year, but here will be caroling, movies, story telling, and parties for the school children.

Refreshments were served by fourth and fifth grade room mothers.

Because of holiday activity, there will be no PTA program in December.

## Starr Auxiliary At Dennisons

The Southern Oakland county auxiliary to Starr Commonwealth for Boys will hold their November meeting and tea on Tuesday at 2 p.m.

It will be at the home of Mrs. John P. Dennison, corner Church and Goodwin, in Bloomingdale Hills. Guest speakers will be Floyd Starr and boys from Starr school, and a musical program will be given by Lucille Stanbach, pianist.

visit each of the five chapters to review all phases of sorority organization and see that the chapters are fulfilling their duties and responsibilities to fraternal, scholastic, and extra curricular life.

**MONDAY MORNING**, she took the train to visit her Canadian charges. First stop was at London, Ontario where she saw the Pi Phi at the University of Western Ontario.

Her husband, Tom, joined her on Wednesday and continued on to Toronto with her. While Marnie sees the women at the University of Toronto Tom hopes to whittle down his Christmas shopping list a bit.

After Marnie's official duties are over on Friday she and Tom hope to "see the town" and then return to Birmingham on Saturday.

**WAITING** TO hear news from the University of Toronto is Mrs. William W. Cowan, a '54 graduate, now a member of the local alumnae club. Tuesday and Wednesday of last week Mrs. Christiansen was in East Lansing visiting the Pi Phi at Michigan State.

While there she received a thorough tour of the new Pi Phi Chapter House, and along with Dean Frances DeLisle was co-guest of honor at a dinner Wednesday evening given by the Pi Phi. Among the Birmingham girls who are Pi Phi at State whom Marnie saw and visited are Mary Holmes, 114 Knox, Jane Gruber, 1778 Melton, and a former Bham resident, Janice Cooper.



TAKING A PREVIEW for Baldwin school Parent-Teacher association open-house are Mrs. James Herbst and Mrs. R. P. Meryman, at left, Arthur Roller, principal, at right. In the store arranged for junior businessmen in Mrs. Jean Pomnichowski's first grade room are Doug McGaw and Diane Hendershot.

## Dinner and Party Set for Tonight

A dinner meeting at the Birmingham Community House at 7 p.m. today, for the Birmingham Business Women's club will be followed by a social in the form of a white elephant party. Each guest is to bring a gift.

Chairman of the party is Louise Pratt with Hazel Lawler assisting. Preceding the dinner will be a get-acquainted party at Nat's Hat Shop at 6 p.m.

At a recent meeting Mrs. Warren L. Small was elected president for the 1955-56 season. Elected to assist her was Mrs. Louise Pratt, vice president; Mrs. Helen Burkhardt, treasurer; Mrs. Roy H. Brown, corresponding secretary; Miss Margaret Rowe, recording secretary; Mrs. Bennett and Mrs. H. C. Hollen, Mary Griffith Loan Fund.

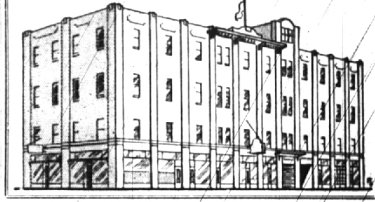
**ANNOUNCEMENT**  
We are pleased to announce the opening of a finishing school designed to fit the needs of the woman who cares.

MAKE-UP • FIGURE CONTROL • STYLING  
VOICE-DICTION • POISE • FASHION MODELING  
operated by professional models

**RENEE**  
FINISHING SCHOOL  
511 Ridgedale Rd. at Hunter Birmingham, Mich.  
for complete details call  
Midwest 7-4222

**NOW!**  
PHONE MIDWEST 4-4300

For Convenient  
**MOVING AND STORAGE BY**  
**GAUKLER'S**  
AGENT FOR ALLIED VAN LINES  
NEW BIRMINGHAM OFFICE  
139 West Maple Ave. in the Field Building



**CUSTOM LAMP SHADES**  
• PICTURE FRAMING  
• OLD PRINTS  
• LAMPS WIRED

**Ruth Haigh**  
Open 9 to 5 Daily  
165 Pierce MI 4-2002

**BALENCIAGA . . .**

*Presents*  
**"LE DIX"**  
Perfume and Toilet Water

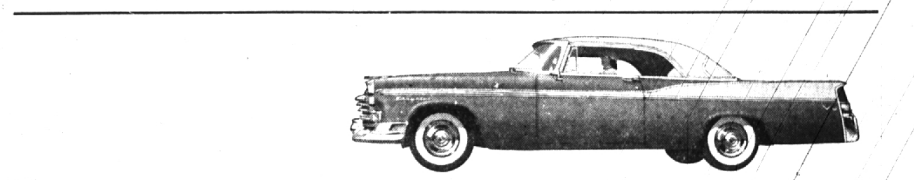
A totally different blend of oils for a special occasion, accented for evening wear. Also available in a lighter vein, "La Fuite des Heures", a fragrance emphasizing the floral blends.

Scaled and Bottled in France

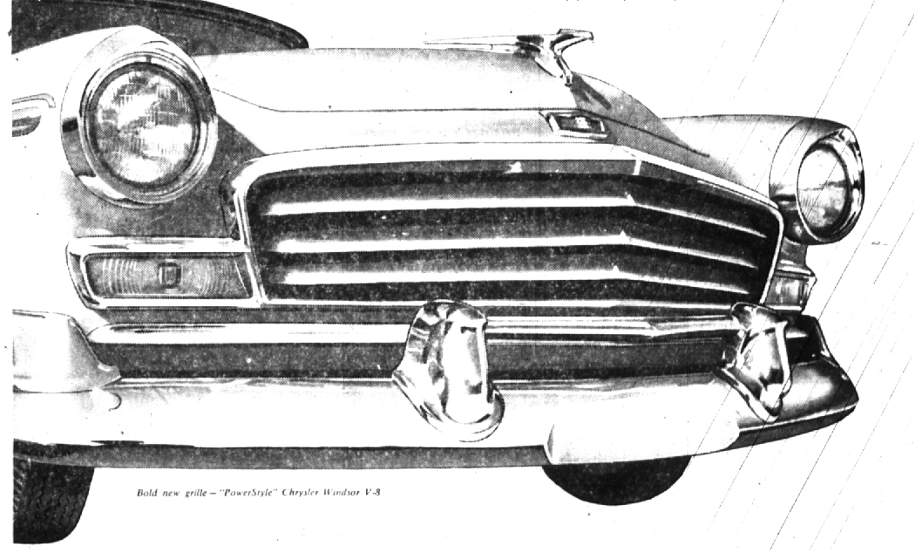
Perfume \$8.75 to \$23.00	Toilet Water \$6.00 to \$10.00
------------------------------	-----------------------------------

Now Available at . . .

**MILLS PHARMACY**  
1740 W. Maple at Chesterfield MI 4-5069



Exciting silhouette—"PowerStyle" Chrysler Windsor V-8 the popular Newport hardtop model



Bold new grille—"PowerStyle" Chrysler Windsor V-8

**High-style hits the highway with a Sunday punch!**

Sure, this new "PowerStyle" Chrysler looks powerful—looks like it's flying high . . . even when it's parked.

But take a Chrysler out on the highway where it can really show its stuff! Only then can you know what power means.

Take a Chrysler Windsor V-8, for example. Here's live action in as sleek a package as ever came down the pike. It's not power *everything*, including an optional power-packed Sunday punch. Chrysler's great new "Power-Train" that boasts horsepower 907, torque 1077, and getaway acceleration 15". All without burning any extra gasoline!

AND NOW . . . PUSHBUTTON DRIVING! Another new Chrysler first—the sensational car idea of the year—is Pushbutton Power-Flite. Just think! You'll never again have to shift gears. Just touch a button on the safe left side of the instrument panel . . . and presto, you've got the drive you want.

Well, what are you waiting for? Just for the feel of it, put yourself in the pilot's seat of the new "PowerStyle" Chrysler Windsor . . . with new SpinFire V-8 engine . . . new Pushbutton Power-Flite . . . new Power-Plot Steering . . . new Power-Smooth Brakes . . . and the go-getting new optional "Power-Train."

We're warming you up for you right now!

**"PowerStyle" CHRYSLER**  
NOW MORE THAN EVER . . . AMERICA'S MOST SMARTLY DIFFERENT CAR

**SEE YOUR CHRYSLER DEALER**

FOR THE BEST IN TV, SEE "IT'S A GREAT LIFE" AND "CLIMAX"—SEE TV PAGE FOR TIMES AND STATIONS