

**Railroaders Honor Long-Term Service**

Long careers in railroading brought citations to two Birmingham men when they were honored by the Brotherhood of Locomotive Engineers in Detroit. Both are members of the senior brotherhood's Division 1, Engineers in Detroit. News copy submitted early in necessary given preference, so the "early bird" usually gets the "beaver" road, and the 30 years of space.



Honestly—  
someone's hoping for  
**Your Portrait**

Next to age name on your list, isn't there a doodle or squiggle where your pencil has worried, "What to give...?"

Your Portrait is the gift that means most of all to those near and dear to you. Make this a wonderful Christmas—phone for an appointment and have your Portrait made for giving—now.

The **Arnold Studios**  
PHOTOGRAPHIC ARTISTS  
211 Birmingham Theatre Building  
Phone Midwest 4-2221

**Studebaker's "President Classic"**



READY FOR its 1956 debut is Studebaker's President Classic 4-door sedan with 210 horsepower engine and new styling. There are 12 models in the President line. Local display is at Carkner's, 606 S. Woodward.

**The Ambassador Country Club**



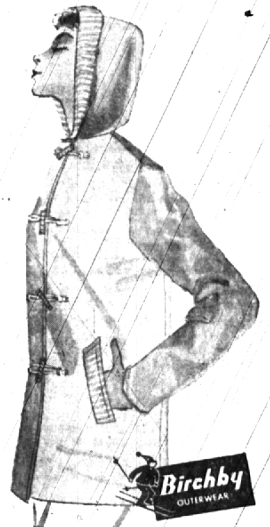
AMERICAN MOTORS Corp. will introduce the 1956 Nash at all dealerships November 17. This Custom car has a new V-8 220-horsepower engine, compared to the 208-hp. first year. Other horsepower in the Nash line include 130, 135 and 145-hp. autos.

snug  
warm

... and so smart

The "Konvoy-Jak"  
will go everywhere  
with you . . .

to make smooth sailing of wintry weather! Adapted by BIRCHBY from a famous import . . . with wooden "toggle" closings . . . contrast knit trim . . . and a detachable hood to make the Konvoy-Jak three-season sensational! Invisible elastic "snugs" the sleeves . . . snaps at neck and hem keep Spring inside! Red with White knit trim. Dazzle Blue/White. White/Navy. Navy/White. Pink/White and Charcoal/Pink. Sizes: 10-20.



**\$16<sup>98</sup>**

The  
**F. J. MULHOLLAND  
Company**



WHICH ONE'S FOR YOU?

PUT AN END TO YOUR GARBAGE AND TRASH PROBLEMS FOREVER

**GET A GAS INCINERATOR**

FOR A LIMITED TIME

Gas **APPLIANCE DEALERS**

WILL INSTALL ANY GAS INCINERATOR PURCHASED (during this sale)

AT A SPECIAL LOW INSTALLATION PRICE OF ONLY

**\$10**

This offer applies only to homes having Consumers Power Company Gas Service

SEE YOUR GAS APPLIANCE DEALER

Published in Cooperation with GAS INCINERATOR DEALERS by Consumers Power Co.



HAROLD W. H. BURROWS (left), 265 Manor Place, Bloomfield township, vice president and controller of Parke, Davis & Company, receives a bronze "oscar" for the best annual report in the drug products industry. The presentation was made by Weston Smith (right), originator and director of the annual report surveys made by Financial World, national weekly magazine. Parke-Davis also won second place in the larger "consumer products" classification.



"TRY OUR Wisconsin cheese," says Miss Mary Allen Jenks, alias "Alice in Dairyland," during her appearance in the dairy section of the A&P supermarket, 210 S. Woodward, last week.

**WARM and ATTRACTIVE BOYS' JACKETS**

Headquarters for all types of warm winter jackets for boys of all ages. Little fellows and teen-agers all like this selection that incorporates good looks along with their superior frost repelling qualities.



**Mackinaw Type Jackets**  
Beautiful blended plaid patterns with lightweight quilted linings. Sizes 6 to 20.  
**\$16<sup>98</sup>**

**OLIVE DRAB JACKETS**  
The favorite of the teen-age crowd. Complete with fur hood in sizes 6 to 20.  
**\$11<sup>98</sup>**

**PLASTIC JACKETS**  
U.S. Rubber has produced this plastic that looks and feels remarkably like leather. Fur collar, inner knit cuffs in red or brown. Sizes 6 to 16.  
**\$15<sup>98</sup>**

**STRAT-O-JAC**  
Tweeds and flannel dress type suits in sizes 6 to 20.  
**\$22<sup>50</sup> to \$29<sup>98</sup>**



**Reversible Jackets**  
Wind and water repellent shell with plain or plaid wool lining that can be worn in or out. These have detachable hoods.  
Sizes to 12 **\$19<sup>98</sup>**  
Sizes 12 to 20 **\$22<sup>50</sup>**



**VARSITY JACKETS**  
Bright colors with contrasting trim and piping. Regular or knit collars and knit cuffs. Sizes 6 to 20.  
**\$9<sup>98</sup>**

**Boys' Hats & Caps**  
In a wide variety—  
from **\$1<sup>98</sup>** to **\$3<sup>50</sup>**



**MULHOLLAND'S** MEN'S and BOYS' DEPARTMENT

WE DELIVER

CHARGE ACCOUNTS WELCOMED