

Radio Repairman On Leave in Tokyo

PPC Gary R. Nyberg recently spent a week's leave in Tokyo from his unit in Korea. A radio repairman in the 75th Field Artillery Battalion, he arrived overseas last July from Fort Knox, Ky., his basic training camp.

The 1951 Baldwin high school graduate worked for County Products, Inc., of Centerville before entering the army in December 1953.

Nyberg is the son of A. F. Nyberg, 2187 Eastman, and the husband of Nancy, who lives at 156 East Frank street.

To Participate In Apple Jack

Second Lt. Philip S. Plexico, son of Robert S. Plexico, 309 Arlington, is among 25,000 soldiers slated to participate in Exercise Apple Jack during May at the Yakima Firing Center near Fort Lewis, Wash.

Lt. Plexico, executive officer of Battery C in the 2nd Infantry Division's 37th Field Artillery Battalion at Fort Lewis, was graduated from Princeton University before entering the Army in September 1953.

charge of production since 1952. Until two years ago, American Metal Products company was primarily an auto parts manufacturer, but recent acquisitions of plumbingware and other domestic subsidiaries have been made.

CORP resides at Lone Pine court with his wife and three sons.

If one were to keep a record of the time, say weekly, that he gives to doing things that are of little or no real value to him, perhaps one would devote more time to learning how to be happier. The learning includes many small virtues.

Birmingham Background

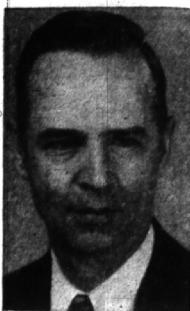
Local History in Story and Picture

As Compiled and Written by RUTH ANNE SILBAR



QUITE A FEW BIRMINGHAM RESIDENTS recall when Woodward avenue was lined with trees and remember the bitter controversy over the Wider Woodward avenue project begun in 1923 when the trees were cut down. People who had been friends for years, but now on different sides of the question, parted in anger.

The photo above looks south toward Detroit and is from the collection of Mrs. Harry Allen. The first home on the right was the old Moses Taber house, now replaced by the A & P store. The next house south belonged to George H. Mitchell, editor of The Eccentric. It is now the American Legion home.



PAUL M. CORP

Hills Resident Named Director

Paul M. Corp, Lone Pine court, Bloomfield Hills, was one of five new directors elected to the Board of directors of American Metal Products company by the shareholders at the annual meeting last week.

AN EMPLOYEE of the company since 1942, Corp was production manager of the corporation from 1949 to 1952 and has been vice-president of the corporation in

David J. Underdown's

DOUGLAS CLEANING COMPANY

534 S. Woodward MI 4-1507

CASH & CARRY

In By 10:00
Out By 5:00

OPEN 7 A.M. to 6:30 P.M.



CERTIFIED COLD STORAGE

For Complete Protection Of Furs & Winter Wools

Call for Pick-Up and Delivery Service

St. Collette Guild Sponsors Tea, Sale

Mrs. Albert Smith is opening her home at 1010 Paritan to a tea and display of Philippine hand ware from 2-5 p.m. on May 11.

The display of wooden ware hand woven place mats and other novelty items, is under the sponsorship of St. Collette's guild, Holy Name Catholic church.

The committee in charge includes Mrs. Margaret B. Lawson, Mrs. William J. Mirzler, Mrs. R. E. Rassel, Mrs. Bard Zimmerman, Mrs. K. G. LaComber, Mrs. Ralph Skinner and Mrs. C. L. O'Neill.

Selling your home? Advertise it in the "For Sale-Houses" columns of The Eccentric.



Will Hear Speaker

The general meeting of Embury WSCS will be held at the church at 8 p.m., May 10. Mrs. John Sweeney and Mrs. James Keegan, hostesses. The program will be a discussion of "World Federation of Women".

Selling your home? Advertise it in the "For Sale-Houses" columns of The Eccentric.



A BLOOMFIELD HILLS resident, Kenneth Yonel, has been named director of divisional relations in General Motors' department of public relations. He will be succeeded in his old post of press and radio relations director by Anthony DeLorenzo.

Call Public Hearing May 17 on Paving

SOUTHFIELD—A public hearing on special assessment costs and paving of Beverly, Beechwood and Lecherbie, will be held May 17 at 8 p.m.

Engineers' estimate of the total cost is about \$15,000, and foot frontage costs will vary from about \$3.30 to \$4 per foot frontage.

Under consideration for paving are Lecherbie and Beechwood from Southfield to Pierce, and Beverly from Pierce to Sheridan.

Change Train Time On Morning Schedule

A revision has been made on the schedule of train No. 72, according to J. J. Buckley, passenger traffic manager of the Grand Trunk Western Railroad.

The train which operates daily except Sunday will leave Birmingham two minutes earlier in the morning at 7:28 a.m. instead of 7:30 a.m. and arrive at Brush street station in Detroit at 8:10 a.m.

Lawrence E. Smith
Landscape Design and Construction
135 N. WOODWARD
in the Wilson Building
Phone MI 4-2036

CANCER Heart Disease

multiple sclerosis

Covers up to \$1,000.00 per person for care and treatment. Pays up to \$10,000.00 per person for Polio and \$5,000.00 per person for 10 other dread diseases. \$25.00 annual premium for entire family.

LAWRENCE MCKAY, Jr.
264 Briggs Bldg.
Birmingham
MI 4-2800

Arrives in Hawaii

Richard D. Sutton, whose wife, having training at Fort Leonard, lives at 25-15 Farmbrook, Wood, Mo. A graduate of Royal recently arrived in Hawaii and is now a member of the 25th Infantry Division army last November.

RECORDS



CLASSICAL & POPULAR

DAVY CROCKETT

Goes To Congress (78 R.P.M.)

• Goes To Congress • At The Alamo
• Indian Fighters
(On 45 E.P.)
directly from the sound track

WALTON'S

JEWELRY & GIFTS

154 W. MAPLE MI 4-3110

Slight Changes In 1955-56 School Areas

Except for three changes, the elementary attendance area of the Birmingham school district will remain the same for the 1955-56 school year.

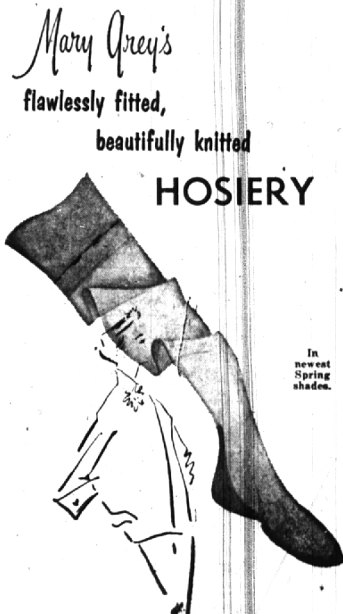
Because of more adequate space at Adams, the pupils north of Buckingham and East of Adams who attended Pembroke last year will be transported to Adams school.

THE BALDWIN area has been

widened to extend to children living in the area south of Lincoln to 14 mile road, east of Southfield and west of River Rouge, which includes the streets of Latham, Catesbury and Norfolk. Last year the Baldwin boundary extended to Lincoln as the southern line. Students of this area during the past year were going to Pierce, but the great increase in the Pierce district resulted in the change to Baldwin.

THE PEMBROKE school will have a change in attendance next year as a result of its former section south of Wattles road which will attend Torry.

In addition, the sector north of the city limits, north of Abbey road, east of Woodward and west of Adams will be transported to Torry.



Mary Grey's
flawlessly fitted,
beautifully knitted
HOSIERY

\$135 to \$165

It's a gift suggestion for "Mother's Day".

These lovely Mary Grey stockings are featured in a complete range of fine gauge hose.

The Glassford Shop

Personalized Service By Graduate Corsetters
Store Hours Daily 9:00 to 5:30

135 Pierce MI 4-5244

The Lady Says "Yes... He Wears



Raw Silk, well done:

COMOSILK, a Lebow exclusive



Cososilk weighs a whisper—4½ ounces to the full running yard. But it speaks with the authority of superlative softtailoring by Lebow. An exclusive Italian import, it exemplifies the look of the Century—Lebow's interpretation of the natural model for Cososilk.

Worthy of note are the dark color tones (carbon gray, carbon brown, carbon blue) and a half-dozen other inviting shades. Illustrated: Three-button, single-breasted model, with center vent and flap pockets. \$115. Wear Lebow's Cososilk to feel the difference.



As advertised in Vogue and The New Yorker

YOUNG'S OF BIRMINGHAM

203 Pierce Street
Open Friday Evenings

\$115.00

To whittle the wispiest you-th... this WARNERETTE!



Here's a Warnerette to bank on for a priceless figure at petty cash! Slimming satin elastic plus the same strong—yet incredibly light—power net that's usually found in much more expensive foundations work real figure-flattering magic. Ribbed elastic waistband. White.

Girdle No. 764 or Pantie Girdle No. 765 \$6.50

Shown with circular-stitched cotton bra No. 21-70 \$2.50

Kay Baum
BIRMINGHAM