

### Hills Designers Included in Film On Architecture

The architectural firm of Shuman, Harrison & Associates of Bloomfield Hills, is one of our Michigan organizations which are included in "Architecture USA," a film on contemporary architecture in America.

The film is being released by the American Institute of Architects from its headquarters in Washington, D.C.

Other Michigan firms which are among the 62 leading architectural organizations in the nation included in the film are: Lowmiller, Yamasaki & Helms of Detroit and St. Louis, Mo.; Alden H. Bow of Midland; and Victor Green & Associates of Detroit and Los Angeles, Calif.

### New Corn Machines

The first fully mounted, one-row corn picker and corn harvester designed for use on four-wheel farm tractors, were announced recently by Ford Motor Company. The new machines are in production at Wood Bros. Inc., Des Moines, Iowa, a Ford farm machinery manufacturing plant.

### Return to Reside After Three Years

Ernest R. Baldwin and family have returned to reside in Birmingham after three years of residence in St. Louis, Mo.

The Baldwins, who formerly lived on Lakeside drive, now live at 255 W. Rook. Prior to moving to Birmingham, Baldwin lived in Berkeley where he was mayor for 10 years. He is employed by the Lakeland Steel company as sales engineer.

Thousands of people read The Eccentric Classified Ads. So remember, if you want to sell that hard-to-get-rid-of article, advertise it in the Want Ad section of The

**GLENN WING POWER TOOLS**

- Atlas • Delta
- Porter-Cable
- Shopsmith
- DeWalt Saws

1127 SOUTH WOODWARD  
Four Blocks North of 14 Mile Rd.  
BIRMINGHAM, MI 4-0444  
Daily 8 to 6:00—Fri. 8 to 2:00

**GIVE YOUR CAR THAT SPRING GET UP AND GO!**

\$7 Value For \$6

- Tire Cross ..... \$2.00
- Radiator flushed ..... \$1.25
- Oil Changed (5 qts) ..... \$2.25
- Lubrication ..... \$1.50

Stop in Today and Take Advantage of this Special Offer!

**BOB ADAMS SHELL SERVICE**

AAA MI 4-9750  
Hunter at Maple

**Firestone DEALER**

All their lives they'll thank you for this **GRADUATION GIFT!**

**a Smith-Corona PORTABLE TYPEWRITER**

- It's the world's fastest portable — with 39 wonderful features for smooth typing!
- The speed of an office typewriter... a full size keyboard... long-lasting beauty and dependability — in a Smith-Corona portable!

Easy to buy! Only \$125 a week!

ALL OTHER MAKES IN STOCK

**BIRMINGHAM PRINTING AND OFFICE SUPPLY COMPANY**

369 East Maple  
Midwest 4-4740

### Ready to Launch County-Wide Study On Buyers' Habits

The proposed county-wide consumer buying habits survey will get under way within the next week.

The retail steering committee has approved the final draft of the questionnaire which is now ready for distribution.

All children in grades 1st-9th in both the public and parochial schools will receive a questionnaire which of parents are asked to fill out and return to the school within 48 hours.

Parents will be asked questions covering their buying habits pertaining to at least 24 types of merchandise, types of stores in the various communities, plus length of residence in the county, place of employment and size and age of family.

The material is expected to answer such questions as:

- Where are the major retail shopping centers in the county and what are the market areas served by them?
- Why do people make their purchases where they do? What role do parking and road conditions play in shaping public buying habits?
- What percentage of Oakland residents work outside the county?

### 'Biddor's' Annual Picnic Announced

Announcements for the seniors' picnic, John H. Lundblad, program chairman, have been mailed giving the schedule of the annual "Biddor" picnic.

A day of "fun, food and refreshment" is planned for the group with Tam O'Shanter country club as the setting, Thursday, June 9, is the date.



**FIRST CUSTOMER** to get a piece of the 320-pound birthday cake of the Birmingham branch of Kroger stores is Mrs. Leslie L. McRobert, 925 W. Wattle. Kroger employee Betty Shaw did the cake cutting during the second anniversary of the store at its present location on Maple at Hunter. About 800 pieces were cut from the six-tier cake.

### Lack Lowrie Given Chrysler Trophy

Chrysler Corporation has awarded a desk trophy to Jack Lowrie of Schute Motors, Inc., in recognition of his work as conference leader in an advanced training program for automotive mechanics.

Notification of the Tech Trophy duty in training in modern service came this week from W. B. Rice, methods for Chrysler Corp. administrator of a nationwide pro-gram under which more than 70,000 mechanics have received off-duty instruction in modern service methods for Chrysler Corp. cars.

### Sherman Products Reorganizes Board

**ROYAL OAK**—H. A. Strong, Sherman Products Inc. manufacturing manager, was one of three persons named to the firm's board of directors last week.

Reorganization of the company's board was necessitated by the death in April, 1954 of the firm's founder, George B. Sherman.

The board also re-elected the company's administration, including W. A. Roman, president; W. F. Beckman, vice president; and V. J. Crampton, secretary-treasurer.

The Birmingham Eccentric office hours are: 8:30 a.m.-5 p.m. Monday thru Friday, 8:30 a.m. to noon Saturdays.

**LINOLEUM**

For Replacement or New Installation

**FREE ESTIMATES EXPERT WORKMANSHIP**

Complete selection of Armstrong and other nationally advertised makes.

**T. E. HOGAN CO.**  
2865 Woodward Ave.  
3 Blocks South of 12 Mile  
LI 4-3300 Open Fri.—9 p.m.

**Folders - - - ?**

**YES... IN BLACK AND WHITE OR 4 COLOR PROCESS**

Three Detroit Salesmen . . . TR 5-2629 . . . Plant MI 6-2000

**The AVERILL PRESS INC.** of Birmingham  
A COMPLETE PRINTING SERVICE—FROM TYPESETTING TO MAILING

FORMERLY THE BIRMINGHAM ECCENTRIC PRINTING DEPARTMENT

## CHET SAMPSON HAS A FEW OPENINGS LEFT ON HIS BOYS' TOUR TO CALIFORNIA

July 30-Sept. 3 Total Price: \$375.00

Includes: 14 States and 9 National Parks: Yosemite, Zion, Bryce, Grand Canyon, Yellowstone, Teton, Mesa Verde, Wind Cave, Rocky Mountain National Parks; Hollywood, San Francisco, Las Vegas, Salt Lake City, Hoover Dam, Laguna Beach, Reno, Mt. Rushmore, Black Hills, Bandlands, Colorado Springs, Petrified Forest, Lake Tahoe, etc.

This is the same tour which 150 Birmingham boys and girls have taken during recent years.

Contact: **CHET SAMPSON'S TRAVEL SERVICE**  
100 Kercheval Ave. Grosse Pointe 36, Mich.

**For a Happier Holiday Trip Phone Ahead by Long Distance**



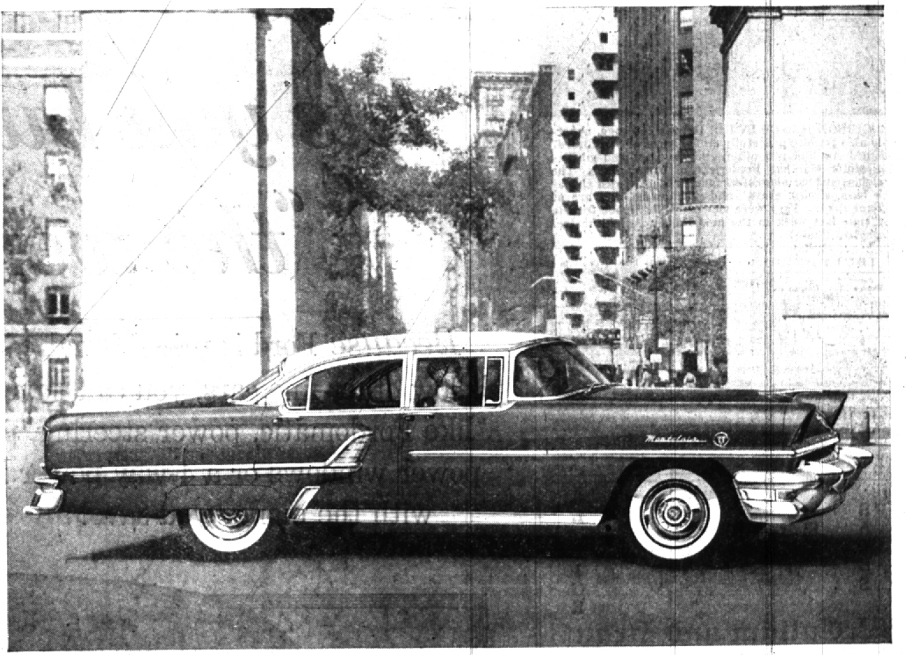
Enjoy your carefree holiday trip. Don't let uncertainty spoil it. If you've asked for reservations, make sure of them by Long Distance before you leave.

If you're going visiting for the holidays, let the folks know by Long Distance when to expect you. Especially if you're leaving later than you planned. Then they won't worry when you're late.

Long Distance is fast and its cost is surprisingly low.

Don't wonder • Don't worry • Call today and be sure

**MICHIGAN BELL TELEPHONE COMPANY**



ALL-NEW MONTCLAIR 4-DOOR SEDAN, latest member of the Mercury family, combines low-silhouette "hardtop" styling with true 4-door convenience. Another reason why Mercury sales are soaring.

## Look at the break you get because Mercury is breaking sales records

**1 YOU GET MORE MONEY FOR YOUR PRESENT CAR**

Mercury's record-breaking sales allow us to operate at high volume. You get a far bigger allowance.

**2 YOU GET MORE NEW CAR FOR YOUR MONEY**

Prices for a big, 188-hp Mercury Custom 2-door start below 13 models in the low-price field.\*

NO OTHER CAR OFFERS YOU BIGGER REASONS FOR BUYING IT

- Exclusive styling shared by no other car
- New SUPER-TORQUE V-8 engines on every model (188 and 198 horsepower)—backed by Mercury's record of producing V-8 engines exclusively
- 4-barrel vacuum carburetor on every model at no extra cost
- Dual exhausts at no extra cost on all Montclairs and Montereys
- Ball-joint front-wheel suspension
- Anti-fouling high-compression spark plugs
- Consistently highest resale value in its field, according to authoritative reports

IT PAYS TO OWN A **MERCURY** FOR FUTURE STYLING, SUPER POWER

Don't miss the big television hit, Ed Sullivan's "TOAST OF THE TOWN" Sunday evening, 7:00 to 8:00. Station WJZB-TV, Channel 7. Also, be sure to see "PRODUCERS' SHOWCASE" next Monday evening, 7:00 to 8:00. Station WWTN-TV, Channel 4.

**BOB FROST, Inc.** 850 S. WOODWARD AVENUE, BIRMINGHAM, MICH. PH. MI 6-2200