

### Agree on Eton Widening Plan

Most of the details involved in the widening of Eton, from Lincoln to Yosemite, appeared to be worked out this week by the Birmingham city commission.

At an informal hearing Monday night, it said it would go into formal hearings on the basis of a 41-foot pavement with parallel parking only along the east side.

Residential lots to the west would pay 75 per cent of the 5 1/2 feet required to widen the west side to a normal residential street. The additional six feet, plus the extra thickness and the entire widening of the east side, would be charged against industrial properties.

GROCERY OWNER Clark J. Hallock suggested angle parking along the east side, or still greater widening so parking could be permitted along the west side, with industrial land paying for the extra parking.

His suggestion was acceptable to the commission, but it was dropped when no other property owners The additional six feet, plus the



**GEORGE A. LYON, JR.**, 250 Lake Park, was elected to succeed his father as president of Lyon, Inc., at a meeting of the board of directors last week. G. Albert Lyon, Sr. became chairman of the board.

The company has specialized in the field of stainless steel products for 25 years and is today the largest user of stainless steel in the world. It includes among its products, wheel covers, donut discs, and trim rings as original equipment for the automobile industry and its accessories for the consumer market.

Lyon was graduated from Mercersburg Academy and entered the company in 1910 after attending Wharton School of the University of Pennsylvania. He became vice president prior to entering service. He returned in 1916 and has worked in all phases of the business.

### Seek to Prevent Stores Along N. Adams Road

A detailed resolution outlining the city of Birmingham's reasons why a 16-acre triangle in Troy township should not be rezoned to commercial use is expected to be passed tonight at an adjourned meeting of the city commission.

Ten days ago, the Troy board changed the permitted land use of the controversial area, which brought immediate protests from 151 Birmingham residents to the west.

The triangle lies east of Adams, north of Derby.

Developers have tried to obtain city sewer and water services, even at the point of annexation to the city. This met objections of Troy township, which wants to hang onto the area.

THE CITY'S special resolution will be addressed to the Oakland county plan board, which the city contends must approve the rezoning.

Commissioner Dean C. Beier forecast a court case either way the decision ultimately goes.

Birmingham board of education also may step into the fray. It is building a junior high school south of Derby, and may protest the rezoning as being detrimental to a sound educational program.

With the same argument, the board successfully held off a commercial project which once was proposed immediately west of the high school at Lincoln and Cranbrook roads.

### Highways to Have Radio Car Patrols Memorial Weekend

With the approach of the Memorial Day weekend, Oakland county Red Cross is again preparing its special highway help program.

The program which proved so successful last year will be repeated, with radio-equipped cars from the Pontiac Amateur Radio club assigned to patrol highways. Each car will be staffed by two first aid instructors.

Other cars will be stationed throughout the county in known high-accident areas to offer aid in highway mishaps. The entire program is prepared in cooperation with the sheriff's office and police departments in the county.

### Buddy Poppy Sales

Birmingham's Veterans of Foreign Wars have received city commission approval to conduct their street sale of Buddy Poppies on May 26. Post Commander Owen Clark said that, in the event of rain, the sale would be held Friday.

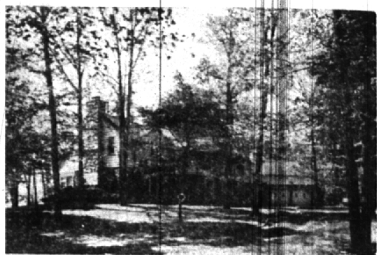
### Crockett at Kresges

Kresge's own "Davy Crockett" will be at the West Maple street store tomorrow from 4 until 4:30 p.m. It was revealed this week by Henry Sellers, manager.

Davy, just back from the wild frontier, will have Davy Crockett souvenir buttons for the children, Sellers said.

You will find many bargains in The Eccentric Classified Columns.

## DISTINGUISHED FARMHOUSE COLONIAL



Small Estate—five, artistically landscaped acres. High rolling, with a perfect setting of tall, stately trees for maximum privacy and comfort.

Custom Built Residence Includes:  
 Large living room, 29 x 17.6. Splendid dining room, 15.4 x 16.4. Paneled library with corner fireplace. Modern kitchen and butler's pantry.  
 Five Bedrooms and Five Baths.  
 First floor powder room. Spacious entrance hall. Huge porch overlooking gardens. Abundance of closets with built-ins.  
 Washer and dryer, carpets and drapes. Built 1939. Architect—Wachler of Toledo.

Additional Special features:  
 Two wells on the property. Separate buildings on grounds include: well house, dog run, chicken house, storage barn for tools, 2 box stalls for horses.  
 Mayfair telephone exchange, Birmingham postal service. Priced below \$100,000.

## Watt, Manuel & Snyder, Inc.

298 South Woodward  
 Midwest 4-6300  
 Realtors  
 Birmingham, Michigan  
 Jordan 6-2323

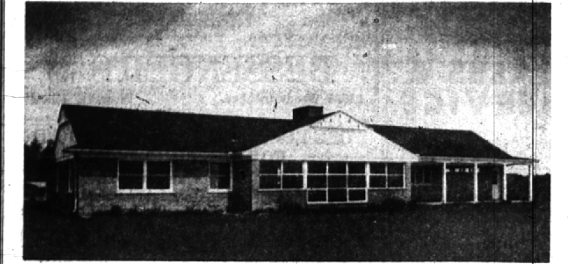
### YOUR OWN FULL TIME BUSINESS PERMANENT! PROFITABLE!

Get into the world's biggest business—REAL ESTATE—with the world's leading country real estate agency — STROUT REALTY.

Strong support provided through our internationally famous catalog, newspaper advertising and big city interviewing offices. If you're mature, friendly, ambitious, dependable and trustworthy, willing to work on commission and have had selling experience, write today for full details without obligation.

**STROUT REALTY AGENCY**  
 7 So. Dearborn St. Chicago 3, Ill.  
 OFFICES COAST-TO-COAST

### LOOK DOWN UPON THE SKYSCRAPERS OF DETROIT



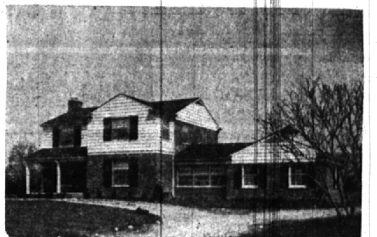
Not from an airplane, but through your own living room windows, you have this twenty mile view!

Three spacious bedrooms, 2 1/2 baths, 2 car attached garage, utility room on 1st floor. Partial basement, many built-in features and a lovely kitchen with all modern conveniences.

\$39,500.00

**WALSH, JAMES & WASEY CO.**  
 Realtors  
 431 S. WOODWARD AVE., BIRMINGHAM  
 MIDWEST 4-6500

## ARRESTING IN ADDRESS AND APPEAL



This exceptionally attractive home has everything to offer: Built just three years ago on a large lot, exceptionally fine landscaping, surrounded by mature trees, back yard with a grille, brick fenced, and an interior in which extra care has been given to details.

Recreation room in the full basement has knotty pine walls, tiled floor, acoustic ceiling.

The living room, with its large bay, features a mirror over the marble fireplace.

Formica counter tops in the kitchen, first floor powder room, fine dining room.

Upstairs are three large bedrooms.

In addition are mercury switches, copper plumbing, carpets, an oversized two-car garage. One of our finest areas, near the school.

BLOOMFIELD HILLS—the owner has lived in this new Colonial less than a year and is now being transferred. Beautiful lawn and shrubs, impressive circular drive.

Four excellent bedrooms with two tiled baths. Large library, separate breakfast area, powder room. For plenty of expansion in entertaining; 25' living room with a fireplace, full dining room, first floor activities room, basement recreation room.

Near St. Hugo and Vaughan Schools. There is no other house of comparison in the Hills for the money—\$46,500.



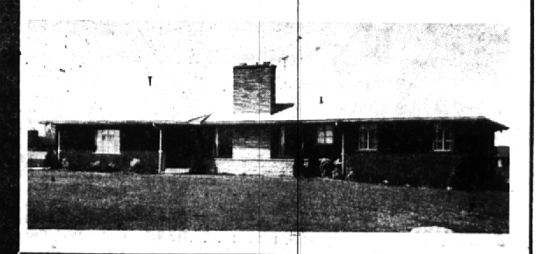
Ideas Unlimited—Space will not permit listing all the features, here are the high-lights:  
 Step-down living room with brick fireplace wall, Thermopane windows, built-in corner davenport, carpeted, oak-beamed ceilings.  
 Kitchen of tomorrow. Slate floors in the dining area and halls.  
 Beautiful paneling throughout—Japanese ash, mahogany, fir.  
 Three lovely bedrooms, two beautiful baths.  
 You have never seen a home more easy to keep spic and span. A half-acre location with trees completes the picture. Seldom do we have such a fine modern home at just \$31,000.

Five Bedrooms, Three Bath Ranch  
 Deluxe home on nearly four acres of beautifully landscaped lawn, a location where you may keep horses. In addition to the five bedrooms and three baths:  
 Huge paneled family room with built-in bar, television, and fireplace.  
 Also fireplaces in the living room and den.  
 Screened porch, utility room. Full separate dining room. Parquet floors, copper plumbing, weathered storms and screens, plus other appointments that make this a home of distinction.  
 Your children will attend Vaughan School.

### MAYBE DEALS???

"Maybe" sales are notable for too-low deposits.

Weak terms. Poorly drafted sales agreements. Bad contingency clauses. We don't condone them. If you want competent advice and counsel about your real estate problems, see us and do business with truly qualified realtors of known experience and integrity.



... and enjoy life just a little bit more. There's a touch of the "wide open spaces" here. More than half an acre. Still—you and the children won't be lonesome, because there are neighbors—not too near, and not too far. For your every-day living convenience, you'll have:

3 bedrooms, 1 1/2 baths. Double closets.  
 Dining area has built-in China cabinets; picture window.  
 Full basement with lovely ledgerock fireplace. (2 fireplaces in all).  
 New grey carpeting is included, drapes, too. Attic fan. Calculator.

Your children will go to Bloomfield Hills schools. This home definitely has much to offer. Why not make that appointment today.

Our Integrity Merits Your Confidence In Us.

**SNYDER KINNEY & BENNETT**  
 Realtors  
 239 S. Woodward  
 Midwest 4-7000

## Watt, Manuel & Snyder, Inc.

298 South Woodward  
 Midwest 4-6300  
 Realtors  
 Birmingham, Michigan  
 Jordan 6-2323