

### Five Assessment Districts Draw Action by City

Five special assessment districts drew the Birmingham city commission's attention Monday night.

It indicated it expects to confirm on April 25 the special assessment for paving Edgewood between Lincoln and Catalpa.

City Manager D. C. Egbert said he at that time would report on the advisability of improving several other streets in that southern part of the city.

In order for them possibly to include Cedar as part of such area improvement, commission Monday night reconsidered its March 21 action in denying necessity for paving Cedar, then tabled the hearing.

ROLLS FOR new sidewalk on Northlawn, between Bates and Washington and Shipman and Maryland, met approval. The A \$160.52 deficiency assessment

roll for sidewalk on Gracefield and N. Eton was passed. This roll includes several individual assessments for amounts less than \$1,000 and will be paid by the city at large because it is more economical to pay than to send out the several assessments.

A new water main on Worth between Webster and Haynes is to be paid for in one installment, the commission determined.

CONFIRMATION was made of the paving of Webster, from Adams to Hunter, and of Worth from Hunter to the alley north of Webster.

City officials said this paving, although levied in three annual payments, could be put in this year if one large property owner immediately paid his assessment in full.

This owner is the Briggs Commercial & Development Co. which is building a new structure for Wrigley's supermarket, at Hunter and Webster.

Household goods of every description are offered for sale in the Classified Columns of The Birmingham Eccentric.

### Fire Stations Get Bronze Plaques

Approval was obtained from the City Commission on the recommendations of V. W. Griffith, Chief of the Fire Department and W. B. Edwards, architect, for the

installation of bronze plaques on the Adams and Chesterfield fire stations, whose completions are being rushed.

The \$200 plaques will be dedicated at the Adams station in memory of Chief William G. Olsen who served from 1915 to 1951, and at the Chesterfield station in memory of Fire Inspector Lee C. Carroll who after 12 years of service was killed in the line of duty December 31, 1949.

### Art Sale Okayed

By a vote of 4-2 the City Commission this week granted per-

mission to the Birmingham Society of Women Painters to hold a sale to 6:00 p.m., or in case of rain, of paintings in Shain park on May 21.

## DARING AND DIFFERENT



This California Redwood and brick Contemporary nestled into a Franklin hill boasts a superb view in any direction.

Its refreshing floor plan defies description and will be stimulating to the jaded home seeker who is looking for "something different".

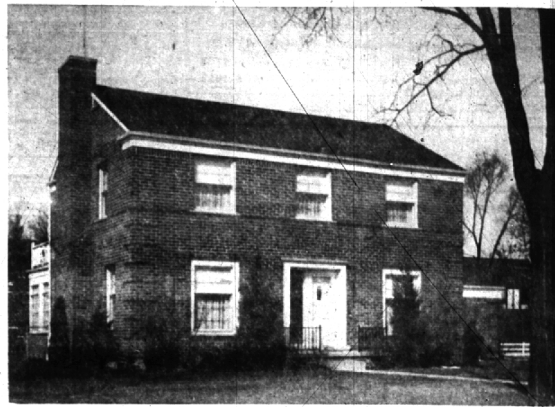
The house is large throughout—from its tremendous Thermo paned living room to the low level play room. Four good bedrooms on upper level, two porches — one has a grill for broiling steaks — spacious grounds.

This home will keep pace with the times for years to come and will afford country living in the modern manner to the discriminating buyer.

**Benjamin & Stephens, Inc.**  
REALTORS

259 S. Woodward MI 4-3232 Birmingham, Mich. JO 4-5728  
Open 9 A. M. to 9 P. M.

## IT'S DIFFERENT



Here it is. That nearly new brick Colonial with a downstairs bedroom and a downstairs bath.

Located in the ideal residential area of Bloomfield Village, this home was custom built by particular people. They wanted a downstairs bedroom—with three bedrooms on the 2nd floor.

Too, there's a den, a recreation room, a fenced yard and the extra large breakfast area will supply space for a growing family.

A home of serenity, comfort and stability. Call us for an appointment to see it today.

\$35,700

**WALSH, JAMES & WASEY CO.**  
REALTORS SINCE 1918

431 S. Woodward Ave. Birmingham MI 4-6500  
Detroit phone JO 4-6033

### BUSINESS SITE and BUILDING

For Sale, Northeast corner of Woodward and Humphrey. 1,700 square feet plus parking space and alley. \$29,750.

**SNYDER, KINNEY & BENNETT**  
239 S. Woodward Midwest 4-7000

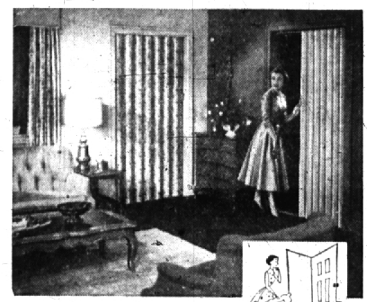
Let Me Build Your Home  
**HENRY M. HENDERSON**  
GENERAL CONTRACTOR  
Custom Building—Remodelling

Free Estimates Gladly Given  
VE 6-1847 or VE 6-1833  
13951 Warwick, Detroit 23

**ROBERTSON & SON BUILDERS**  
Hillside Duplication Model  
NOW OPEN

We are now specializing in custom hillside homes. The Hillside Duplication Model is open 3 to 4 daily and Saturdays. Model is located at 1266 LENOX RD., Kentonville Sub. Drive out Adams to Lenox (1 block south of Square Lake Rd.) turn West 1 1/2 blocks to Model. Prices also given on custom building in Birmingham and Bloomfield. WE HAVE a few nice hillside lots available to build on. Your plan or ours.

ROBERTSON BUILDERS MI 6-2155



Why let problem doors decide your decorating scheme?

MODERNFOLD'S NEW SPACE-SAVING DOOR BECOMES PART OF YOUR DÉCOR!

The new "Spacemaster" door by MODERNFOLD does away with space-stealing door-swing...inspires fresh, delightful decorating ideas for every room. Covered with beautiful washable vinyl fabric, it blends beautifully into any color scheme. But look—this wonderful folding door may be "slip-covered" without sewing...or painted with rubber-base paint! The interior steel framework assures balanced action and graceful folds. Come in today for a demonstration.

Easy to install...you can do it yourself in less than thirty minutes!



**Birmingham Lumber AND SUPPLY COMPANY, INC.**  
1025 HAYNES STREET  
PHONE MI 4-3636

Between Hunter & Adams — 5 Blocks South of Maple  
Hours 7:30 to 5:00 Mon. thru Fri.; 7:30 to 1:00 Sat.

## CHOICE LIVING

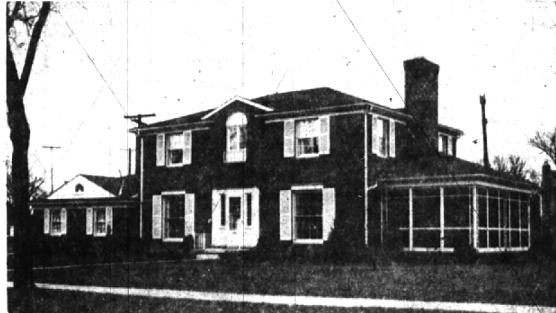
BLOOMFIELD VILLAGE

Two year old, red brick Colonial, in the very best condition. On a 125' lot, in the area's most desirable location.

Four Big Bedrooms and Two Tiled Baths  
26' living room, with fireplace; Full dining room  
Breakfast corner in the wonderful kitchen  
Library; Powder room; Screened porch  
Full basement with recreation room space

A few of the many outstanding features:  
Mueller Climatrol Gas Heat  
True air-conditioning with double duct system  
Built-in television, radio, phonograph console  
Automatic garage door opener; Disposal, dishwasher  
Carpeting throughout—in all rooms except kitchen  
Bloomfield Village low taxes.

Call us for an appointment. Also open Sunday 1:30 to 5:30.



### OVERLOOKING THE RIVER ROUGE.

Unusual — Four Bedroom, Four Bath — Ranch

The Spacious Interior  
Master bedroom 21 x 12 1/2, plus complete dressing room and private bath  
31 x 24 Paneled Family Room, with bar and indoor barbecue  
Library, expertly paneled, 12 x 13. Two beautiful fireplaces.  
24 x 15 living room. Separate maid's room.  
Two-zone heating. Air-conditioning.  
And other inclusions so numerous they must be seen to be appreciated.

The Well-Maintained Exterior:  
250' x 321' lot, fenced. Concrete, circular drive.  
Complete underground sprinkling system. Expert landscaping.  
A heated building for summer guest house or hobby shop.



### YOUR LAWN JOINS THE GOLF COURSE

Two acres of fine old trees frame this nearly new, rambling brick ranch, in an ideal location with Birmingham School bus at your door, and walking distance to the Commuter.

The large living room is airy and bright. Paneled Family Room has "out-of-this-world" built-in features, with a separate entrance. Both rooms have a fireplace.

Huge Florida porch is screened, with a built-in barbecue. Up-to-the-minute Kitchen with Thermador oven, stove, and grill.

Three exceptionally fine Bedrooms. Two tiled Baths, deluxe with built-in vanities. Also a powder room.

In fairness to yourself, let us show you the many custom-done inclusions.



## Watt, Manuel & Snyder, Inc.

298 South Woodward Midwest 4-6300  
Birmingham, Michigan Jordan 6-2323