

## Art Students Win \$350 For Sketches Of Water Tower

CRANBROOK — Design ideas for a possible observation tower on the Cranbrook grounds have earned \$350 in prizes for three art students, Henry S. Booth, chairman of The Cranbrook Foundation board of trustees, has announced.

First award of \$200 went to Leon B. Yulkowski, Ferndale; second of \$100 to Hugh Acton, Scotts bluff, Neb.; and third of \$50 to Edward E. Milota, Cleveland. The competition was restricted to students of Cranbrook Academy of Art, Bloomfield Hills, Mich.

THE PROJECT resulted from

criticism of the appearance of Cranbrook's water tower in relation to neighboring buildings and the belief that this vital facility for institutions enrolling 900 students and serving tens of thousands of visitors annually may be greatly improved in appearance when sufficient funds are raised. As designed by the students, the observation tower would house the present water tank, and include various public facilities. Lack of funds, however, precludes building such a structure at present.

## Alley Hearing Set

Second hearing, calling for construction of an alley at 14 Mile and Pierce at an estimated cost of \$2,510 under special assessment procedure, will be held April 18 by the Birmingham city commission.

## Symphony Includes Three Local Tenors

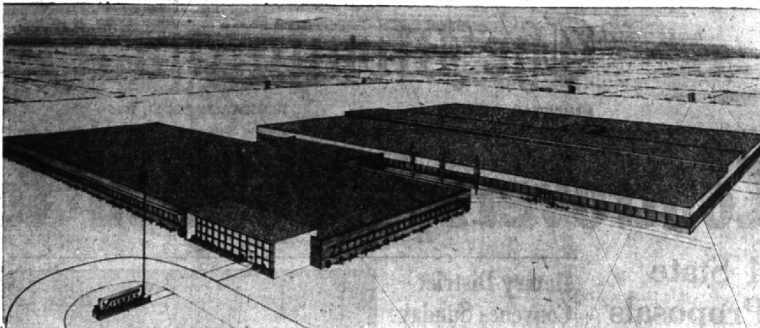
Three Birmingham students will be among the 119 teen-agers comprising the Michigan Youth Symphony that will give a spring concert April 9 at the Rackham Educational Memorial in Detroit.

They are Arthur Plaxton, 920 Southdown road, and Daniel and Dorothy Rodgers, 952 Wimbledon.

## Methodists Win Title

Basketball play closed in the YMCA church league with First Methodist Church defeating the Congregational quintet 52-37 for the title.

Methodist had a 28-15 lead at halftime and eight players took part in the scoring attack, led by Johnson with 17 points.



Early in 1936 Vickers, Inc. expect to occupy their new engineering and administrative building on a 76-acre tract at Crooks and Maple roads. The sketch (above) is an architect's perspective of the 150,000 square-foot structure. The building will house engineering facilities

as well as some executive and sales offices. A working force of about 600 will be accommodated. Vickers builds oil pumps, motors and cylinders and controls for industrial, automotive and aircraft and marine applications.

## Absentee Voters' Deadline Saturday

LATHRUP — City Clerk Florence Bennett reminded residents this week that Saturday at 2 p.m. is the deadline for absentee voters to mark their ballots and turn them in to her at the village office. Mrs. Bennett said the village office will also be open from 8 until 5 p.m. today and tomorrow to handle any absentees who have not yet voted.

## Student Councilman

SOUTHFIELD — Thomas G. Sawyer, son of Mr. and Mrs. Glenn L. Sawyer of 10023 Elizabeth Rd., has been elected by the students to serve on the student government council at the University of Michigan.

Sawyer, a sophomore, is a member of Psi Chi and Delta fraternity.

For your convenience

## New store hours

7 a.m. to 7 p.m.

**Ridley**  
CLEANERS

361 E. Maple  
near Woodward

# A FINER Bloomfield

FASHION SHOP

1662 S. Telegraph Rd.

PARK AT OUR FRONT DOOR!

## SPORTLEIGH

fashions the perfect tailored Spring coat

in Warren of Stafford fleec

beige, pastel pink,

pastel blue

\$59.95

in navy, pink, and

blue tweed

\$49.95



## Separates

by Susan Thomas

in silk pongee

fashions newest silk, smart prints and solid colors, to mix and switch

### BLOUSES

\$10.95

### SKIRTS

\$14.95

Skirts are taffeta lined

SIZES 10 to 16

## Quiz

(Continued from Page 1, Sec. 5)

are now in preparation against the various communities responsible for abatement. Persons who are responsible for pollution should be held responsible for abatement of that pollution.

"WE IN THE health department are convinced that there will be a health problem here in the future if you do not make the correct decision," Donald Pierce said.

After talks by the various state and local authorities, the town meeting was thrown open to a question and answer period. Some of the top questions asked by the audience, the answers received, and who gave the answers, are listed below.

**WHERE** does the pupping area start for those people who are not inside the Evergreen Interceptor district?

One and one-half miles on each side of Evergreen (which are also the boundaries of the district)—Roeser.

**WHAT** will Southfield's share of the interceptor sewer cost be? Southfield's cost will be \$1,603,950 of the total \$2,740,000—Roeser.

**WILL** the Evergreen Interceptor sewer carry storm water? No—Roeser.

**WHAT** will be the cost to each home-owner for use of the interceptor and for laying laterals? It would be quite a bit in some cases—Main. (A member of the audience arose and said that he figured the cost would run anywhere from \$150 to \$1,000 for each property owner, according to the distance each owner lived from a trunk line.)

**WHO** will maintain the interceptor? Some of these other drains are the center of arguments as to who maintains them and some of them are not functioning properly.

The interceptor will be strictly a gravity flow and good connections and good material would mean little cost in upkeep. Some of these other drains are old and were not constructed properly—Roeser.

**TO WHAT** extent is Southfield township polluting the Rouge river?

Mainly in sections one and two, but there are also half-a-dozen other areas in the township which are responsible for pollution—Adams.

**HAVE** the courts ever taken over when a community was in default? The court doesn't seek to force one method over another, but seeks only to abate pollution—Mrs. Booth.

**HOW MUCH** of the millage will go for the Evergreen Interceptor? One and one-quarter mills for 20 years would lack \$5,000 of meeting our cost, and if assessed valuations in the township went up by \$1 million, we would have a little over—Swem. (Roeser added that estimates indicate that assessed valuation in Southfield will go up by \$12,000,000 in 1936 alone.)

**WHAT IS** the distinction between trunk lines and laterals? That would have to be set by ordinance. But I think everyone should get as close to a trunk line, (paid for by the entire township) as those in the Evergreen Interceptor district are to the Evergreen Interceptor sewer—Swem.

**IS IT TRUE** that Southfield is paying an allocated cost on the basis of 40-foot lots? No. Patterns set by those home lots already in the area determine the size used for allocation purposes. If they are large lots then allocation was made on the basis of large lots—Roeser.

**WILL FRANKLIN** residents have to pay part of the cost of the Evergreen Interceptor sewer? Yes—Roeser.

**WILL THERE** be a charge for tapping into a trunk line? We don't know yet—Roeser.

**ROESER** added that the township hopes to pay off the bonds in less than 20 years.

Population charts, provided by area water departments, the Detroit Edison Company and the Detroit Regional Planning Commission, showed a great increase was expected in Troy, Southfield and Bloomfield townships, and a lesser addition in population in Birmingham and Bloomfield Hills. No figures were available for Lathrup Village.

**THE CHART** showed the expected increases from 1934 to 1970 are as follows:

## Motor Behemoths Collide In Troy

TROY TOWNSHIP—One gravel truck was almost totally wrecked and the front end of another was smashed when the two collided last week on Dequindre at John R. according to Township Police Chief David Grattop.

Peter Capone, 42, of Detroit, one of the drivers, was thrown from his truck, which lost its rear axle and crashed into a tree after the collision with a truck driven by James L. Hartsuff, 28, of Berkley.

Grattop said Hartsuff was following another gravel truck and pulled out to pass when he hit Capone's fully loaded southbound truck.

CAPONE'S life was saved when he was thrown from the cab which was crushed on impact with the tree, according to Grattop. Capone was treated at William Beaumont Hospital for bruises of shoulder, chest and leg.

Hartsuff, uninjured, was cited for failing to have a chauffeur's license. A heavy-duty wrecker from Pontiac had to be called from Pontiac to clear the debris.

## Gun Wound Fatal To Troy Resident

TROY — Henry Feldman, 62, of 531 Deinar, died early Wednesday at St. Joseph Mercy hospital, of a gunshot wound which police believe was self-inflicted.

According to Police Chief David Grattop, Feldman was despondent because of ill health. He was found by his family in a garage at his home.

## Plan Widening Eton

Necessity for widening Eton between Yosemite and Lincolns will be considered at the April 18 meeting of the Birmingham city commission.

Troy township from 13,000 to 45,000; Southfield township, from 22,500 to 85,000; Bloomfield township, from 8,500 to 28,500; Birmingham, from 22,000 to 25,000; and Bloomfield Hills, from 1,800 to 3,500.

It will be these increases that will, officials hope, lighten the sewer cost load from those now living in the above areas.

EXCLUSIVELY OURS IN CHICAGO

Pay a little more to get a lot more, in new spring

## Le Bow

CUSTOMIZED SUITS

If you analyze cost in terms of return . . . you'll find that Le-Bow clothes bring you more distinguished style . . . more comfort of fit . . . more long satisfaction wear per dollar than any other clothes you can find.

Le-Bow Suits Priced from \$85 to \$150.00

## YOUNG'S OF BIRMINGHAM

203 PIERCE STREET  
OPEN THURSDAY AND FRIDAY EVENINGS



**NOW AT SHAIN'S**

**10 DAY FREE TRIAL**

The only ball point pen to give you a choice of 4 points!

THE NEW **Parker Jotter** \$2.95

choose the point that suits your style of writing!

Extra Fine  
Fine  
Medium  
Broad

- Writes 5 times longer than ordinary ball point pens
- Jewelry finished metal parts
- Beautiful, slim nylon barrel in 4 colors can't wear, chip or break

**SHAIN'S Rexall DRUGS**  
GOOD HEALTH TO ALL FROM REXALL