

Mark Scouting's Founding Here

District officials of Girl Scouting will join some 200 members of Quorton School Girl Scouts and Brownies in watching a folk dancing routine epitomizing dances where Scouting flourishes.

Mrs. John St. Clair, district chairman will head the officials, who include Mrs. James Keene, her assistant, and Mrs. Lee Hanson, secretary. Grant Barber, school principal and Mrs. Philip Cartright, a folk dancing expert will also attend.

Mrs. Cartright has directed the girls in formations for dances representing the Welsh, Czechoslovakian, and Dutch nationalities, as well as American square dancing.

TROOPS 339, 330, 354 and 342 will do the dances, while 343 sings songs, and 430 does a pseudo-radio skit tying the ideas together. In a climactic birthday ceremony, troop 371 will officiate as a scout from each troop gives her troop's box of contributions to the fund named for Juliette Low, founder of Scouting.

A LAMP SHADE
that fits the base makes the lamp.
We have some 500 patterns from which to choose.

RUTH HAIGH

165 Pierce (Open Daily 9 to 5, Fri. 9 to 9) MI 4-2002

- Lamp Shades Made To Order
- Lamps Wired
- Fine Old Prints
- Picture Framing



BIRMINGHAM'S MAYOR, Charles Renfrew (right) receives his specially engraved plaque from Thomas Mitchell, Academy Award winning Hollywood star, at a gathering of 40 mayors from the Detroit area. Mayor Cobo of Detroit, spoke during the televised program on the Civic Center project and the Expressway. Mitchell was in Detroit for the premiere showing of his TV series, "Mayor of the Town".

Kyes Home Gives Contrast In Setting for Floral Types

"Belwood", the Cranbrook Road estate of Mrs. Roger M. Kyes, has been selected for the March meeting of the Bloomfield Hills Branch of the Woman's National Farm and Garden Association.

It will be a perfect setting for the practical workshop that will be held at 1:30 p.m. on March 7 under the leadership of Mrs. J. Hawley Otis, President, and Mrs. Edgar B. Flint, Program Chairman.

The meeting will take place in the new contemporary wing that Mrs. Kyes has recently added to her traditionally English home.

HERE THE CENTER of interest is a large "family room" with floor to ceiling glass walls. From this expanse of window the view travels far into the distance, crossing the lawn and disappearing into a woods of magnificent old trees.

Delbert F. Adams will lead the workshop with a talk on "Freedom of Flowers". Following his lecture he will demonstrate actual flower arrangements suitable for both the contemporary and traditional wings of Mrs. Kyes' home.

Mrs. Kyes has asked four friends to pour at the St. Patrick's tea that will follow the meeting: Mrs. Theodore O. Yntema, Mrs. Perry Williams, Mrs. Howard H. Robinson, Mrs. Fred L. Black.

LEGAL NOTICES

NOTICE OF SPECIAL MEETING OF SHAREHOLDERS OF CENTRAL TOOL & DIE COMPANY, INC.
February 14, 1955

TO THE SHAREHOLDERS OF CENTRAL TOOL & DIE COMPANY, INC.:
You are hereby notified that a special meeting of the shareholders of Central Tool & Die Company, Inc., a Michigan corporation, will be held at the office of the company, 100 Maple Road, Troy, Michigan, on Friday, the 18th day of March, 1955, at 10 o'clock a.m.

The purpose of the meeting is to consider and vote upon a merger of Central Tool & Die Company, Inc., with Central Moulding Stencils, Inc., a Michigan corporation. The resulting corporation is to be Central Tool & Die Company, Inc., a Michigan corporation. A summary of the principal features of the merger is as follows:

1. The authorized capital stock of Central Tool & Die Company, Inc., will be increased from eight million shares to a total par value of \$10,000,000 each, which will be the authorized capital stock of the resulting corporation.

2. The holders of the present \$100 par value stock of Central Moulding Stencils, Inc., will receive one (1) share of the \$100 par value stock of Central Tool & Die Company, Inc., for each share of Central Moulding Stencils, Inc., now outstanding or a total of 100,000 shares for the 100,000 shares of Central Moulding Stencils, Inc., which will become the property of Central Tool & Die Company, Inc., which latter corporation will be liable for all the debts of both corporations.

3. The paid-in capital stock of the resulting corporation will be 10,000,000 shares of \$100.00 par value each, having a total value of \$10,000,000.

4. Before the merger will become effective, it shall be approved by a vote of shareholders representing two-thirds of the total number of shares of outstanding capital stock of each corporation and filed and accepted by the Michigan Incorporation and Securities Commission.

The merger has been approved unconditionally by the Board of Directors of each corporation, and the directors recommend that shareholders be present in person or by proxy and vote in favor of the merger at the shareholders' meeting. The directors believe that the proposed merger will result in greater efficiency as well as economy of operation. The approval of the stockholders is necessary to effect the merger.

Approved by the Board of Directors of Central Tool & Die Company, Inc. on February 12, 1955.

JANETTE E. WILSON, Secretary
Central Tool & Die Company, Inc.
100 Maple Road, Troy, Michigan 48063

NOTICE OF SALE
Notice is hereby given that by virtue of provisions of Ordinance 241 of the Ordinances of the City of Birmingham the Police Department of said city will on the 18th day of March, 1955 at 10:00 a.m. sell at public sale all public surplusage of the Municipal Building in and about the City of Birmingham, Michigan, the motor vehicles hereinafter described the same having been determined to be abandoned vehicles.

Said vehicles are described as follows:

(1) 1949 Buick 4-Door Sedan Motor Number 1374392
1953 Michigan License 1A30253
(2) 1953 Chevrolet 4-Door Sedan Motor Number 1A460096
1953 Michigan License 2H 2439
(3) 1942 Chevrolet 4-Door Sedan Motor Number 434-1225
1953 Michigan License 1D 42-84
February 12, 1955
City of Birmingham
JAMES W. MOSELEY
Chief of Police (19-62)

New Books at the Baldwin Library

- GREENWOLD—Red Paws
KUEHLER—Treasury of Science
PARADISE—Time is Now
REFERENCE BOOKS
RELIGION—Loving Theatre
GRAY—World in Tune
SOCIAL SCIENCES
Understanding the New York Stock Exchange
NIELSEN—Swedish Peasant Customs
BARKER—Continental European
SCIENCES & THE USEFUL ARTS
HISTORICAL TRAVEL—Biography
POPULAR MISCELLANEOUS
HEARD—How to Eat Better for Less
POWERS—Sports—Amusements
FINE ARTS—Sports—Amusements
FISH—Recreation & Tradition in
GOTTSCHE—American Art
Wool, Leather, Hosiery
HARRIS—How to Make a Living as
BARNES—The Stage, Everyone
LITERATURE
LIFE—The Wisdom of America
NASH—Family Relations
HUBER—The Living Room
KEVIN—The Cook's Companion
HISTORY—TRAVEL—BIOGRAPHY
TOMMIE—Clubs of History
DE MUSELLETTIN—Wanderlust
SNOW—The Town of Pirates
HEMIS—John Quincy Adams & the
Foundation of American Foreign
Policy
HUBER—How Many the Thousand
HUNT—United Story of Douglas
OLIVANT—How and When
STEPHEN—Medieval History
C.E.
BOWLER—History of France
PARKS—United States of America
EMERSON—The American
HOBAN—Great Boats
MILTON—The American
YOUNG MODERN COLLECTION
MILTON—The Kid Who Beat the
Doctors

MACHETANZ—Where Else But Alaska?
LINGG—John Philip Sousa
NORMAN—To a Different Drum
JUVENILE NON FICTION
FRESHMAN—All About the Wonders of Chemistry
RIPLEY—Visions of the World
RIPLEY—Mystic of Paris
JUVENILE FICTION
BRYLMANN—The High World
BLANK—Pete the Parakeet
DUBOIS—The Young Christmas Eve
EWING—The Promises and Other Stories

Page 4
B'HAM ECCENTRIC
Thursday, March 3, 1955

HENDERSON—Tom, Ben and Blackie
LINSLEY—Cart Farm Boy
LUI—Little Wu and the Watermelon
EASY AND PICTURE BOOKS
FOSTER—Miss Floss McFinney and
KRAUS—Laughing Water
LITTLE—Will Be You and You Be Me
PETERHAM—Off to Bed
WATTS—Patchwork Kid
MARY MARGUERITE—Martin's Mite



CAR-TUNES
LUBRICATION

- AND GREASE THE TIRES THEY SQUEAK ON THE TURNS

Well, maybe her car geography IS a wee bit off! But she'll have no squawks 'cause she'll hear no squeaks from anywhere after a thorough lube job here!

STERNAL'S
AUTO SUPPLY & STANDARD SERVICE
408 S. Woodward We Give S&H Green Stamps MI 4-3520

REGISTRATION NOTICE

BLOOMFIELD TOWNSHIP BIENNIAL SPRING ELECTION

To the Qualified Electors of the Township of Bloomfield, County of Oakland, State of Michigan.

Notice is hereby given that any person wishing to vote at this election must register on or before March 7, 1955 at 8 P.M. Eastern Standard Time.

Citizens of the United States, 21 years old, who have resided in the State of Michigan six months and in the Township of Bloomfield thirty days prior to April 4, 1955 are eligible to register.

Notice is further given that such registrations will be taken at the Bloomfield Township Hall, 4200 Telegraph Rd. on Monday, the 7th day of March, 1955 from 9 A.M. to 8 P.M., Eastern Standard Time.

Notice is further given that such registrations will also be received on week-days from 9 A.M. to 5 P.M. daily and on Tuesday, March 1, 1955 until 8 P.M. Eastern Standard Time.

Those persons who have already registered under the permanent registration system and have voted within the last four years do not have to re-register.

ROBERT H. DUDLEY,
Township Clerk

David J. Underdown's

BROWN'S EXCLUSIVE CLEANERS

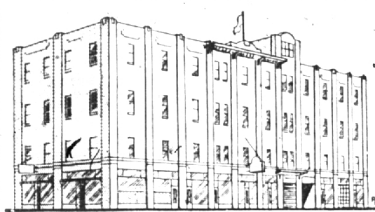
W. Maple at Chesterfield MI 4-2100

Quality Cleaning
and the service you want

CASH & CARRY
In By 10:00, Out By 5:00

OPEN 7:30 A.M. to 6:30 P.M.

Get a Brown's Exclusive shoe shine pack with every cleaning order to complete that well dressed appearance.



You Are Cordially Invited to Inspect
OUR MODERN STORAGE
Built Especially to Store Household Goods
Local and Long Distance Moving
Gaulker Storage Co.
9 Orchard Lake Ave., Pontiac, Mich.
Dial "O" ask for Enterprise 6305

USE ECCENTRIC CLASSIFIED ADS FOR BEST RESULTS!



ROOM FOR LOTS MORE

You can make room for more people . . . more living space . . . more pleasure, with the help of a low-cost Home Improvement Loan from us.

Add that bedroom . . . bathroom . . . recreation room now; pay for it, in monthly installments that fit your income, over a period of time.

FIRST: GET CONTRACTORS' ESTIMATES.
THEN: COME TALK WITH US!

PROTECT YOUR VALUED POSSESSIONS
from destruction, loss or theft by placing them in a SAFE DEPOSIT BOX
Now Available at our SOUTH WOODWARD BRANCH

THE BIRMINGHAM NATIONAL BANK
BIRMINGHAM, MICHIGAN
Member Federal Reserve System
Member Federal Deposit Insurance Corporation
188 N. Woodward at Hamilton 1954 S. Woodward near 14 Mile Rd.



You Can't Beat This!
GLIDDEN'S SPRED SATIN
The Wonder Paint

The original latex emulsion paint, the most talked about and most imitated. Yet . . . no other paint can give you the "professional" look on your walls as Spred Satin. There never has been a wall finish that could match Spred Satin in taking punishment. It is a paint film that puts an end to lap streaks and brush marks. It dries in a couple of hours and leaves the most beautiful finish you could possibly get. Before you buy any latex paint see us about Spred Satin, if you demand the finest paint of all.

180 Dramatic Pastels
And Deep Colors

BIRMINGHAM PAINT
Glass & Wallpaper Co.
335 E. Maple MI 4-3737

Store Hours Monday thru Friday, 8:30 to 5:30; Saturday 8:30 to 5:00