

Elect . . . Friedrich FIESSELMANN, Jr.



Birmingham City Commission
2 year term to fill vacancy

- Keep Chain Park where it is to add to the Civic Center.
- Pay-as-you-go city swimming pool for summer youth activities
- Divert through truck traffic from the heavy industry east of Birmingham to proposed toll road
- Integrated greater metropolitan police, fire, water, and sewage

Vote for a program with a future

TOWN AND COUNTRY

BIRMINGHAM'S ONLY COMPLETE

MEAT MARKET

303 E. MAPLE MI 4-6224

Free Parking At Rear Of Store
PERSONAL SERVICE

ECONOMY MEAT CUTS

STEAK SALE

ROUND SWISS T-BONE SIRLOIN **59c lb.** Young & Tender

boneless, Rolled SIRLOIN TIP
RUMP **69c lb.**

POULTRY DEPT. FRESH CHICKEN
LEGS **69c lb.**
BREASTS **79c lb.**

Sliced, 1/2 lb. Pkg. Dried Beef **29c**

SEAFOOD DEPT. Cooked LOBSTER **99c Ea.**
Swordfish STEAKS **69c lb.**

Delicatessen Dept. DELICIOUS: POTATO SALAD **49c lb.**
HEALTH SALAD **39c lb.**
SHRIMP SALAD **69c lb.**

FREEZER SPECIALS

Choice Beef Loins **49c lb.**

Old South ORANGE JUICE **\$1.50**

Seabrook Farms, Frenched GREEN BEANS **\$1.99**

ICE CREAM **1/2 Gal. 79c**

TO TELEPHONE CUSTOMERS IN THE SOUTHFIELD ZONE

Work is now under way to provide the Southfield Zone with an improved dial telephone service in the summer of 1955. This service will be provided on a one and two party basis only.

At the time the new dial equipment is placed in service we propose to withdraw the "Local Zone" service offering and to introduce a new "Message Rate Extended Area" service. This will provide the Southfield customers with a choice of either message rate or flat rate "Extended Area" service.

The classes of service that would be available and the rates that would apply under the proposed arrangement are shown below in comparison with present service offerings and rates. Column 1 lists the rates for present service offerings while Column 2 lists the rates for proposed service offerings.

The Company's 1955 request for general rate increases throughout the State is still pending before the Michigan Public Service Commission. If the rate schedules requested were in effect, the comparison under the current proposal would be as shown in Columns 3 and 4 below. The rates which may ultimately be ordered by the Commission in that proceeding will be no higher than those shown in Column 1, and may be lower.

The Michigan Bell Telephone Company will file an application on March 29, 1955, with the Michigan Public Service Commission in Lansing asking approval of the plan outlined above.

CLASSES OF SERVICE	UNDER EXISTING RATE SCHEDULES		UNDER RATE SCHEDULES REQUESTED JUNE 9, 1955	
	(Column 1) Present Southfield Rate Plan Monthly Rates	(Column 2) Proposed Southfield Rate Plan Monthly Rates	(Column 3) Present Southfield Rate Plan Monthly Rates	(Column 4) Proposed Southfield Rate Plan Monthly Rates
RESIDENCE SERVICES:				
Flat Rate				
Local Zone Service				
1-Party Line	\$ 3.25	(Not offered)	\$ 4.15	(Not offered)
2-Party Line	3.00	(Not offered)	3.60	(Not offered)
Extended Area Service				
1-Party Line	5.25	\$ 5.00	4.15	\$ 5.90
2-Party Line	4.25	4.00	3.15	4.90
Message Rate				
Extended Area Service	(Not offered)	3.00	(Not offered)	3.75
2-Party Line (Includes 55 Message Units, Additional Units 55 Ea.)				
RESIDENCE EXTENDED AREA SERVICE provides calling at flat rate or one message unit to Southfield, Birmingham, Farmington, Mayfair and Royal Oak telephones and to Detroit telephones with Broadway, Diamond, Superior, Texas, University, Vermont, Webster and Kentwood numbers.				
BUSINESS SERVICES:				
Flat Rate				
Local Zone Service				
Private Branch Exchange Trunk	\$ 9.25	(Not offered)	\$12.25	(Not offered)
1-Party Line	6.25	(Not offered)	8.25	(Not offered)
Extended Area Service				
Private Branch Exchange Trunk	13.75	\$13.00	20.25	\$19.50
1-Party Line	9.25	8.75	12.50	13.00
Message Rate				
Extended Area Service	(Not offered)	6.25	(Not offered)	7.50
1-Party Line or Private Branch Exchange Trunk 1st Line or Trunk		Includes 75 Message Units, Additional Units 45 Ea.		Includes 90 Message Units, Additional Units 55 Ea.
Additional Line or Trunk	(Not offered)	3.25	(Not offered)	3.50
Same Public Call Telephone Daily Guarantee	24	28	40	40
BUSINESS EXTENDED AREA SERVICE provides calling at flat rate or one message unit to Southfield, Birmingham, Farmington, Mayfair and Royal Oak telephones, and at one message unit to Detroit telephones with Broadway, Diamond, Superior, Texas, University, Vermont, Webster and Kentwood numbers.				

MICHIGAN BELL TELEPHONE COMPANY



LT. LEE H. SHAY

Bloomfield Flyer At Atomic Test Site In Nevada

B.L.M. TOWNSHIP—Now at the Atomic Energy Commission Proving Grounds, Camp Desert Rock, Nev. for the latest series of atomic tests is Marine 2nd Lt. Lee H. Shay, son of Mr. and Mrs. R. H. Shay of 2325 W. Maple road, Birmingham, and husband of the former Miss Barbara B. Boeghold of Pontiac.

Before entering the service in August, 1953, he attended Michigan State College, East Lansing, Mich.

While there he will participate in an air-ground exercise during which an atomic explosion will be employed against hypothetical enemy forces.

He is a member of the 3rd Marine Provisional Atomic Exercise Brigade which was flown to the desert site to participate in atomic attack problems.

Summer Camp Roster Being Filled Early

With the expression, "Sorry, no more registrations are being taken for Camp Nissokone or Haywood-Hay, greeting many parents who are endeavoring to get their boys into camp, the Birmingham Y staff is still trying to place many boys and girls in a summer camp suitable for their needs.

The local Y states that places remain in most periods at Camps Ohlyesa and Mah-Go-Tah-See but are rapidly being taken up each day. Registrations can be made at the Y for the first, second, fourth, and fifth periods at Camp Ohlyesa which is located near Holly, Michigan. This camp has undergone extensive remodeling during the past year.

A new hospital building has been dedicated, the kitchen has been completely remodeled and renovated and 16 of the cabins have new concrete floors, paired and new banks built in. The stock has been repaired and is now awaiting some favorable spring weather to receive a coat of paint.

Registrations for Camp Mah-Go-Tah-See are being taken by Sidney Seal at Pontiac, and locally by the Birmingham Y.

Fees, camp dates, and information may be had by telephoning the Birmingham Y. All camp personnel have been hired and no openings remain for staff people at these camps.

Community House To Hold Annual Show March 31

Birmingham's Community House is once again preparing for its annual crafts and hobby class exhibition, scheduled this year for March 31 from 2 to 6 p.m.

Miss Myra Showman, staff director, said Mrs. George Weinholt is general chairman, assisted by Mrs. A. J. Daley, Mrs. Preston Keir is in charge of refreshments and the hostess committee.

Tea will be served from 2-5 p.m., under the chairmanship of Mrs. Charles Othemeyer, with punch for the evening refreshments.

Classes invited to participate in the exhibit are bridge, Mrs. Connie Anderson and Mrs. Forrest Hainline; creative pottery, Mrs. Edith Foster; design, Peter Duennas.

DRAWING, painting, Keith Whitmore; enameling and silver, Mrs. Thelma Anderson; free lance writing, Miss Alice E. Morgan; gardening, Mrs. Alice Westall Burlingame; leathercraft, Fred Taylor.

Millinery, Mrs. Pat Cuccchi; painting, Mrs. Kathleen Birch; sculpture, Miss Svea Kline; sewing, Mrs. Bea Roach.

Miss Showman stressed that this is planned solely to show the work done in the various classes and that the entire program is open to the public.

Detroit Given 3 Years Probation

Robert Kimberly, 49, of Detroit, who pleaded guilty last week to malicious destruction of property, in Southfield township last Nov. 13, was placed on three years probation and assessed \$150 costs.

He was sentenced by Oakland County Circuit Judge H. Russell Holland Monday in Pontiac.

Kimberly admitted smashing cupboards and a stove and other furnishings in a home at 2754 North western highway, from which he had been previously evicted.

Three Youths Hurt When 2 Cars Collide

B.L.M. TOWNSHIP—Two Troy township youths and a Pontiac boy were injured Saturday when their autos collided on Squirrel road south of Highway 24.

John Truesdell, 16, of 1122 Boyd, Troy township, driver of one of the cars, was treated for face cuts at St. Joseph Mercy Hospital.

A passenger with Truesdell, Larry Hill, 14, of 128 Boyd, suffered elbow and mouth injuries.

In the other car, driven by Lee W. Hayes, 70, of Pontiac, Coley Tracey Jr., 18, also of Pontiac sustained head and arm injuries.

Hayes told Bloomfield Township Police that he was on the side of Squirrel road, heading north, when Truesdell's car came over a hill suddenly and the two autos crashed together.

Accept Sewer Bid

SOUTHFIELD — Low bid of \$19,035.95 by Park Excavating Company on the Southampton sewer, was accepted Tuesday night by township trustees who set a public hearing on the project for April 12.

NEED SOMETHING FOR YOUR HOUSE? Then locate it by reading or using the Classified Ads in The Eccentric each week.

Accept Petitions For Street Paving

SOUTHFIELD — Township trustees accepted petitions on four paving projects in Section One and authorized an engineer to make wood to Madison; Beverly, from cost estimates in order that a public hearing to Sheridan; and Locherbe

and Beechwood, from Southfield to Pierce.

Are you thinking of buying a new home? Then read the "For Sale Houses" columns on the Classified Ad page of this week's Eccentric.

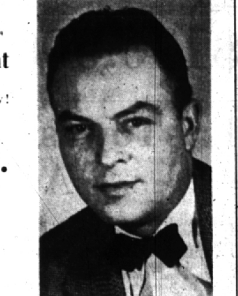
A Growing Community Demands Competent Management

Your City Commission must be an alert, vital body!

Harry M. Denyes, Jr.

Candidate for Three-Year Term

- Maintains professional offices here
- 20 years a resident of Birmingham
- 5 years City Planning Board
- Two pre-school children
- Active in various civic groups



VOTE APRIL 4 FOR CAPABLE REPRESENTATION
CITIZENS' COMMITTEE FOR GOOD GOVERNMENT

E.O.M.* Sale

END-OF-THE-MONTH

YES! YOU'LL REALLY SAVE \$\$\$ AT TRIANGLE DURING MONTH-END SALE DAYS. PRICES HAVE BEEN CUT IN EVERY DEPARTMENT. SHOP EARLY FOR BEST SELECTION!

\$31.00 3 piece bedroom group by Cushman, includes double dresser, mirror and full size bed. Floor sample \$259.00	\$101.00 6 piece breakfast group, consists of 44" round table, four chairs and lazy susan \$79.00	\$98.00 platform rocker, foam rubber cushioning, mahogany frame, tapestry cover. 2 to choose from \$84.00
\$252.20 triple dresser by Heywood-Wakefield, with framed plate glass mirror, popular Winthrop finish, floor sample \$199.00	\$107.00 drop leaf extension table by Cushman, extends to 68". Floor sample \$79.00	\$88.25 channel back pull up chair by Heywood-Wakefield. Maroon tapestry cover \$69.00
\$64.00 maple chest, six roomy drawers, ideal for youngsters or the spare room \$54.00	\$114.00 set of 4 ladder back side chairs, slip seats in Provincial print cover, close out \$69.00	\$79.00 maple platform rocker, reversible seat and back cushions. Ruffled skirt, green tweed cover— \$59.00
\$39.95 maple bunk bed, regular twin size, complete with guard rail and ladder \$29.95	\$298.00 Lawson sofa with kick pleat, neutral gray-green cover, full 81" long \$249.00	\$69.00 chair with matching ottoman. Modern styling. Choice of colors \$59.00
\$39.50 full size poster bed in red maple. Floor sample, slightly marred \$24.00	\$161.25 Cape Cod love seat, antique maple, Military print cover, floor sample \$98.00	\$65.00 Provincial pull up chair, fruitwood finish. Attractive print cover, floor sample \$49.00
\$185.00 54" maple hutch by Cushman. Top has glass doors, base provides storage for dishes, linens and silver \$149.00	\$198.00 2-piece sectional by Kroehler, gray nubby tweed cover. Modern styling, cushionized construction \$179.00	\$39.50 plastic covered occasional chairs. Modern styling, blond legs \$34.50
\$175.00 buffet in solid cherry by Pennsylvania House. 54" size, floor sample \$98.00	\$119.00 Victorian ladies occ. chair, carved solid mahogany frame, floral tapestry cover. Floor sample— \$89.00	\$11.95 wrought iron circle or butterfly chairs, most colors in stock \$8.88
Shop Early for many other E.O.M. Values not listed!	Bridge Table and Floor Lamps—One of a kind 30% off!	Convenient Charge Account or as little as 10% down payment

OPEN EVERY MONDAY AND FRIDAY EVES. TILL 9!

Triangle

FURNITURE CO.

4 Great Stores

128 SOUTH WOODWARD
Birmingham
• Royal Oak • Ferndale
• Mt. Clemens