

# Bulb Lore to Help Grow Showy Gardens

By ALICE WESSELS BURLINGAME  
Special Writer for The Birmingham Eccentric

This time of year there will be many inquiries about bulbs which have grown nicely on a series of sunny days, only to get caught in cold weather. Gardeners are worried about the possibility of a ruined bulb crop.

My advice would be to relax. This fluctuation on early bulb growth has been going on for a good many years and nature will end up with a good show for you yet.

If you do have bulbs which have heaved out of the ground due to frost action you will find it easy to press the bulbs back into the ground and maybe a shallow covering of good humus would be beneficial. Don't take the bulb out of the soil.

We should really use more bulbs to give interest to our perennial beds.

Next fall will be the time to write about the early spring bulbs but now is the time to point out some bulbs you can enjoy for this next season's pleasure.

TODAY WE WILL only refer briefly to those you might order at an early date. Later, at planting time the culture of those mentioned will be explained.

Gladioli are fine if you have a large garden and in your selec-

tion of colors remember the whites and purples are important to give accent to the other colors in an arrangement.

Tuberous rooted begonias can be started now for accent in your shady areas. Select firm tubers and start in shallow boxes of moist peat. Water sparingly until the leaves begin to show, and then keep the peat moist at all times. Do not plan to place outdoors until all danger of frost is over.

There are many choice types to select, the camellia, rose form, fringed, ruffled, etc. This particular flower seems to have become a hobby crop for many of our local businessmen.

If, at your home you have a possible recruit for gardening you would find that this flower suggestion would give a fine start for a person who appreciates a challenge with a fine reward.

They will prosper best if incorporated in a bed of ground cover. Place the corms about ten inches apart.

They may be started early in pots and be sure and sterilize the soil (heat the soil in the oven as long as you would a potato). Colchicum are exotic and were mentioned before as being ideal for a full sun or part shade location where they will flower from late August until October.

They will prosper best if incorporated in a bed of ground cover. Place the corms about ten inches apart.

## Susan Paterson Joins Honorary

Susan Paterson, freshman at Mary Baldwin College, at Staunton, Va., was initiated into provisional membership of Beta Beta Beta at an installation ceremony on March 3 as two sophomores at the college became active members of the fraternity.

Tri-Beta is a national honorary biological society open to biology majors or prospective majors who are in at least their fourth semester of college work. Provisional members must have completed work beyond the freshman level in biology, while active members must have done more advanced work.

Miss Paterson, a daughter of Hamilton H. Paterson, 885 Westwood Drive, is also a member of the glee club at the college.

Society deadline is 3 p.m. each Tuesday.

**WATCHES REPAIRED**



Don't despair! Our experts will soon have that watch keeping accurate time again... at a very modest cost! We also repair all types of clocks.

**GEORGE ROSS**

★  
**JEWELERS**  
★

244 E. MAPLE

Free Parking In Rear Of Store  
Open Friday Evenings

MI 4-8215

Official watch inspectors for the New York Central and Pere Marquette Railroads and registered Chronograph watch technicians.

*For The Latest In Permanent Waving call*

The centrally located

**MODERN Beauty Salon**

MI. 4-2666 271 W. Maple — Opposite Waabek Bank

USE ECCENTRIC CLASSIFIED ADS FOR BEST RESULTS

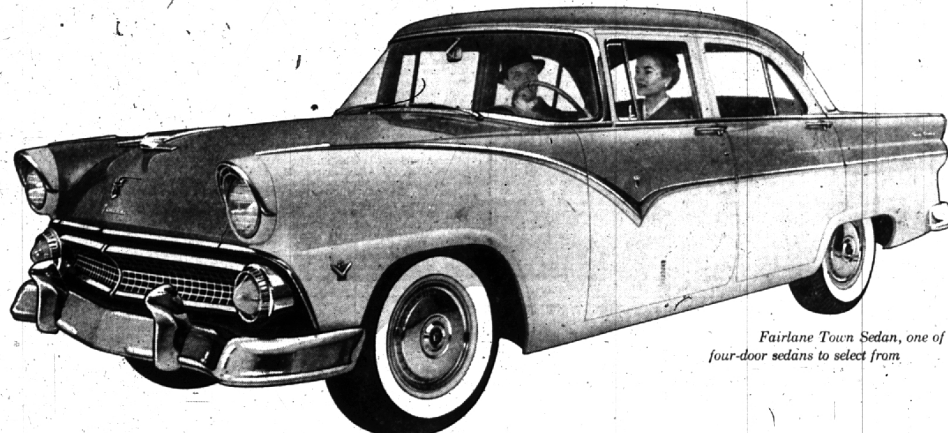
**SPORTING CANADA**

GO IN LUXURY AT LOW COST

Shed out and burn out in uncrowded Canada. Feel how sporty a game fish can be. And start unwinding in easy comfort on CNR's all new trains. Never better food! If economy you can choose Dinette service. For reservations:

M. J. WICHMAN  
Grand Trunk Passenger Station  
Birmingham, Michigan  
Midwest 4-7616

Ask about 10-Top Vacations



Fairlane Town Sedan, one of 3 four-door sedans to select from.

# Automatically your best buy!

*Ford's five power assists combine to give you more added convenience and extra driving ease than you can get in any other car in Ford's field!*

It's great fun to step into a Ford's rich, colorful Luxury Lounge interior... to touch your toe to the gas pedal and feel the masterful might of Trigger-Torque power responding instantly to your every wish. It's fun, too, to bask in the admiration aroused everywhere by Ford's Thunderbird-inspired styling.

But, for the ultimate in driving fun and ease, you should try a Ford with Ford's optional power assists: new Speed-Trigger Fordomatic, power steering, brakes, windows and seat. Ford brings you the power assists that combine to do the most for you automatically... so you get the most out of your daily driving!



### Automatic Driving at its Best

Now Speed-Trigger Fordomatic Drive has a new, automatic low gear which lets you start in low, shift to intermediate and then into high—all automatically—all while the drive selector lever is in drive (D<sub>1</sub>) position. And Speed-Trigger Fordomatic Drive is the only "automatic" in its field that combines the smoothness of a fluid torque converter with the versatility of three automatic forward gears.

#### Power to Steer For You

Ford Master-Guide Power Steering does up to 75% of the steering work for you on turns... yet you retain the natural feel of the wheel on straightaways. It's a great help when parking—makes all driving and handling easier and more relaxing.

#### Power to Apply Your Brakes

Ford's Swift Sure Power Brakes do up to one-third of the stopping work for you. And there's built-in safety. With power off, you can still stop your car as easily as though your Ford were equipped with the standard braking system.

#### Power to Adjust Your Seat

Ford's 4-Way Power Seat is the only power seat in Ford's field that adjusts "up and down" as well as "forward and back" for the most comfortable driving positions. A touch of the conveniently located single seat control does it!

#### Power to Lift Your Windows

With Ford Power-Lift Windows you don't need to stop in order to open or close all side windows. Driver can operate all four windows from the master control on the door. And each passenger has a separate control switch for his own window.

And there's Trigger-Torque power to give you more "Go"

## Test drive a '55 FORD

**HAROLD TURNER, Inc.**

Turn to Turner — Your Friendly Ford Dealer

444 SO. WOODWARD AVENUE

"FORD the New BEST SELLER . . . Sells More Because It's Worth More!"

PHONES MIDWEST 4-7500 or JORDAN 4-6266

WITH THIS PLAN . . .  
The Nearest Mail Box is a Teller's Window!

Banking by mail is fast, safe, and convenient . . . and more people are making use of it every day. Why don't you? Waabek State Bank's plan makes banking by mail from your home or office as easy as writing a postcard. And the service is as friendly and personalized as it is right in the bank.

Come in and let us show you the ease and convenience of using this time- and trip-saving plan.

**WABEEK**

STATE BANK OF DETROIT

Member of  
Federal Deposit Insurance Corp.

WABEEK BUILDING  
BIRMINGHAM, MICHIGAN

# DETROIT TRUST CO.

AVOID TAX TROUBLE

Do you know how the 1954 income tax law affects you? Find out. Call or write for our free booklets "Explanatory Summary of the 1954 Tax Code" and "Federal Estate — Gift — Income Taxes".

Fort at Shelby  
WO 2-5670