

### New Recordings at the Baldwin Library

BETHOVEN—Quartet, string, No. 1  
 F. No. 2  
 Symphony No. 3, E flat major  
 Quartet, string No. 3  
 BRAHMS—Quartet, string No. 1, C minor, violin and piano No. 3  
 CHOPIN—Four Stanzas  
 DEKAY—Society's Apprentice  
 FAUBUS—Requiem  
 HAYDN—Suite No. 4, E major  
 HAYDN—Symphony 1st  
 JOHANNESBACH—Viv. Parisienne  
 RESPIGHI—Piano and the Fountain of Home  
 RACHMANINOFF—Suite No. 1, two concertos  
 ROBERTS—Student Prince (excerpt)  
 SCHUBERT—Quartet, F. major  
 SCHUMANN—Quartet, string No. 3

### Drafting Graduate

Pvt. John Leonard Meyer, son of Mr. and Mrs. C. Frederick Meyer, 569 Oakland Street, graduated last month from the 11-week Construction Drafting Course at The Engineer School, Fort Belvoir, Va. The course which has completed offers training in drawing plans for various construction projects.

### Investment Experts To Address Council

How to "get money, guard it, and make it grow" will be the theme of the March 26 clinic, Oakland county council, National Association of Investment Clubs. The session is scheduled for Pontiac high school, starting with a 9 a.m. registration, and continuing through the day with several investment experts as speakers.

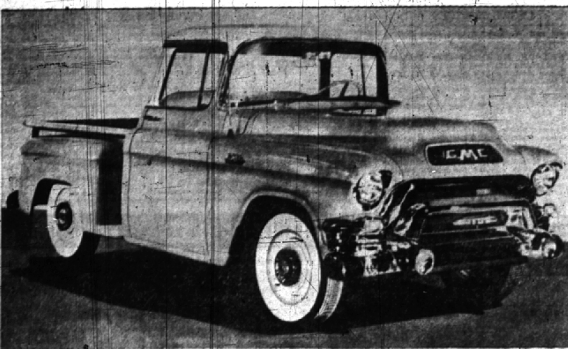
### We Heard It Said By:

THE REV. W. H. BOGGS, D.D., moderator at the general assembly, Presbyterian Church in the U.S., and guest speaker at Birmingham's First Presbyterian: "I am delighted with your church here. It is an 'easy' church to speak in and one which lends a great deal to every service through its simplicity, beauty and many facilities. I see a great many churches in my work, and feel this one is among the best."

### Gilmore Hearing Is Postponed

Monday's hearing in Detroit's federal court for John W. Gilmore Jr., 24, accused of misrepresenting himself through the mails, was postponed without another scheduled appearance by Judge Woodrow Levin.

Gilmore, who gave his address at 917 Pierce, Birmingham, is accused by the FBI of grossly misrepresenting himself through the mails to an Oklahoma oil company in an attempt to gain employment. The son of a prominent Detroit attorney, Gilmore was sentenced to from two to 14 years in prison in 1949 after conviction of passing about \$1,400 worth of bad checks. The accused now is free on \$5000 bond.



LOW SILHOUETTE FEATURED IN GMC'S 1955 TRUCK LINE  
New styling concept is blended with functional ruggedness

## 74 New Models in GMC's 1955 Line

A complete line of 128 new 1955 GMC truck models, featuring units powered by V-8 engines, a new concept in streamlined design and some 500 major styling and engineering improvements, was announced today by GMC Truck and Coach division.

More than doubling the number of models offered in 1954, the new line brings seventy-four entirely new models into the GMC family of light, medium and heavy-duty vehicles to blanket trucking industry needs from half-ton pickups to 5-ton tractors.

Other highlights include a new series of lighter-weight Diesel trucks, expanded use of Hydra-Matic transmissions, and a unique dual-purpose series combining the advantages of cab-over-engine and conventional models. The 1955 GMC's represent the greatest advancements in truck engineering and styling ever achieved in a model changeover by a major truck manufacturer.

Philip J. Monaghan, vice president of General Motors and general manager of the division, said GMC Truck has invested several million dollars to bring out a new product that obsolesces, from an economical standpoint, practically every truck in use today.

The new "Speedline Styling" of all GMC conventional and dual-purpose trucks is considered a new concept in truck design, combining the graceful lines of passenger-car outline with functional ruggedness. Other styling advances include hidden running boards, a streamlined grille, header bar and bumper assembly, a two-cluster instrument panel positioned directly in front of the driver, fadjet peaks over headlights and windshields, rich color schemes, and a dramatic new ventilating system.



PHILIP J. MONAGHAN

Household goods of every description are offered for sale in the Classified Columns of The Birmingham Eccentric.

Notice is also hereby given that the Commission of the City of Birmingham will meet in the Municipal Building in said City on Monday, the 21st day of March, 1955, at which time and place opportunity will be given to all persons interested in the following described property:

- 1. HENK H. HANLEY, 1018 & 17th, 1952-53 (52-1)
- Hopert, Hartman & Burr, Attys, 1001 Pontiac State Bank Bldg., Pontiac, Mo. 64445
- STATE OF MICHIGAN—The Probate Court for the County of Oakland, in the Matter of the Estate of NELLIE SMITH WIMSETT, Deceased. In a section of said court, held at the Probate Court in the City of Pontiac, Michigan, on the 22nd day of March, A. D. 1955.
- Present, Honorable Arthur E. Moore, Judge of Probate.
- Notice is hereby given and it is hereby ordered that the time and place for hearing on claims against the above estate shall be the 6th day of June 1955, at nine o'clock in the forenoon at the Probate Court in the City of Pontiac, Michigan.
- All creditors of claims against the above estate are further notified and ordered to prove their claims at and before and enter in said hearing, to wit: within claim therefor, with this Court and with the clerk of this court, under oath, containing sufficient detail to enable the Judge of Probate of the nature and amount of the claim.
- ARTHUR E. MOORE, Judge of Probate.

NEED SOMETHING FOR YOUR HOUSE? Then locate it by reading or using the Classified Ads in The Eccentric each week.

**LEGAL NOTICES**  
 CITY OF BIRMINGHAM, MICHIGAN  
 NOTICE TO PROPERTY OWNERS  
 EDGEMOND, PALMVIEW, LINCOLN AND WINDYBROOK  
 The City Commission of the City of Birmingham will meet Monday, March 21, 1955, at 8:00 P. M. in the Commission Room in the Municipal Building to consider any objections to the construction of certain improvements described herein, and for which petition has been filed and to the creation of a special assessment district within the following described property:

- 1. Edgemoor, Lots 10 and 11
- 2. Edgemoor-Woodward Subdivision, Lots 1 to 29 inclusive
- 3. Edgemoor, Lots 14 to 23 inclusive
- 4. Oakdale Villa Annex, Lots 16 to 18 inclusive
- 5. Edgemoor, Lots 12 to 15 inclusive
- 6. Edgemoor, Lots 19 to 23 inclusive
- 7. Edgemoor, Lots 1 and 2

Plans and estimate of cost of this project are filed with the City Clerk of Birmingham for examination by the public. Individual assessments are not now available. They will be computed by the assessor after March 21, 1955. If the necessary for this project is established by the Commission, and there will be another public hearing scheduled for the purpose of reviewing the assessments.

IRVING F. HANLEY, City Clerk  
 March 10, 17, 1955 (52-1)

**PINE STREET BRASSAGE RESTAURANT**  
 Notice is hereby given that Special Assessment Roll No. 146, heretofore made by the assessor for the purpose of defraying the cost of one lot, one catch basin, one manhole and approximately 24 linear feet of 18 inch catch basin sewer to be placed on Pine Street approximately 218 feet west of the west property line of Chesterfield, is now on file in my office for public

## KINCAID'S

213 E. Maple JEWELERS MI 4-7830

ACT LIKE NEW

makes old timers

Let our new watch maker, F. A. Shurt, check up on your watch, young or old. A few minutes of your time now may save dollars for you in the future. He provides highest quality workmanship and prompt service, using only genuine factory parts. Drop in today. All watches electronically timed.

## You can't talk around the facts

# Here's why Pontiac Sales are at an All-Time High!

- 1. Biggest Car Priced So Near the Lowest!**  
Nothing beats wheelbase for a road-hugging ride. Pontiac's 122" or 124" wheelbase is 6 1/2 to 8 1/2 inches longer than any of the "low-price three."
- 2. Most Distinctive Styling At Any Price!**  
No matter what you pay, you can't match the years-ahead beauty of Pontiac's Twin-Streak distinction and Vogue Two-Tone colors.
- 3. Most Power Per Dollar in its Field!**  
Dollar for dollar, Pontiac's sensational Strato-Streak V-8 delivers more power than any other car near its price. And it delivers this power with the greatest economy in Pontiac history!
- 4. You can buy a big, powerful Pontiac for less than many models of the lowest-priced cars or stripped economy models of higher-priced makes!**  
Come in, drive and price Pontiac. You'll quickly see why buyers from both ends of the price scale are helping Pontiac set new sales records!

Look High and Low ... and You'll Go Pontiac!

## YOU CAN DO IT EASY AND FAST with just 1 coat of

# INTEX

INTERIOR - EXTERIOR NATURAL WOOD FINISHES

Now you can actually stain, seal and finish plywood or any bare wood surface in just one simple operation. Intex is easy to apply, dries in a matter of minutes, and produces a lovely, satin finish that will stand both washing and weathering. Come in and see the beautiful, natural finish effects obtainable with Intex.

## We Give Berkley Profit SHARING STAMPS

W. 32 Mile Rd. PHONE LI 1-6070  
 BERKLEY  
 Just East of Post Office

Open Daily 9 to 6  
 Fri. 9 to 9

Window Shades Venetian Blinds	Picture Frames Artist Supplies	Michigan's Finest Wallpaper Selections	Custom Mixed Interior & Exterior Paints
-------------------------------	--------------------------------	--	---

## WILSON PONTIAC-CADILLAC, Inc.

1350 North Woodward Ave. Phone Midwest 4-1930 and Jordan 4-6655

DON'T MISS THE RED BUTTONS SHOW—FRIDAY, 8:00 P. M.—CHANNEL 4

# D E T R O I T T R U S T C O .

AVOID TAX TROUBLE

Do you know how the 1954 income tax law affects you? Find out. Call or write for our free booklet, "Explanatory Summary of the 1954 Tax Code" and "Federal Estate Tax" — Gift — Income Taxes!

Fort at Shelby  
 WO 2-5670