

### Rezoning Gets Tentative OK

Although they gave tentative approval, Birmingham city commissioners Monday night officially withheld rezoning of several acres until certain restrictive agreements are prepared and recorded. The rezoning concerns three landlocked parcels north of Oak street, west of Woodward and along the Rouge river.

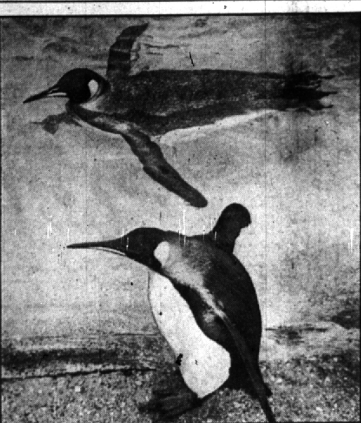
Property owners abutting the area under consideration on general principles objected to the rezoning to terraces, but especially if about 100 feet of flood plain east of the stream were not permanently restricted for that purpose.

RESIDENTS and city plan board are expected to meet and go over reasons for the rezoning, which the plan board recommends. One hundred eighteen terrace units are proposed for the rezoned area and the present terrace property along Woodward.

Commissioners expect the agreements to be ready for presentation on March 21.

#### Back from Southern Visit with Friend

Mrs. James Harrison, and son, Jamie, 6, returned to their Kenesaw street home Sunday, having spent two weeks in Florida. At Eau Gille, Fla., they were guests of Mrs. John Garvey, former resident on Puritan here.



HERE'S HOW—Swimming instructor at the London Zoo's penguin pool gives a lesson in the fine art of pinfeather propulsion to a dry-land neophyte. Penguin on shore is spoiled by relatively mild climate of England, and doesn't want to get his tuxedo wet.



A WIDELY KNOWN business leader and traveler, B. H. Brandt, 310 Southfield, will be the March 14 speaker for the Birmingham Rotary club. His subject will be on selected aspects of salesmanship — why people buy. A native of Iowa and veteran of World War I, Brandt has traveled through the Americas and Europe. Since 1937 he has been associated with Michigan Bell Telephone company and currently is in charge of all independent telephone company relations for Michigan Bell.

#### Lt. Henry Timm Heard Over WCAR

The first of a series of six informative radio broadcasts by leading law enforcement officials in Oakland County began last Sunday when Lt. Henry Timm, Birmingham Youth Bureau chief, spoke over Radio Station WCAR in Pontiac.

#### ★ Smile a Minute . . .

Little Frederick was saying his prayers one night. His mother tipped up and heard this gem: "And please make Tommy stop throwing things at me. By the way, I've mentioned this before."

### Petitions

(Continued from Page 1, Sec. 1)

and officials estimate that they will need 13,750 to gain approval from the state—hence the special census request.

VICKERS, INC., a Detroit concern, meanwhile announced it had let contracts for its new building, which it hopes to occupy by early 1956.

Ernest W. Gray of 6300 Livernois, Troy township, was appointed chairman of the temporary committee to work out incorporation. Citizens and lawyers checked petitions for proper signatures and double-checked legal facts late Saturday and all day Sunday.

approve incorporation petitions street for 300 feet north of Webster, and a new Webster water main.

Only 29 square miles of the township's 33-square-mile area is being considered for incorporation now to make sure that they fall under the 500 persons-per-square-mile ruling.

What remains would be annexed after the township's incorporation. The proposed new city would exclude from incorporation sections 8 and 17, bounded by Watties to Square Lake from Crooks to Woodlodge, and including the White Chapel cemetery and parts of sections 1, 2, 12, and 13 bounded by Watties to South Boulevard. Deputies to John R. and extending to Livernois for one-half mile north of Square Lake road, plus some isolated areas in Royal Oak and Birmingham.

#### Webster Paving Is a Necessity

Paving of Webster from Hunter to Adams is necessary, Birmingham city commissioners determined Monday night. They also approved pavement on Worth



Phone—  
MI 4-1100



### If Your Club Meets . . .

Phone MI 4-1100 immediately. We will be glad to publish any club news you have for publication.

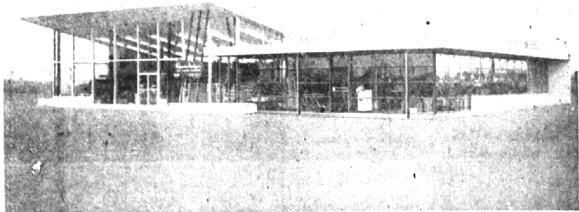
### If You Have Visitors . . .

Phone MI 4-1100 without delay and let us know who your guests are, where they are from, etc.

### If You Want to Buy or Sell . . .

Phone MI 4-1100 and use the want ad columns. Want ads in The Birmingham Eccentric get results.

# 3 MORE DAYS GRAND OPENING



WOLVERINE HDWE. CO. STORE NO. 3  
SOUTHFIELD at 12 MILE ROAD

SEE  
**SELF SERVICE . . . plus**  
individual assistance to meet your every hardware need. If you don't find what you want — let us show you where it is.

YOU ARE INVITED!—to see Michigan's newest, most unique, modern self-serve Hardware Store. Remember, through Sunday it's our GRAND OPENING. Door prizes every day!—Gifts for everybody! —and Orchids for the ladies. It's a real Opening Celebration and we want you to come in and look around! Say hello!—and get acquainted!

From now on make Wolverine hardware store your shopping headquarters—everything is stocked here to meet your needs whether it is nails,—garden tools,—builders' tools,—paint for the house or a touch-up job—fishing tackle,—fireplace equipment—or appliances. The Wolverine store has everything you want—it can save you money—and it's very convenient. There is loads of parking space for your car.

STORE HOURS—Monday, Tues., Wed.—7:30 to 8:00  
Thursday thru Sat.—7:30 to 10:00  
Sunday—9:00 to 3:00

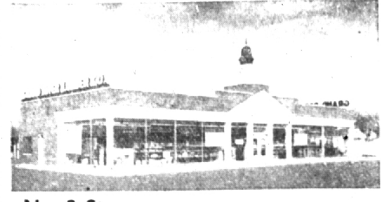
### Congratulations from:

- |                          |                                |  |
|--------------------------|--------------------------------|--|
| Acro Bolt & Screw Co.    | Eureka Broom Co.               | Michigan Bolt & Nut                            |
| Adams Rite Co.           | Glidden Paint                  | Milwaukee Lawson Co.                           |
| Allen Steel Products Co. | Grant Pulley Hardware          | National Manufacturing Co.                     |
| Alliance Metal Products  | Hall-Wessell                   | Peerless Cement Co.                            |
| Ajax Hardware            | Hardware Mutuals, Inc.         | Pittsburgh Steel Co.                           |
| B & B Distributors       | Alvin Hock Electrical Supplies | Port Cable Machine Co.                         |
| Bennett Ireland Inc.     | Howard McCarty                 | Quality Hardware Co.                           |
| Bostwick Braun Co.       | Huntington Industries          | Sharp Bros. Inc.                               |
| Boydell Multint Parts    | Industrial Metal Equipment Co. | Suburban Built-In Ovens                        |
| Buhl Sons Hardware       | LaSalle Manufacturing Co.      | Washington Steel Products (Kitchen Handy Line) |
| Cadillac Steel Co.       | L.C.N. Closey's Inc.           | Welt & Son Paper Co.                           |
| Chope-Stevens Paper Co.  | Manufacturers Steel Supply Co. |  |
| Capro Steel Co.          |                                |  |
| Engineered Products      |                                |  |

### 2 Other Great Wolverine Stores



No. 1 Store 13520 Grand River Avenue, Detroit  
Over 10,000 square feet of floor space stocked with hardware, builders' supplies and home supplies.



No. 2 Store Grand River Lumber Company Division  
Wolverine Hardware Company  
Telegraph Road at Northwestern Highway—  
10,000 square feet of floor space

# The Birmingham Eccentric

220 North Woodward

The Community Newspaper of Birmingham, Bloomfield Hills and Adjacent Areas



COME IN AND LOOK AROUND Southfield at 12 Mile Rd.