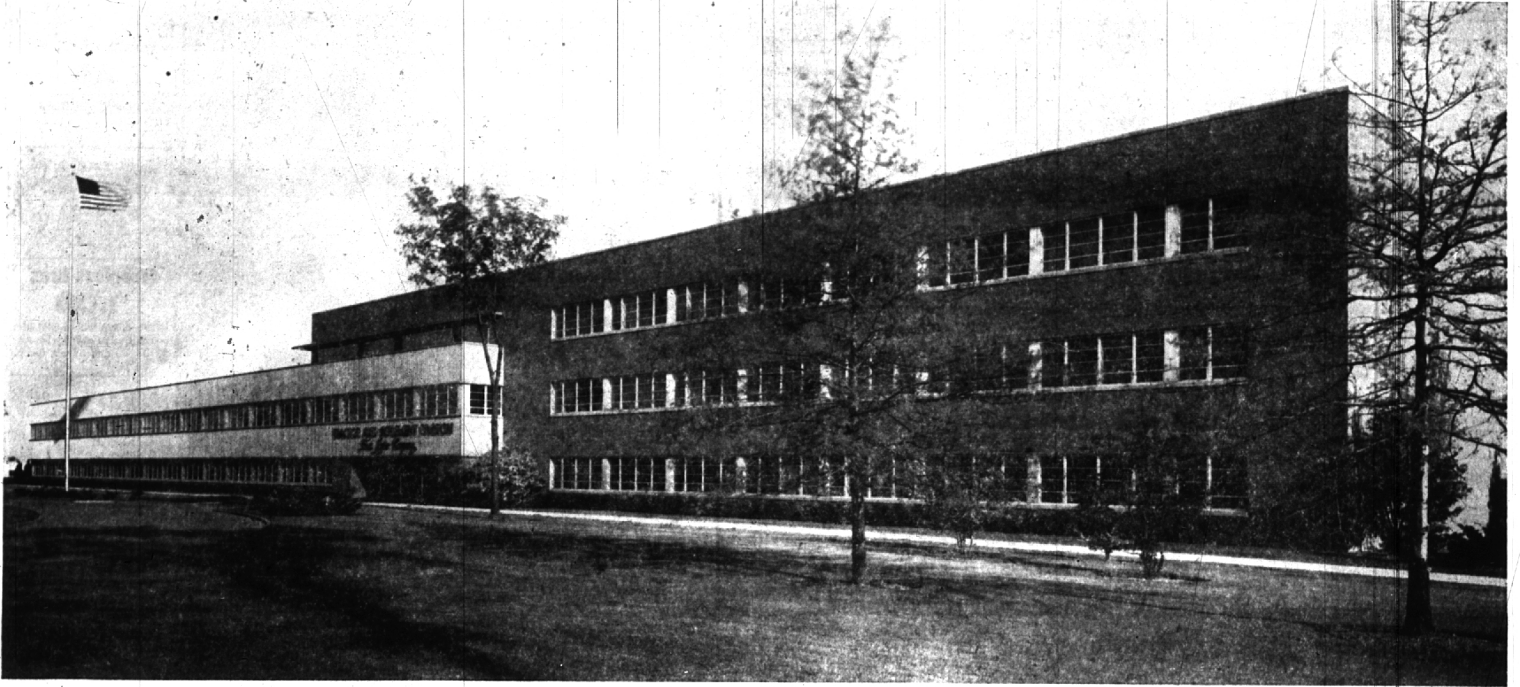


A cordial invitation

is extended to the residents of this area
to attend the Open House of our new



Farm Machinery Research and Engineering Center

--- a new and significant facility located at the national
headquarters of the Tractor and Implement Division,
Ford Motor Company, at 2500 East Maple Road

Sunday, June 12, 1955 1:30 to 5:00 p.m.

TRACTOR AND IMPLEMENT DIVISION
Ford Motor Company

“COOPERATING FOR A BETTER AND MORE BEAUTIFUL BIRMINGHAM AREA”