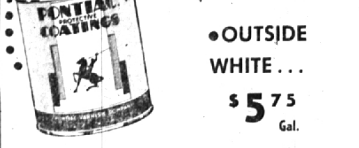


**Don't Put Off**  
**The BEST THING**  
**to Put On!**



**PONTIAC VARNISH COMPANY**  
**PONTIAC VARNISH PAINTS**  
**STAY BRIGHTER**  
**GO FARTHER**  
**COVER BETTER**  
**LAST LONGER**



• **OUTSIDE**  
**WHITE ...**  
**\$ 5 75**  
 Gal.  
**WARFIELD**  
**PAINT COMPANY**  
 250 North Woodward, Birmingham—MI 4-0910  
**FREE PARKING** in rear of store—Free Delivery



MRS. KETELSEN, MRS. PRITCHARD, COMBS AND MOFFETT  
 Retiring officers who staged final party (Eccentric Photo)

**Suburban Club Ends Season**

First year's activities ended Saturday with an "officers' party" for Suburban Club members. The club's activities, which have since its origin last fall, included a "baby bounce," a song-costume party, and a hoedown, wound up with a semi-formal dinner and dance at their usual meeting place, the Hillcrest Country club near Mt. Clemons.

As new officers looked to next year's schedule, the old officers feted members at a cocktail party before the dinner Saturday night. With expected resignations of several of the 50 couples, several from the waiting list will be admitted to membership next year.

According to Wayne L. Combs, retiring president of the group, the club is only one having dinners and dancing at all meetings, with meetings as frequent as their second Saturday of the month sessions.

**CALLING FOR** reservations this year has been the task of Mrs. Faye Ketelsen, vice-president, and her six committee women. Other officers were Paul Moffett, vice-president and Mrs. Roland Pritchard, secretary. They are shown as they completed final plans for the party last weekend.

Taking over officers next year will be Richard Saunstrom, president, Marshall Rooper, vice-president, Mrs. Thomas Taylor, treasurer, and Mrs. Fletcher Street, secretary.

The "Officers' party" featured music by Jack Daly's Trio, who plays in summers at the St. Clair yacht club.

**ALL THE SUBURBAN** club's dances are at Hillcrest, with chairmanship being rotated so that all members head or work on a committee for one of the monthly dances once during the year.

Dances are semi-formal or informal except for the formal Christmas event.

**Nevada Vacationers**

Mr. and Mrs. Walter H. Lutz vacationed last week at the Flamingo hotel in Las Vegas, Nevada. They reside at 2710 Buckingham.

Society deadline is 3 p.m. each Tuesday.

**BAMBOO** from **BESSENGER'S**

Enjoy That Picture Window View Control the Harsh Glare of Bright Skies

Use Woven Wood Drapes and Shades

**BAMBOO SHINAWOOD BASSWOOD**  
 Beautiful Beyond Belief!

Custom Made in our workshop for you. Over 40 different colors and patterns.

Available in Either Traverse Drapes or Roll Shades

All Work Planned and Installed by Our Skilled Employees

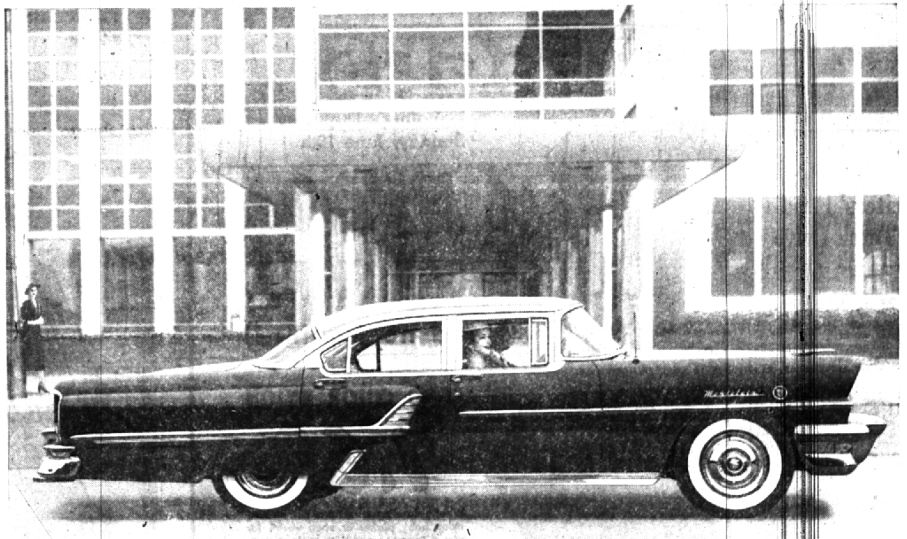
**BASSWOOD PORCH SHADES—**  
 3'-12' wide with 7' drops. Colors in stock, green or brown.

Window Shades Venetian Blinds CLEANED and REPAIRED	<b>KIRSCH DRAPERY HARDWARE</b> TRAVERSE RODS for corners, bays, etc. <b>CAFE RODS</b> Solid rods and tubular brass rods
---	--

**DON'T HAVE YOUR SLEEP DISTURBED!**  
**ASK ABOUT ROOM-DARKENING WINDOW SHADES FOR EARLY MORNING**

23535 Woodward Ave. — **BESSENGER'S** — Est. 1927  
 Near 9 1/2 Mile Rd. L.I. 1-4936

**Look! Mercury gives you four big reasons for buying during June**



SHOWN ABOVE IS the newest Mercury of all—the sleek, low-silhouette Montclair 4-door Sedan. Powerful 198-horsepower SUPER-TORQUE V-8 engine; 4-barrel carburetor, dual exhausts, standard equipment.

- 1. WE'RE OUT TO SET NEW RECORDS**  
 Mercury sales are breaking all records. More and more people who want big-car beauty and performance have joined the swing to the future-styled, super-powered new Mercury. We're going all out to keep the ball rolling and make June the biggest sales month in Mercury history. We mean business—and this month we're really dealing.
- 2. HIGH TRADE-IN ALLOWANCES**  
 for your present car. Because we're selling Mercury at a record-breaking pace, we can offer you the top trade-in. And during June, we're being extra generous.
- 3. LOW PRICE TAG**  
 Mercury prices start below 13 models in the low-price field.\* And with our special June trade-in allowances, the price actually becomes lower. Remember: you get all of Mercury's "big car value" at this low price.
- 4. EASY TERMS**  
 As part of this big June deal, your Mercury dealer will handle all the necessary arrangements to get you the easiest possible terms to fit your budget.

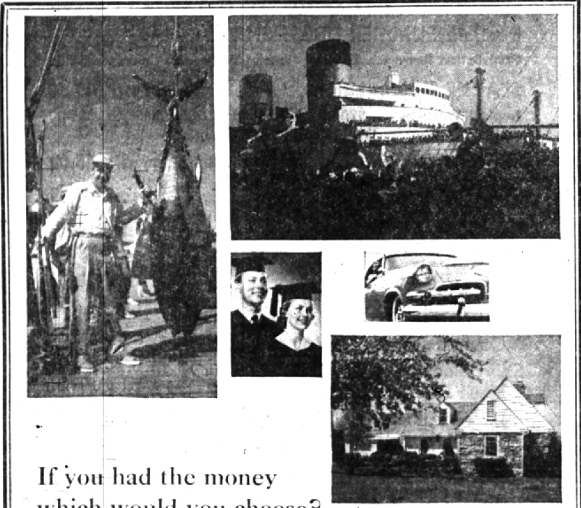
**NO OTHER CAR OFFERS YOU BIGGER REASONS FOR BUYING IT**

- Exclusive styling shared by no other car
- New 200 PERCENTORQUE V-8 engine on every model. 188 and 198 horsepower—backed by Mercury's record of producing V-8 engines exclusively
- 4-barrel vacuum carburetor on every model at no extra cost
- Dual exhausts at no extra cost on all Montclairs and Montneys
- Ball-joint front wheel suspension
- Anti-fouling high-compression spark plugs
- Consistently highest resale value in its field according to authoritative reports

IT PAYS TO OWN A **MERCURY** — FOR FUTURE STYLING, SUPER POWER

Don't miss the big television hit, **TOAST OF THE TOWN**, with Ed Sullivan, Sunday evening, 7:00 to 8:00, Station WJBK-TV, Channel 2. REMEMBER "TOAST" WILL BE ON THE AIR ALL SUMMER

**BOB FROST, Inc.** 850 S. WOODWARD AVENUE, BIRMINGHAM, MICH. PH. MI 6-2200



**If you had the money which would you choose?**

What's your fondest dream? A deep-sea fishing trip? A vacation in Europe or a new car? Sending your children to college? Or buying a beautiful new home?

If you open a savings account in an insured Savings and Loan Association—and add to it regularly—your dream, whatever it may be, will someday come true!

Right now the American people put more savings account dollars into insured Savings and Loan Associations than anywhere else!

There are good reasons for this preference—three good reasons, in fact:

1. You get excellent returns. That's because the Associations invest most of their funds in sound, steady-paying home mortgages.
2. Your money is as safe as safe can be. It's protected by good management and substantial reserves. And it's insured up to \$10,000 by the Federal Savings and Loan Insurance Corporation—an agency of the U. S. Government.
3. You're dealing with responsible people of your own home town. Friendly people. People who really know—and care about you and your community.

And here's another point: When you're thinking of buying a home, remember that insured Savings and Loan Associations are the nation's largest single source of home mortgage loans. They make liberal loans. They see to it that you get the money quickly—and at moderate rates.

Why not drop in soon at your nearest insured Savings and Loan Association. You'll be glad you did!

**BIRMINGHAM FEDERAL SAVINGS**  
 and Loan Association

• Insured Savings • Home Loans  
 Woodward at Maple Berkley Branch: 3055 W. 12 Mile Rd.  
 Member of the Savings and Loan Foundation, Inc.