

### County Survey Will Determine Spending Habits

ANN ARBOR—How and where Mr. and Mrs. Oakland County superintendents at Birmingham spend their money for retail goods is going to be surveyed by the University of Michigan.

The county's planning commission is attempting an economic study of the entire county and has asked assistance of the Bureau of Business Research of the U-M School of Business Administration in gaining information concerning retail spending.

Such retail surveys have been conducted by the bureau in 26 communities, both urban and rural, throughout the state over a three-year period but this will be the first county-wide project, according to William J. Carey, field representative for the bureau and the U-M extension service. He said he believes the survey will be the largest of its type ever done.

ONE OF THE first steps in the survey was made Wednesday, Jan. 5, when Carey explained its operation to Oakland County school superintendents at Birmingham Community House at 11:30 a.m. He asked their cooperation. The gathering was a regular meeting of that group.

Carey stated it is anticipated some 50,000 families with children in grades one through ten will be contacted through questionnaires taken home by the children.

It has been found in the past that such families generally are interested in all types of retail buying, Carey explained.

The questionnaires, which are to be returned unsigned, will ask Mr. and Mrs. Oakland County such things as how large is their family; how long they have lived in the area; if they own or rent their home; in what areas they purchase certain types of goods; how parking space, prices and attitudes of sales persons influence buying; and how much they purchase outside the county.

IT IS EXPECTED that the survey will be completed by July 15. Oakland county population has increased considerably in recent years with some of its cities reporting a 500 per cent gain in the past decade.

The county includes such cities as Royal Oak, Birmingham, Pontiac, Farmington, Hazel Park, Rochester, Ferndale and Walled Lake.

### YMCA Activities Begin New Year

BIRMINGHAM Y.M.C.A. Grays, H. Y. clubs along with the basketball and volleyball groups have reconvened after the recess for the holidays and are meeting on regular schedule.

The volleyball group at Baldwin Elementary school on Thursday nights still needs players so that four intramural squads may be formed. Men who are interested are asked to talk to Warren Newville. Please bring equipment ready to play.

### Necessity Hearing Date Set by City

Replacement of an existing private sewer by a public one will be considered Jan. 24 at a hearing before the Birmingham city commission.

To serve eight properties on Oak street, west of Chesterfield, the new construction would cost \$8,450.

Property owners desire the new sewer to replace basement floodings.



MODELS OF Great Lakes freighters are the products of many hours of work by William Schultz, 17, in his home basement workshop at 1390 Suffield. (Eccentric Photo)

### High School Model Builder Duplicates Lake Freighters

By WILLIAM F. ZACK

Seventeen-year-old Bill Schultz, an eleventh grader at Birmingham high school, has an ambition to become an engineer and if the models he builds are any indication, he will be a good one.

At his home at 1390 Suffield, Schultz painstakingly creates miniature replicas of planes, cars, and more important, carefully detailed models of lake freighters.

During the summer, he studied the appearance and construction of the actual freighters themselves, and reproduces them as closely as possible.

Schultz has as yet no definite idea where he will study after high school graduation. He still is undecided between a career in aeronautical or automotive engineering. His father is a supervisor of a Detroit automobile plant, and is of course proud of his son's mechanical skills.

ON EACH ship, Schultz spends an average of 25 hours carefully fitting the tiny parts together to form a 36-inch-long model that is a marvel of accuracy and detail.

The ships are powered by electrical motors and balanced so that they give the exact appearance in the water of a deeply laden freighter bringing its cargo into port.

In Ethiopia, natives celebrate the birth of Jesus 19 times a year—once every month and twice in April—holding that Christ had so many attributes that He could not have been born but once.

### Symphony Seeks Young Soloist

The Detroit Symphony Orchestra is seeking a young instrumentalist to be soloist at the final Young People's concert of the season Feb. 12 at 11 pm in the Masonic auditorium.

The four sponsors of the series, the Junior Leagues of Birmingham and Detroit, the Women's Association and the Junior Women's Association for the Detroit Symphony, are currently conducting a contest to find a talented young performer for the concert.

Contest winner will be soloist with the full Detroit Symphony, Valter Poole conducting.

Mrs. Frank J. Sladen Jr., contest director, has announced that contestants must be under 18 years of age, residents of the Metropolitan Detroit area and able to play a concerto with the orchestra. The contest is open to players of any orchestra instrument except piano.

Assisting Mrs. Sladen at preliminary auditions Jan. 18, will be Mrs. Jay L. Haumen, Mrs. Robert Wardrop and Miss Margaret Minnebach.

Finalists will be judged Jan. 25 by Paul Paray, Detroit symphony orchestra conductor, Valter Poole, associate conductor, and Howard Harrington, manager.

Contest entry deadline is Jan. 18. Applications must be made to Mrs. Sladen at TU 8-5182.

**BIRMINGHAM BLUE PRINT AND SUPPLY COMPANY**

W. S. McAlpine, Prop.  
C. G. Anderson, Mgr.

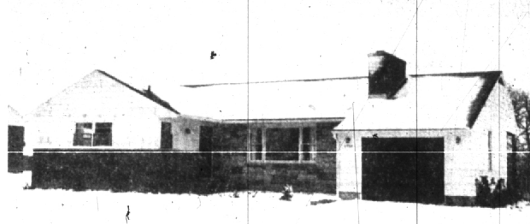
- Blue Prints • White Prints
- Photostats • Transparencies

**QUICK SERVICE**  
while you wait—no pickup & delivery

Ph. MI 4-3738

Located in Birmingham, Suite Woodland, 200 S. Woodward  
Open Weekdays 8:30 a.m. to 5:30 p.m.  
—WE AIM TO PLEASE—  
Operator of 21 Years Experience

### VAUGHAN SCHOOL



Start the New Year right in this value-studded, year old, ranch home. Three bedrooms, 2 tiled baths (full shower in master bedroom) and spacious birch kitchen with eating space are featured. Its recreation room has a fireplace and is paneled in knotty cedar.

It's excellent for children—Vaughan School bus stops at the door! Forest Lake C.C. is but a minute's drive. A tremendous offering at just \$24,900.

MAY WE MAKE YOUR APPT. NOW?

**HALL & YOUNG Inc.**

Maple Road at Telegraph Bham: MI. 6-2700  
Del: JO. 4-5668

### The Right Combination



Lot 80 x 141 feet

A brick and frame Colonial on a quiet tree lined street. Excellent, friendly neighborhood and a short walk to grade school.

1st floor: Large living room. Separate dining room. Sunny den, breakfast room. Screened porch, lavatory.

2nd floor: Three "twin size" bedrooms, tiled bath, large closets. Built-in features.

Inclusions: Carpeting, Dishmaster, outdoor grill. Two car garage.

If you are looking for a very attractively decorated home in a fine location see us about this one for only \$25,500

**WALSH, JAMES & WASEY CO. REALTORS**

431 S. Woodward Avenue, Birmingham  
Midwest 4-6500 or Detroit phone Jordan 4-6033

IN CONTRAST to many model makers, Schultz does not use prepared kit materials, plans or photographs in his construction work.

**Complete Convenient Services on Residential MORTGAGE LOANS**

Use our nearby suburban office for FHA or conventional loans on new and existing homes. Experienced sales services also available.

**HOMER WARREN & COMPANY**

600 Home Bldg., Detroit 26  
Wholesale 1-8321  
Suburban Office  
4268 N. Woodward Ave., Royal Oak  
Jordan 6-3188

---

**MARK WESSEL**  
Pianist Composer  
Teacher  
Studio Home 3815 Old Indian Trail, Orchard Lake  
Phone FE 4-5666

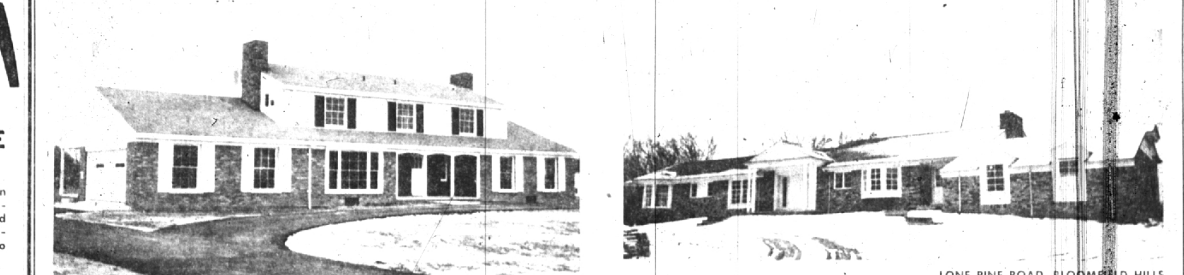
---

**INSURANCE - BONDS THE BIRMINGHAM AGENCY**

INSURANCE FOR EVERY NEED  
Phone MI 4-2422

106 S. Woodward - Birmingham  
Chas. H. Randall  
Oscar P. Peterson  
AFTER we SELL we SERVE

### STATELY BEAUTY



No. 5 WOODBERRY DRIVE, BLOOMFIELD HILLS

One of the finest ranch type homes we have ever offered:

Living room 24'x16', Dining room 18'x15'  
Mahogany paneled Activities room 18'x13'  
Spacious kitchen with large breakfasting space  
Three lovely bedrooms, two superb baths  
Lavatory. Full basement

On a hilly lot in an apple orchard. Just west of Cranbrook School.  
Open Sunday 1:00 to 5:30  
Ask us to show you by appointment. \$63,500

Splendidly built English Type home; steel joist construction  
Five rooms including bedroom and bath on first floor  
Five bedrooms and three baths on the second floor  
Valuable carpets and drapes are included.

A wonderful home for a large family. Close to the high school, grade school, churches, bus transportation, and small shopping center; yet exclusively quiet.  
Open Sunday 1:00 to 5:30, and shown by appointment. \$42,500.

**Be Sure It's Kaufmann ALUMINUM DOORS, WINDOWS, JALOUSIES, SCREENS**

De Luxe Comb. Sash  
Custom Comb. Sash  
Side Sliding Combination  
12" De Luxe Door  
Picture Window  
Casement Storm Sash  
Basement Comb. Sash  
Low Priced Door  
Jalousie Porches

"Three Million Windows of Experience"

A DELUXE line and a QUALITY price-line to choose from. Free Estimates—No Money Down—10 Years In Pay. Fully Guaranteed. Factory on Detroit. Factory Installed. We sell your Sash and Screen repair.

**KAUFMANN Window and Door Corp.**

17210 GABLE Near 6 Mile and Mound Rd. TW 3-2000



316 SOUTH GLENHURST

**Watt, Manuel & Snyder, Inc. Realtors**

298 South Woodward  
Midwest 4-6300

Birmingham, Michigan  
Jordan 6-2323