



THE luxuriously-appointed lobby (left) gives a hotel-like atmosphere to the new building.



THIS modern snack bar (above) off the lobby will be open daily from 8 a.m. until 10 p.m. and will include a pharmacy.



SPACIOUS rooms for visitors (right) are provided on each floor near the elevators.

William Beaumont Hospital, Tribute to Modern Medicine

PHOTO STORY by NORMAN DOUGLAS

When residents of South Oakland county and the entire metropolitan Detroit area tour the new William Beaumont hospital this weekend, Saturday and Sunday, during the open house, they will be reviewing the most modern hospital facilities available.

The two-day open house is to acquaint the population of over 280,000 with their own hospital, a dream of the area for over 10 years and under construction for the past 18 months.

The new five-story building is at Woodward and Thirteen Mile road.

The gleaming \$5 million structure is on a 105-acre tract and is complete in every detail. Planned as a training hospital, the 236-bed building also has been planned for expansion with the proposed population growth of its surrounding communities between Detroit and Pontiac.

and all other building features have been constructed to enable the hospital board to add another five stories as the need is evidenced.

A complete out-patient department for emergency cases is one of the building's major features.

But everywhere the features of convenience, planned accessibility and color evolve an atmosphere of warmth and comfort in the hotel-like surroundings.

From the well-appointed spacious lobby to the efficient modern laboratories, the building, reflects the careful planning, that preceded its construction.

A combined pharmacy and snack bar opens directly into the lobby in the same partitions of plate glass that front the administrative offices.

room, medical library, out-patient department, interview and record rooms.

Three elevators now service the five floors with a fourth shaft ready for use when the need arises.

The second floor is devoted to surgery, physical therapy, maternity facilities, X-ray and laboratories.

Here five green-tiled operating rooms with shadowless fluorescent lighting stand ready for use.

Floors three to five are filled with patient's rooms and the necessary facilities for modern medical care.

The new hospital has completely passed ward operation. Majority of rooms contain two beds, with a few private rooms and deluxe private rooms also available on each floor.

Each room is a unit within itself with private toilets and built-in metal drawers and locker combinations for personal effects, direct oxygen lines piped to every room, a highly-sensitive communication system from room to nurse's station and television antenna outlets.

Beds are of the latest design and may be lowered and raised automatically for proper patient care.

Each floor is serviced by a small kitchen where dumbwaiters carry food directly from the central kitchen. Automatic machines are provided in each floor kitchen.

Bed floors also include a visitor's waiting room where comfortable modern furniture and wide windows will reduce the off-time tedious wait.

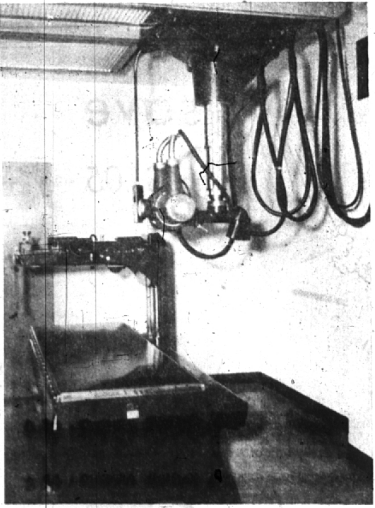
Essential functions at William Beaumont.

Centrally located in the midst of the 144 square mile area it will serve, the site offers adequate parking facilities, a separate building for the hospital's over-all air conditioning plant and plenty of room for future expansion... expansion that soon may mean a further enlargement to the out-patient department.

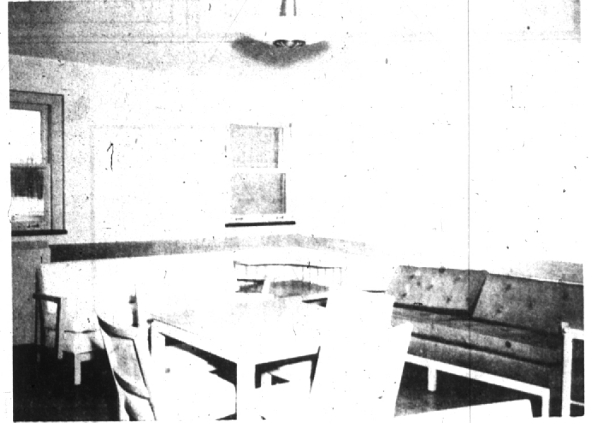
Officers of the hospital are Edwin A. Tomlinson, president; Franklin Fricker, vice-president; Lawrence S. King, vice-president; John E. Martz, secretary; D. L. Tate, treasurer; E. L. McCullough, assistant secretary.

Chairman of the medical executive board is Dr. Howard Baker, and members include Dr. R. E. Hammonds, Dr. Robert B. Hasner, Dr. Herman D. Scamney and Dr. Palmer E. Sutton.

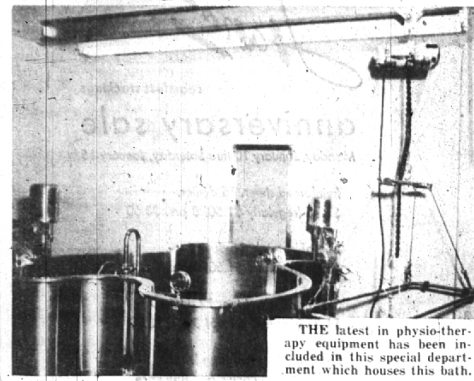
Owen R. Pinkerman is hospital director.



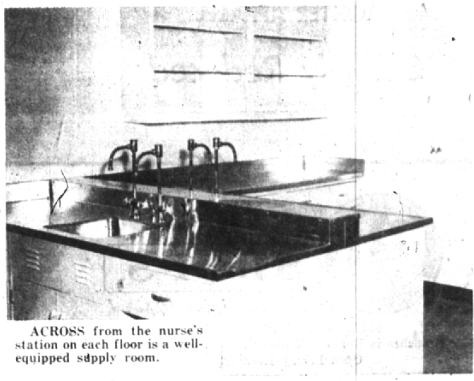
AN extensive X-ray department contains the most modern of equipment like machine at left.



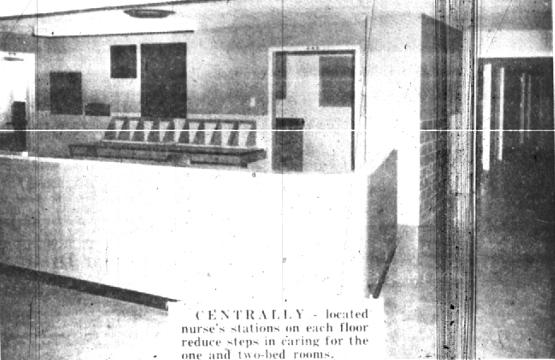
THIS restful lounge (above) is located near the operating rooms for the doctors complete with showers, toilets.



THE latest in physio-therapy equipment has been included in this special department which houses this bath.



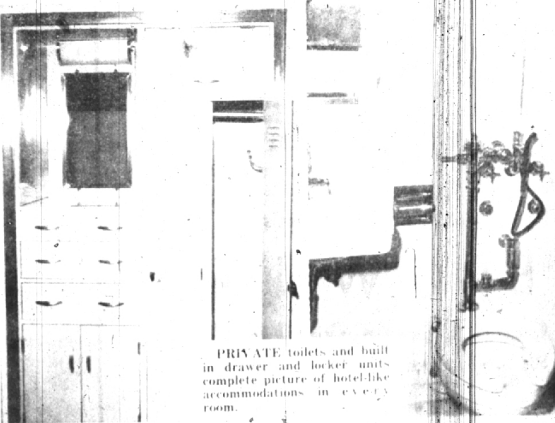
ACROSS from the nurse's station on each floor is a well-equipped supply room.



CENTRALLY - located nurse's stations on each floor reduce steps in caring for the one and two-bed rooms.



EACH PATIENT'S room offers best in light, privacy and facilities. Piped oxygen, TV outlets and sound system included.



PRIVATE toilets and built-in drawer and locker units complete picture of hotel-like accommodations in every room.



GAILY painted rooms for young children are situated near a small nurse's station for complete care.