

# Chronology

(Continued from Preceding Page)

it is completed, may house a parochial elementary school sometime in the future.

Walter C. Rohrmoser of Ranch Lane, Bloomfield Hills, died Oct. 16 after suffering gunshot wounds when the gun he was carrying accidentally fired on a hunting trip near Ludington, Mich.

Bloomfield Hills board of education members this week disclosed that a second school expansion bond issue may be placed before district voters early in 1955. Increased school populations have already pointed out the need for a new elementary school and future school sites.

Issue of October 28

Representatives of the twelve communities in South Oakland county last week agreed to push engineering plans for the proposed \$30,000,000 Twelve Town Drain system to alleviate flooding in this area.

City and school officials prepared for over 7,000 youngsters at the annual city Halloween party.

City and township election of-

ficials also awaited a suggested record off-election year vote in the Nov. 2 general elections as 38,000 area residents qualified for the vote.

Circuit Court Judge H. Russel Holland this week ruled "no cause for action" in the six-year-old damage suit brought by a Royal Oak dentist against the Birmingham school district. The dentist sought damages for injuries "suffered" when the bladders collapsed at a Royal Oak Birmingham High school football game in 1948.

Birmingham high school graders last week upset a tough East Detroit eleven to move into a four-way tie for second place in the Eastern Michigan League football race.

Issue of November 1

With Birmingham turning out a recent off-election year vote in the November 2 state general election, and the areas surrounding the city registering comparable balloting percentages, area voters helped Oakland county continue Republican legal rule in a Democratic

landslide throughout the state.

Lathrop Village voters approved the city's acquisition of the subdivision's water system, but votes in Northfield to raise millage for the Evergreen interceptor sewer and if Troy to increase increased fire and police protection failed at the polls.

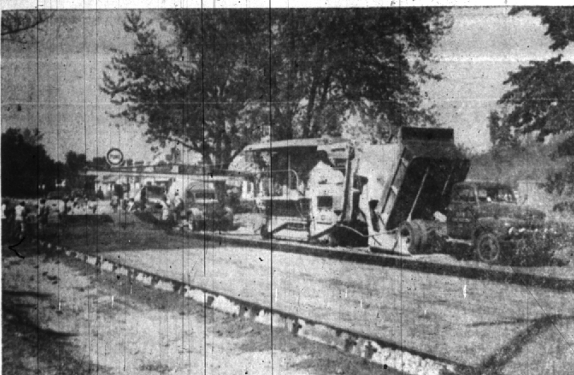
A 600 percent increase in the number of trees infected by Dutch Elm disease during the past year was reported this week by City Forester William Lebold.

The new Presbyterian church on West Maple was to be dedicated Sunday, Nov. 7. Construction began at the building in 1952 and the first service in the \$125,000 structure was held on Mothers' Day this year. The building represents the fourth church used by the Presbytery congregation in over 100 years of worship here.

Harold J. Hall, manager of the Birmingham branch of the Detroit Edison company for the next 10 years and an employee of Edison for 30 years, retired this week. At the same time the Birmingham branch was consolidated with the Oakland office in Pontiac.

Issue of November 11  
For the second time in nine weeks, Birmingham city commissioners this week approved the necessity of a 23-car off-street parking lot on Pierce street south of Merrill and determined that as-

(Continued on Next Page)



WORKMEN HERE ARE FINISHING the center strip of the widened West Maple pavement between Linden and Glenhurst, which was opened again to traffic the first part of October.



POPULAR TV COMIC Red Buttons stowed high school students at an assembly at the school before appearing in downtown Detroit at a Torch Drive luncheon, Nov. 2. He is shown here with Ted Donay before recording for the high school varsity show.

**APTITUDE TESTS**  
enable YOU to learn the kind of work YOU can best succeed in, or the kind of studies YOU should follow. For men and women, tests and plans for Vocational Counseling Institute  
Daniel L. Beck, Director  
958 McClellan Bldg., Temple 1-1551  
Woodward near Warren

**TRAVEL INSURANCE**  
  
\$5000 Accidental Death,  
\$500 Medical Expense,  
Worldwide Coverage.  
  
Ideal for Tourists and Travelers. 11 Days for only \$3.00. Other Limits to Suit Your Need.  
  
LAWRENCE McKAY, Jr.  
264 Briggs Bldg.  
Birmingham  
MI 4-2800

Second Week of

## LAMP SALE

All styles including table, floor, pin-up, boudoir and hurricane models  
... all lamps by the best known manufacturers—domestic and imported

### Boulevard Shoppe

Fine Gifts and Lamps

S. Hunter Blvd., Phone: MI 4-5777  
at Lincoln

**BAMBOO** from **BESSENGER'S**

Enjoy That Picture Window View Control the Harsh Glare of Bright Skies

Use Woven Wood Shades and Drapes  
**BAMBOO SHINAWOOD BASSWOOD**  
*Beautiful Beyond Belief!*

For Colonial Homes use quaint whites and ivories  
For Contemporary Homes use any of dozens of colors

Available in Either Roll Shades or Traverse Drapes  
All Work Planned—Made—Installed by Our Skilled Employees

Window Shades Venetian Blinds CLEANED and REPAIRED

**KIRSCH DRAPERY HARDWARE**  
TRAVERSE RODS for corners, bays, etc.  
CAFE RODS  
Solid rods and tubular brass rods

2335 Woodward Ave., Near 9 1/2 Mile Rd. —**BESSENGER'S**— EST. 1927 11-1-4936

Start the New Year with New-looking Ties

**Ridley CLEANERS**

**SPECIAL!**  
Thursday—Friday—and Saturday!

# 6 Ties

Beautifully Cleaned and Pressed

# 49¢

"Cash & Carry" or "Call & Deliver"

Here's a great opportunity for every man in town to have a big supply of beautifully cleaned neckties on hand—and to save real money besides!

Call Lincoln 6-9500  
Or Visit Ridley's "Cash and Carry" Store  
**361 E. MAPLE** Near Woodward

**PENNSYLVANIA HOUSE**

# Solid Cherry

A Colonial Setting for Graceful Dining in the Modern Manner

Gateleg table opens and extends to 96"

54" Hutch base	\$184.00
China with crown glass doors	\$148.00
Gateleg extension table	\$169.00
Ladderback armchair	\$39.00
Ladderback chair	\$33.00
Serving Wagon	\$123.00

**Styled in the Captivating Colonial Manner**

Every Graceful Swirl and Feather-Light Line of the True Cherry Grain Has Been Captured Furnishing for Tomorrow's Home. You'll Be and Dining Room Pieces from the Pennsylvania House Collection. Solid Woods, in Simple Fortright Colonial Designs. Cater to Your Cherished Dream for Truly Gracious Furniture. As a Single Piece or the Complete Furnishing for Tomorrow's Home. You'll Be Glad You Started With Solid Cherry Furniture From Our Pennsylvania House Open Stock Collection.

**Triangle FURNITURE CO.**

- 128 S. Woodward, Birmingham
- 220 Washington Drive, Royal Oak
- Ferndale
- Mt. Clemens

**Colonial Shop**

Open Fri. Eves Till 9

CONVENIENT TERMS ARRANGED