

### Want \$200 to Equip Observers' Station

Declaring that cold weather was seriously hampering the activity of Birmingham's ground observers post on Baldwin school, George S. Wiley, post supervisor, has asked city commissioners to appropriate \$200 to provide better protection for watchers.

Wiley said that during summer months, a number of persons are willing to man the post but when winter comes, it is nearly impossible to get volunteers.

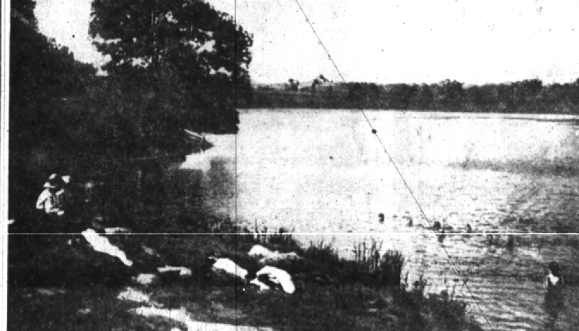
The real reason that communism is making headway today, because so much of this earth's population is not only hungry, but equally ignorant. It is because it is the "better life" to whole populations; it is rigged to "latten" only its leaders.

# The Birmingham Eccentric

## Birmingham Background

Local History in Story and Picture  
As Compiled and Written by RUTH ANNE SILBAR

The Old Swimming Hole, Birmingham, Mich.



MILL POND BECAME QUARTON LAKE AFTER 1915  
Photo from the collection of Mrs. Harry Allen

## Mill Pond Attracted Village Sports

Birmingham's popular recreational area used to be the village mill-pond—now dignified by the title, "Quarton Lake." It was a favorite fishing spot and according to The Eccentric of June 1880, the average village youth went ballheading down at the mill pond after dark.

Besides ballheads, the lake teemed with pickerel, bass and perch in the early days. There are many instances recorded on the pages of the local newspaper where local Isaac Walton caught "big ones" as well as little ones. Frank Sherman, carrier, hiker and leader of the village band, caught a "five 3-pound pickerel" as he fished through the ice in the winter of 1881, while Charlie Hoff, baggage smasher at the depot, opened the winter fishing season in Nov. 1882 by catching a fine string of pickerel, a great many of which would weigh 20 pounds.

IN THE DAYS when spearing fish was legal, George Toms, the village barber, speared a fish in the pond that weighed 150 pounds. In April, 1880, Nobody seemed to know just what kind of fish it was as it "acted like a bulldog but had a mouth like a sucker." Spearing fish by lamplight was

one in their ice house near the mill pond.

In the winter of 1880, The Eccentric noted that "many of the finest ice we ever saw was harvested from the pond. The quality was simply perfect, averaging about 16 inches in thickness and very clear."

IT WAS IN the month of 1884 with the inauguration of a new bridge that Joseph Boal, had the ill luck to take a tumble into the lake while engaged in getting out

He disappeared beneath the surface waters, seeking the depths of the mill pond, but was quickly fished out and taken care of.

The water of this lake was the mill pond covered, with men reaping the ice harvest and they were securing a fine crop of the best ice. "Pitch in, boys," urged The Eccentric. "They do say this is the last year that the pond will be cropped."

It was, for the following year, Quarton Lake. Estates were laid out and lots were for sale. It was the beginning of the end of the village mill pond and the birth of Quarton Lake.



SWIMMING SUITS A "MUST" AFTER 1908  
Photo from Mrs. Harry Allen

all the fashion in 1881 but by 1887, a law had been enacted making this practice illegal.

IN NOV. 1907, The Eccentric warned, "Anyone caught trapping muskrats during this month are liable to jail. Remember boys, muskrats gamboge caught lawfully until Dec. 1."

WINTER found ice skaters on the pond with the boys playing "Shinny," a version of hockey. Besides cut lips, banged-up noses resulting from this vigorous game, there was always the danger of breaking through the ice.

Bert Baldwin, son of John Baldwin, village blacksmith, took an involuntary bath in the mill pond in Feb. 1880 while skating.

THE ICE KEPT breaking with him while he tried to climb out until, completely exhausted, he calmly asked the crowd of young men and boys standing around if they were going to stand there with their mouths open and see him drown. They then got a board and helped him out.

ICE houses were replenished during the winter months and during the winter months of ice were taken from the lake. Thorne and Converse, local butchers, stored their

we heard it said by: ROBERT F. WAHL, of Watt, Mammel & Snyder, Inc., local realtors: "I think The Eccentric did a splendid public service by publishing, several weeks ago, a story and map showing the tentative route of the proposed Michigan Turnpike between Detroit and Bay City. This news has alerted individuals and communities affected by the need for studying the problem, and how to protect themselves against any undesirable encroachment of the route on their property holdings."

Want a good used car? Look in the Classified columns under "For Sale—Automobiles."

FOR THE FINEST IMPORTED AUTOMOBILES Visit FAEVEY SALES AND SERVICE 22600 Woodward Ave. Ferndale. Phone Lincoln 3-5000

**SCHUTZ MOTORS, INC.**  
912 South Woodward  
MI 4-7811

DeSoto authorized dealers for

**DE SOTO PLYMOUTH**

Sales and Service  
USED CARS

**RENT! A New Portable Typewriter**  
(all makes available)  
**\$5** per month

Birmingham Printing's Rental-Ownership Plan!  
Up to 3 mos. Rental Applied on Purchase!  
Should you decide to buy—Pay Balance \$5.00/Mo.

Used Standard Machines Also Available  
Free Delivery — Free Typing Instruction Book — Carrying Case Included

**Birmingham Printing and OFFICE EQUIPMENT Co.**  
369 EAST MAPLE AVENUE Midwest 4-4740

**QUALITY DRYCLEANING 4 HOUR SERVICE**

**BIRMINGHAM CLEANERS**  
Woodward at Adams Rd.  
(We Give S&H Green Stamps)

It's Fun, It's Easy **PAINT-UP** with the new **INTERIOR FINISHES**

They allow you to paint, settle and use the room the SAME night! They...

**DRY IN 2 HRS. or less.**

and they have **NO OFFENSIVE PAINT ODOR!**

Ask for either the alkyl resin, rubber base or devon base paints. An excellent finish for those persons allergic to paint odors.

**BIRMINGHAM PAINT**  
Glass & Wallpaper Co.  
335 E. Maple MI 4-3737

Store Hours Monday thru Friday, 8:30 to 5:30; Saturday 8:30 to 5:00

**C of C's Machine Solves House Hunt**

For a while last week, it appeared that the 1955 Cummans House Roll Call would get off to a shaky start next month—for the lack of an addressograph machine. The house board had asked the roll call city for the loan of its machine. The Roll Call this can proceed but City Assessor Elmer W. Hanck as

**BOY SCOUTS**

**B-27 Dog Sleds Enter "Klondike"**

Troop B-27 entered six patrol sled races in the Scout and Dad Klondike held at the Pontiac Recreation area Saturday, Jan. 22. Scout troops of this area participated in the race to the "north pole," where each group received sealed instructions to proceed to set up base camps, and competed in Scouting contests including fire building, emergency signaling, first aid and rescue work.

Activities ended about 4:30 p.m. Saturday at the free soup kitchen and dog sled stand where winning patrols received contest awards.

Scoutmaster Gil Gilchrist plans to use the patrol sleds made by the Scouts in a display in a downtown store window during Boy Scout Week, Feb. 6-12.

**Emergency Corps Training Class Starts at Baldwin**

Emergency Service Corps training Explorer Scout in this area has started again under the direction of Glenn Emery.

The 20 eligible Explorers now enrolled in the course are Doug Wilkins, B-1; Ken Quirk, B-17; Richard Gies, B-1; Bob Tracy and Robert Yingling, B-11; Tom Plant, Bob Henson, Bill Akorn, Bob Paulette, Bill Johnson, B-5; Mike Brandt, John Cooper, Keith Haskins, Mike Harper, Ted Rouds, Bill Bickman, B-8; Paul Turner, Bill O'Boyle and Wayne Wells, B-27.

**La Belles**  
137 West Maple  
Birmingham's Shop of Books, Stationery and Gifts

**JANUARY PIPPINS**

1. Leave us consider salt—fine salt, Detroit rock salt, Medium Flake salt, pelleted salt and Louisiana rock salt —as is supposed to be fer water softeners. They all make brine—same kind of brine and same strength brine. BET they don't all act the same because they get different rates of dissolving and different characteristics.

2. Softeners of the direct salting type cannot use rock salt satisfactorily.
- Brine tank jobs (two tanks) seldom can be operated with fine or medium flake salt.
- Direct salting (types with high capacity resin seldom do good with fine (granulated) salt.
- Know what your requirements are and then call us. We deliver without charge—can even put you on a delivery schedule which will keep your mind empty and your softener full.

- Incidentally, the salt companies have eliminated cotton bags and also the 50 lb. package on all but pelleted salt.
- Geographically speaking our regular delivery program covers the northwest quadrant (about equal to two slices of cherry pie) in the morning. All other areas are served (and how!) in the afternoon.

- On Wednesday it's different. We mount our trucks in the morning and ride off in all directions. Of course, you know that if you are in a p.m. area you shouldn't order for a Wednesday delivery just to get it in the morning because we have more than we can do that morning and you'll have to wait until Thursday anyway. So, there!
- DOUBLE CAMELLIA FLOWERED TUBEROUS-ROOTED BEGONIA tubers are now here and ready for your discriminating pinching and purchasing preparatory to potting.
- SINNINGIA SPECIOSA — otherwise known as GLOXINIA—tubers are now here and ready for your discriminating ditto, ditto, ditto.
- P.S. to No. 3 & 4. It is too early to start them now for outdoor planting but just right for indoor growing.
- LET'S get these PAPERWHITE AND PAPER YELLOW NARCISSUS and AMARYLLIS out of here before spring gets here.
- You may think we have them. We have—more than one! However, they are IMPORTED DANISH LILY-OF-THE-VALLEY PIPS. Alice Burlingame, please note! Easy to grow they will fill your rooms with a fragrance exquisite and later can be planted outdoors.

Come in and look at our pipe

**McCLELLAN-BALL CO.**  
SUPPLIES

YARD GARDEN FARM KENNEL  
BIRMINGHAM, MICHIGAN

Phone MI 4-4133 159 Brownell St.