



THREE AREA MEN have been named assistant vice-presidents and two assistant cashiers of the Detroit Bank, according to William B. Hall, vice-president. All promotions were effective January 1. Assistant vice-presidents are George E. Clark, 2109 Manchester; Leon H. Hanselman, 2748 Hylane, Troy township; and Albert W. Holcomb, 2242 Fairway. Assistant cashiers are D. James Watson, Jr.; and James M. Washburne, 25175 Thirteenth Mile. Franklin Clark started with the bank in 1945 and was made an assistant cashier in 1951. A member of Holy Name church, Clark is chairman of Cub Scout Pack 4-23. Hanselman started with the bank in 1941 and was also made an assistant cashier in 1951. He is a director of Meadowlark Improvement Association and a member of the Troy township zoning board. Holcomb, an assistant cashier since 1951, joined the bank in 1946. Secretary of the Pembroke Manor Association, Watson started with the bank in 1946, and is active with the Naval Reserve. Washburne is a member of the Franklin Community Association, the Franklin Community church and is a committeeman for Franklin Boy Scout Troop 1-11.

DOWN TO EARTH

Use 'Different' Plants for Added Interest

By ALICE WESSELS BURLINGAME
Special Writer for The Birmingham Eccentric

It was a real privilege for Oakland counties to visit the recent Open House of the William Beaumont hospital. As you approach the entrance of the hospital your eyes are at once attracted to the polished aluminum relief executed by the famous local artist, Marshall Fredericks.

There you see the figures of a mother and father with two children, with a few leaves at their feet. The inscription is a salute to crude drugs: "The leaves of the tree were for the healing of the Nations." This art expression set the stage for the fine design within and was presented to the William Beaumont Hospital by Lola Jennings Erb, in memory of her husband Louis G. Erb. Recently the fine local hobbyist of African violet, Mrs. Robert Vander Pyl, gave a talk on the culture of raising these fine plants.

She emphasized the importance of using lukewarm water and a scheduled feeding for them.

SHE WASHES the plants every two weeks under a lukewarm spray and keeps them out of the

found the small stem tulips as satisfactory in such a setting. To round out the cycle of interest, bleeding hearts and Virginia bluebells give splendor.

For those who have not tried bluebells they will find they have hairy interesting leaves, stems about 18 inches high and have rose pink bell-shaped flowers.

After flowering the plant dies down and disappears which is a challenge for the forgetful gardener not to plant right on top of it. These plants can be grown from seed planted in June and I would surely place these seeds in my order if I had lots of shade.

FORGET-ME-NOTS are so effective and with open fertile ground near the plants will reveal readily. When these colorful biennial plants are suggested I always recall the splendor of for-

get-me-nots as they are seen on the Dow family estate in Midland, planted by the Senior Dow who had gardening as his hobby. Those stately trees and form a shadow effect and a grand ground cover.

Violas are hardy annuals which readily self sow and are suggested for the shady garden. They should be massed for an effect due to their small size.

For the best vigor the plants should be divided every other year. They respond very well to propagation by division and it is suggested that you place a photo such as a fruit box over the plants

for the first week after watering well.

MRS. DIBBLE suggests that prunings be used in a half shade area and that you will have the best results if you buy them in a flat in bud and not at the flowering stage. As the summer progresses if you build up the sides of the plants with manure they will prosper and not dry out in midsummer.

Prunings are very effective in half shade. They love to be near a stream for moisture. Once I saw an effective planting of prunings at the base of apple trees along a garden path.

Double arabis are about 10 inches high and give a good early spring show. Most of them are white. They should be divided every three years.

SHE HAS many varieties of ferns in her shady garden, coming

We Heard It Said By:

Mrs. F. W. BREHM, 520 Hawthorne: "I don't know why the city doesn't fix the pipe for the mineral fountain on West Maple. It would cost too much. It was wonderful. I thought, and so full of water. When I was a girl living in Alma, we had a fountain in our basement with water very similar to the West Maple mineral spring water. I for one always have been sorry that the well hasn't been kept in operation."

Thousands of people read The Eccentric Classified Ads. So remember, if you want to sell that hard-to-get-rid-of article, advertise it in the Want Ad section of The Birmingham Eccentric.

Teacher: "What is the difference between a cow and a calf?"
Willie: "A big feed bill, mum."

**DRAPERY HARDWARE
TRAVERSE RODS
For Bays, Corners, Ceilings**



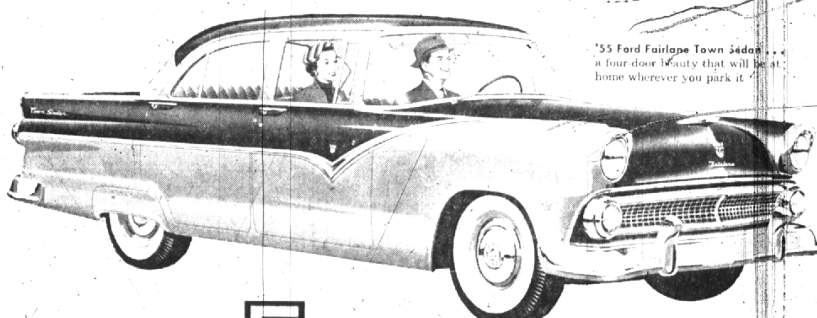
- * Window Shades
- * Bamboo Draperies
- * Venetian Blinds
- * Woven Wood Shades
- * Curtain Rods
- * For Brisbane-Cafe Curtains

Complete Line of Hooks, Weights, Threads, Pleater Tapes, Etc.
CLEANING — REPAIRING

2355 Woodward Ave.
(Near 91st Mile Road)
Lincoln 1-1936

BESSENGER'S

*Now is the time to buy
your '55 FORD!*



'55 Ford Fairlane Town Sedan... a four-door beauty that will be at home wherever you park it.

Here are 5 good reasons why:

- 1 It's always a thrill to own a great new car. And there's an extra thrill in driving the car that everybody is talking about... like they're talking about the new '55 Ford. There's no wonder that the 16 beautiful new Ford models are creating such a lot of excitement. For they are styled to mirror the beauty of the Thunderbird—the famous Ford personal car that has won the warmest approval of motorists all over the country. You see the long, low graceful lines of the Thunderbird reflected in every Ford model for '55. You have a broad range of exciting new single and two-tone body finishes from which to make your selection. And you can take your pick from an exceptionally wide variety of beautifully color-keyed interior schemes to "tailor" your new Ford to suit your individual preferences. Printed illustrations just can't depict the beauty of the new Fords. For your fullest enjoyment and appreciation, visit your Ford Dealer and see these brilliant new Fords "in the flesh." Then get in and Test Drive Ford's thrilling new Trigger Torque power. You'll like it!



You can share in the growth of your community!

Your dollars in a Birmingham Federal savings account, work hard TWO ways... for your community and YOU! They finance the building of homes, help your community to grow. They earn a generous rate of return for you, help your savings to grow... faster. Their safety is insured up to \$10,000. Your savings account book is the passport to a bigger, better future for your community... and YOU!

BIRMINGHAM FEDERAL SAVINGS AND LOAN ASSOCIATION

Member of Federal Home Loan Bank System
Woodward at Maple Berkley Branch: 3055 W. 12 Mile Rd.

<p>2 YOU CAN ENJOY MORE PLEASANT AND SAFER DRIVING ALL WINTER LONG</p> <p>Give yourself the peace of mind of driving a new '55 Ford that's built to take you through the rough winter driving more safely, more pleasantly.</p>	<p>3 YOU CAN HAVE A V-8 NOW... AND IN THE LOW-PRICE FIELD There's the mighty 182-h.p. V-8 block V-8. And the mighty 182-h.p. Y-block Special V-8—with Fordomatic* in Fairlanses and Station Wagons.</p>	<p>4 YOU'LL ENJOY FORD'S NEW, SMOOTHER HALF-POISED RIDE Ford's famous Ball-Joint Front Suspension is now angled to smoothly out tire road flaws, such as paving joints, as well as big bumps.</p>	<p>5 YOUR PRESENT CAR WILL NEVER BE WORTH MORE IN TRADE It's a good sound business judgment to buy a new '55 Ford NOW. For your present car is going down in value every day. Make a better trade NOW!</p>
--	--	--	---

Test Drive the new **FORD V-8** Now!

HAROLD TURNER Inc.

Turn to Turner — Your Friendly Ford Dealer